

INSERT  
Sec. 6

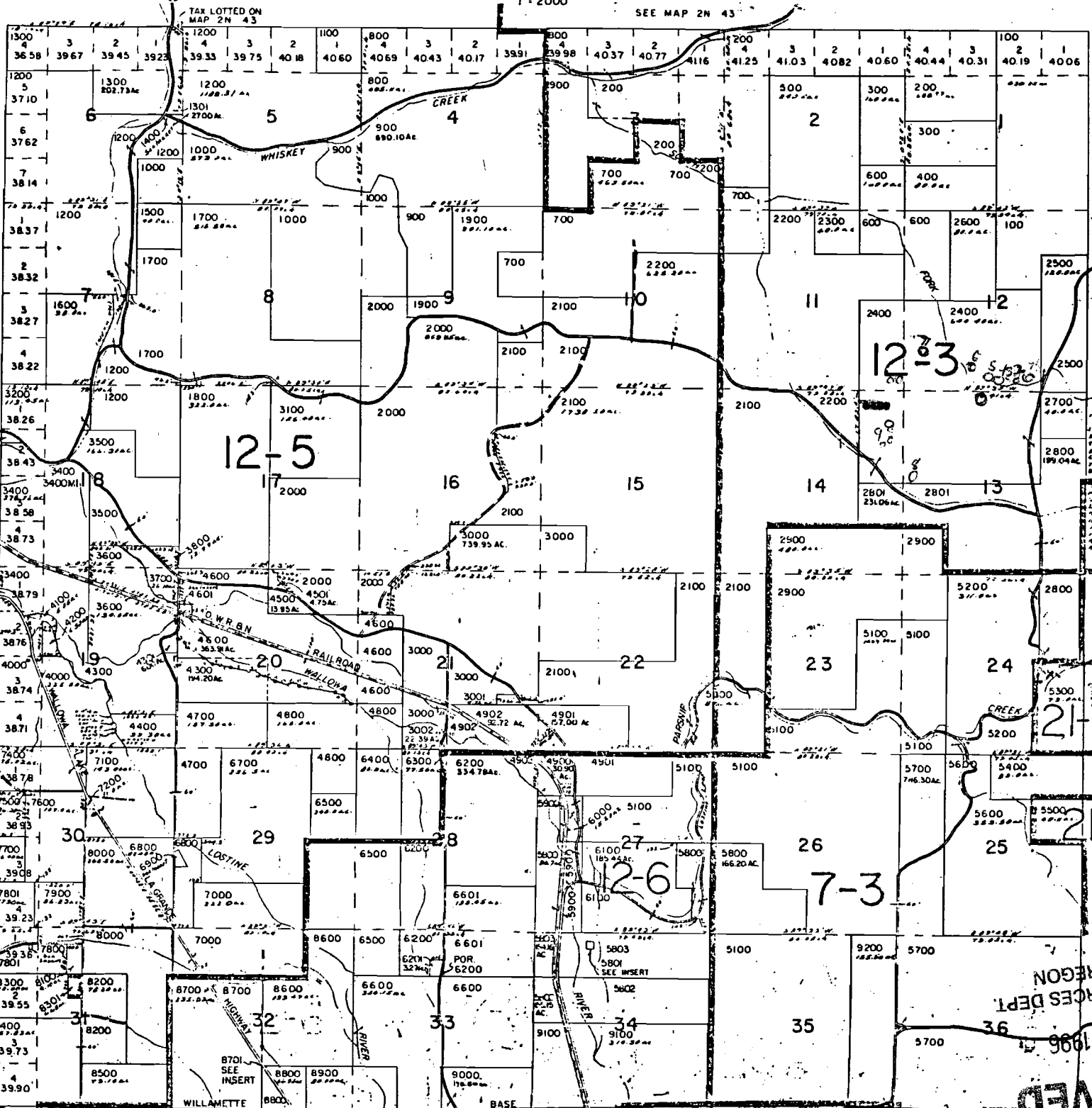
INSERT  
1" = 400'

INSERT  
Sec. 18

INSERT  
Sec. 29

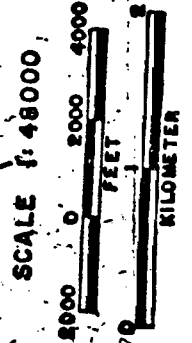
INSERT  
1" = 400'

INSERT  
Sec. 29



CANCELLED NO'S  
 4302  
 4602  
 8601  
 8702  
 5702  
 5701  
 7300

**WALLOWA  
 IN 43**



PARCEL 4600  
 1800 AC.  
 2800  
 189.04 AC.

SEE MAP IN 44

INSERT  
SEC 34  
1" = 400'

WATER RESOURCES DEPT.  
 SALEM, OREGON

AUG - 9 1996

**RECEIVED**

**RECEIVED**  
 FEB 25 1993

81478

$\frac{6}{25.2}$

HEL

$\frac{1}{24.3}$

HEL

$\frac{2}{38.8}$

T249

HEL

$\frac{1}{20.9}$

#7 WR

$\frac{7}{2.4}$  HEL

HEL

$\frac{3}{30.6}$

$\frac{6}{23.7}$

#6 WR

#5 WR #4 WR

#3 WR #2 WR

WATER RESOURCES DEPT  
MULTI-MEDIA CENTER  
AUG - 9 1996

HEL

11 12  
14 13

$\frac{2}{26.2}$

#8 WR

MT1002

12 7  
13 18

T348

HEL

NHEL

NHEL

$\frac{8}{14.3}$

#11 WR  
#10

CRP  
86-95  
 $\frac{3}{69.0}$

#9 WR

CRP  
86-95  
 $\frac{4}{76.4}$

NHEL  
CRP  
86-95  
 $\frac{5}{12.4}$

MT1002

$\frac{10}{1.9}$   
NHEL

T800