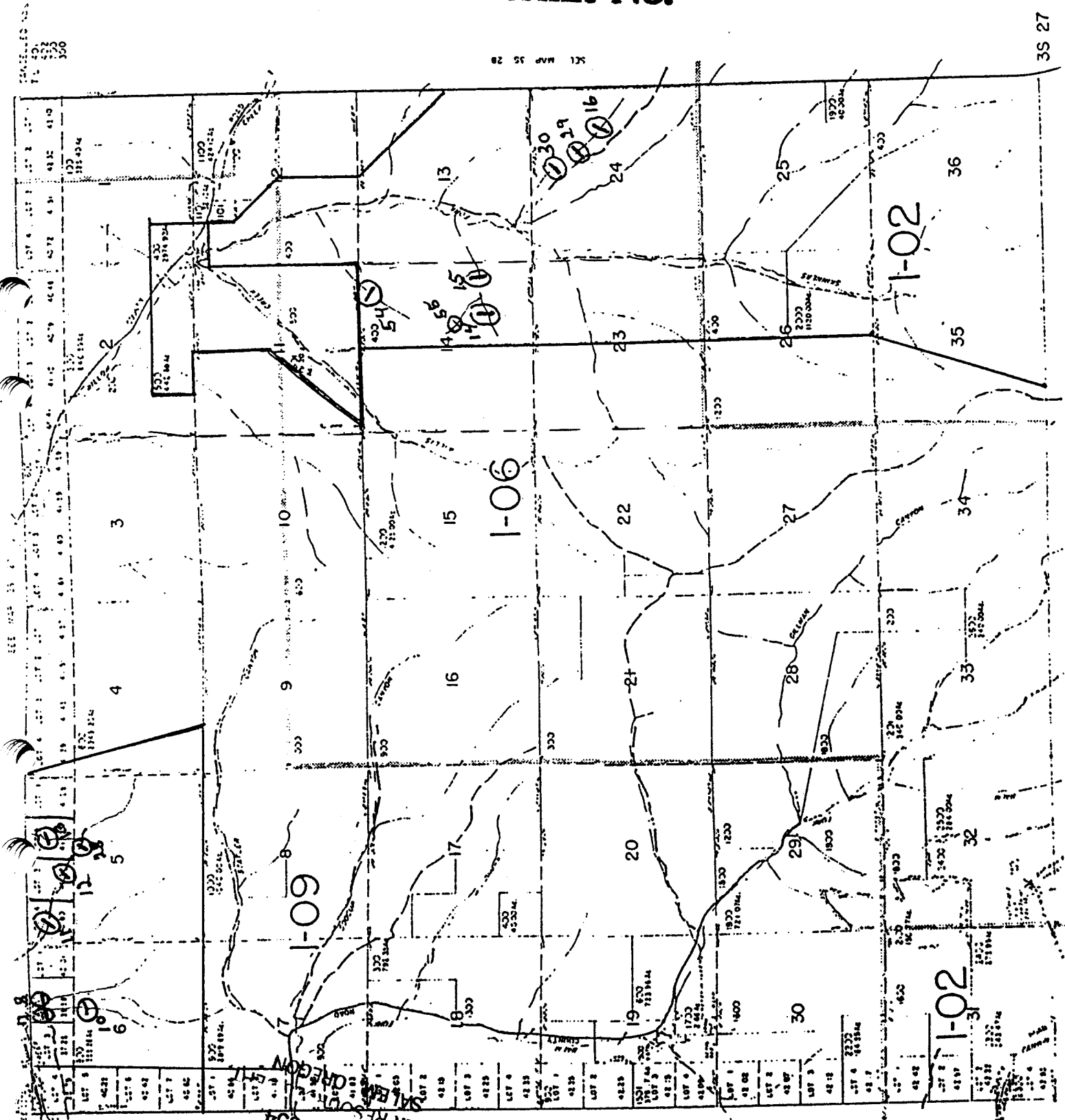


Application No. R-81578
Permit No.



Bonds #:
7, 8, 10, 11, 12, 13
14, 15, 16, 20, 29,
30, 5, 155

RECEIVED
DEC 30 1994
WATER RESOUR

3527E

SEC 19
PARCEL 1900

SEC 30
PARCEL 1900

SEE MAP 35 26

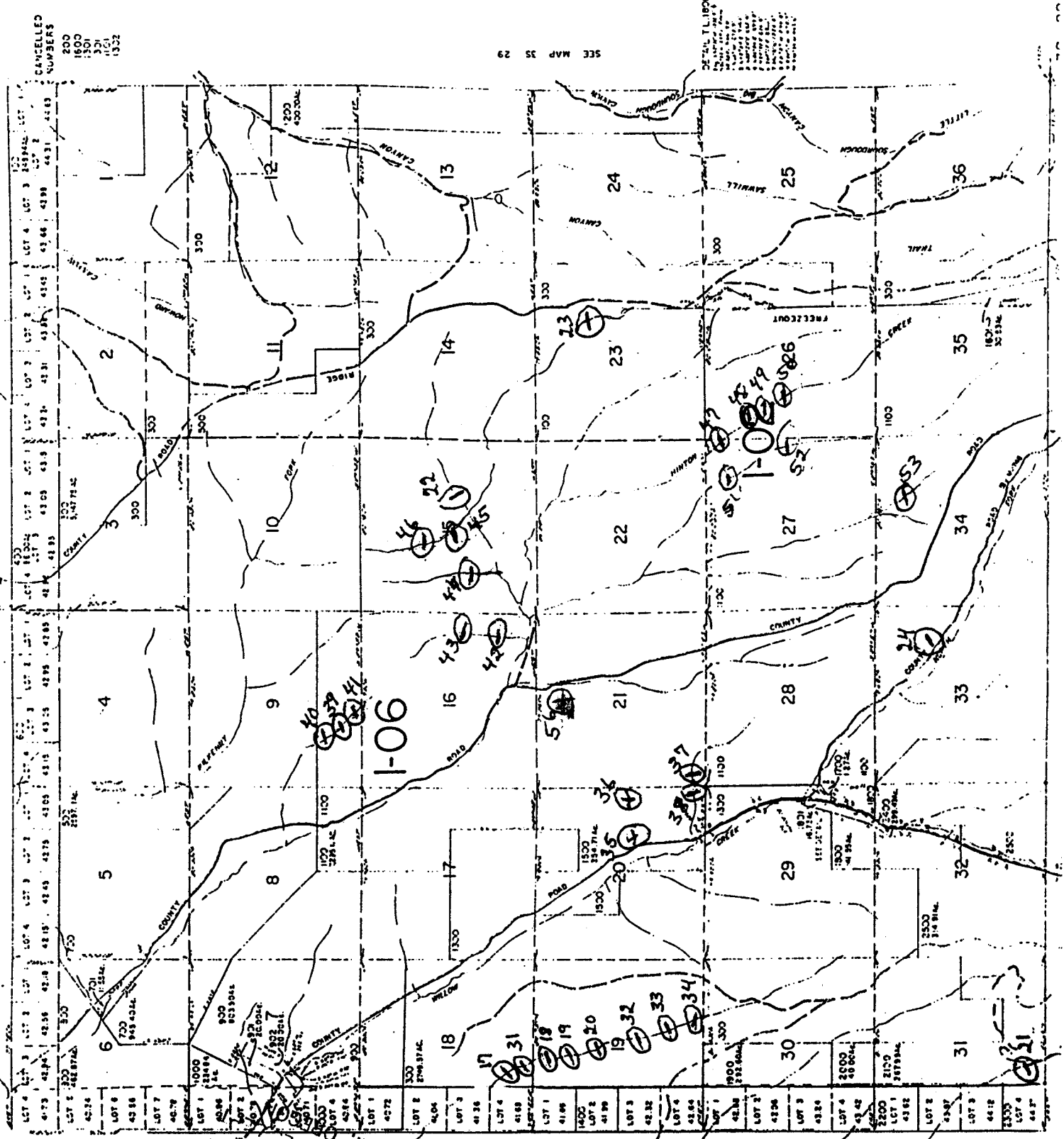
511 MAR 35 26

35 27

Ponds #:
 17, 18, 19, 20, 21,
 22, 23, 24, 31, 32,
 33, 34, 35, 36,
 37, 38, 39, 40, 41
 42, 43, 44, 45, 46
 47, 48, 49, 50, 51
 62, 63, 66

RECEIVED
 DEC 30 1994
 WATER RESOURCES
 SALEM

3528E



CANCELLED
 NUMBERS
 200
 1600
 1500
 1300
 1323

SEE MAP 35 29

DETAIL T. 1180
 T. 1180 N. 35 W. 29 E.
 SECTION 29
 T. 1180 N. 35 W. 29 E.
 SECTION 29
 T. 1180 N. 35 W. 29 E.
 SECTION 29

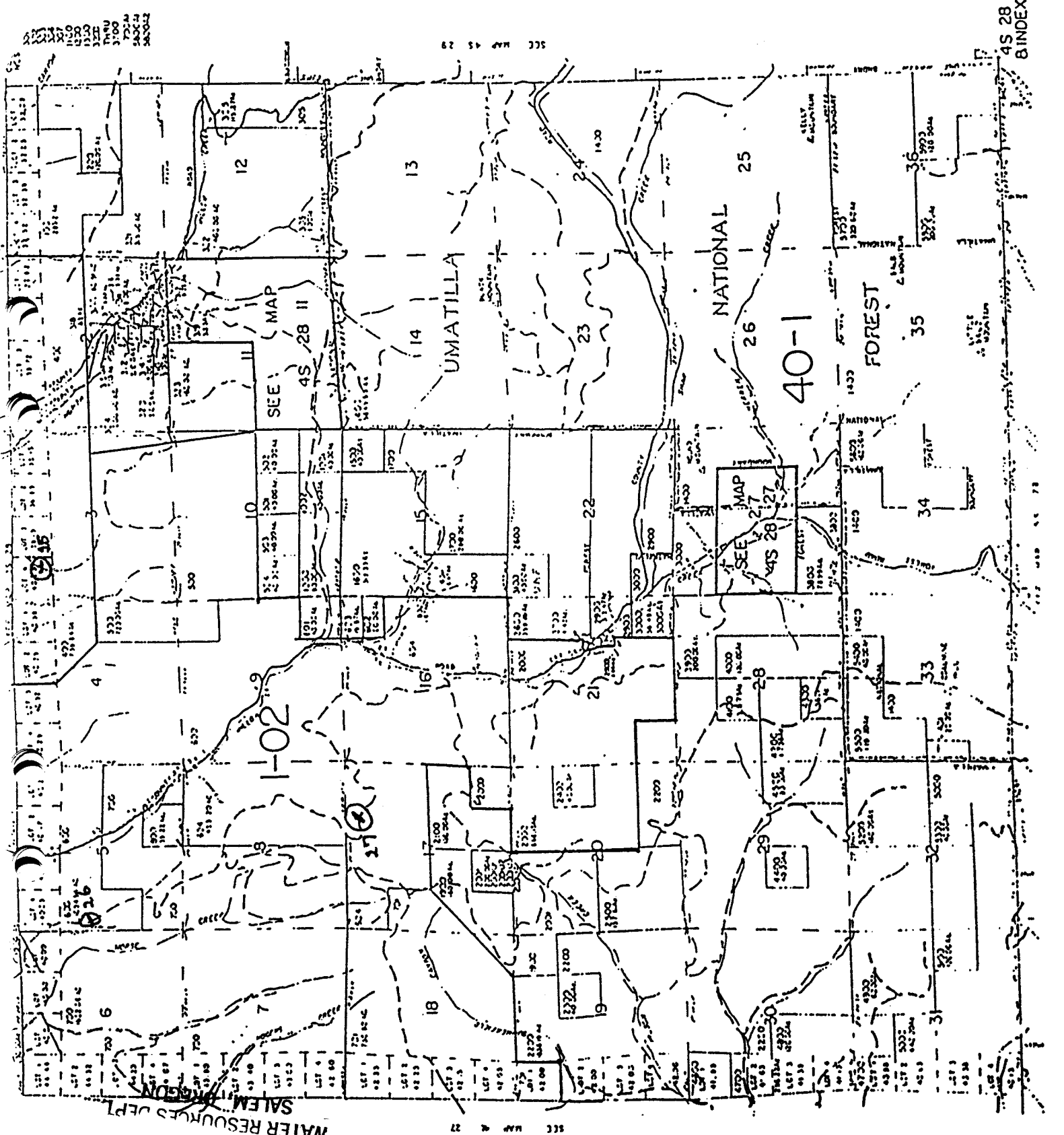
Order #: 25, 26, 27

RECEIVED

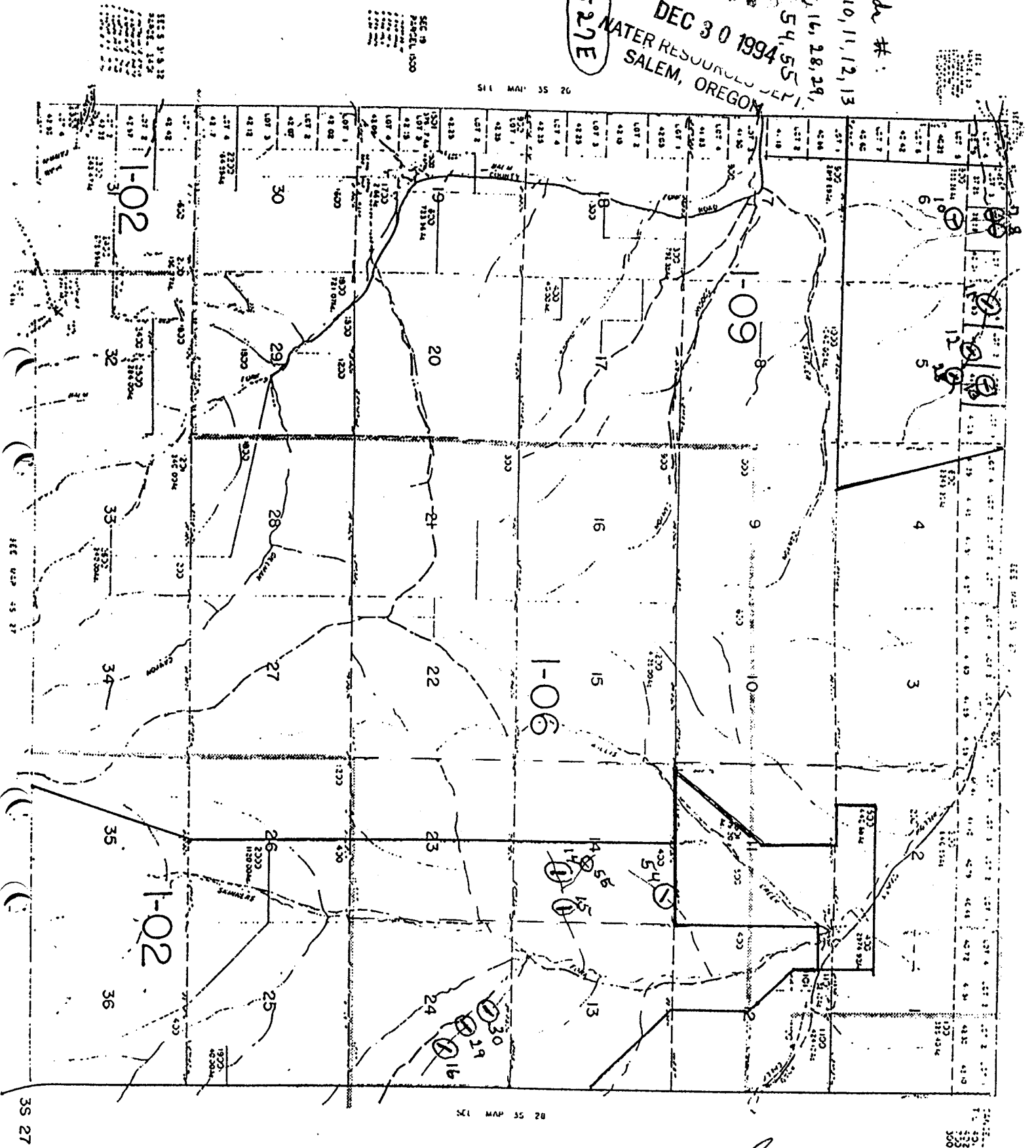
DEC 30 1994

WATER RESOURCES DEPT. SALEM, OREGON

4528 E



RECEIVED
 DEC 30 1994
 WATER RESOURCES DEPT.
 SALEM, OREGON
 35291E
 Books #: 7, 8, 10, 11, 12, 13, 14, 15, 16, 28, 29, 30, 54, 55



Application No. R-81578
 Permit No.