

RECEIVED

SEP 18 1996

WATER RESOURCES DEPT.
SALEM, OREGON

DEC 28 1994

DEPT

R-12

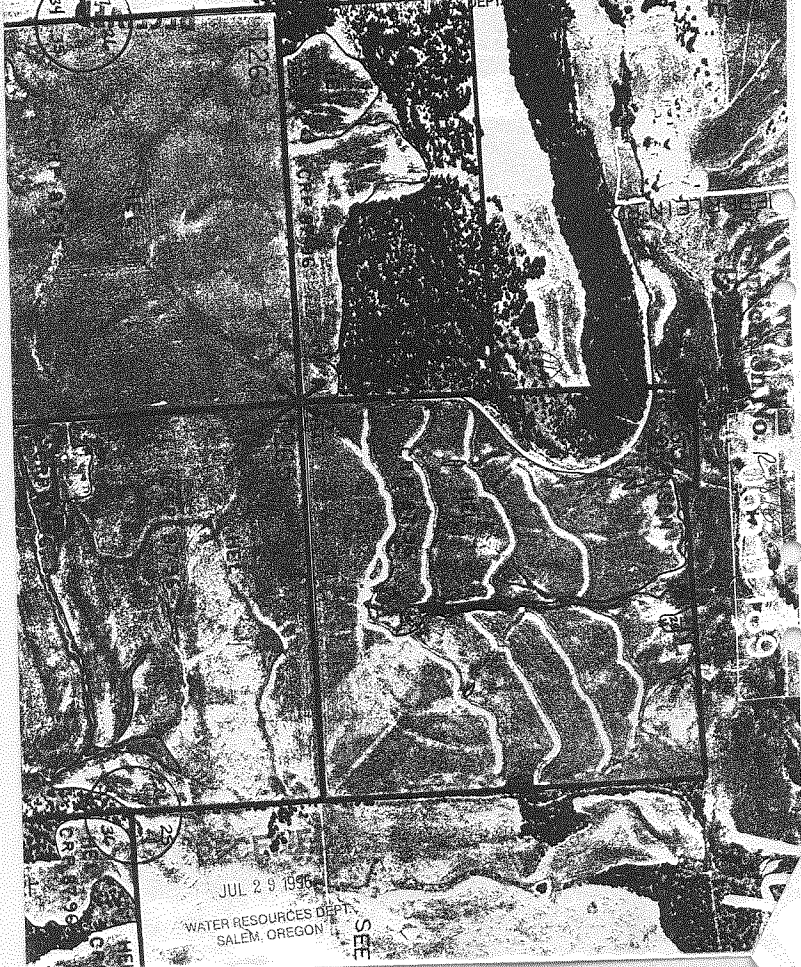
Map No. 2160-119

119

JUL 29 1996

WATER RESOURCES DEPT.
SALEM, OREGON

SEE



R SORENSEN

SEE H-13-L

CRP

15

T 209
H. LINDELL

WIDE REST

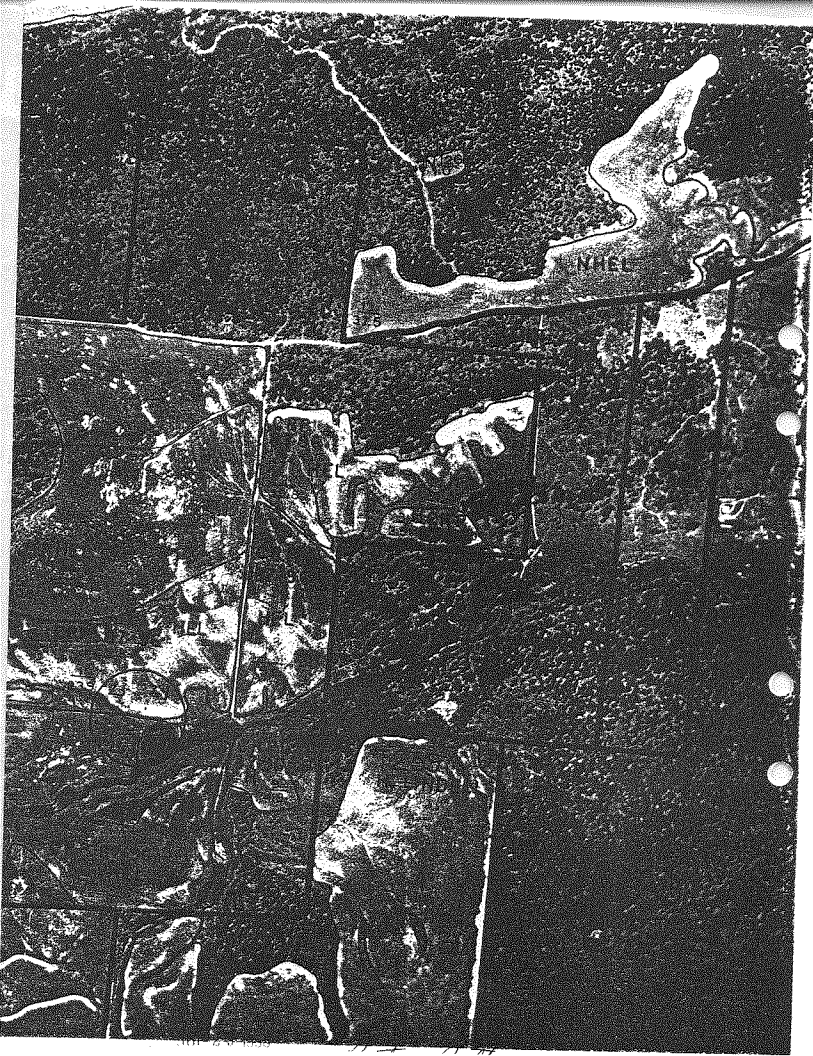
CRP 87-96

HELL

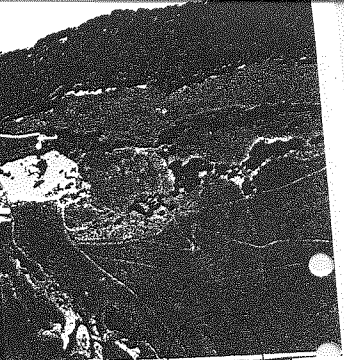
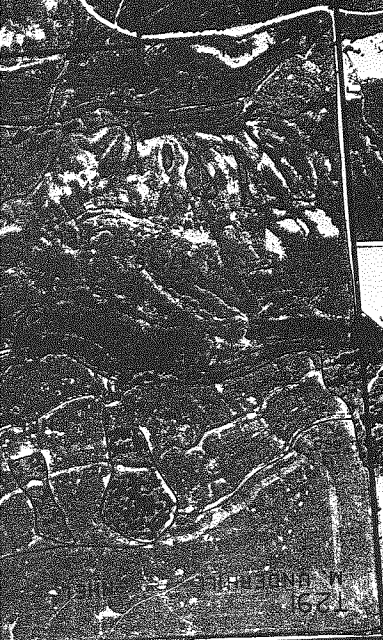
CRP 87-96

198

35



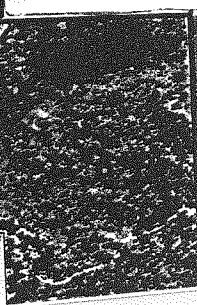
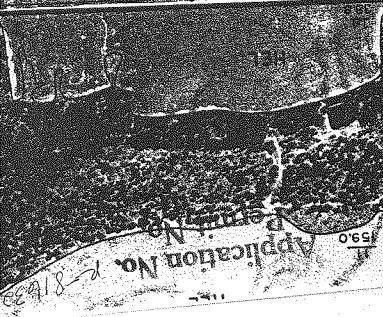
06
1983



RECEIVED
SEP 18 1996
WATER RESOURCES DEPT.
SALEM, OREGON

RECEIVED
JUL 29 1996
WATER RESOURCES DEPT.
SALEM, OREGON

SEE
I-25



RECEIVED
AUG 28 1994
WATER RESOURCES DEPT.
SALEM, OREGON

Application No. 81433
Permit No. 1590