

CERTIFICATE NO. 69221

Application No. P-80721  
Permit No.

SCALE 1:9600



N 798,247  
E 1,264,679  
16 15  
21 22

N 792,382  
E 1,264,519  
21 22  
26 27

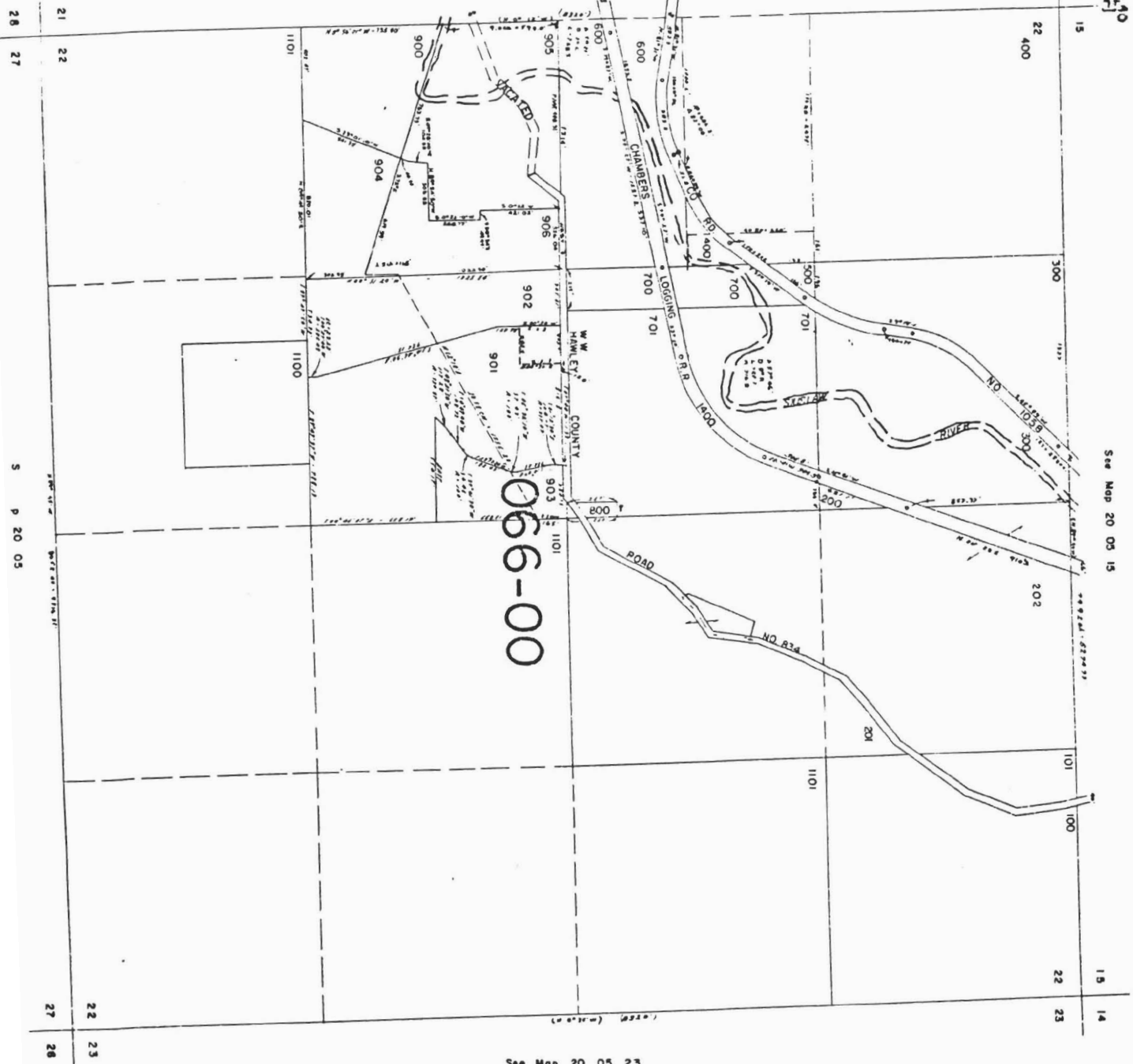
SECTION 22 20 S SW  
LANE COUNTY  
1"=400'

See Map 20 05 15

See Map 20 05 21

066-00

See Map 20 05 23



N 798,059  
E 1,269,111  
15 14  
22 23

N 792,780  
E 1,269,627  
22 23  
27 26

21 22  
26 27  
21 22  
26 27  
22 23  
27 26

25-05-22

21 22 400

RECEIVED

DEC 30 1994

WATER RESOURCES DEPT  
SALEM, OREGON

066-00

Application No. R-80721  
Permit No.

CERTIFICATE NO. 69221

APPROX  
1.2 AC RD FT.

Pond

600  
19.65 AC.

601  
12.13 AC.

066-00

066

See Map 20 05 21

VACATED

906  
4.84 AC.

902  
907  
7.34 AC.  
P.I.

901

900

W. W. HAWLEY

COU

12-PD242

