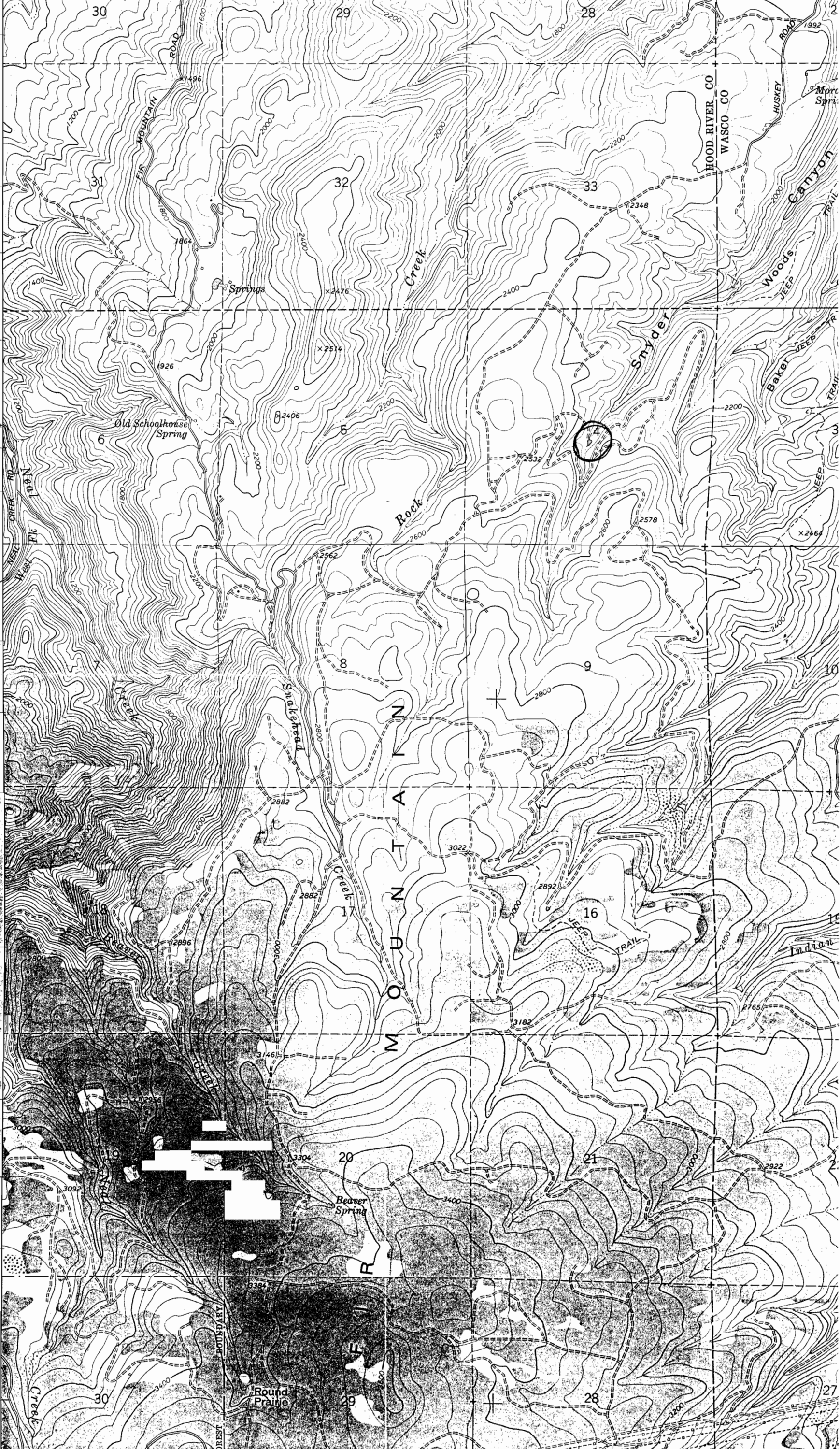


UNITED STATES  
DEPARTMENT OF THE INTERIOR  
GEOLOGICAL SURVEY

121° 30' 45" 37' 30" 618000m.E. HOOD RIVER 8 MI. 619 620 27' 30" 621 1775 III NW (WHITE SALMON)



"CERTIFICATE NO. 13269"

Application No. R71723  
Permit No.

OCT 1 1994  
WATER RESOURCES DIVISION  
SALEM, OREGON

MAILED  
OCT 1 1994  
ES DEPT  
DIVISION

RECEIVED

HOOD RIVER  
1:25,000  
1:62,500