

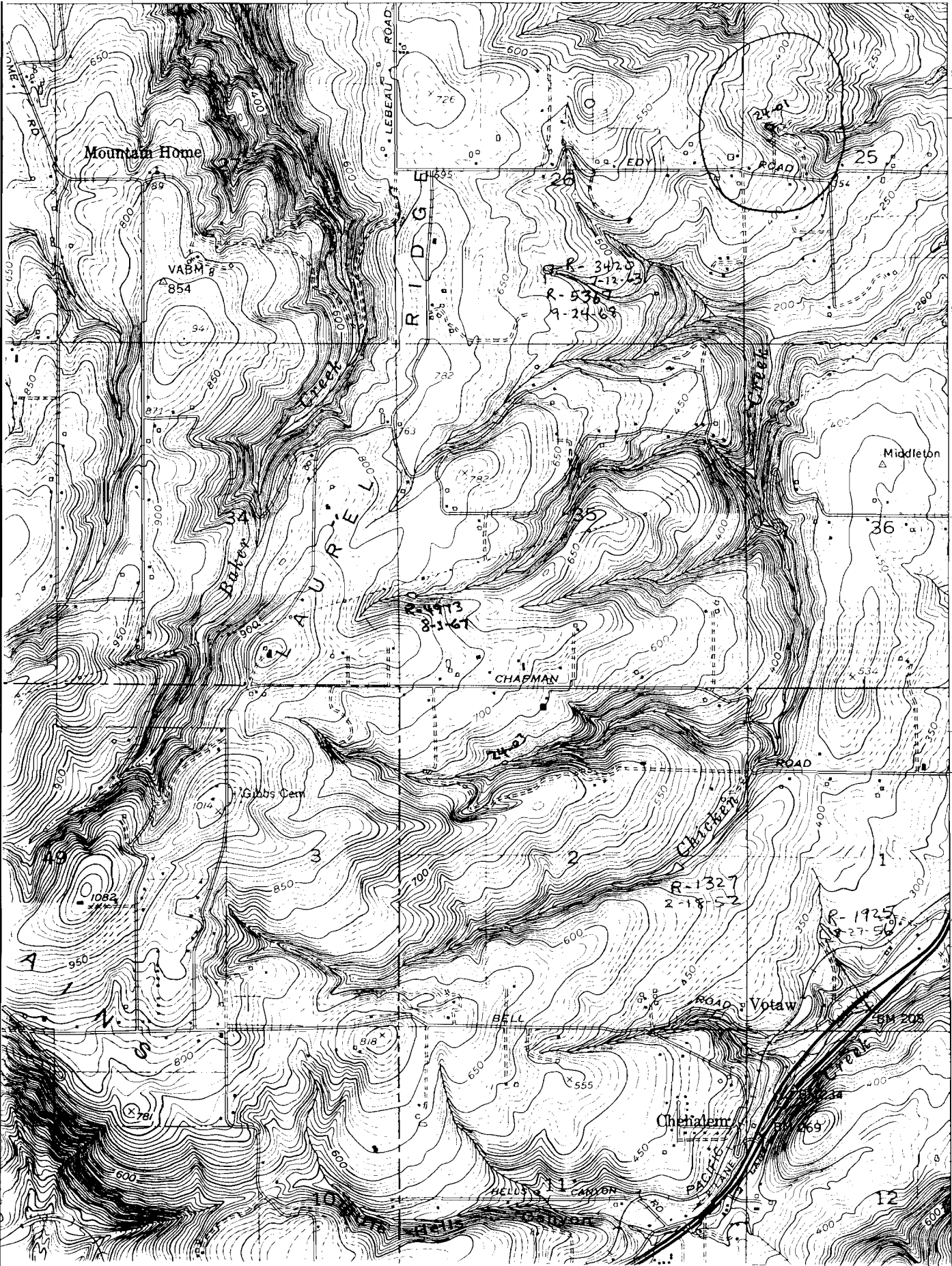
R75263

1961  
Photo revised  
1970

NEWBERG QUADRANGLE  
OREGON  
7.5 MINUTE SERIES (TOPOGRAPHIC)  
SW/4 BEAVERTON 15' QUADRANGLE

1474 IV NE  
(BEAVERTON)  
**20**

506 55' 1 380,000 FEET 508 509 122°52'30" 45°22'30"



R-5349  
5024 8-20-68  
630 000  
FEET

5023

5022

T. 2 S.  
T. 3 S.

5021

SIX CORNERS 2.5 MI.  
PORTLAND 18 MI.

20'

5019

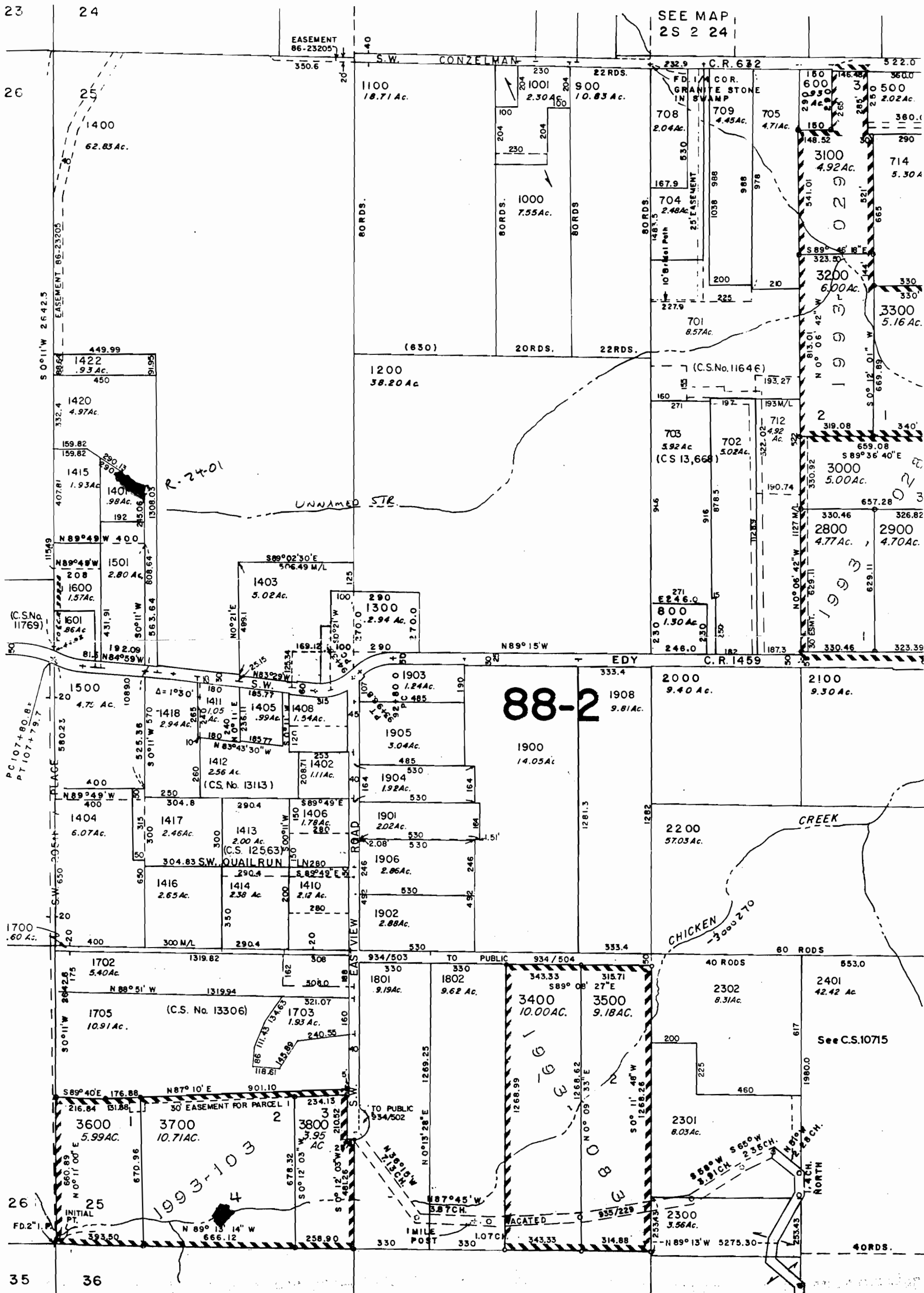
87768

5018

SECTION 25 T2S R2W W.M.

WASHINGTON COUNTY OREGON

SCALE 1"=400'



FOR ASSESSMENT PURPOSES ONLY  
DO NOT RELY ON FOR ANY OTHER USE

CERTIFICATE NO. 69448

RT5263