

SECTION 29 T2S R2W W.M.

WASHINGTON COUNTY OREGON

SCALE 1" = 400'

Application No. R-75765

Permit No.

69778

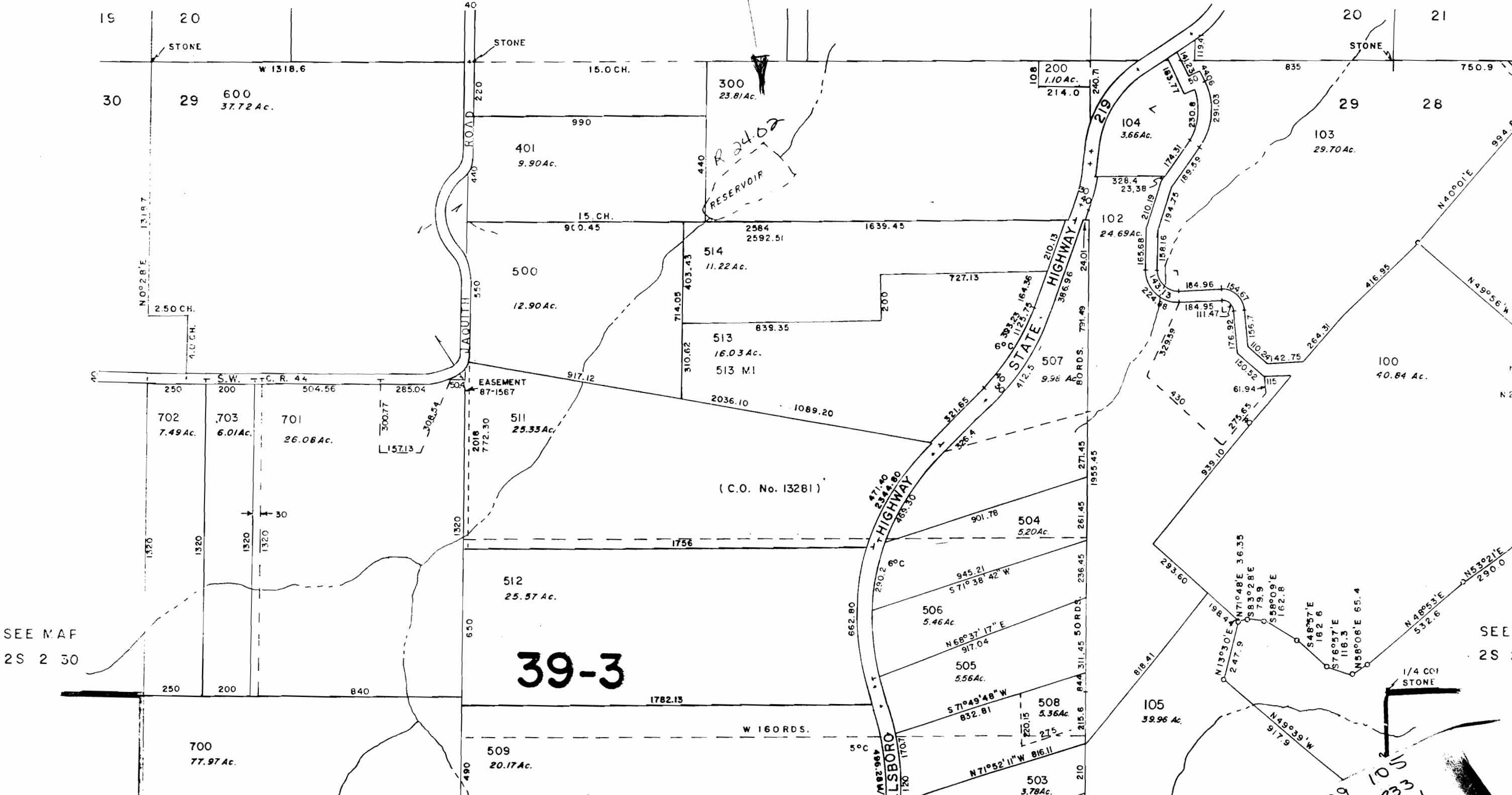
2S 2

CERTIFICATE

1948 RESEVOIR

CANCELLED TAX LOTS
900, 901, 400, 101, 106,

SEE MAP
2S 2 20



SEE MAP
2S 2 30

SEE
2S

39-3

29 105
2933