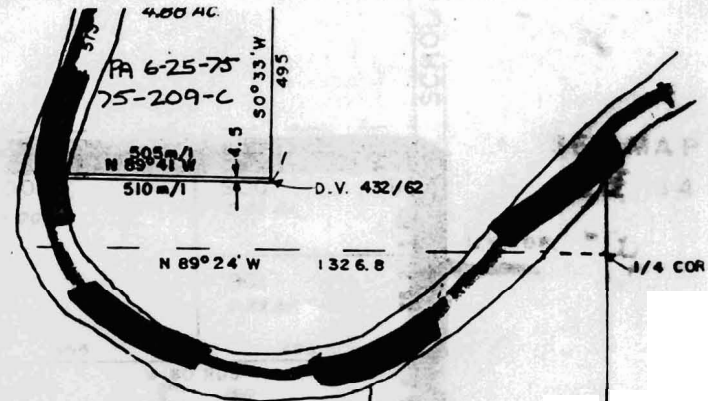


900
99.05 Ac.
PA 4-12-90

LOT 2
29.00 Ac.



265.4 265.4 265.4 65.4
1000 1100 1200

900
PA 3-8-90
PA 4-12-90
PA 8-8-91
PA 5-7-92

1100 1200 1300
16.01 Ac. 16.01 Ac. 14.01 Ac.

RECEIVED
DEC 23 1994
SALEM, OREGON

2652.1
2651.5 N 0° 41' E
2650.8 N 0° 39' E
2650.1 N 0° 37' E
2649.4 N 0° 35' E
2648.7 S 0° 33' W

NEW FOREST RESERVE

10x16' POND
35 years OLD
900 feet

226.9
1301
2.00 Ac.
384
384
PA 12-11-79
266.9

CS3150

PA 3-8-90
PA 8-8-91

Application No. R-75895
Permit No. 23-2

69886

CERTIFICATE NO. 69886
WASHINGTON COUNTY
DEPARTMENT OF
ASSESSMENT & TAXATION

OCT 18 1994

FOR ASSESSMENT
PURPOSES ONLY.
DO NOT RELY ON
FOR ANY OTHER USE

SEE MAP
2S 2 23

FOR ASSESSMENT PURPOSES
ONLY - DO NOT RELY ON

2S 2 14

E FLOOD ATLAS

2S 2 14 SEC