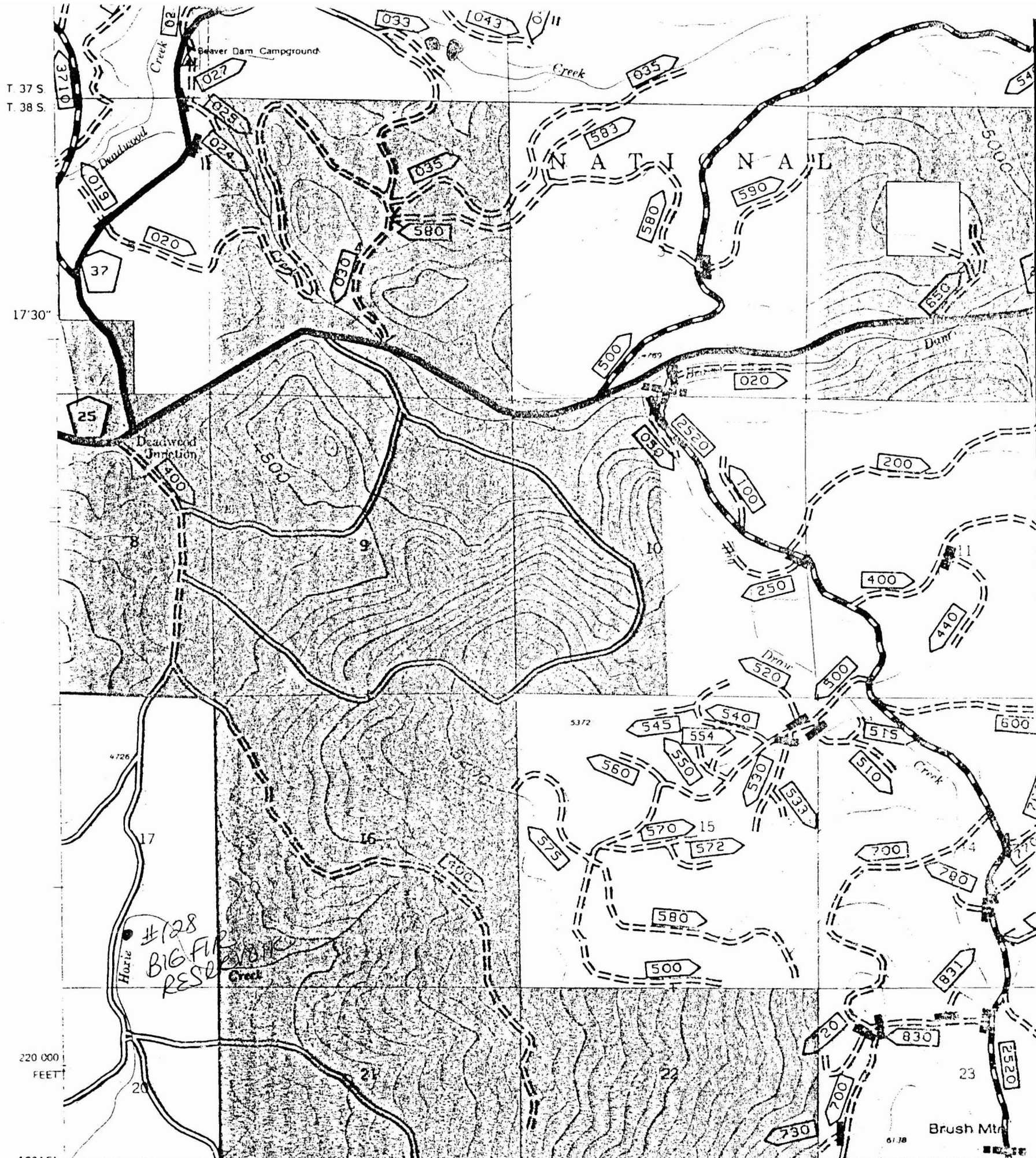


Application No. R 79278
 Permit No.



T 37 S
 T 38 S
 17°30'
 42°15'
 122°22'30"

Base map prepared by the U.S. Geological Survey
 Control by USGS and USC&GS
 Topography by photogrammetric methods from aerial photographs taken 1953. Field check 1955
 Polyconic projection. 1927 North American datum
 10,000-foot grid based on Oregon coordinate system, south zone
 1000-meter Universal Transverse Mercator grid ticks, zone 10, shown in blue.
 INTERMEDIATE EDITION
 Modification to USGS base map prepared by the Geometrics Service Center from 1980 aerial photography and 1982 correction guides furnished by the Pacific Northwest Region.
 Landnet revised according to additional Forest Service evidence.

UTM GRID AND 1982 MAGNETIC NORTH DECLINATION AT CENTER OF SHEET
 71465

R4E 20
 [scale = 1:24000]

- LEGEND
- National Forest Boundary
 - ▨ Alienated Land Within the National Forest Boundary as of 1981
 - ▨ Special Area Boundary
 - TOWNSHIP AND SECTION LINE CLASSIFICATION
 - Surveyed, Location Reliable
 - - - Surveyed, Location Approximate
 - ⋯ Unsurveyed, Protraction by BLM

[Mt. McLoughlin SE, Oreg. Quadrangle]