

Rommel Rock Camp
Rommel Rock Bass Pond

T37S
T38S

R1E
R2E

Application No. R-79290
Permit No. 71471

CERTIFICATE NO.

Improved Road.....

Unimproved Road.....

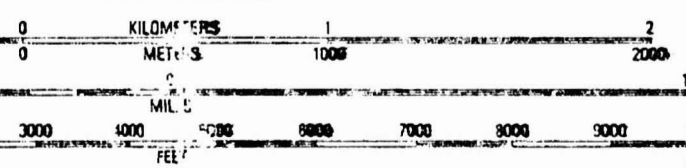
Trail.....

○ Interstate Route ○ U.S. Route ○ State Route

RIO CANYON, OREG.

PROVISIONAL EDITION 1988

SCALE 1:24 000



QUADRANGLE LOCATION

CONTOUR INTERVAL 40 FEET

NO. ELEVATIONS SHOW TO THE NEAREST 0.1 FOOT
 MEASUREMENTS SHOW TO THE NEAREST FOOT
 To convert meters to feet multiply by 3.2808
 To convert feet to meters multiply by 0.3048

1	2	3	1 Eagle Point
			2 Brownsboro
			3 Lakecreek
4		5	4 Madford East
			5 Grizzly Peak
			6 Talent
6	7	8	7 Ashland
			8 Emigrant Lake

ADJOINING 7.5' QUADRANGLE NAMES

CONFORMS WITH NATIONAL MAP ACCURACY STANDARDS