

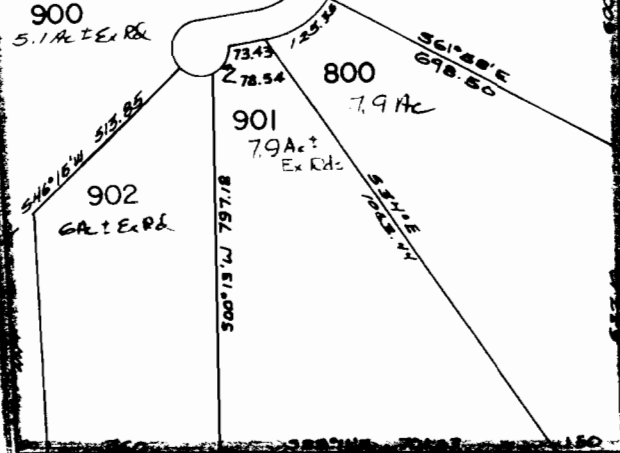
SEE SEC 2 3 22

29.2

COUNTY

71950

R-80390



2200
77.56 Ac

2100
80.6 Ac

2323
2000
63.8 Ac
TAX LOT #

CS-2462

1600
29.2 Ac

CSP-3141

N89°21'E
680

N89°32'E
680

1700
19 Ac

TAX LOT #

CSP-4066

1900
12.4 Ac

1800
12.4 Ac

N85°15'W
FINNIGAN
1338.48

HILL

CRDLY
RD.

680

680

Reservements

- ①
- ②
- ③

SEE SEC 2 3 26

WASHINGTON

RECEIVED MAR 1 1 1991

2 3 23