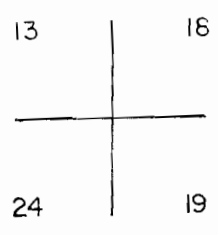


N 24 T1N R3W W.M.

INGTON COUNTY OREGON

SCALE 1" = 400'

SEE MAP IN 3 13

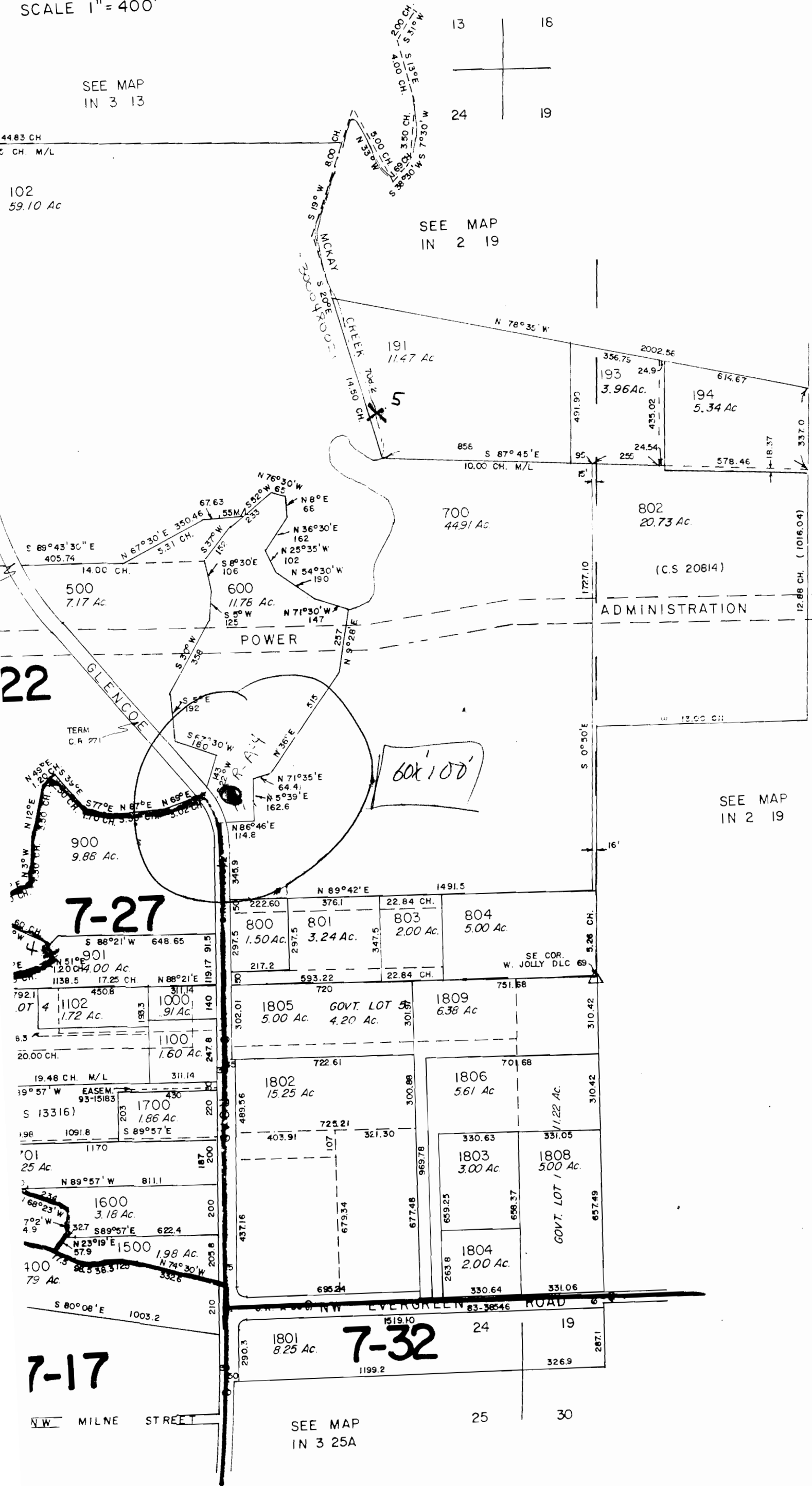


4483 CH
CH. M/L

102
59.10 Ac

SEE MAP IN 2 19

CANCELLED TAX LOTS
1103, 1800, 1807, 1810, 805,
190, 192,



ADMINISTRATION

SEE MAP IN 2 19

CERTIFICATE NO.

71963

Application No. 1-2-2009

FOR ASSESSMENT PURPOSES
ONLY
DO NOT RELY ON FOR ANY
OTHER USE.

NW MILNE STREET

SEE MAP IN 3 25A

25 30