

Application No. R-80892 - 80902  
Permit No.  
"CERTIFICATE NO. 7215-7216"

RFC  
DEC 8 1984  
SALEM, OREGON

ROAD LEGEND  
Improved Road  
Unimproved Road  
Trail  
Intrastate Route  
U.S. Route  
State Route

QUADRANGLE LOCATION  
1 2 3  
4 5  
6 7 8

SCALE 1:24 000  
KILOMETERS  
METERS  
MILES  
FEET  
CONTOUR INTERVAL 40 FEET  
To convert meters to feet multiply by 3.2808  
To convert feet to meters multiply by .3048

PROVISIONAL MAP  
Produced from original  
manuscript drawings. Infor-  
mation shown as of date of  
field check.

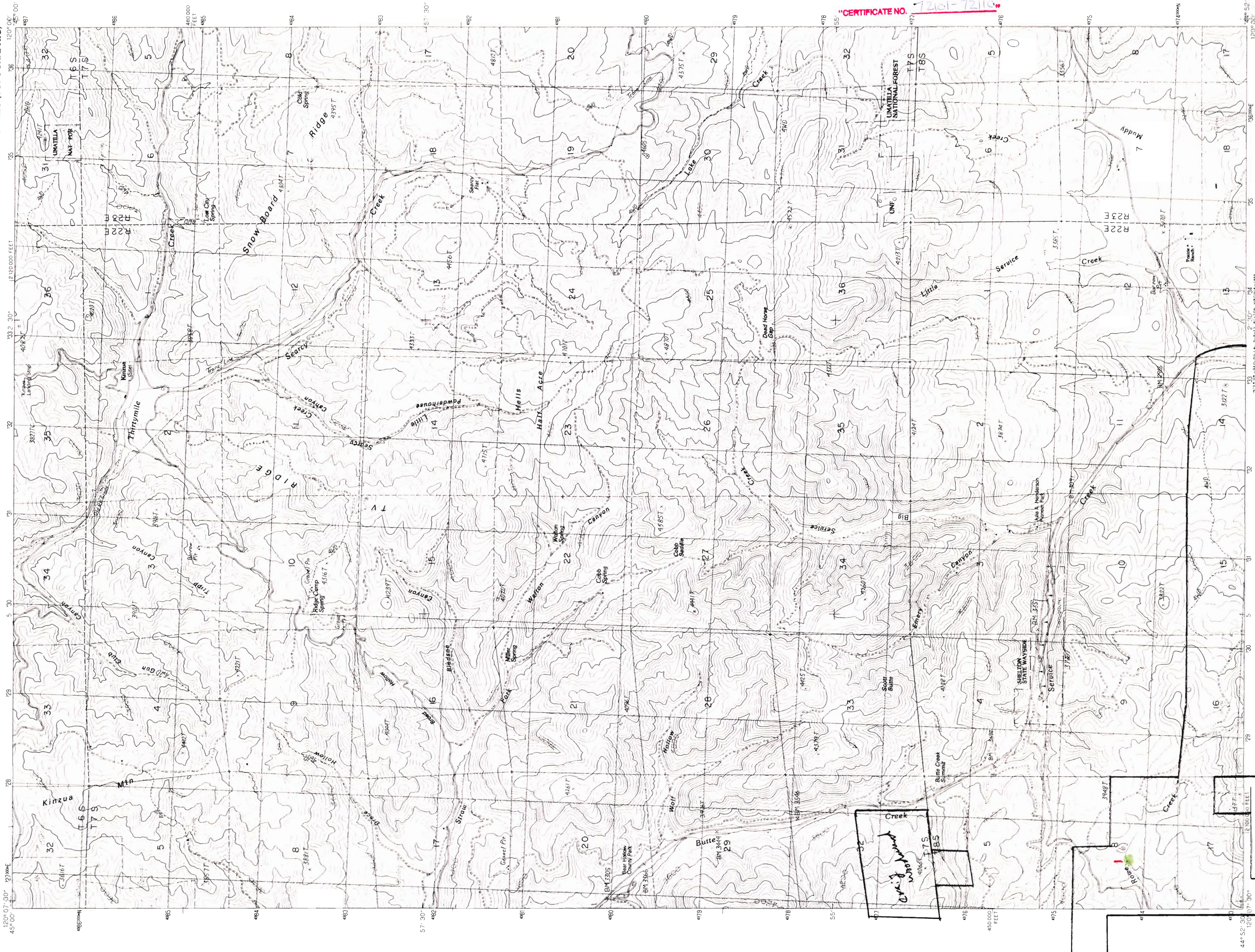
PRODUCED BY THE UNITED STATES GEOLOGICAL SURVEY  
COMPILED FROM AERIAL PHOTOGRAPHS TAKEN IN 1958 AND NOV 1984  
FIELD CHECKED 1986 MAP EDITED 1990  
GRID 1000-METER UNIVERSAL TRANSVERSE MERCATOR ZONE 10  
10 000-FOOT STATE GRID TICS OREGON SOUTH ZONE  
U.P.M. GRID DECLINATION NORTH DECLINATION 1 42 EAST  
VERTICAL DATUM 1929 NATIONAL GEODETIC VERTICAL DATUM OF 1929  
HORIZONTAL DATUM 1927 NORTH AMERICAN DATUM  
To place on the predicted North American Datum of 1983,  
move the projection lines as shown by dashed corner ticks  
(20) meters east  
There may be alternate labels within the boundaries of any  
Federal or State reservations shown on this map

CADLE BUTTE, OREGON  
PROVISIONAL EDITION 1990  
44120-C5-TF-024

148

Ochoco

Apps. R-80892 & R-80902



Application No. R-80892 - R-80902  
Permit No.

CERTIFICATE NO. 72161-72110

ROAD LEGEND  
Improved Road  
Unimproved Road  
Trail  
Interstate Route  
U.S. Route  
State Route

QUADRANGLE LOCATION  
1 2 3  
4 5 6  
7 8

SCALE 1:24 000  
KILOMETERS  
MILES  
CONTOUR INTERVAL 40 FEET  
To convert meters to feet multiply by 3.2808  
To convert feet to meters multiply by 0.3048

PROVISIONAL MAP  
Produced from original  
manuscript drawings. Information shown as of date of field check.

PRODUCED BY THE UNITED STATES GEOLOGICAL SURVEY  
COMPILED FROM AERIAL PHOTOGRAPHS TAKEN IN 1963  
LIMITED REVISION FROM AERIAL PHOTOGRAPHS TAKEN IN 1966  
LIMITED REVISION FROM AERIAL PHOTOGRAPHS TAKEN IN 1967  
LIMITED REVISION FROM AERIAL PHOTOGRAPHS TAKEN IN 1968  
LIMITED REVISION FROM AERIAL PHOTOGRAPHS TAKEN IN 1969  
LIMITED REVISION FROM AERIAL PHOTOGRAPHS TAKEN IN 1970  
LIMITED REVISION FROM AERIAL PHOTOGRAPHS TAKEN IN 1971  
LIMITED REVISION FROM AERIAL PHOTOGRAPHS TAKEN IN 1972  
LIMITED REVISION FROM AERIAL PHOTOGRAPHS TAKEN IN 1973  
LIMITED REVISION FROM AERIAL PHOTOGRAPHS TAKEN IN 1974  
LIMITED REVISION FROM AERIAL PHOTOGRAPHS TAKEN IN 1975  
LIMITED REVISION FROM AERIAL PHOTOGRAPHS TAKEN IN 1976  
LIMITED REVISION FROM AERIAL PHOTOGRAPHS TAKEN IN 1977  
LIMITED REVISION FROM AERIAL PHOTOGRAPHS TAKEN IN 1978  
LIMITED REVISION FROM AERIAL PHOTOGRAPHS TAKEN IN 1979  
LIMITED REVISION FROM AERIAL PHOTOGRAPHS TAKEN IN 1980

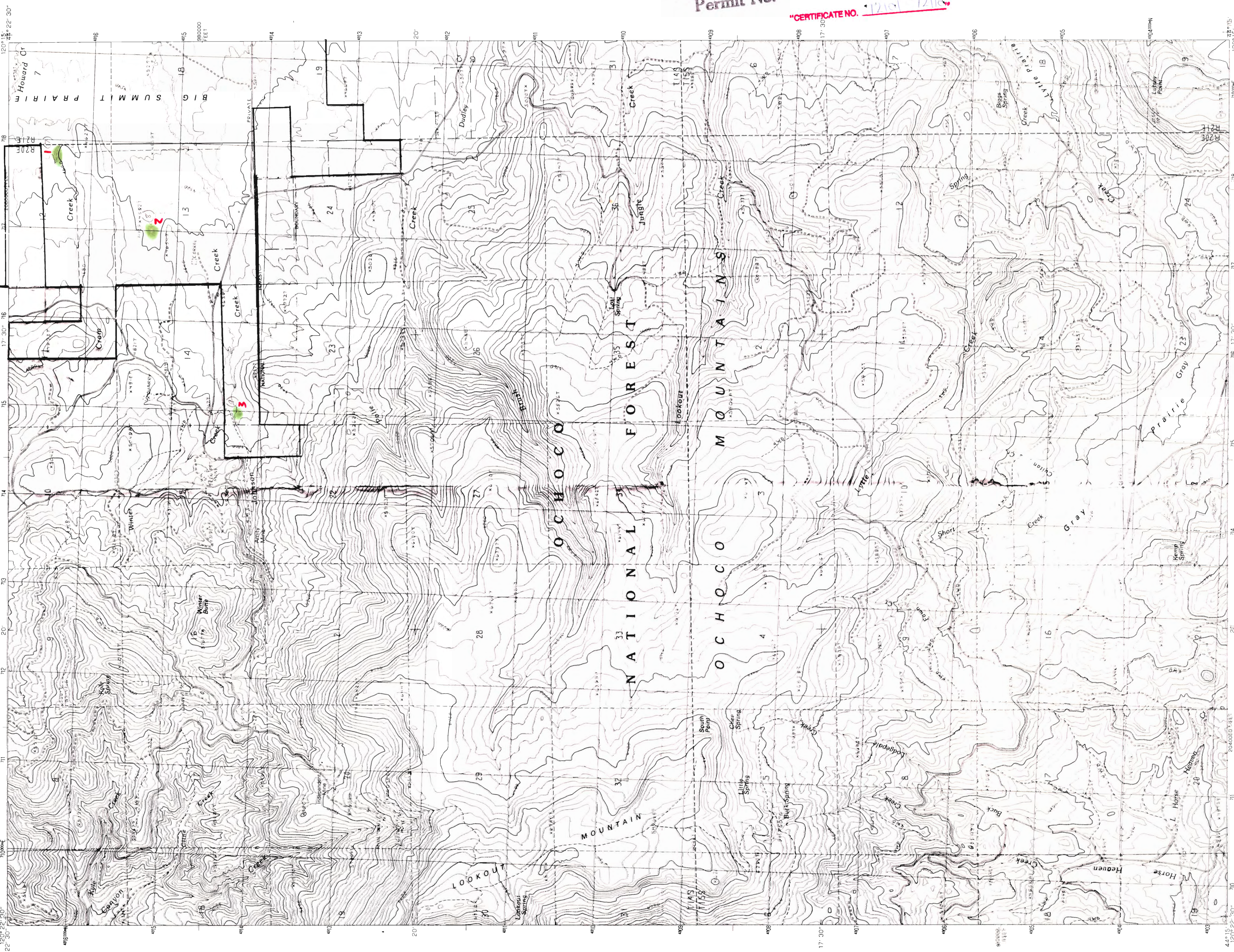
THIS MAP COMPLETES WITH NATIONAL MAP A. CUBARY, STANDARDS  
FOR SALE BY U. S. GEOLOGICAL SURVEY, DENVER, COLORADO 80225, OR RESTON, VIRGINIA 22092

NO DISTINCTION MADE BETWEEN HOUSES, BARN, AND OTHER BUILDINGS  
AND VERIFIED OR SUPPLEMENTED IN 1986.  
Public Land Survey System. Published in 1966

PROVISIONAL EDITION 1987  
KINZUA, OREG.  
44120-HI-TF-024

148

Apps. R-80892 & R-80902



Application No. R-80892 + R-80902  
Permit No.   
"CERTIFICATE NO. 12101 12110"

ROAD LEGEND  
Improved Road  
Unimproved Road  
Trail  
Interstate Route  
U.S. Route  
State Route

QUADRANGLE LOCATION

1	2	3	4	5	6	7	8
1	2	3	4	5	6	7	8

ADJOINING 7.5 QUADRANGLE NAMES

SCALE 1:24 000  
METERS  
MILES  
CONTOUR INTERVAL 40 FEET  
SUPPLEMENTARY CONTOUR INTERVAL 20 FEET  
To convert meters to feet multiply by 3.2808  
To convert feet to meters multiply by .3048

PROVISIONAL MAP  
Produced from original  
manuscript drawings. Information  
shown as of date of  
field check.

PRODUCED BY THE UNITED STATES GEOLOGICAL SURVEY  
FROM AERIAL PHOTOGRAPHS TAKEN IN 1984  
AND 1986  
COMPILED FROM AERIAL PHOTOGRAPHS TAKEN IN 1984  
AND 1986  
FIELD CHECKED IN 1986  
MAP EDITED IN 1986  
GEOLOGICAL SURVEY  
10 000-METER UNIVERSAL TRANSVERSE MERCATOR ZONE 10  
10 000-FOOT STATE GRID TICS  
OREGON SOUTH ZONE  
1983 GRID DECLINATION 18 000 EAST  
1983 MAGNETIC DECLINATION 18 000 EAST  
VERTICAL DATUM 1927 NORTH AMERICAN DATUM  
To place on the predicted North American Datum of 1983,  
lower the projection lines as shown by dashed corner ticks  
There may be private inholdings within the boundaries of any  
Federal or State reservations shown on this map.

FOR SALE BY U.S. GEOLOGICAL SURVEY, DENVER, COLORADO 80225, OR RESTON, VIRGINIA 22092  
THIS MAP COMPLETES WITH NATIONAL MAP ACCURACY STANDARDS  
LOOKOUT MOUNTAIN, OREGON  
PROVISIONAL EDITION 1990  
44120-C3 TF-024

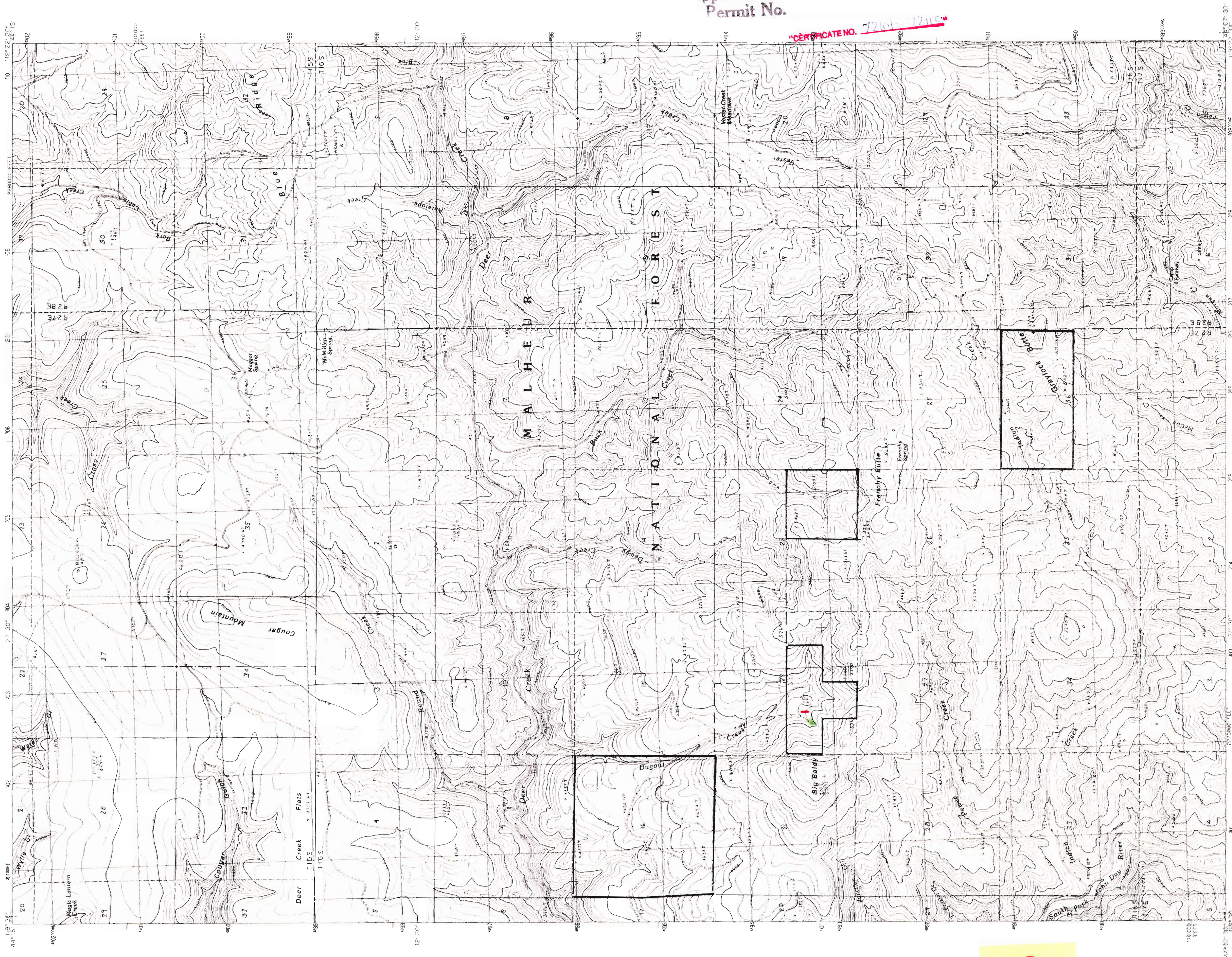
148

Apps. R-80892 & R-80902

148

UNITED STATES  
DEPARTMENT OF THE INTERIOR  
GEOLOGICAL SURVEY

GRAYLOCK BUTTE QUADRANGLE  
OREGON-GRANT CO.  
7.5 MINUTE SERIES (TOPOGRAPHIC)



Application No. R-80892 - R-80902  
Permit No.

CERIFICATE NO. 12161-12162

PRODUCED BY THE UNITED STATES GEOLOGICAL SURVEY  
CONTROL BY AERIAL PHOTOGRAPHS TAKEN 1984  
CONTROL BY AERIAL PHOTOGRAPHS TAKEN 1984  
PROJECTION: UTM  
GRID: 1000-METER UNIVERSAL TRANSVERSE MERCATOR, ZONE 11  
UTM GRID DECLINATION: OREGON, 17 30 WEST  
HORIZONTAL DATUM: NATIONAL GEODESIC 1925 NORTH AMERICAN DATUM  
To place on the predicted North American Datum of 1983,  
move the projection lines as shown by dashed corner ticks  
(19 meters north and 86 meters east)  
There may be private inholdings within the boundaries of any  
Federal or State reservations shown on this map.

SCALE 1:24 000  
Kilometers 0 1 2  
Miles 0 1 2

CONTOUR INTERVAL 40 FEET  
To convert meters to feet multiply by 3.2808  
To convert feet to meters multiply by .3048

ROAD LEGEND  
Improved Road  
Unimproved Road  
Trail  
Interstate Route  
U S Route  
State Route

QUADRANGLE LOCATION  
OREGON

1	2	3
4	5	6
7	8	9

ADJOINING 7.5 QUADRANGLE NAMES:  
1 Aldrich Gulch  
2 Big Weasel Springs  
3 Supple Butte  
4 Frenchy Butte  
5 Frenchy Springs  
6 Frenchy Butte  
7 I Zee  
8 Lewis Creek

GRAYLOCK BUTTE, OREGON  
PROVISIONAL EDITION 1990  
44119-B4-TF-024

FOR SALE BY U.S. GEOLOGICAL SURVEY, NATIONAL MAP ACCURACY STANDARDS  
D-NVER, COLORADO 80225 OR RESTON, VIRGINIA 22092

PROVISIONAL MAP  
Produced from original  
manuscript drawings. Infor-  
mation shown as of date of  
photography.

I Zee

Apps. R-80892 & R-80902

FIVE  
1094  
EPT.

148

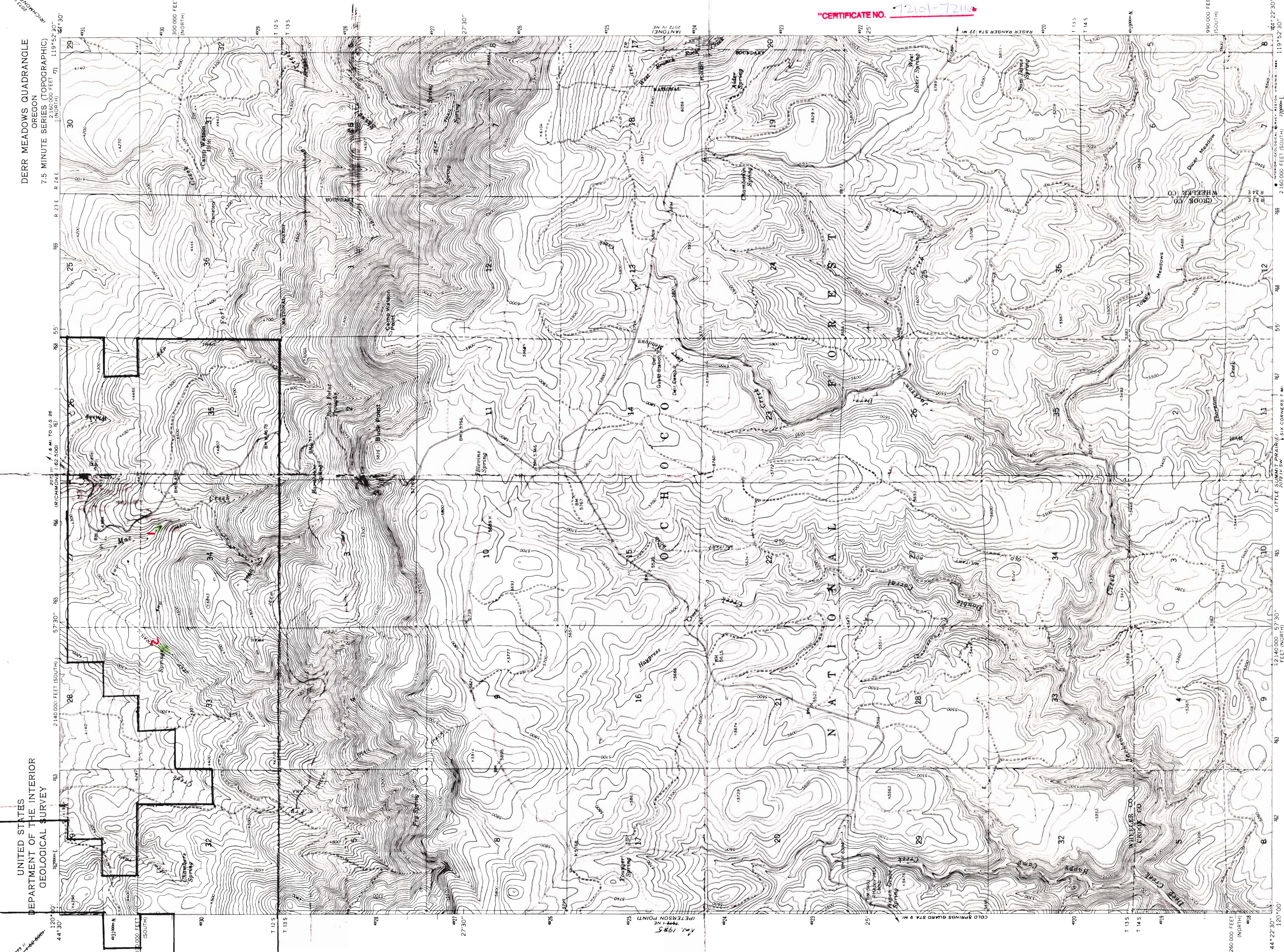
UNITED STATES  
DEPARTMENT OF THE INTERIOR  
GEOLOGICAL SURVEY

DERR MEADOWS QUADRANGLE  
OREGON  
7.5 MINUTE SERIES (TOPOGRAPHIC)

Application R-80892 & R-80902  
Permit No.

"CERTIFICATE NO. 72101-72110"

DEC 3 1984  
WATER RESOURCES  
SALEM, OREGON



Mapped, edited, and published by the Geological Survey  
Control by USGS and NOS/NOAA  
Topography by photogrammetric methods from aerial  
photographs taken 1959. Field checked 1966  
Polyconic projection. 1927 North American datum.  
10,000-foot grids based on Oregon coordinate system,  
north and south zones  
1000-meter Universal Transverse Mercator grid ticks.  
To place on the predicted North American Datum 1983  
move the projection lines 19 meters north and  
87 meters east as shown by dashed corner ticks  
Fine red dashed lines indicate selected fence lines  
There may be private inholdings within the boundaries of  
the National or State reservations shown on this map.

Scale 1:24,000  
CONTOUR INTERVAL 20 FEET  
NATIONAL GEODETIC DATUM OF 1929

ROAD CLASSIFICATION  
Unimproved dirt

Light-duty

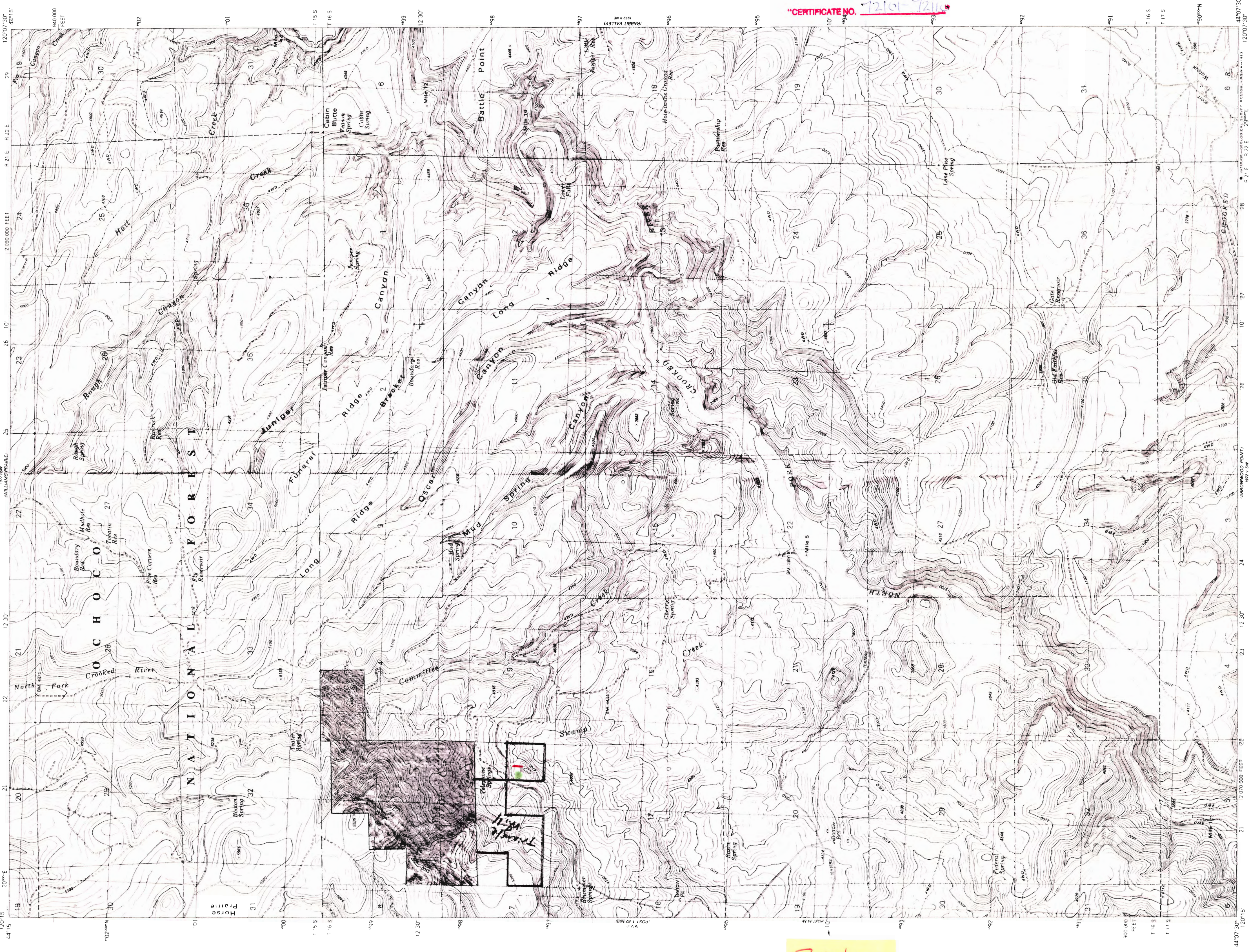
DERR MEADOWS, OREG.  
44119 09 1E 024  
1966  
PHOTOREVISED 1985  
DMA, 2072 IV NW-SERIES 1985

Apps. R-80892 & R-80902

148

UNITED STATES  
DEPARTMENT OF THE INTERIOR  
GEOLOGICAL SURVEY

COMMITTEE CREEK QUADRANGLE  
OREGON-CROOK CO.  
7.5 MINUTE SERIES (TOPOGRAPHIC)



Application No. *R-80892 thru R-80902*  
 Permit No. *72101-72111*  
 "CERTIFICATE NO. *72101-72111*"

Mapped, edited, and published by the Geological Survey  
 Control by USGS and NOS/NOAA  
 Topography by photogrammetric methods from aerial photographs taken 1974. Field checked 1977. Map edited 1983.  
 Projection and 10,000-foot grid ticks. Oregon coordinate system, south zone (Lambert conformal conic).  
 1000-meter Universal Transverse Mercator grid, zone 10 1927 North American Datum.  
 To place on the predicted North American Datum 1983, move the projection lines 19 meters north and 88 meters east as shown by dashed corner ticks.  
 Fine red dashed lines indicate selected fence and field lines where generally visible on aerial photographs.  
 This information is unclassified.  
 There may be private inholdings within the boundaries of the National or State reservations shown on this map.

Scale: 1:24,000  
 Contour Interval: 20 Feet  
 National Geodetic Vertical Datum of 1929

Scale bars: 1 Mile, 1 Kilometer, 1000 Feet, 500 Feet, 200 Feet, 100 Feet, 50 Feet, 25 Feet, 10 Feet, 5 Feet, 2 Feet, 1 Foot, 0.5 Feet, 0.2 Feet, 0.1 Feet

Legend:  
 Primary highway: Light-duty road, hard or hard surface  
 Secondary highway: Improved surface, hard surface  
 Interstate Route: U.S. Route, State Route  
 Light-duty road, hard or hard surface  
 Improved surface  
 Light-duty road, hard or hard surface  
 Improved surface  
 Light-duty road, hard or hard surface  
 Improved surface

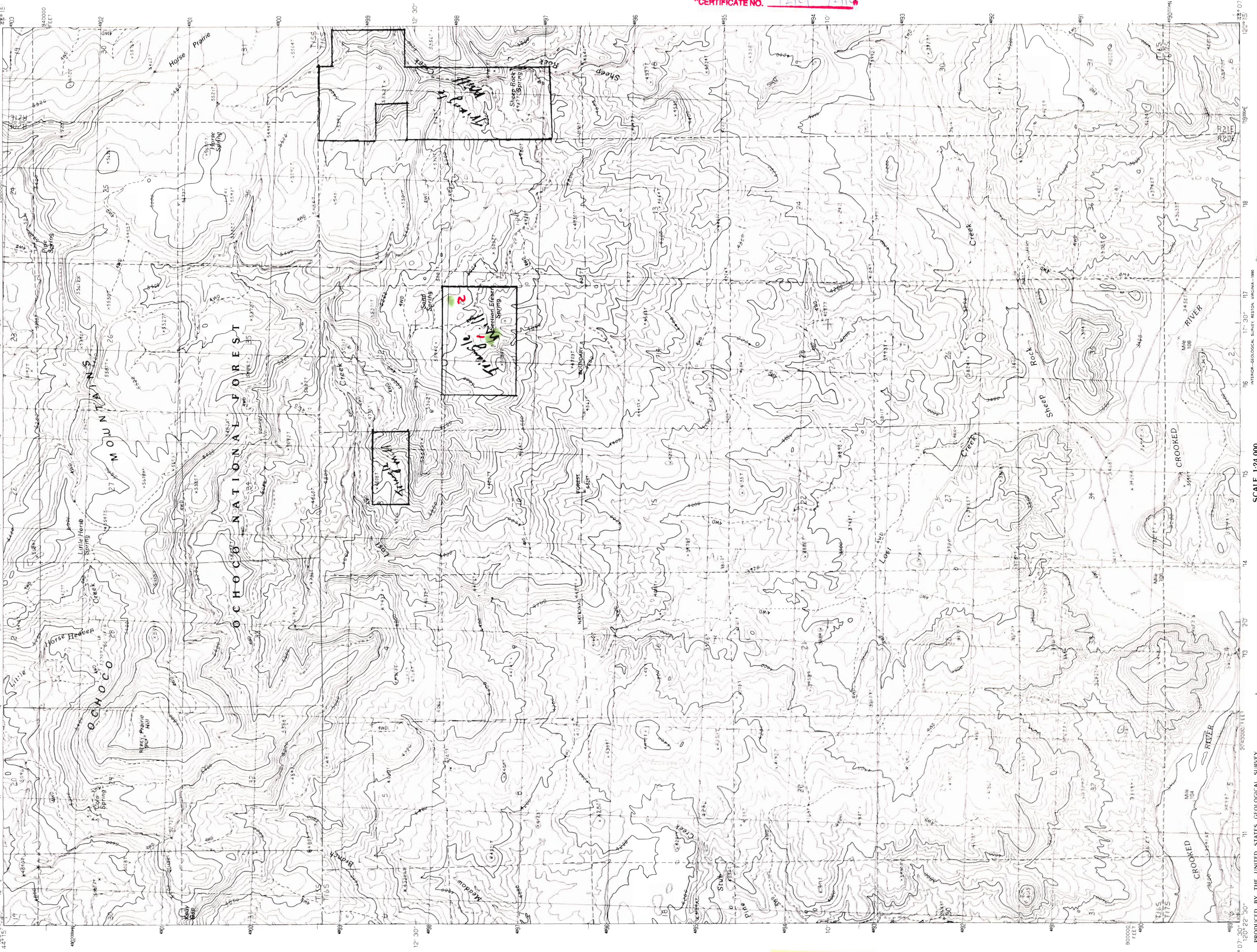
Map of Oregon showing the location of the Committee Creek Quadrangle.

COMMITTEE CREEK, OREG.  
 N4407 5' W, W12007 57.5  
 1983  
 DMA 1972 II NW-SERIES V892

S. Ochoco  
 Triangle Mill

Apps. R-80892 & R-80902

DEC 30 1984  
 WATER RESOURCES  
 SALEM, OREGON



Application No. R-80892-K-80902  
Permit No.

CERTIFICATE NO. 72101-72110

RECEIVED  
DEC 30 1984  
WATER RESOURCES DEPT.  
SALEM, OREGON

**ROAD LEGEND**

- Improved Road
- Unimproved Road
- Trail
- Interstate Route
- U. S. Route
- State Route

QUADRANGLE LOCATION

1 2 3  
4 5 6  
7 8

1	Clackamas
2	Local Min.
3	W. Harms Prairie
4	Post
5	W. Harms Creek
6	Mule Deer Ridge
7	Drake Butte
8	Arrowwood Point

ALSO INDICATES QUADRANGLE NAMES

**SCALE 1:24 000**

1 2 3 4 5 6 7 8 9 10  
0 100 200 300 400 500 600 700 800 900 1000  
KILOMETERS METERS FEET

CONTOUR INTERVAL 40 FEET  
SUPPLEMENTARY CONTOUR INTERVAL 20 FEET  
To convert meters to feet multiply by 2.2046  
To convert feet to meters multiply by .3048

PRODUCTION BY THE UNITED STATES GEOLOGICAL SURVEY  
CONTROL FROM AERIAL PHOTOGRAPHS TAKEN, USGS AND NOS, NOAA  
FIELD CHECKED, 1986; MAP EDITED, 1990  
PROJECTION, UTM; UNIVERSAL TRANSVERSE MERCATOR  
GRID, 10,000 FOOT STATE GRID TICS  
UTM GRID DECLINATION, 1 52 EAST  
1990 MAGNETIC NORTH DECLINATION, 1 30 EAST  
HORIZONTAL DATUM, 1927 NORTH AMERICAN DATUM  
To place on the predicted North American Datum of 1983,  
move the projection lines as shown by dashed corner tie,  
(20 meters north and 89 meters east)  
There may be private inholdings within the boundaries of any  
Federal or State reservations shown on this map

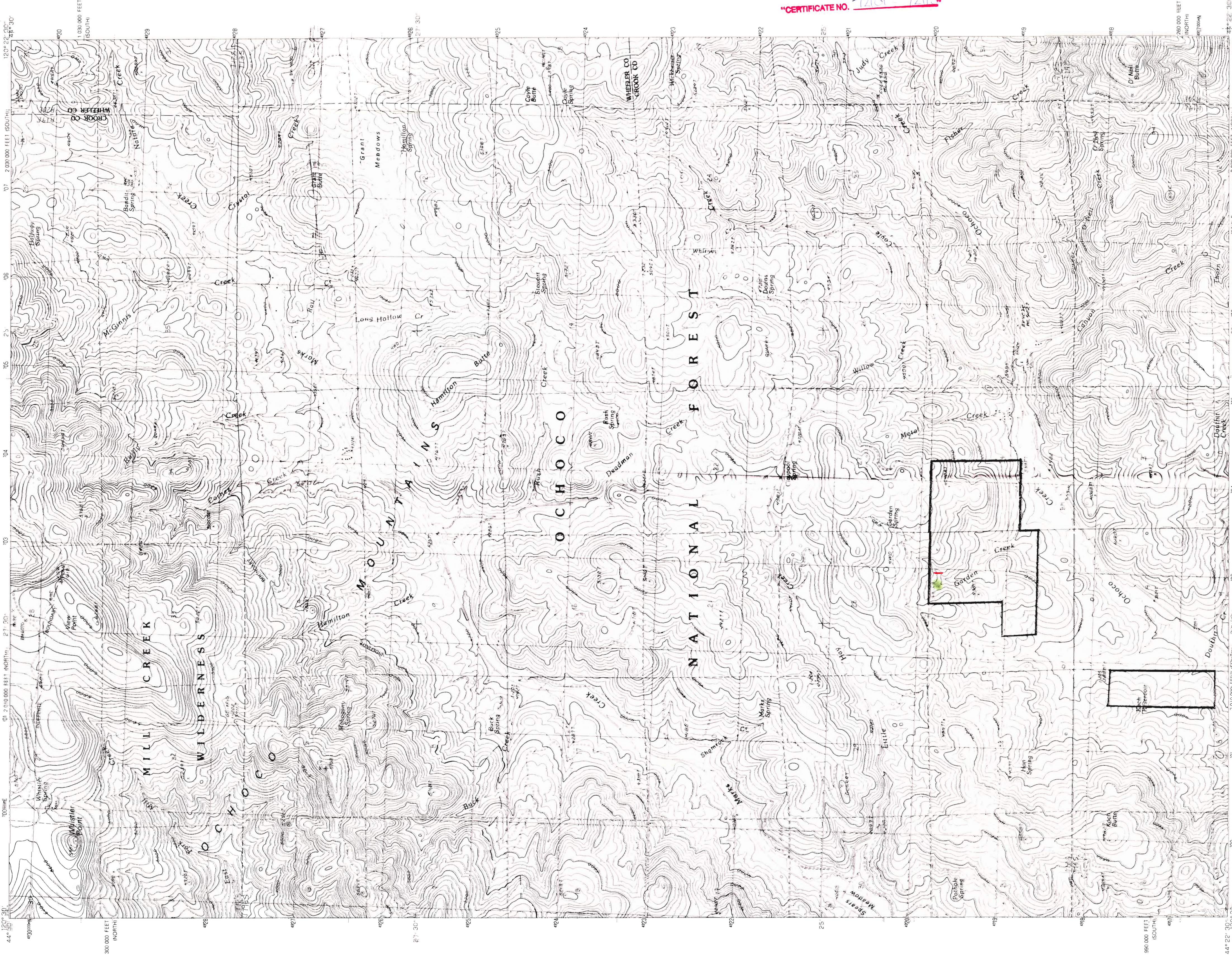
**PROVISIONAL MAP**  
Produced from original  
manuscript drawings. Infor-  
mation shown as of date of  
field check.

THIS MAP COMPLETES WITH NATIONAL MAP ACCURACY STANDARDS  
FOR SALE BY U.S. GEOLOGICAL SURVEY, D.N.E.R., COLORADO 80225, U.S. RESTON, VIRGINIA 22092

PRAIRIE HILL, OREGON  
PROVISIONAL EDITION 1990  
44120-B3-TF-024

Triangle Mill

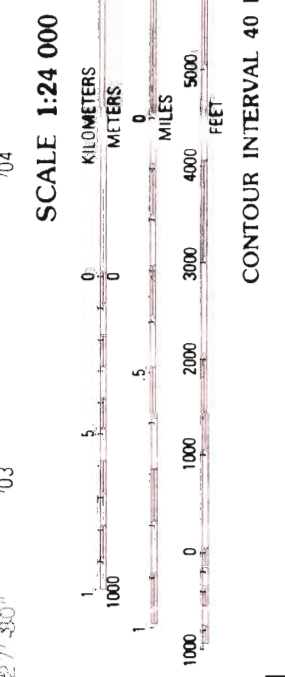
Apps. R-80892 & R-80902



Application No. R-80892 - R-80902  
Permit No.

\*CERTIFICATE NO. 7201 - 7210\*

PRODUCED BY THE UNITED STATES GEOLOGICAL SURVEY  
 COMPILED FROM AERIAL PHOTOGRAPHS TAKEN IN 1964 AND 1984  
 FIELD CHECKED IN 1986. MAP EDITED IN 1990  
 CONVERSION TO METERS AND MILES BY THE GEOLOGICAL SURVEY  
 GRID 1000-METER UNIVERSAL TRANSVERSE MERCATOR, ZONE 10  
 10,000-FOOT STATE GRID TICS OREGON, SOUTH AND NORTH ZONES  
 UTM GRID DECLINATION  
 1990 MAGNETIC NORTH DECLINATION ..... 18°00' EAST  
 VERTICAL DATUM ..... NATIONAL GEODETIC VERTICAL DATUM OF 1929  
 HORIZONTAL DATUM ..... NAD 83  
 To place a projection line as shown by dashed corner ticks  
 move the projection lines as shown by dashed corner ticks  
 (20 meters north and 89 meters east)  
 There may be private inholdings within the boundaries of any  
 Federal or State reservations shown on this map



**PROVISIONAL MAP**  
 Produced from original  
 manuscript drawings. Infor-  
 mation shown as of date of  
 field check.

THIS MAP COMPLIES WITH NATIONAL MAP ACCURACY STANDARDS  
 FOR SALE BY U.S. GEOLOGICAL SURVEY  
 DENVER, COLORADO 80225 OR RESTON, VIRGINIA 22092

1	2	3	4	5	6	7	8
1	2	3	4	5	6	7	8

QUADRANGLE (1/4) 10N  
 1 Otal Mountain  
 2 Stephenson Mtn  
 3 Lawson Mountain  
 4  
 5 Otal M. Butte  
 6 Cattle Butte  
 7 Grouse Butte  
 8 Round Mountain  
 9  
 10  
 11  
 12  
 13  
 14  
 15  
 16  
 17  
 18  
 19  
 20  
 21  
 22  
 23  
 24  
 25  
 26  
 27  
 28  
 29  
 30  
 31  
 32  
 33  
 34  
 35  
 36  
 37  
 38  
 39  
 40

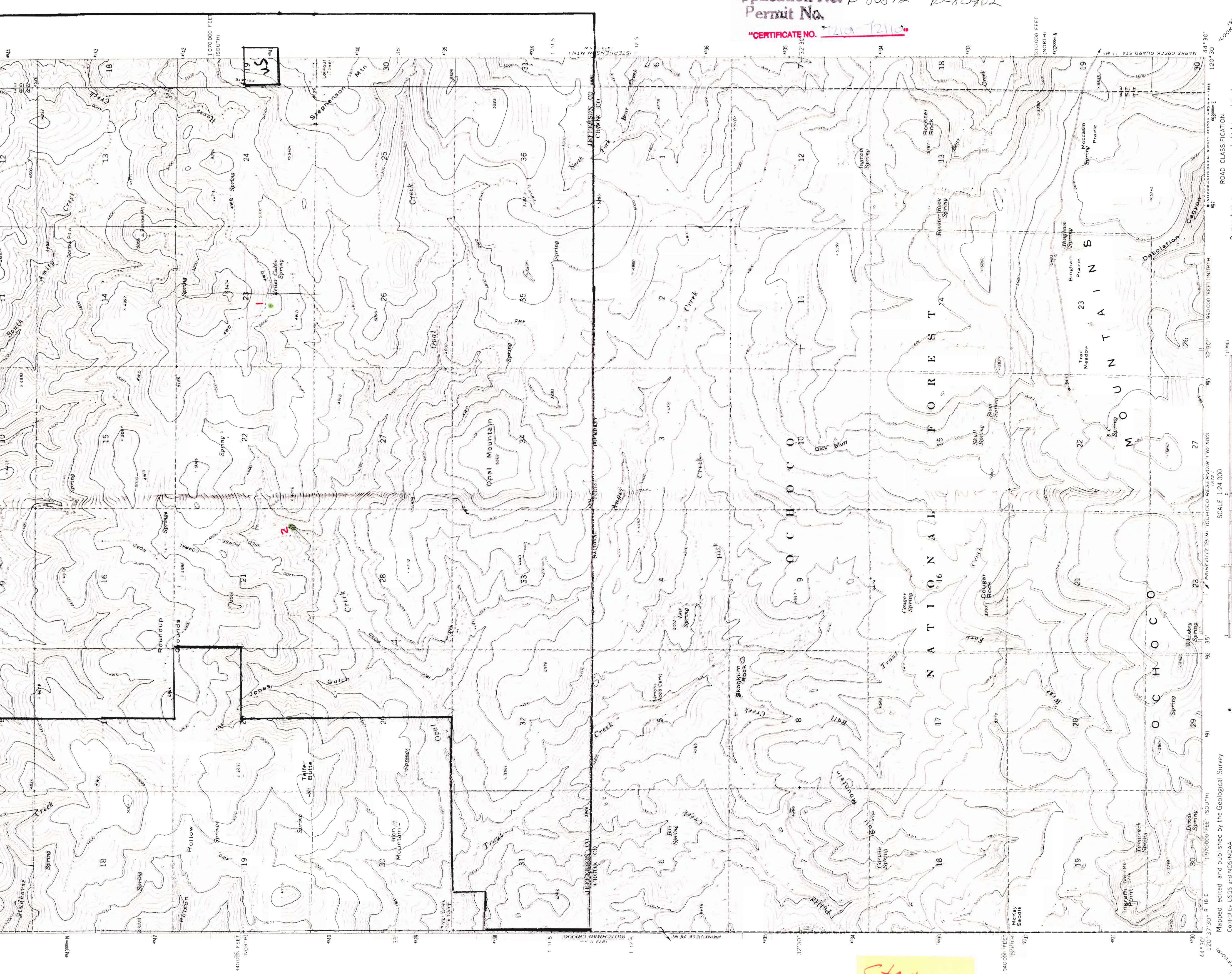
**ROAD LEGEND**  
 Improved Road  
 Unimproved Road  
 Trail  
 Interstate Route  
 U.S. Route  
 State Route

Apps. R-80892 & R-80902



UNITED STATES  
DEPARTMENT OF THE INTERIOR  
GEOLOGICAL SURVEY

148



OPAL MOUNTAIN QUADRANGLE  
OREGON  
7.5 MINUTE SERIES (TOPOGRAPHIC)  
1:250,000

Application No. R-80892 - R-80902  
Permit No.  
"CERTIFICATE NO. 1210-7210"

ROAD CLASSIFICATION  
Light duty road hard or improved surface  
Secondary highway hard surface  
Unimproved road hard surface  
Interstate Route U.S. Route State Route

SCALE 1:24,000  
CONTOUR INTERVAL 40 FEET  
NATIONAL GEODESIC DATUM OF 1983

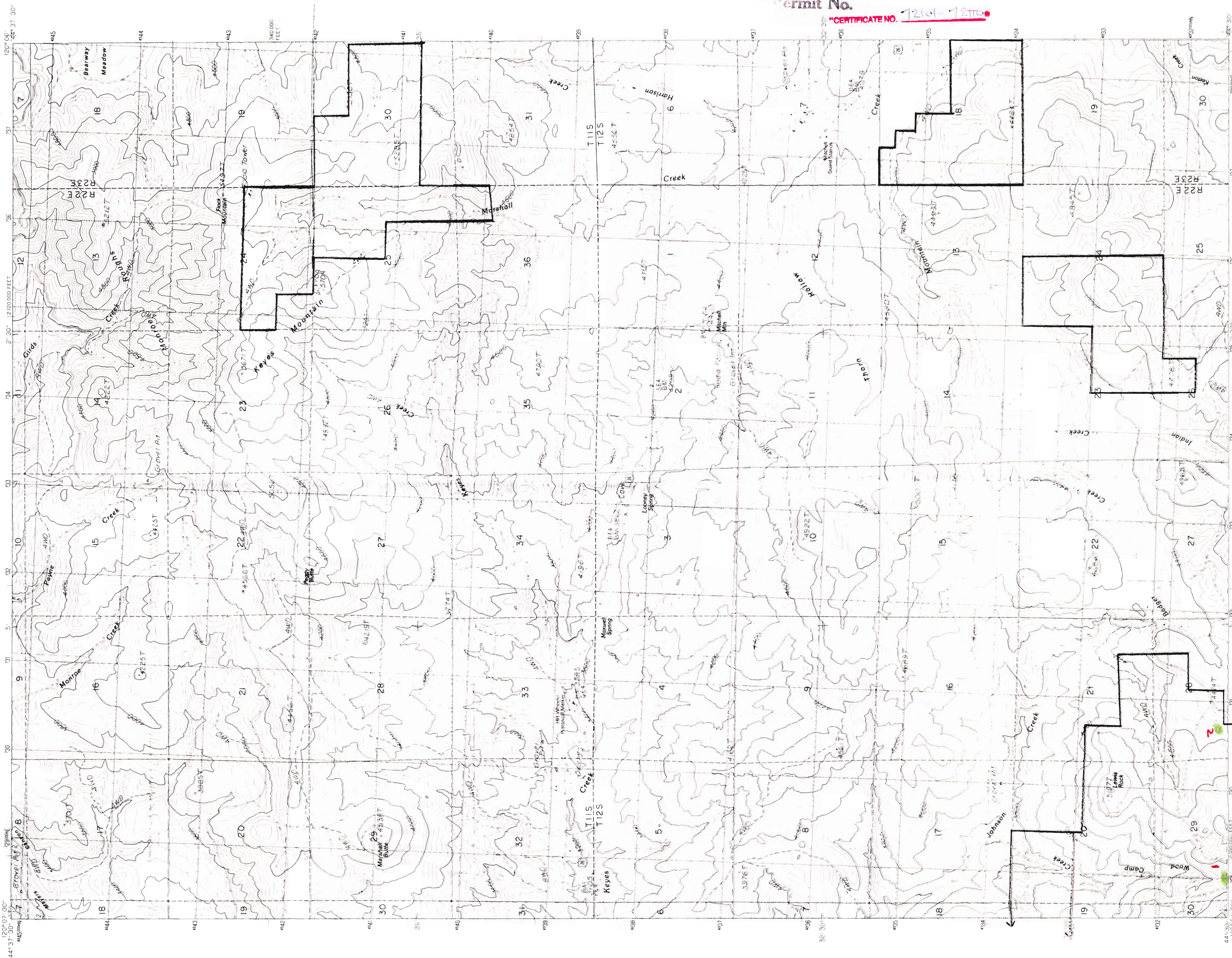
THIS MAP COMPLETES WITH NATIONAL MAP ACCURACY STANDARDS  
FOR SALE BY U.S. GEOLOGICAL SURVEY, DENVER, COLORADO 80225, OR RESTON, VIRGINIA 22092  
A FOLDER DESCRIBING TOPOGRAPHIC MAPS AND SYMBOLS IS AVAILABLE ON REQUEST

UTM GRID AND 1983 MAGNETIC NORTH  
DEFINITION AT CENTER OF SHEET

Topography by photogrammetry; method - from aerial photographs taken 1967; field checked 1966  
Polyconic projection; 1927 North American datum  
10,000-foot grids based on Oregon coordinate system, south and north zones  
1:250,000 scale  
Center Universal Transverse Mercator grid ticks  
To place on the geoid North American Datum 1983  
90 meters east as shown by dashed corner ticks  
Fine red dashed lines indicate selected fence lines  
Where omitted, land lines have not been established  
There may be private inholdings within the boundaries of the National or State reservations shown on this map

Stephens

Apps. R-80892 & R-80902



Application No. R-80892 - R-80902  
Permit No.

CERTIFICATE NO. 12101-12102

PRODUCED BY THE UNITED STATES GEOLOGICAL SURVEY  
CONTROLLED BY AERIAL PHOTOGRAPHS TAKEN 1963  
LIMITED REVISION FROM AERIAL PHOTOGRAPHS TAKEN 1965  
PRODUCTION CHECKED 1985 MAP EDITED 1986  
GRID 100-METER UNIVERSAL TRANSVERSE MERCATOR ZONE 10  
UTM GRID DECLINATION 1980 10° 00' 00" W  
MAGNETIC NORTH DECLINATION 1980 10° 00' 00" W  
HORIZONTAL DATUM WITHIN 1927 NORTH AMERICAN DATUM  
To place on the predicted North American Datum of 1983,  
move the projection lines as shown by dashed corner ticks  
19 meters north and 88 meters east!

PROVISIONAL MAP  
Produced from original  
manuscript drawings. Infor-  
mation shown as of date of  
field check.

SCALE: 1:24 000  
KILOMETERS 0 1 2  
METERS 0 1000 2000  
MILES 0 1 2  
CONTOUR INTERVAL 40 FEET  
SUPPLEMENTARY CONTOUR INTERVAL 20 FEET  
To convert meters to feet multiply by 3.2808  
To convert feet to meters multiply by 0.3048

ROAD LEGEND  
Improved Road  
Unimproved Road  
Trail  
Interstate Route  
U.S. Route  
State Route

QUADRANGLE LOCATION  
1 2 3  
4 5  
6 7 8  
9  
10 11 12  
13 14 15  
16 17 18  
19 20 21  
22 23 24  
25 26 27  
28 29 30  
31 32 33  
34 35 36  
37 38 39  
40 41 42  
43 44 45

ADJOINING 7.5 QUADRANGLE NAMES  
1  
2  
3  
4  
5  
6  
7  
8  
9  
10  
11  
12  
13  
14  
15  
16  
17  
18  
19  
20  
21  
22  
23  
24  
25  
26  
27  
28  
29  
30  
31  
32  
33  
34  
35  
36  
37  
38  
39  
40  
41  
42  
43  
44  
45

KEYES MTN., OREG.  
PROVISIONAL EDITION 1988  
44120-ET-024



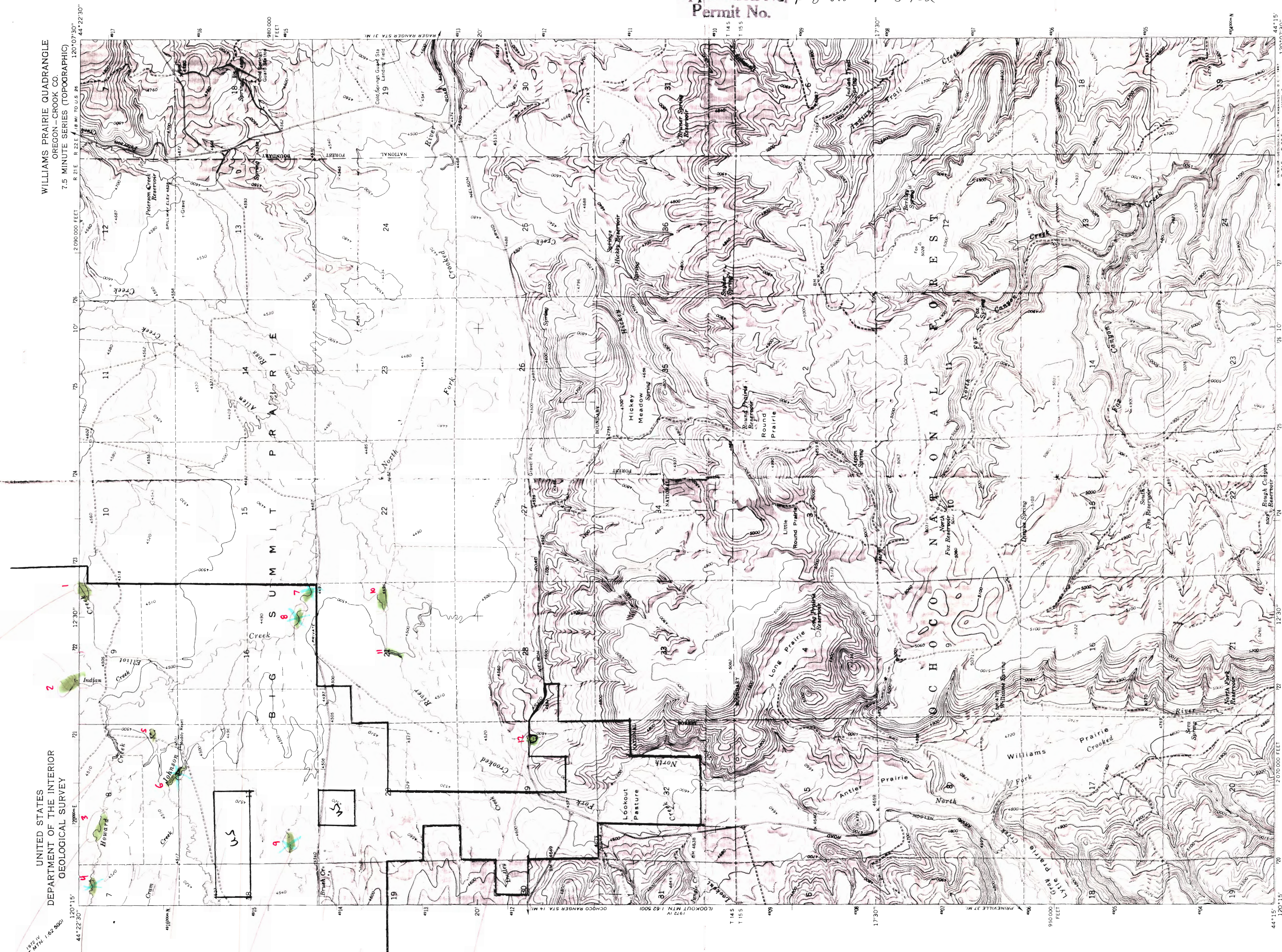
148

UNITED STATES  
DEPARTMENT OF THE INTERIOR  
GEOLOGICAL SURVEY

WILLIAMS PRAIRIE QUADRANGLE  
OREGON—CROOK CO.  
7.5 MINUTE SERIES (TOPOGRAPHIC)

CERTIFICATE NO. 72161-7216

Application No. R-80892 - R-80902  
Permit No.



Maped, edited, and published by the Geological Survey  
Control by USGS and USC&GS  
Topography by photogrammetric methods from aerial  
photographs taken 1959 and planimetric surveys 1965  
Polyconic projection, 1927 North American datum,  
10,000-foot grid based on Oregon coordinate system,  
1000-meter Universal Transverse Mercator grid ticks,  
zone 10, shown in blue  
Fine red dashed lines indicate selected fence lines

UTM GRID AND 1965 MAGNETIC NORTH  
DECLINATION AT CENTER OF SHEET

FOR SALE BY U.S. GEOLOGICAL SURVEY, DENVER, COLORADO 80225, OR WASHINGTON, D. C. 20242  
A FOLDER DESCRIBING TOPOGRAPHIC MAPS AND SYMBOLS IS AVAILABLE ON REQUEST

WILLIAMS PRAIRIE, OREG.  
N4415—W12007.5/7.5  
1965  
AMS 1972 1 SW—SERIES V892

RECEIVED  
DEC 8 1984  
WATER RESOURCES DIVISION  
SALEM, OREGON

ROAD CLASSIFICATION  
Unimproved dirt  
Light duty

SCALE 1:24,000  
1 000 0 1000 2000 3000 4000 5000 6000 7000 8000 9000 10000  
1 000 0 1000 2000 3000 4000 5000 6000 7000 8000 9000 10000  
CONTOUR INTERVAL 20 FEET  
DOTTED LINES REPRESENT 10-FOOT CONTOURS  
DAVUM IS MEAN SEA LEVEL

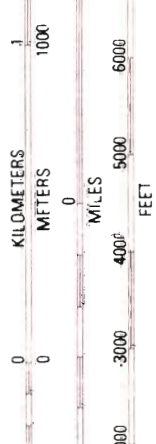
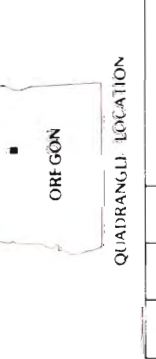
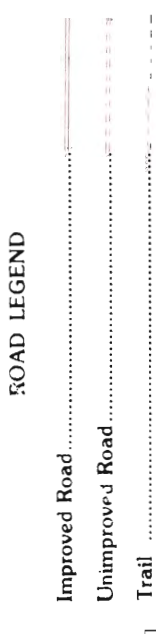
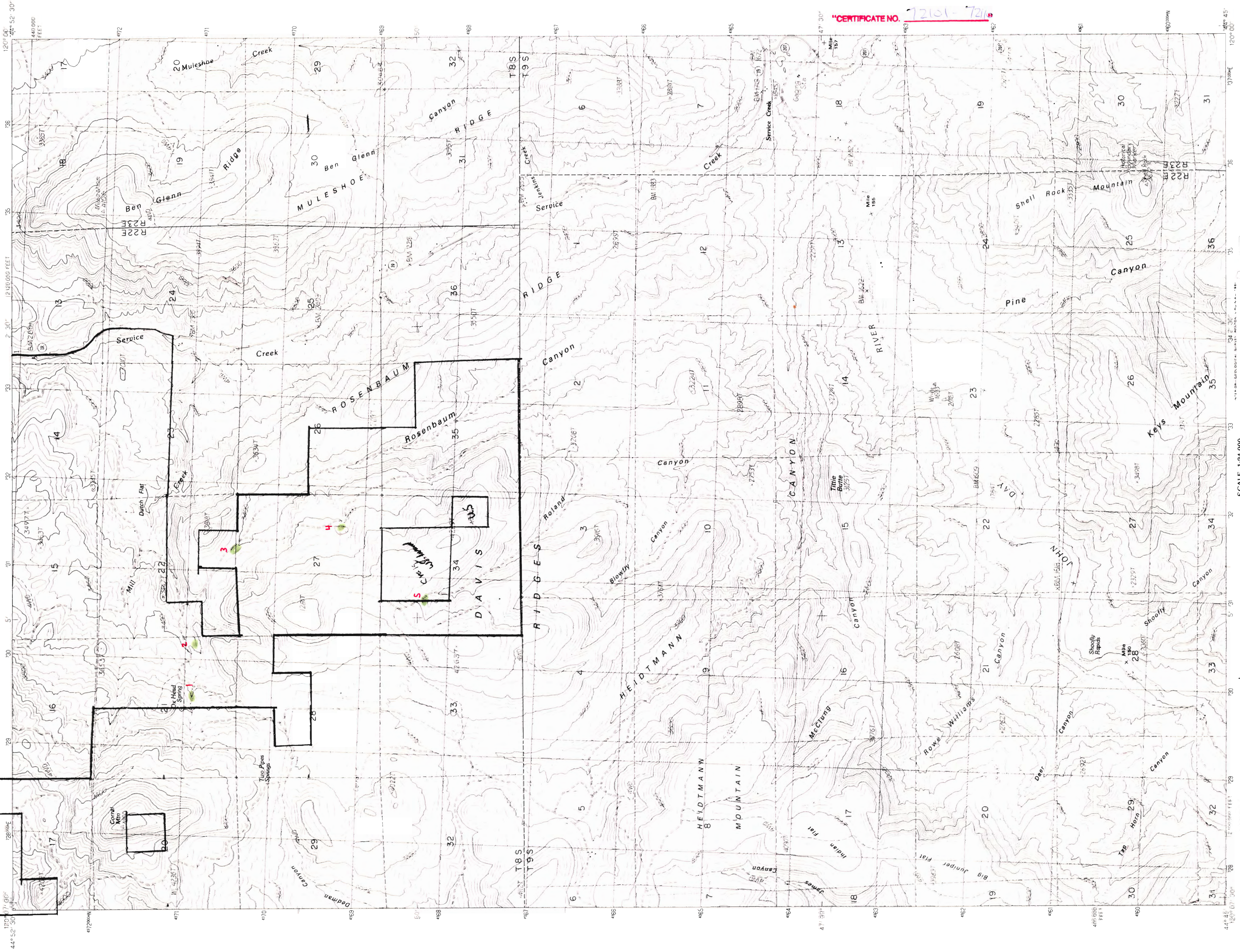
QUADRANGLE LOCATION  
OREGON

Apps. R-80892 & R-80902

Application R-80892 - L-80902  
Permit No.

"CERTIFICATE NO. 72151-7216"

DEC 30 1984  
WATER RESOURCES DIVISION  
SALEM, OREGON



PROVISIONAL MAP  
Produced from original  
manuscript drawings. Infor-  
mation shown as of date of  
field check.

PRODUCED BY THE UNITED STATES GEOLOGICAL SURVEY  
CONTRIBUTION BY AERIAL PHOTOGRAMMETRY TAKEN  
FREE CHECKED 1986  
1985  
1984  
1983  
1982  
1981  
1980  
1979  
1978  
1977  
1976  
1975  
1974  
1973  
1972  
1971  
1970  
1969  
1968  
1967  
1966  
1965  
1964  
1963  
1962  
1961  
1960  
1959  
1958  
1957  
1956  
1955  
1954  
1953  
1952  
1951  
1950  
1949  
1948  
1947  
1946  
1945  
1944  
1943  
1942  
1941  
1940  
1939  
1938  
1937  
1936  
1935  
1934  
1933  
1932  
1931  
1930  
1929  
1928  
1927  
1926  
1925  
1924  
1923  
1922  
1921  
1920  
1919  
1918  
1917  
1916  
1915  
1914  
1913  
1912  
1911  
1910  
1909  
1908  
1907  
1906  
1905  
1904  
1903  
1902  
1901  
1900

THIS MAP COMPLETES WITH NATIONAL MAP ACCURACY STANDARDS  
FOR SALE BY U.S. GEOLOGICAL SURVEY, DENVER, COLORADO 80225, OR RESTON, VIRGINIA 22092

44120-G1-TF-024  
PROVISIONAL EDITION 1987  
SERVICE CREEK, OREG.

148

Apps. R-80892 & R-80902