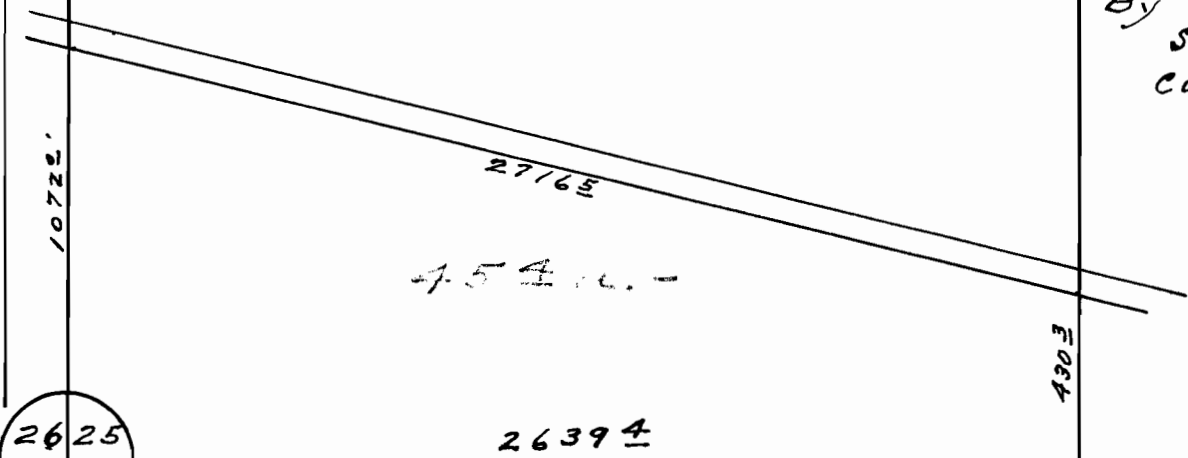


I, H. L. Melton of La Grande Oregon do hereby certify that this map was made from notes taken during an actual survey made by me in June 1954; that the monument shown on this map consisting of an iron pipe 36" Long and the top of which is 6 inches above the ground bears S. 34° 58' E - 2298' from the N.W. Corner of Sec. 36 - T 4 N., R. 27 E. W. M.

H. L. Melton

Map of
Areas in Secs. 25-26-35-36
T. 4 N., R. 27 E. W. M.
Surveyed & staked
in June 1954 -
By H. L. Melton -
Scale: 1" = 500'
Const. = 574 @ 11"



2625
3536

NW 1/4 of NW 1/4

NE 1/4 of NW 1/4

Application No. U-736
Permit No. U-

S. 34° 58' E - 2298'

1884'

20 Acres

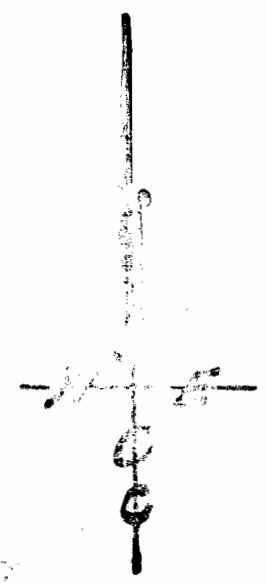
20 Acres

1315'

Well.

SW 1/4 of NW 1/4

SE 1/4 of NW 1/4



H. L. Melton