

800

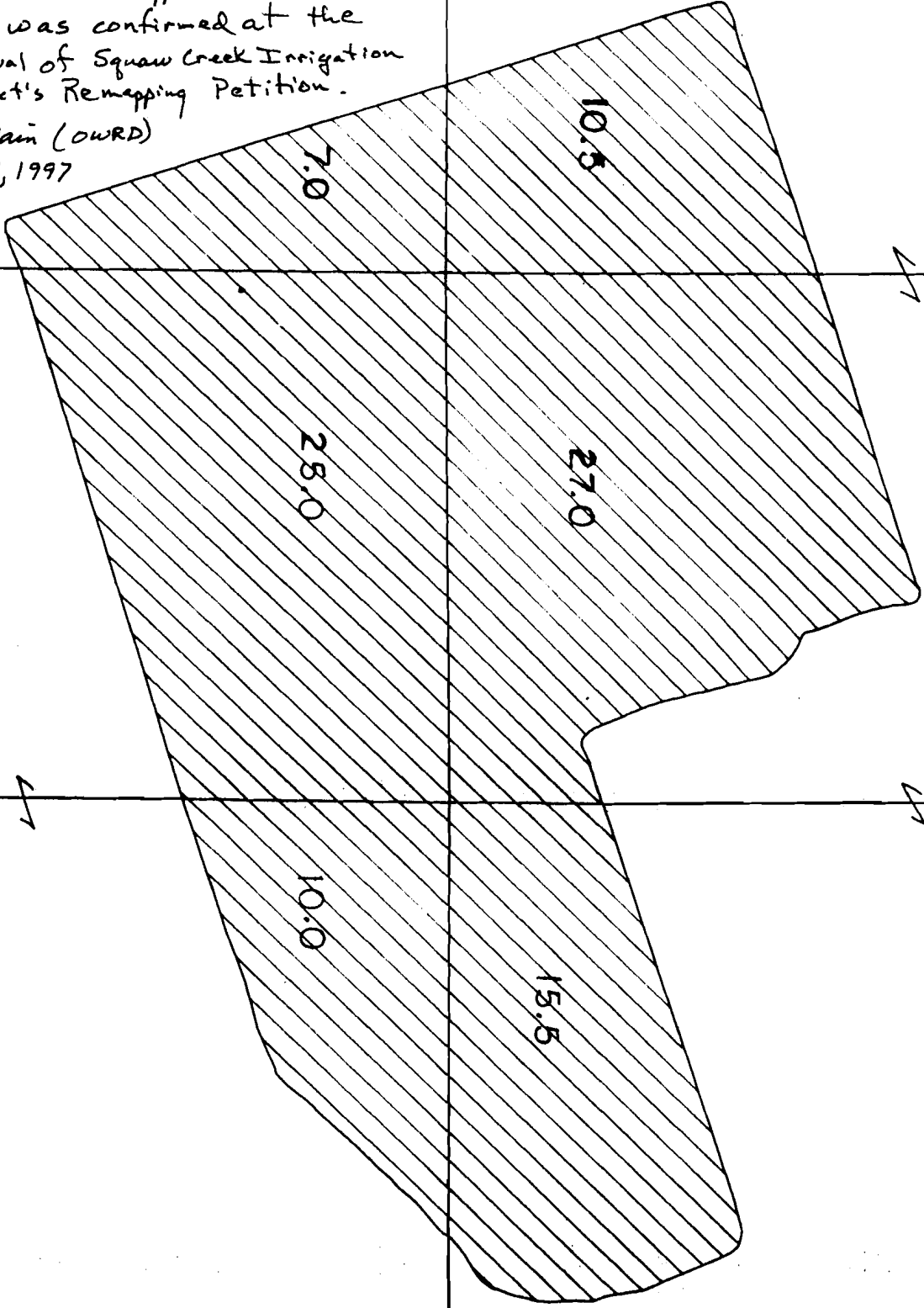
NE 1/4 NW 1/4

Final Proof Map

For Primary irrigation of 82.2 acres
and Supplemental irrigation of 122.0 acres

This right was formerly recorded at
certificate 51433. Transfer of this
right to its mapped location and
use was confirmed at the
approval of Squaw Creek Irrigation
District's Remapping Petition.

Bob Main (OWRD)
Feb. 21, 1997



Supplemental

T. H. S., R. 12 E., W. 10 N.
Section 5
1" = 400'

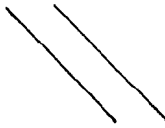
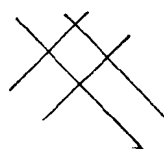
C-74137
SUPERSEDES
C-51433

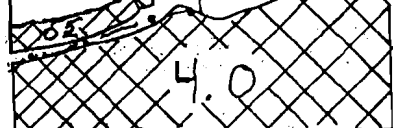
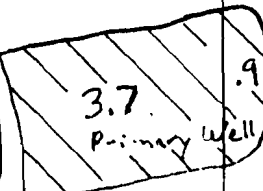
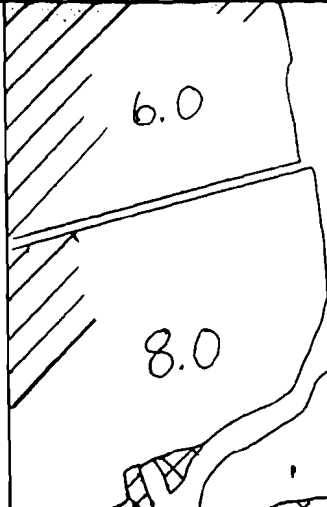
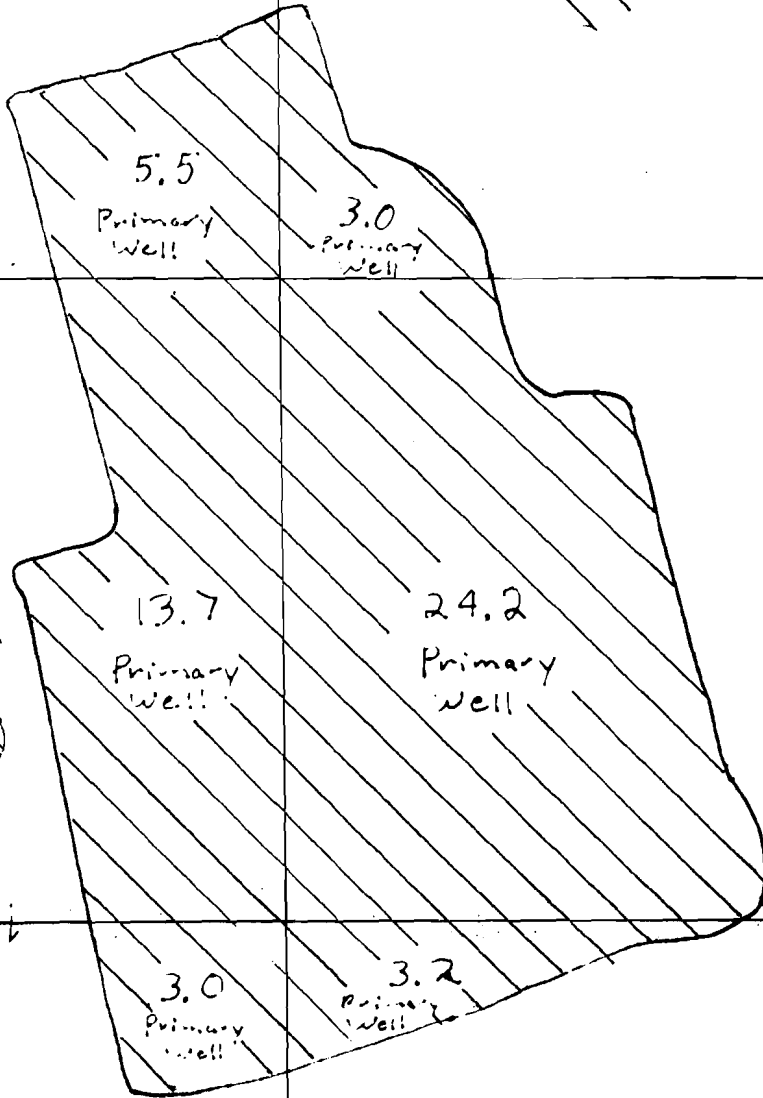
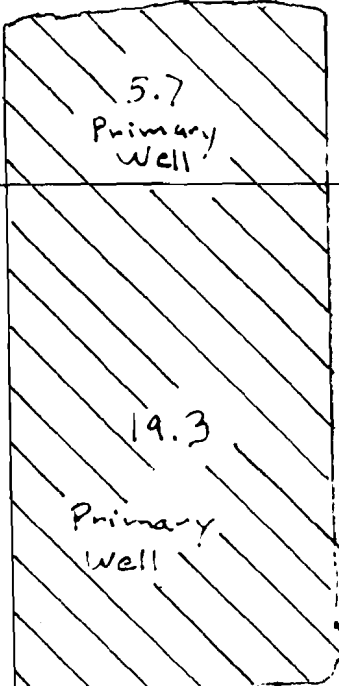
#1 of 3
G-7809

↗

800

1" = 400'

 = Primary from well N↑
 = Supplemental from well



SE 4 SE 4

C-74137
SURPASSURE
C-51433

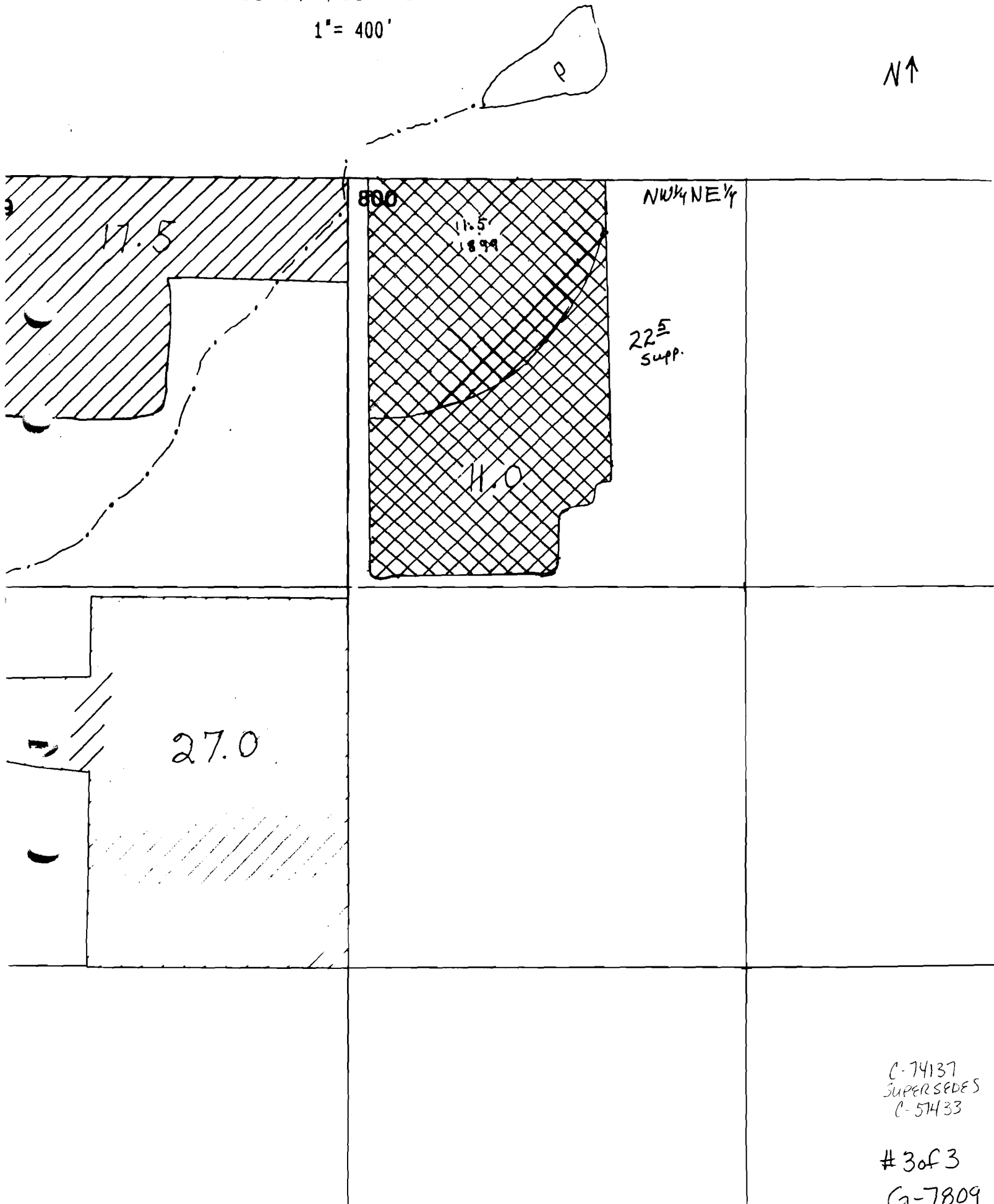
2 of 3

G-7809

DESCHUTES COUNTY

1" = 400'

N ↑



C-74137
SUPERSEDES
C-51433

3 of 3
G-7809