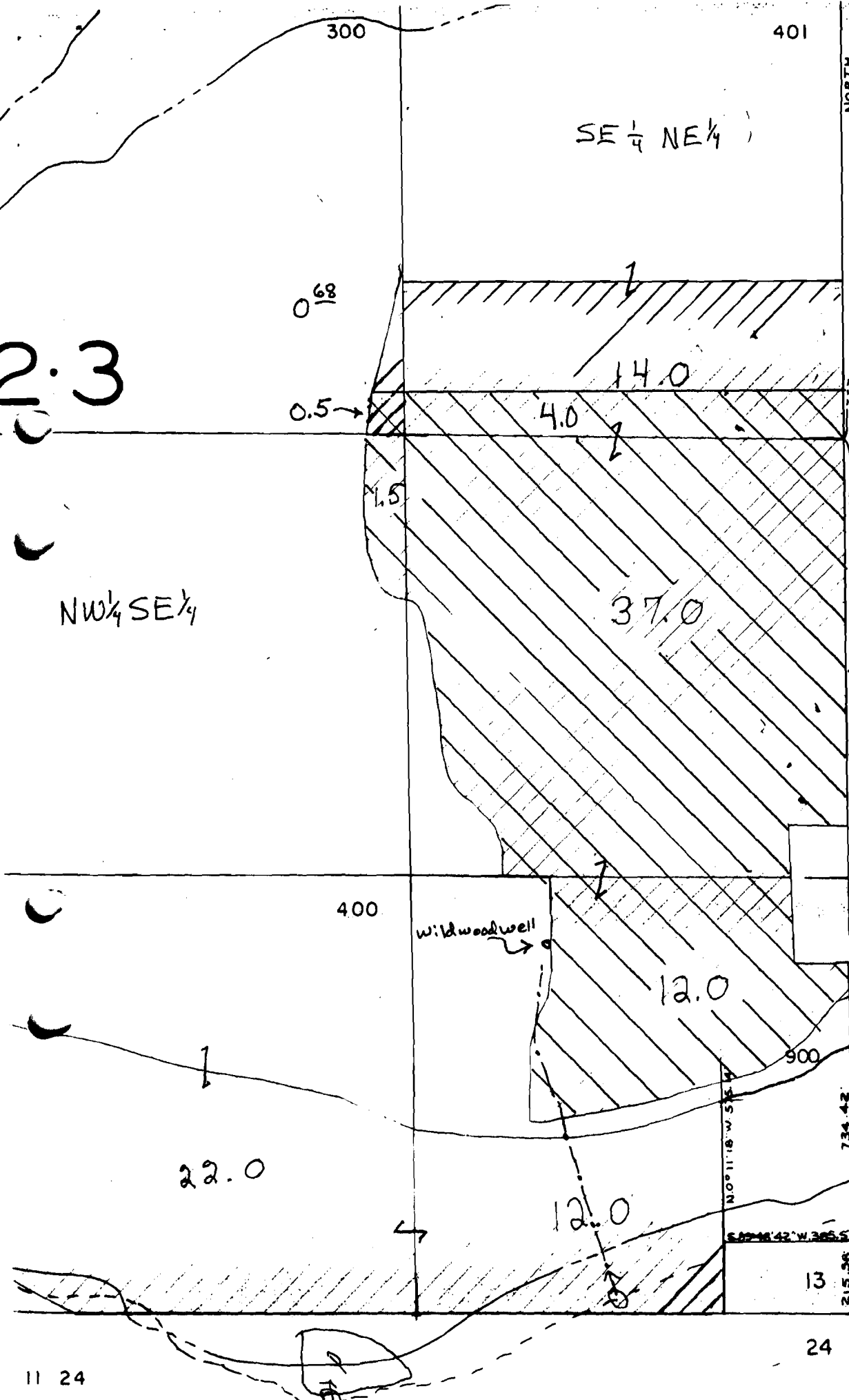


2.3

SE 1/4 NE 1/4

NW 1/4 SE 1/4



N ↑
 1" = 400'
 T. 14 S., R. 11 E., w.m
 Section 13
 Final Proof Map
 Supplemental Irrigation

See Map 12
 14 12
 Supplemental
 See Map 14 12

This right was formerly recorded at certificate 57439
 Transfer of this right to its mapped location was confirmed at the approval of Squaw Creek Irrigation District's Remapping Petition.

Bob Main (OWRD)
 Feb. 20, 1997

C-57439
 SUPERSEDED
 BY C-74138

was permit
 G-5186