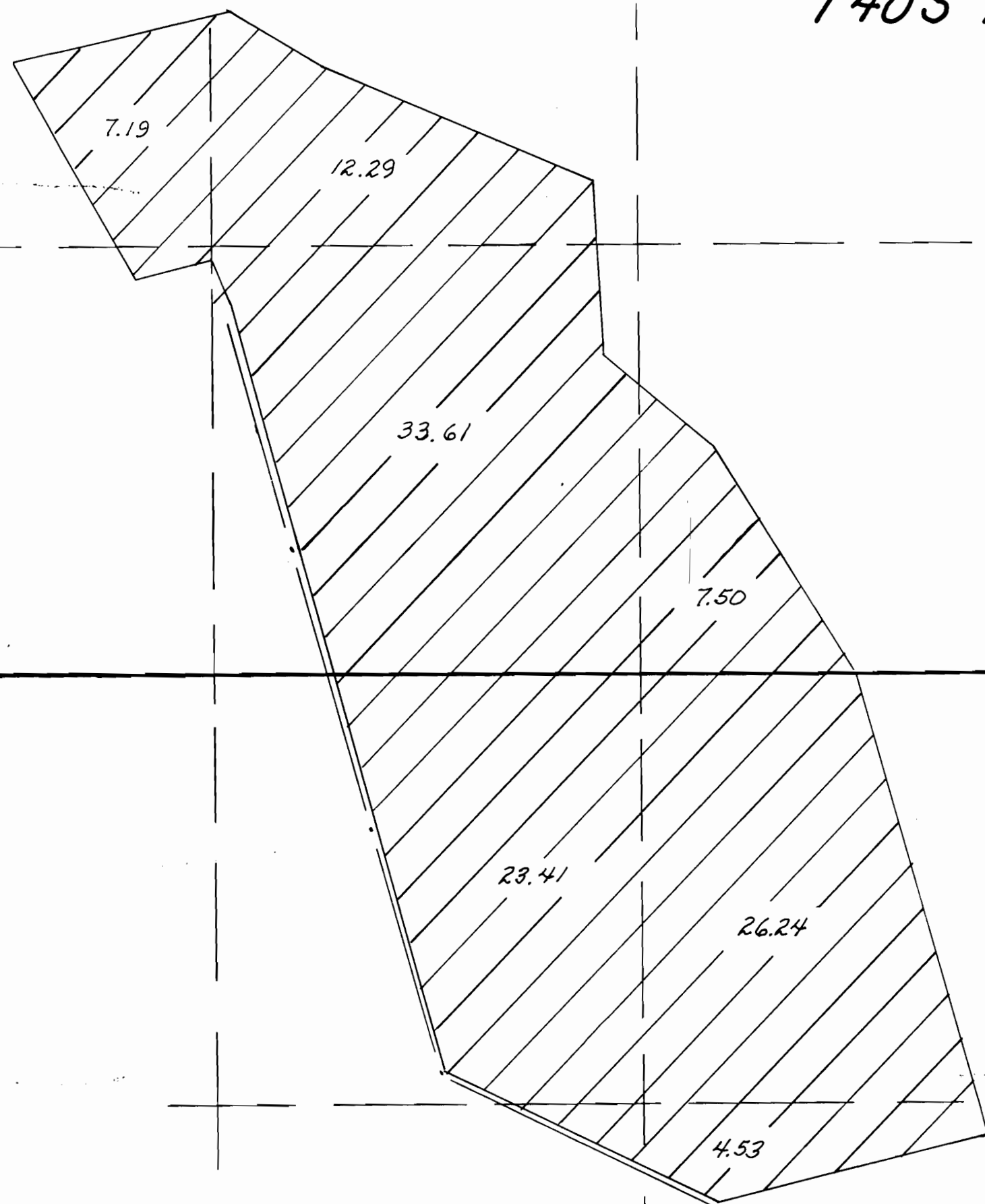


24

T40S R11E, W.M.



SECTION CORNER
 FOUND 2" GALVANIZED IRON PIPE
 WITH 3" BRASS CAP SET IN 1978
 BY L.S. 658

2086

BURIED PIPELINE 8"

WELL

134

25

FINAL PROOF SURVEY

UNDER

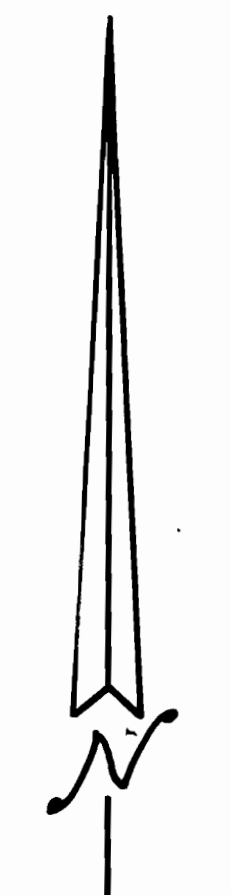
APPLICATION NO. G-12810 PERMIT NO. G-11664

DONALD A. RAJNUS

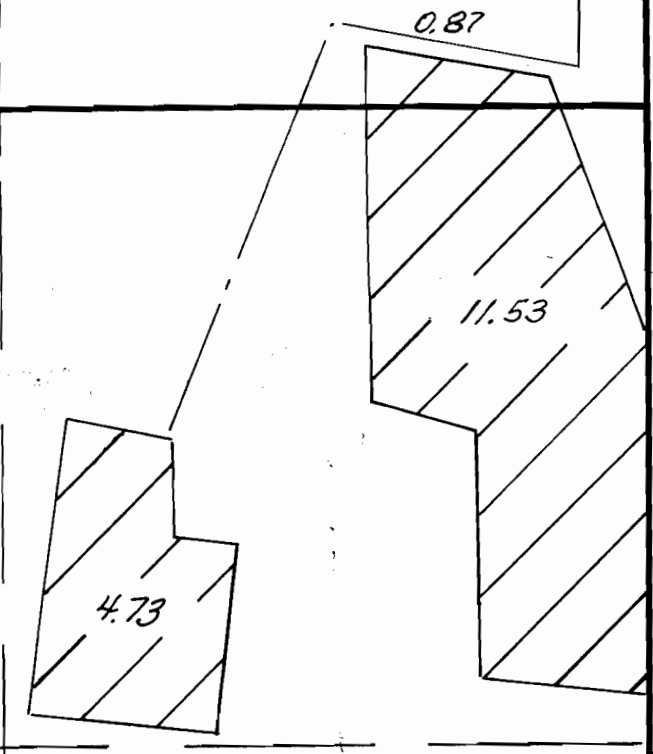
SURVEYED AUGUST 9, 1994 BY Donald W. Stuebel

Donald W. Stuebel

PORTABLE PIPELINE 8"



1" = 400'



36