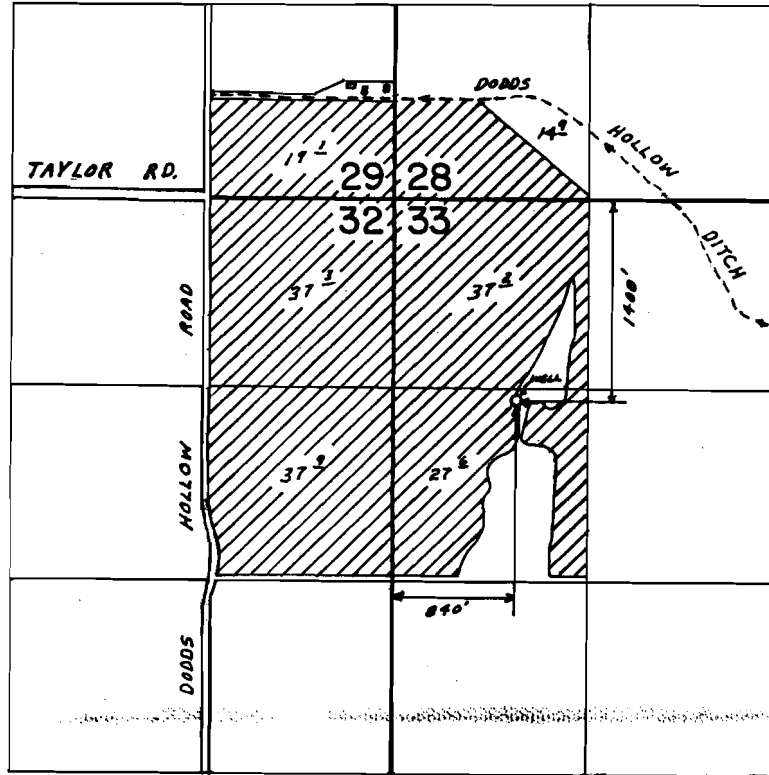


Sp. Or Vol 51 pg 447  
TRANSF 7731 POA

# T. 40 S., R. 11 E., W.M.



SCALE: 1" = 1320'

## FINAL PROOF SURVEY UNDER

Application No. G-10199 Permit No. G-9244  
IN NAME OF

CHARLES V. SHUCK

Surveyed AUG. 18. 19.87, by V.L. CHURCH