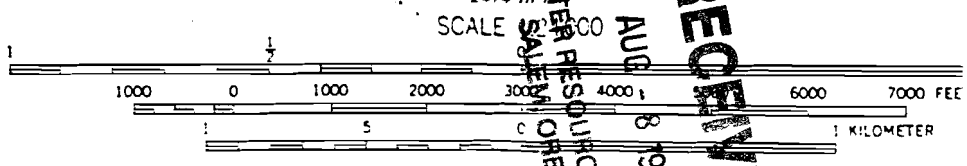
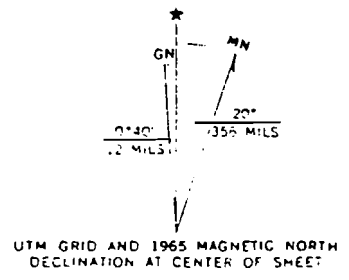


26°00' R. 38 E. R. 39 E. 2 650 000 FEET UNION 7 MI. BAKER 51 MI. 57'30" '25 '26 (CRAIG MOUNTAIN) 2674 III 7
 2700 2699 2690 2696 2691 2694 2695 2696 2699 2700 2703 2705 2710 2715 2725 2730 2735 2740 2745 2750 2755 2760 2765 2770 2775 2780 2785 2790 2795 2800 2805 2810 2815 2820 2825 2830 2835 2840 2845 2850 2855 2860 2865 2870 2875 2880 2885 2890 2895 2900 2905 2910 2915 2920 2925 2930 2935 2940 2945 2950 2955 2960 2965 2970 2975 2980 2985 2990 2995 3000

Mapped, edited, and published by the Geological Survey
 Control by USGS and USC&GS

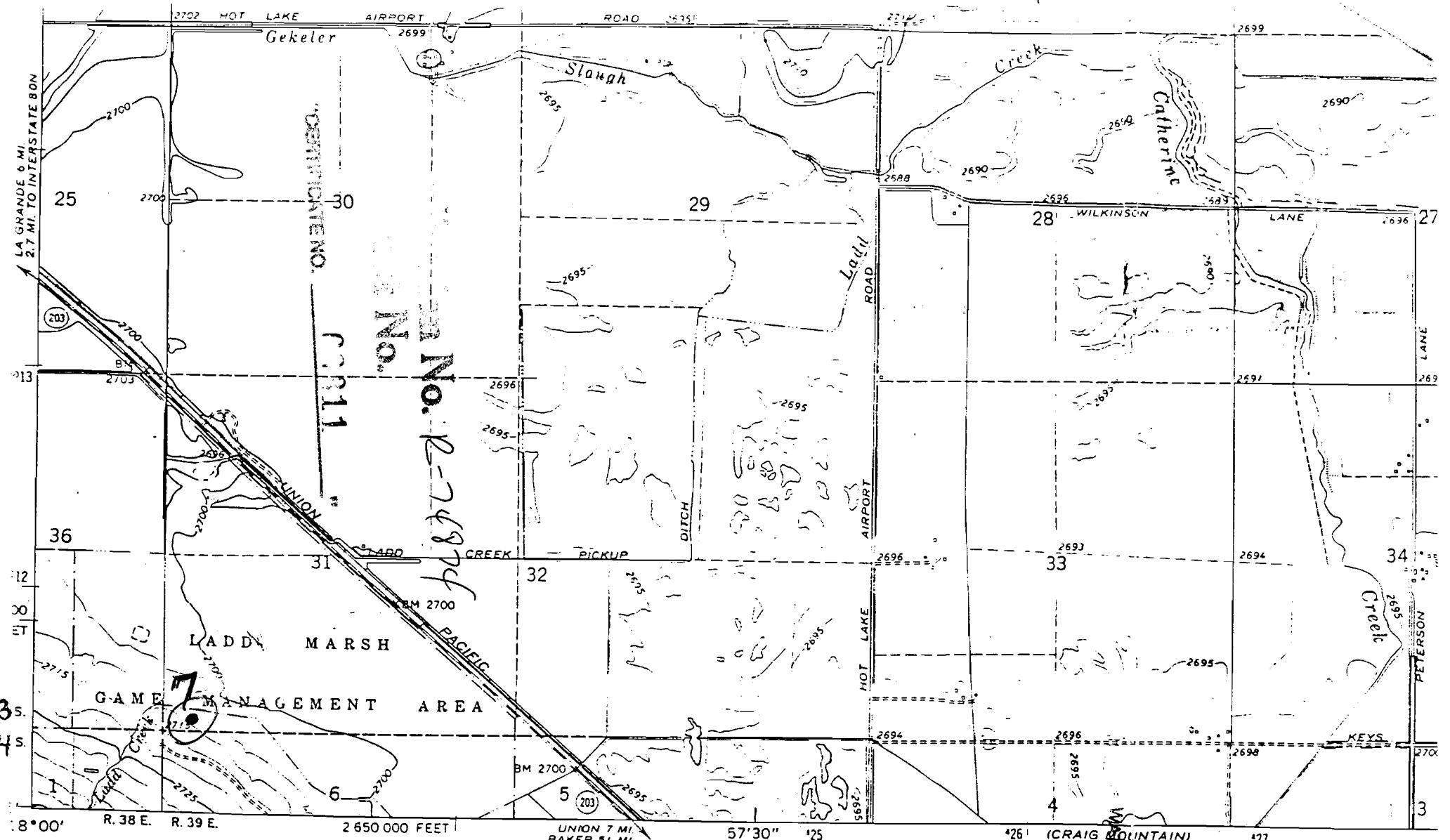
Topography by photogrammetric methods from aerial photographs taken 1963 and planetable surveys 1965

Polyconic projection. 1927 North American datum
 10,000-foot grid based on Oregon coordinate system, north zone
 1000 meter Universal Transverse Mercator grid ticks, zone 11, shown in blue
 Fine red dashed lines indicate selected fence lines

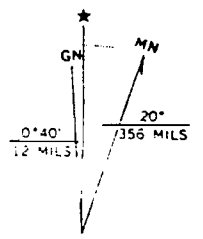


CONTOUR INTERVAL 25 FEET
 DATUM IS MEAN SEA LEVEL

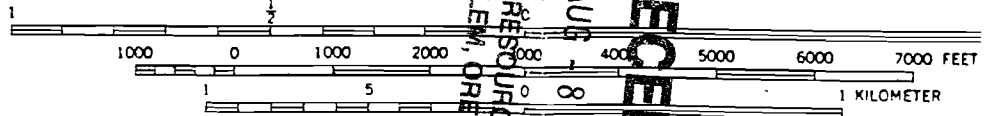
RECEIVED
 AUG 8 1986
 WATER RESOURCES DIVISION
 SALEM OREGON STATE DEPT.



Mapped, edited, and published by the Geological Survey
 Control by USGS and USC&GS
 Topography by photogrammetric methods from aerial
 photographs taken 1963 and planetable surveys 1965
 Polyconic projection. 1927 North American datum
 10,000-foot grid based on Oregon coordinate system,
 north zone
 1000-meter Universal Transverse Mercator grid ticks,
 zone 11, shown in blue
 Fine red dashed lines indicate selected fence lines

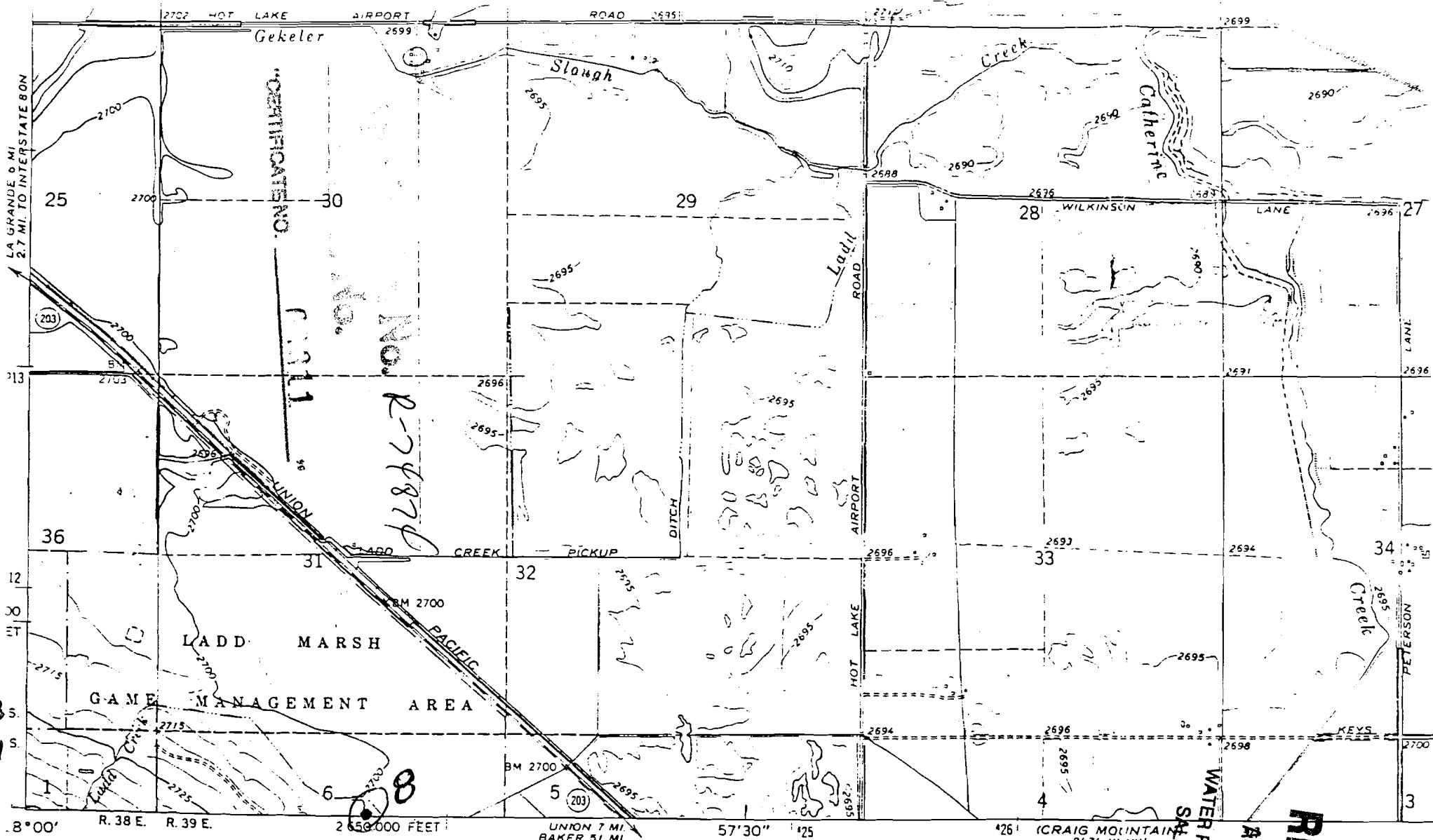


UTM GRID AND 1965 MAGNETIC NORTH DECLINATION AT CENTER OF SHEET

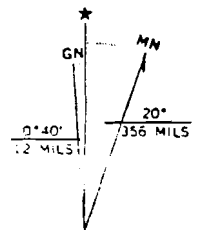


CONTOUR INTERVAL 5 FEET
 DATUM MEAN SEA LEVEL

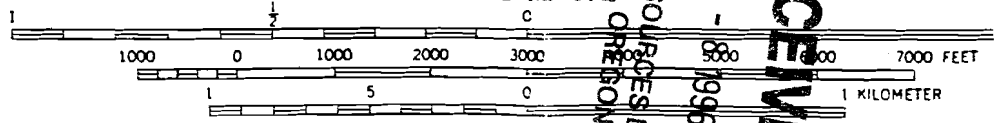
UNION PACIFIC
 SALEM, OREGON
 RECEIVED
 AUG 18 1969
 WILSON RESOURCES DEPT.



Mapped, edited, and published by the Geological Survey
 Control by USGS and USC&GS
 Topography by photogrammetric methods from aerial photographs taken 1963 and planetable surveys 1965
 Polyconic projection. 1927 North American datum
 10,000-foot grid based on Oregon coordinate system, north zone
 1000-meter Universal Transverse Mercator grid ticks, zone 11, shown in blue
 Fine red dashed lines indicate selected fence lines



UTM GRID AND 1965 MAGNETIC NORTH DECLINATION AT CENTER OF SHEET



CONTOUR INTERVAL 5 FEET
 DATUM IS MEAN SEA LEVEL

SCALE 1:24,000

(CRAIG MOUNTAIN 2474 III NW)

WATER RESOURCES DEPT.
 SALEM, OREGON

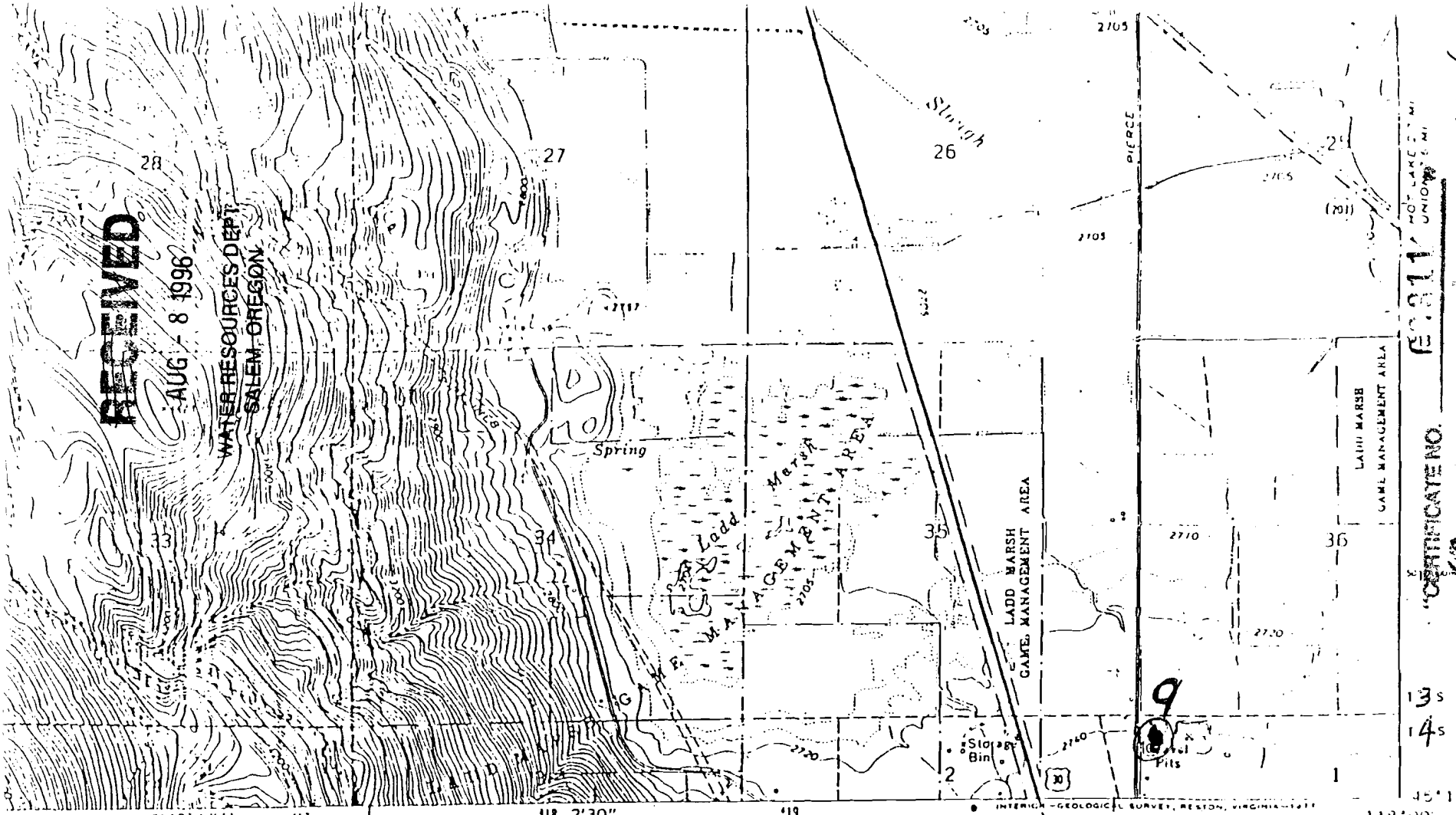
AUG - 1995

RECEIVED

RECEIVED

AUG - 8 1996

WATER RESOURCES DEPT
SALEM, OREGON



NO. LAKEVIEW UNION 6 MI

CERTIFICATE NO.

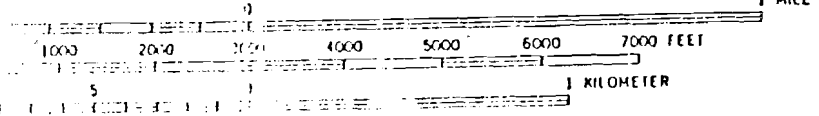
13s
14s

45° 1'

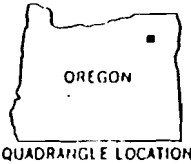
No. R-74874

No.

SCALE 1:24,000



CONTOUR INTERVAL 20 FEET
DOTTED LINES REPRESENT 5 FOOT CONTOURS
NATIONAL GEODETIC VERTICAL DATUM OF 1929



ROAD CLASSIFICATION

Heavy duty ——— Light duty ———

Medium-duty ——— Unimproved dirt ———

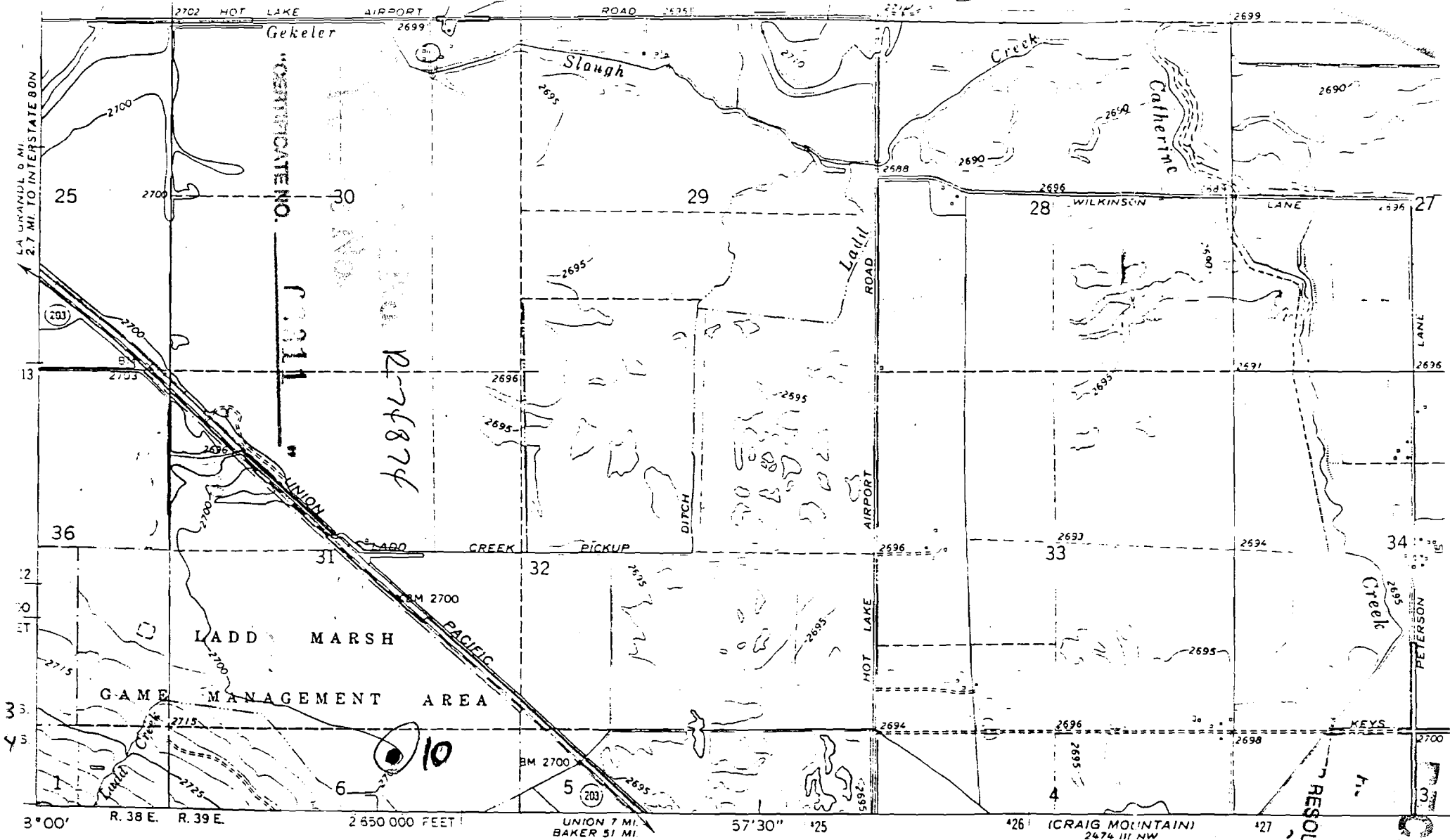
○ Interstate Route □ U.S. Route ○ State Route

LA GRANDE SE, OREG.
N4515 - W11800/7.5

1903

AMS 2374 (1-81) SERIES 0002

COMPLIES WITH NATIONAL MAP ACCURACY STANDARDS
NATIONAL SURVEY, DENVER COLORADO 80225, OR RESTON, VIRGINIA 22092
TOPOGRAPHIC MAPS AND SYMBOLS IS AVAILABLE ON REQUEST



Mapped, edited, and published by the Geological Survey

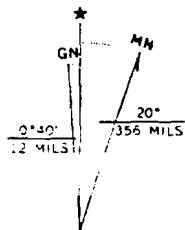
Control by USGS and USC&GS

Topography by photogrammetric methods from aerial photographs taken 1963 and planetable surveys 1965

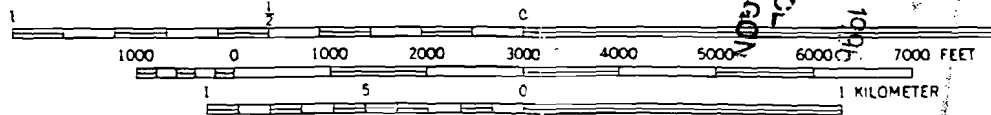
Polyconic projection. 1927 North American datum
10,000-foot grid based on Oregon coordinate system,
north zone

1000-meter Universal Transverse Mercator grid ticks,
zone 11, shown in blue

Fine red dashed lines indicate selected fence lines

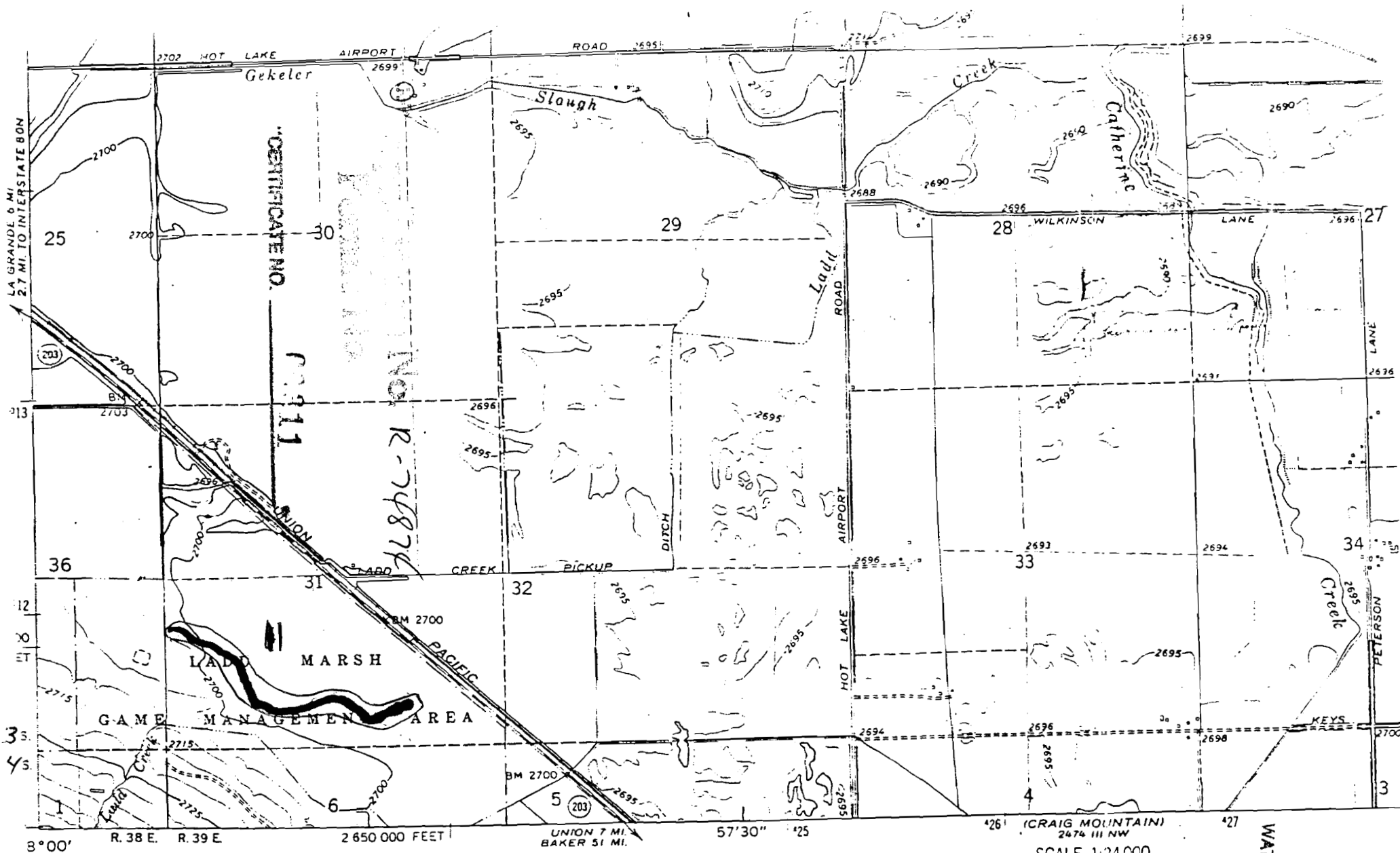


UTM GRID AND 1965 MAGNETIC NORTH DECLINATION AT CENTER OF SHEET



CONTOUR INTERVAL 5 FEET
DATUM IS MEAN SEA LEVEL

THIS MAP COMPLIES WITH NATIONAL MAP ACCURACY STANDARDS
FOR SALE BY U. S. GEOLOGICAL SURVEY, DENVER, COLORADO 80225



Mapped, edited, and published by the Geological Survey

Control by USGS and USC&GS

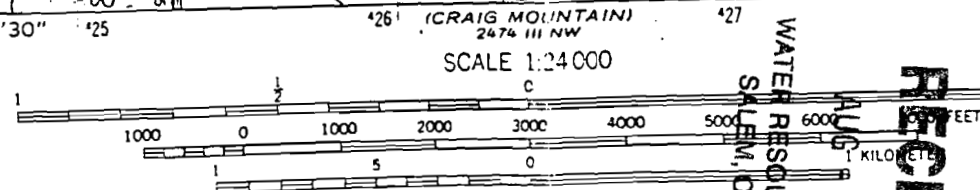
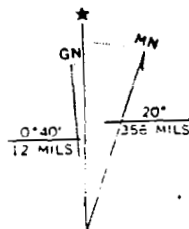
Topography by photogrammetric methods from aerial photographs taken 1963 and planetable surveys 1965

Polyconic projection. 1927 North American datum
10,000-foot grid based on Oregon coordinate system,
north zone

1000-meter Universal Transverse Mercator grid ticks,
zone 11, shown in blue

Fine red dashed lines indicate selected fence lines

UTM GRID AND 1965 MAGNETIC NORTH
DECLINATION AT CENTER OF SHEET



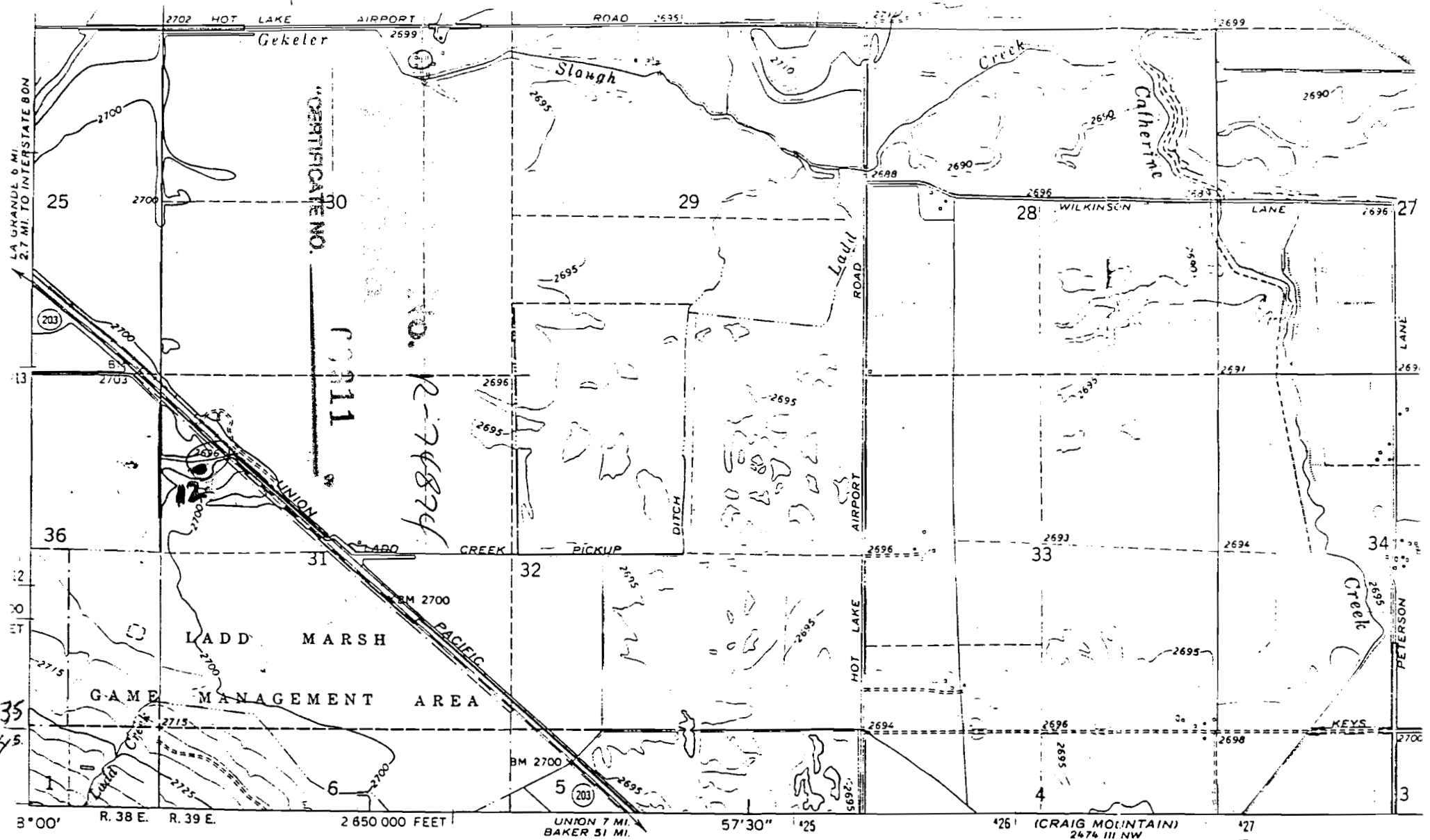
CONTOUR INTERVAL 5 FEET
DATUM IS MEAN SEA LEVEL

WATER RESOURCES DEPT.
SALEM, OREGON

AUG 8 1996

RECEIVED

THIS MAP COMPLIES WITH NATIONAL MAP ACCURACY STANDARDS



Mapped, edited, and published by the Geological Survey

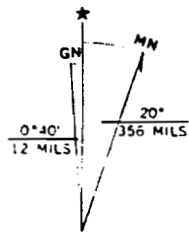
Control by USGS and USC&GS

Topography by photogrammetric methods from aerial photographs taken 1963 and planetable surveys 1965

Polyconic projection. 1927 North American datum
10,000-foot grid based on Oregon coordinate system,
north zone

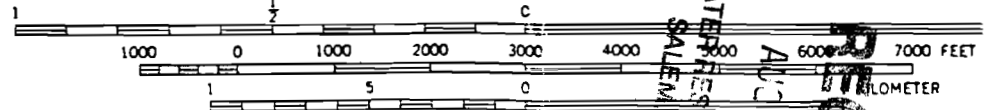
1000-meter Universal Transverse Mercator grid ticks,
zone 11, shown in blue

Finer red dashed lines indicate selected fence lines.



UTM GRID AND 1965 MAGNETIC NORTH DECLINATION AT CENTER OF SHEET

SCALE 1:24 000



CONTOUR INTERVAL 5 FEET
DATUM IS MEAN SEA LEVEL

REC'D
AUG 15 1965
WATER RESOURCES DIVISION
SALEM DISTRICT

THIS MAP COMPLIES WITH NATIONAL MAP ACCURACY STANDARDS