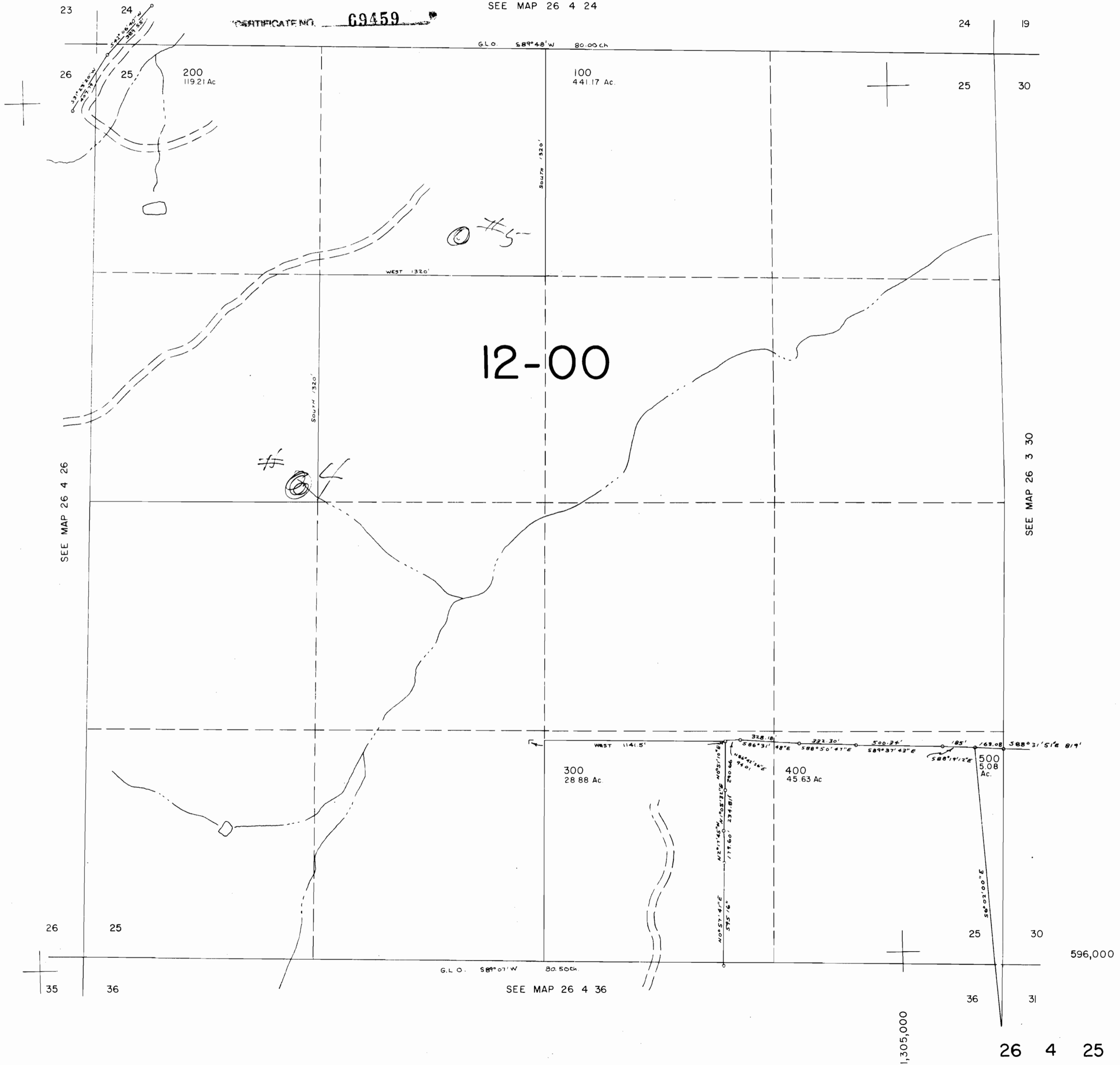


SECTION 25 T.26S. R.4W. W.M.

DOUGLAS COUNTY

1" = 400'

THIS MAP WAS PREPARED FOR ASSESSMENT PURPOSE ONLY.



R75277

1,305,000

596,000

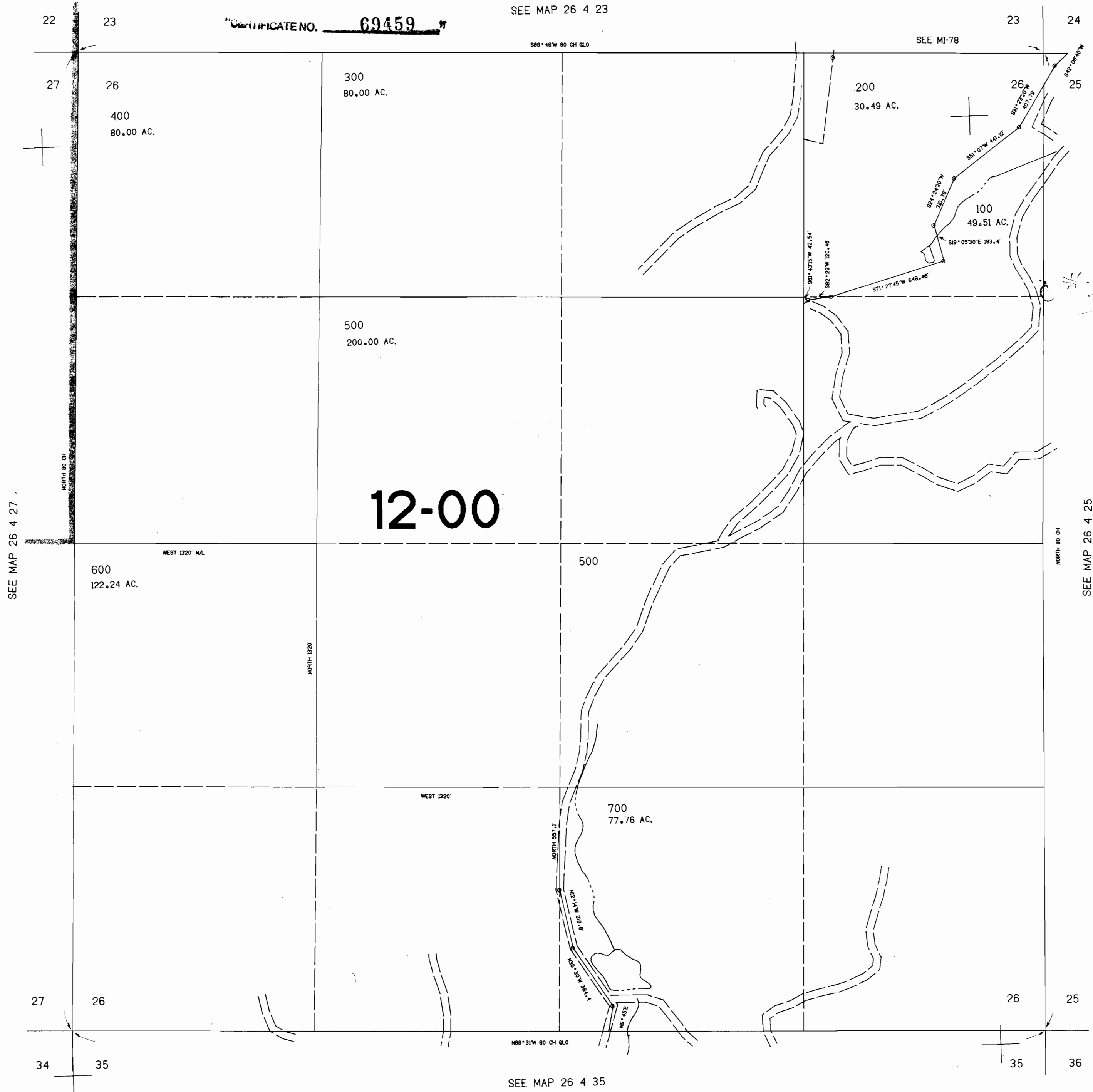
SECTION 26 T.26S. R.4W. W.M.
DOUGLAS COUNTY

THIS MAP WAS PREPARED FOR
ASSESSMENT PURPOSE ONLY.

1"=400'

CERTIFICATE NO. **69459**

SEE MAP 26 4 23



R75317

596.000

1,300,000

SECTION 24 T.26S. R.4W. W.M.
DOUGLAS COUNTY

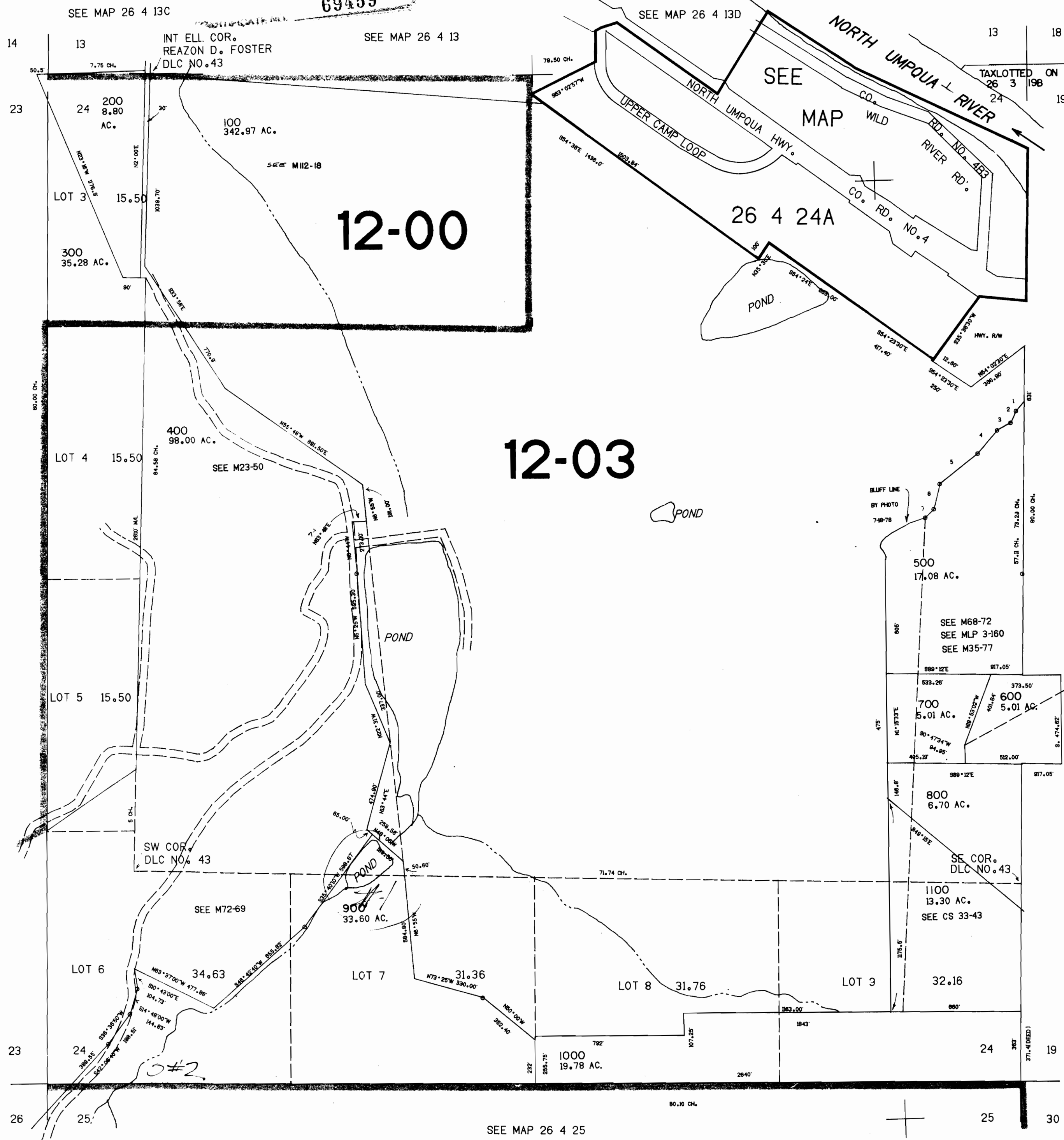
REVISED ON
9 - 3 - 93

26 4 24
& INDEX

THIS MAP WAS PREPARED FOR
ASSESSMENT PURPOSE ONLY.

1"=400'

69459



CANCELLED NO.'S

606.000

- PARCEL 200
1. 843°18'W 84.80'
 2. 831°58'W 87.50'
 3. 862°45'W 80.00'
 4. 840°25'W 184.80'
 5. 850°55'W 254.40'
 6. 822°26'W 130.50'
 7. 848°39'W 85.70'

SEE MAP 26 3 19B

26 4 24
& INDEX

R75277

1.305.000