

T. 1N. R. 44E. W.M.
WALLOWA COUNTY

THIS MAP WAS PREPARED FOR
ASSESSMENT PURPOSE ONLY.

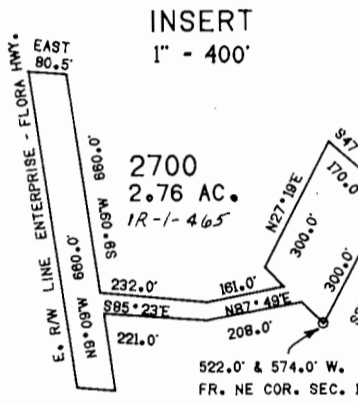
SEE MAP 2N 44 1"-2000'

CANCELLED
PARCEL NO.'S

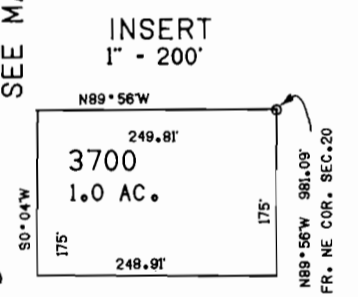
900
3000
3501
3502
5801

1994

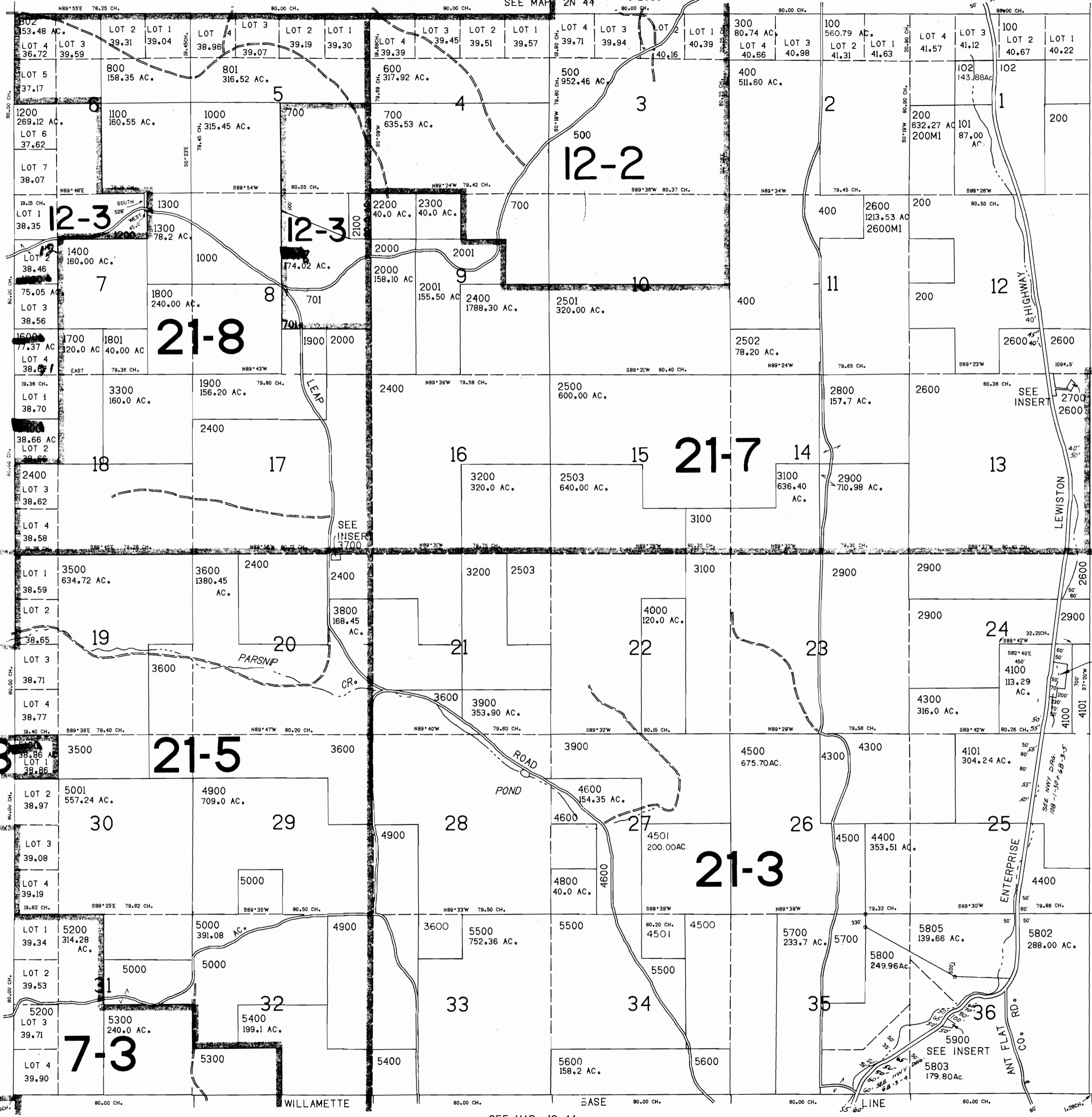
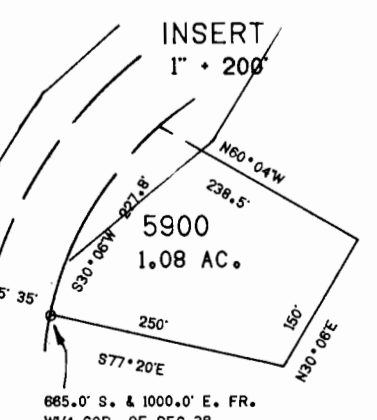
INSERT
1" - 400'



INSERT
1" - 200'



INSERT
1" - 200'



CERTIFICATE NO. 69466

R-75295

7-3

SEE MAP 1S 44

R75295

MAP WAS PREPARED FOR
ASSESSMENT PURPOSE ONLY.

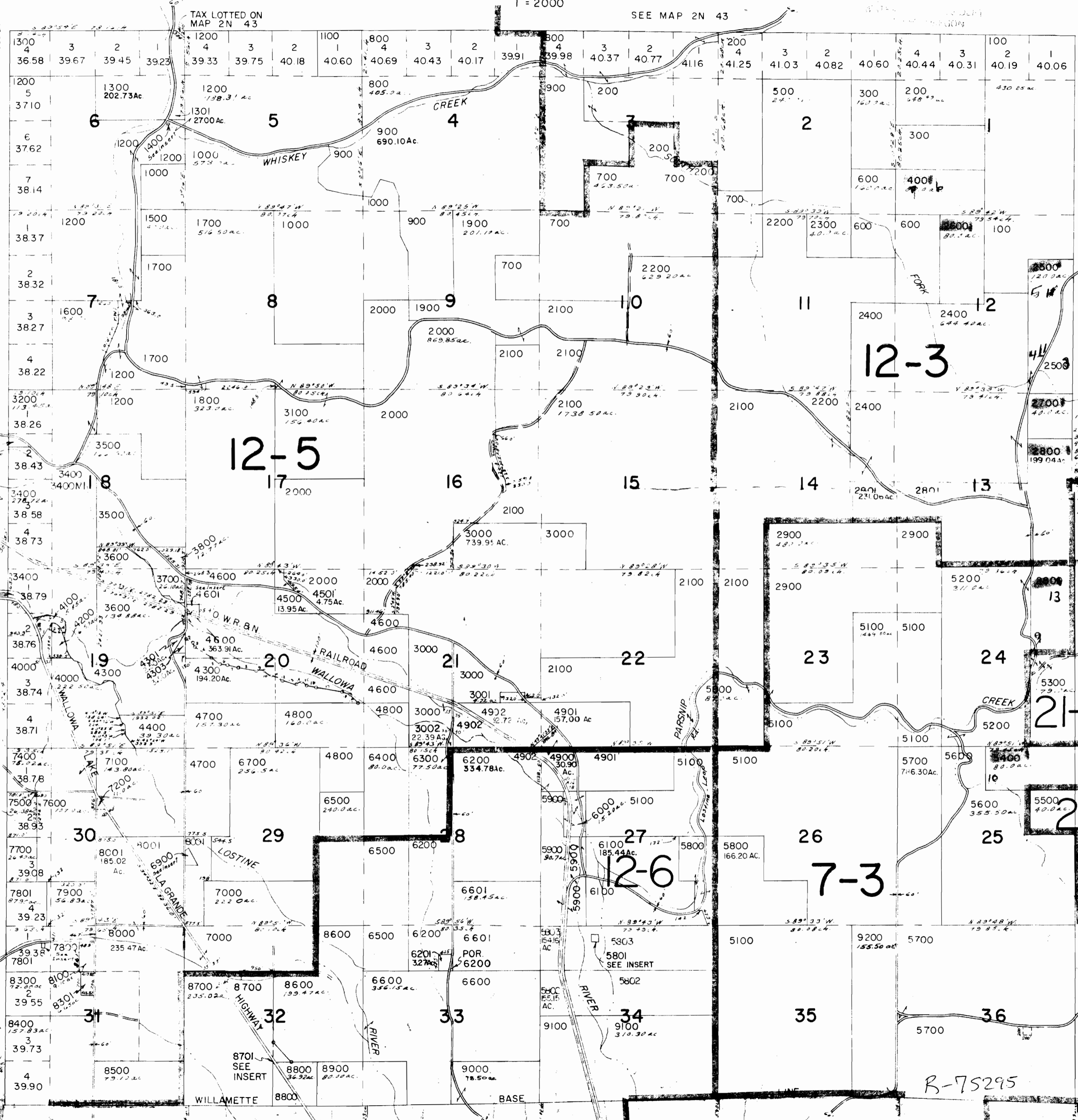
T.1N. R.43E. W.M.
WALLOWA COUNTY

IN 43

NOV 1994

1" = 2000'

SEE MAP 2N 43



INSERT
Sec 6
1" = 400'

INSERT
1" = 400'

INSERT
Sec 18
1" = 400'

TAX LOT 4100
Sec 19

INSERT
Sec 29
1" = 400'

INSERT
SEC. 29
1" = 200'

CANCELLED NO.'S
4302
4602
8601
8702
5702
5701
7300
6800
8200

CERTIFICATE NO. 69466
R 75295

PARCEL 4600
1. BARR 5215785 FROM
NW COR. SEC. 20
2. TH. 56°19'16"W 175.77'
3. TH. S 36°20'26"E 146.30'
4. TH. S 61°06'16"E 591.39'
5. TH. S 61°55'56"E 292.90'
6. TH. S 2°13'11"W 202.59'
7. TH. 57°13'24"E 350.61'
8. TH. 19°11'19"E 521.00'
9. TH. 38°17'42"E 219.08'
10. TH. 57°13'24"E 279.88'
11. TH. 57°13'24"E 279.88'
12. TH. 57°13'24"E 279.88'
13. TH. 57°13'24"E 279.88'
14. TH. 57°13'24"E 279.88'
15. TH. 57°13'24"E 279.88'
16. TH. 57°13'24"E 279.88'
17. TH. 57°13'24"E 279.88'
18. TH. 57°13'24"E 279.88'
19. TH. 57°13'24"E 279.88'

SEE MAP IN 44

INSERT
SEC 34
1" = 400'

5801
0.99Ac.

R-75295

SEE MAP IS 43

IN 43