

388° 37' 45" E

2651.24'

80.00ch.

REL NAIL
1/4 COR.

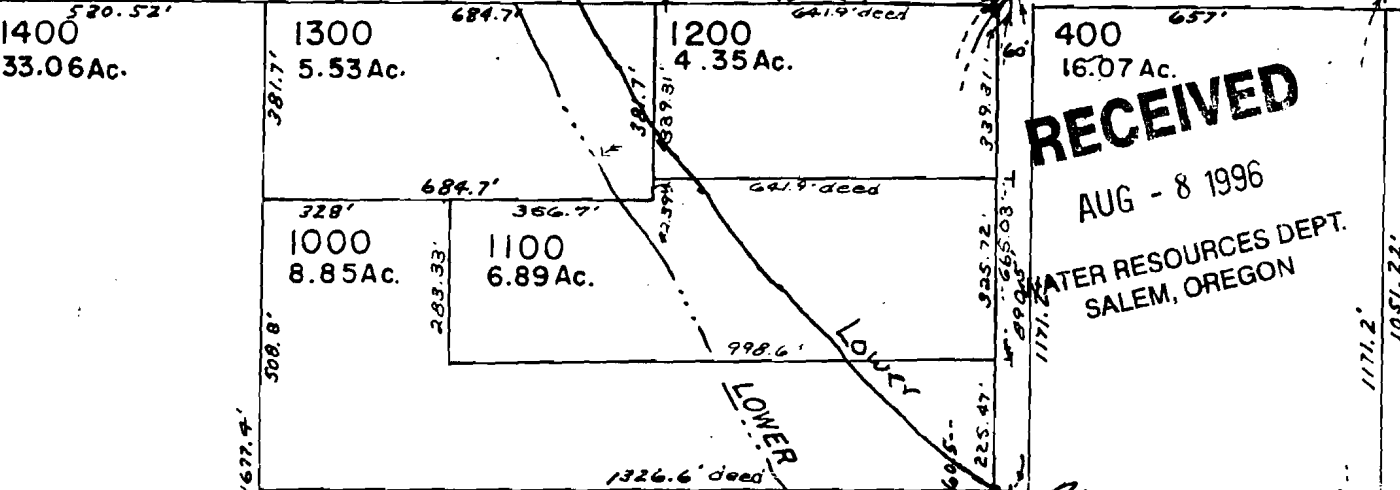
COUNTY ROAD

RECEIVED

AUG - 8 1996

WATER RESOURCES DEPT.
SALEM, OREGON

CREEK



Pond

LOUSEY

Alder Ditch
ALDER

21-9

69468

CERTIFICATE NO.

8ords = 1320'

91-19558

POR OF PARCEL I

1327.52'

2100
156.40Ac.

531

79

T1537
 $\frac{16}{13.9}$

T576

T1538

T573

$\frac{10}{21.9}$

$\frac{11}{2.1}$

$\frac{12}{20.7}$

$\frac{13}{4.2}$

$\frac{14}{30.8}$

CERTIFICATE NO.

69468

T178

DEC - 8, 1994

$\frac{15}{8.5}$

T1547

T1543

pond

T1028

T909

$\frac{1}{7.6}$

T588

$\frac{2}{6}$

T589

T920

T641

T642

$\frac{1}{15.9}$

T651

T1576