

RECEIVED

DEC 20 1994

Application No. **12-75560**  
Permit No.

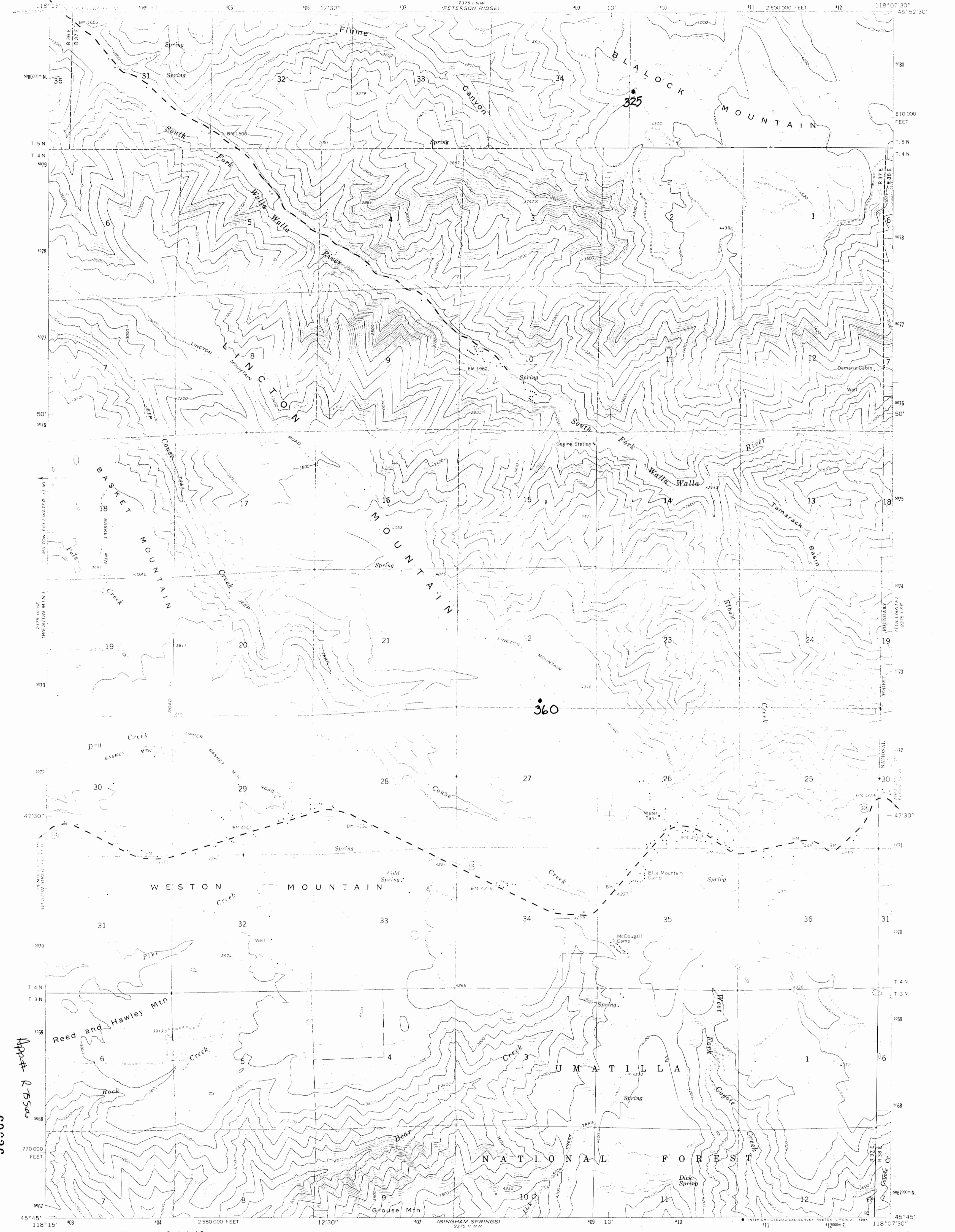
**19926**

BLALOCK MOUNTAIN QUADRANGLE  
OREGON-UMATILLA CO.  
7.5 MINUTE SERIES (TOPOGRAPHIC)

WATER RESOURCES DEPT.  
SALEM, OREGON

CERTIFICATE NO.

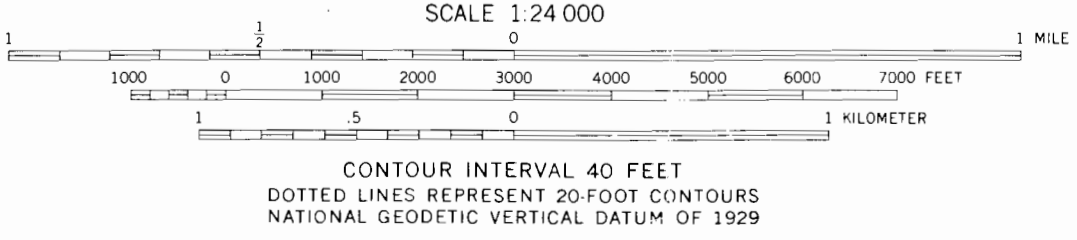
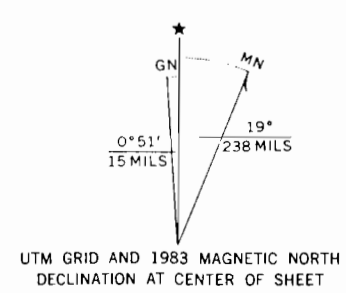
UNITED STATES  
DEPARTMENT OF THE INTERIOR  
GEOLOGICAL SURVEY



CERTIFICATE NO. **19926**

App# **RBSac**

Mapped, edited, and published by the Geological Survey  
Control by USGS and NOS/NOAA  
Topography by photogrammetric methods from aerial photographs taken 1957. Field checked 1963  
Polyconic projection. 1927 North American datum 10,000-foot grid based on Oregon coordinate system, north zone 1000-meter Universal Transverse Mercator grid ticks, zone 11, shown in blue  
To place on the predicted North American Datum 1983 move the projection lines 18 meters north and 82 meters east as shown by dashed corner ticks  
There may be private inholdings within the boundaries of the National or State reservations shown on this map  
Fine red dashed lines indicate selected fence lines  
Certain land lines are omitted because of insufficient data



ROAD CLASSIFICATION

Medium-duty	Light-duty
Unimproved dirt	State Route

THIS MAP COMPLIES WITH NATIONAL MAP ACCURACY STANDARDS  
FOR SALE BY U. S. GEOLOGICAL SURVEY, DENVER, COLORADO 80225, OR RESTON, VIRGINIA 22092  
A FOLDER DESCRIBING TOPOGRAPHIC MAPS AND SYMBOLS IS AVAILABLE ON REQUEST

Revisions shown in purple and woodland compiled from data  
Photorevised 1983  
DMA 2375 1 SW-SERIES V892

**MASTER COPY**

Please DO NOT remove from office

BLALOCK MOUNTAIN, OREG. 5