

RECEIVED

DEC 20 1994

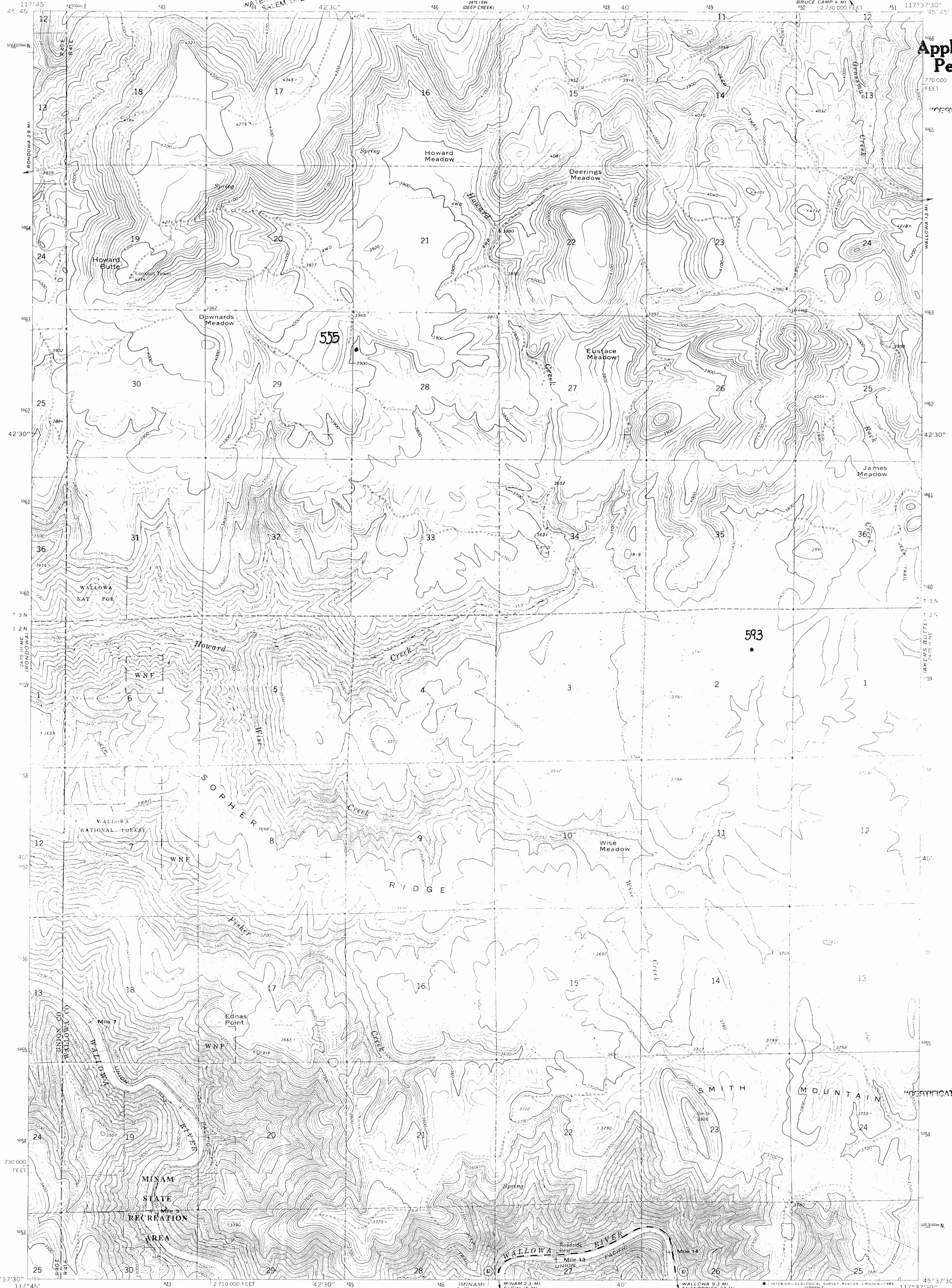
WATER RESOURCES DEPT.
SALEM, OREGON

UNITED STATES
DEPARTMENT OF THE INTERIOR
GEOLOGICAL SURVEY

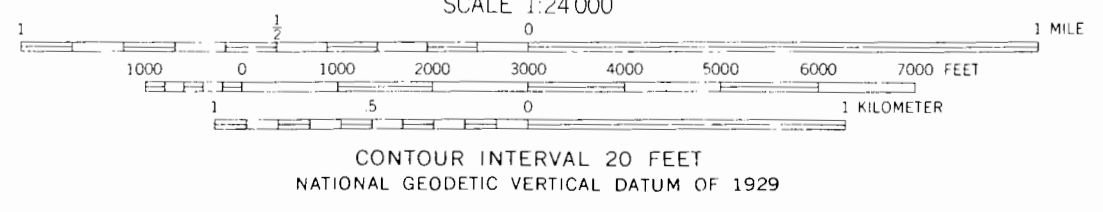
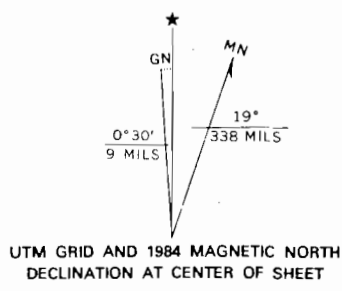
HOWARD BUTTE QUADRANGLE
OREGON
7.5 MINUTE SERIES (TOPOGRAPHIC)

Application No. R-75567
Permit No.

CERTIFICATE NO. 00627



Mapped, edited, and published by the Geological Survey
Control by USGS and NOS/NOAA
Topography by photogrammetric methods from aerial photographs taken 1959. Field checked 1964
Polyconic projection. 1927 North American datum
10,000-foot grid based on Oregon coordinate system, north zone
1000-meter Universal Transverse Mercator grid ticks, zone 11, shown in blue
To place on the predicted North American Datum 1983 move the projection lines 17 meters north and 80 meters east as shown by dashed corner ticks
There may be private inholdings within the boundaries of the National or State reservations shown on this map



ROAD CLASSIFICATION
Medium-duty — Light-duty
Unimproved dirt
State Route
IH19
HOWARD BUTTE, OREG.

THIS MAP COMPLIES WITH NATIONAL MAP ACCURACY STANDARDS
FOR SALE BY U. S. GEOLOGICAL SURVEY, DENVER, COLORADO 80225, OR RESTON, VIRGINIA 22092
Revision shown in purple and woodland compiled from
A FOLDER DESCRIBING TOPOGRAPHIC MAPS AND SYMBOLS IS AVAILABLE ON REQUEST
1964
PHOTOREVISED 1984
DMA 2475 II NW—SERIES V892

Please DO NOT remove from office

App# R75567

CERTIFICATE NO. 00627