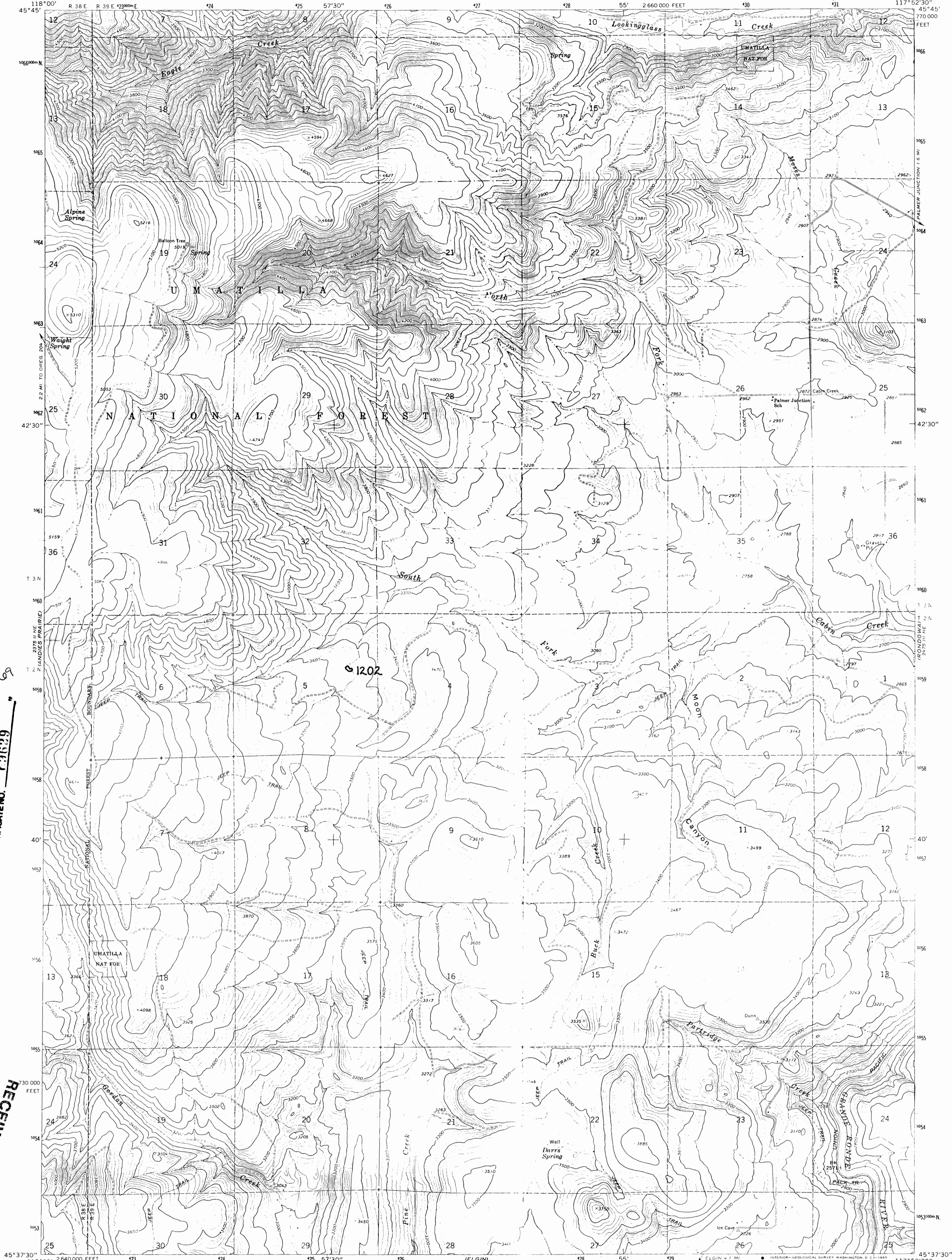


Application No. R-15569  
Permit No. 4

(B)

UNITED STATES  
DEPARTMENT OF THE INTERIOR  
GEOLOGICAL SURVEY

PARTRIDGE CREEK QUADRANGLE  
OREGON—UNION CO.  
7.5 MINUTE SERIES (TOPOGRAPHIC)

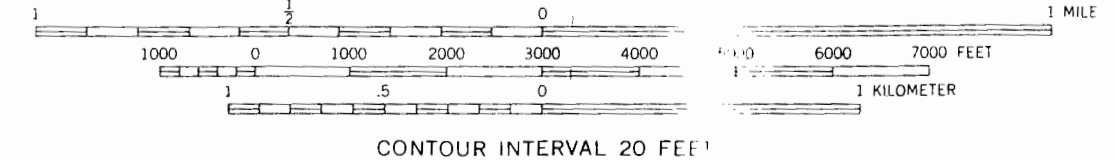
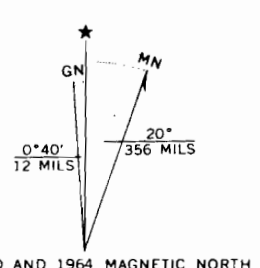


APP# R-15569

CERTIFICATE NO. 0929

RECEIVED  
DEC 20 1984  
WATER RESOURCES DEPT.  
SALEM, OREGON

Mapped, edited, and published by the Geological Survey  
Control by USGS and USC&GS  
Topography by photogrammetric methods from aerial photographs taken 1959. Field checked 1964  
Polyconic projection. 1927 North American datum, 10,000-foot grid based on Oregon coordinate system, north zone  
1000-meter Universal Transverse Mercator grid ticks, zone 11, shown in blue  
Where omitted, land lines have not been established  
Fine red dashed lines indicate selected fence lines



CONTOUR INTERVAL 20 FEET  
CONTOUR INTERVAL ON RIVER SURFACE 10 FEET  
DATUM IS MEAN SEA LEVEL

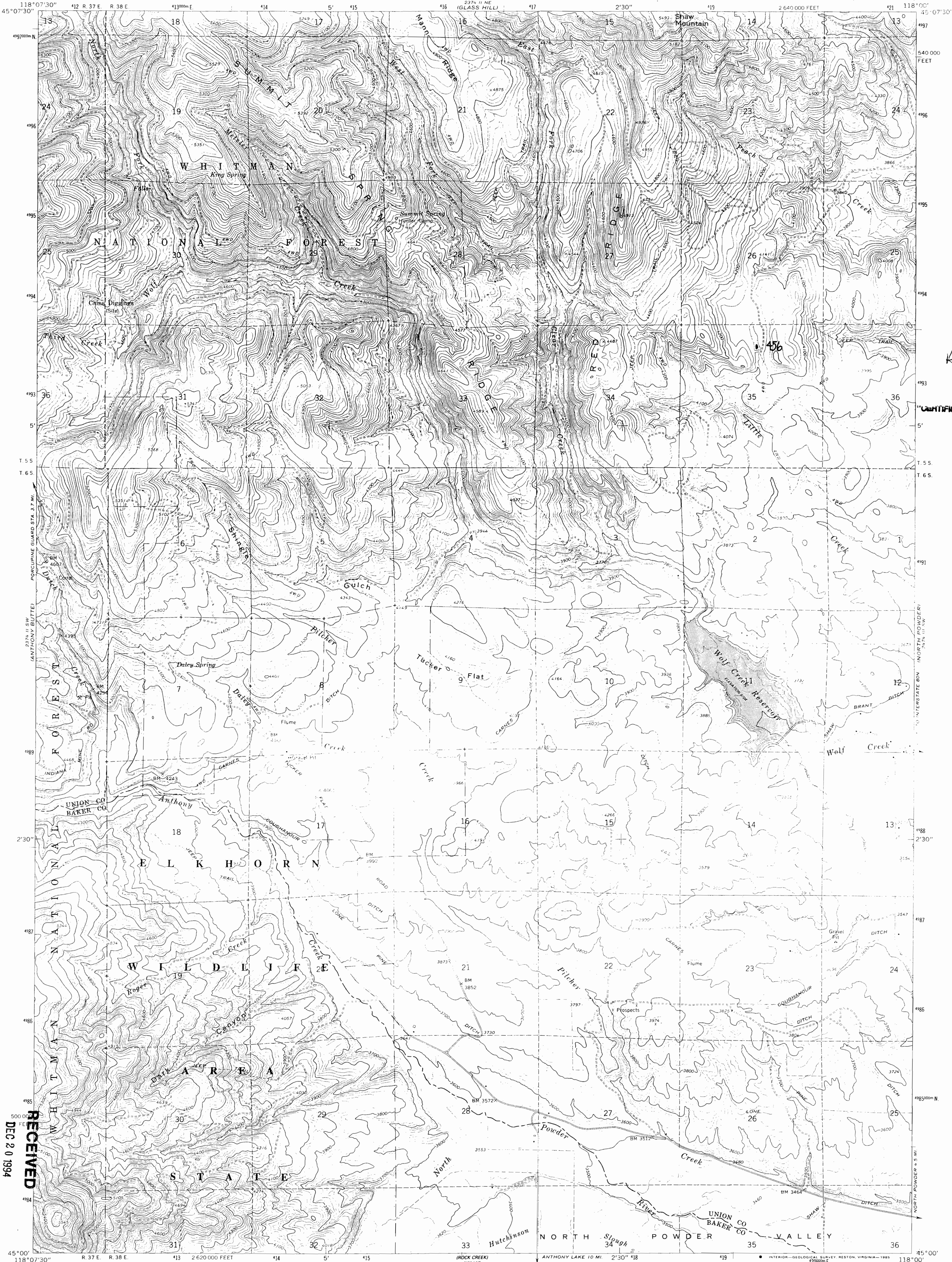


ROAD CLASSIFICATION  
Light-duty ——— Unimproved dirt

PARTRIDGE CREEK, OREG.  
N4537.5—W11752.5/7.5

THIS MAP COMPLIES WITH NATIONAL MAP ACCURACY STANDARDS  
FOR SALE BY U.S. GEOLOGICAL SURVEY, DENVER, COLORADO 80225, OR WASHINGTON, D.C. 20242  
A FOLDER DESCRIBING TOPOGRAPHIC MAPS AND SYMBOLS IS AVAILABLE ON REQUEST

1964  
AMS 2475 III NW—SERIES V892



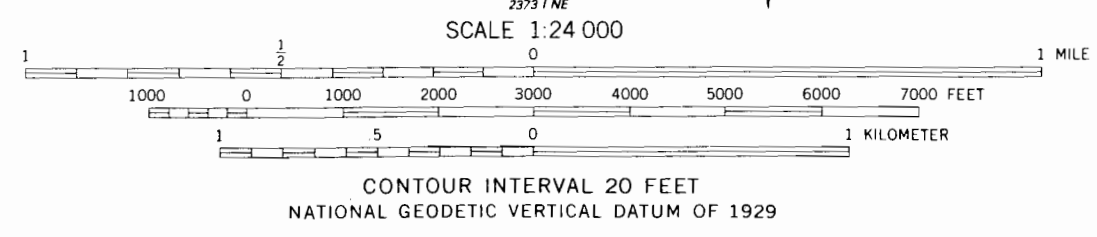
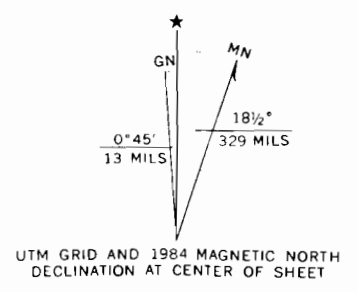
App #  
R 15509

CERTIFICATE NO. **69629**

RECEIVED  
DEC 20 1994  
WATER RESOURCES DEPT.  
SALEM, OREGON

Mapped, edited, and published by the Geological Survey

Control by USGS and NOS/NOAA  
Topography by photogrammetric methods from aerial photographs taken 1960. Field checked 1965  
Polyconic projection. 1927 North American datum 10,000-foot grid based on Oregon coordinate system, north zone  
1000-meter Universal Transverse Mercator grid ticks, zone 11, shown in blue  
To place on the predicted North American Datum 1983 move the projection lines 17 meters north and 81 meters east as shown by dashed corner ticks  
Fine red dashed lines indicate selected fence lines  
There may be private inholdings within the boundaries of the National or State reservations shown on this map



ROAD CLASSIFICATION  
Light-duty ——— Unimproved dirt - - - - -  
JG32

THIS MAP COMPLIES WITH NATIONAL MAP ACCURACY STANDARDS  
FOR SALE BY U. S. GEOLOGICAL SURVEY, DENVER, COLORADO 80225, OR RESTON, VIRGINIA 22092  
A FOLDER DESCRIBING TOPOGRAPHIC MAPS AND SYMBOLS IS AVAILABLE ON REQUEST

Revision shown in purple and woodland compiled from aerial photographs taken 1981 and other sources  
Partial field check by U.S. Forest Service. Map edited 1984

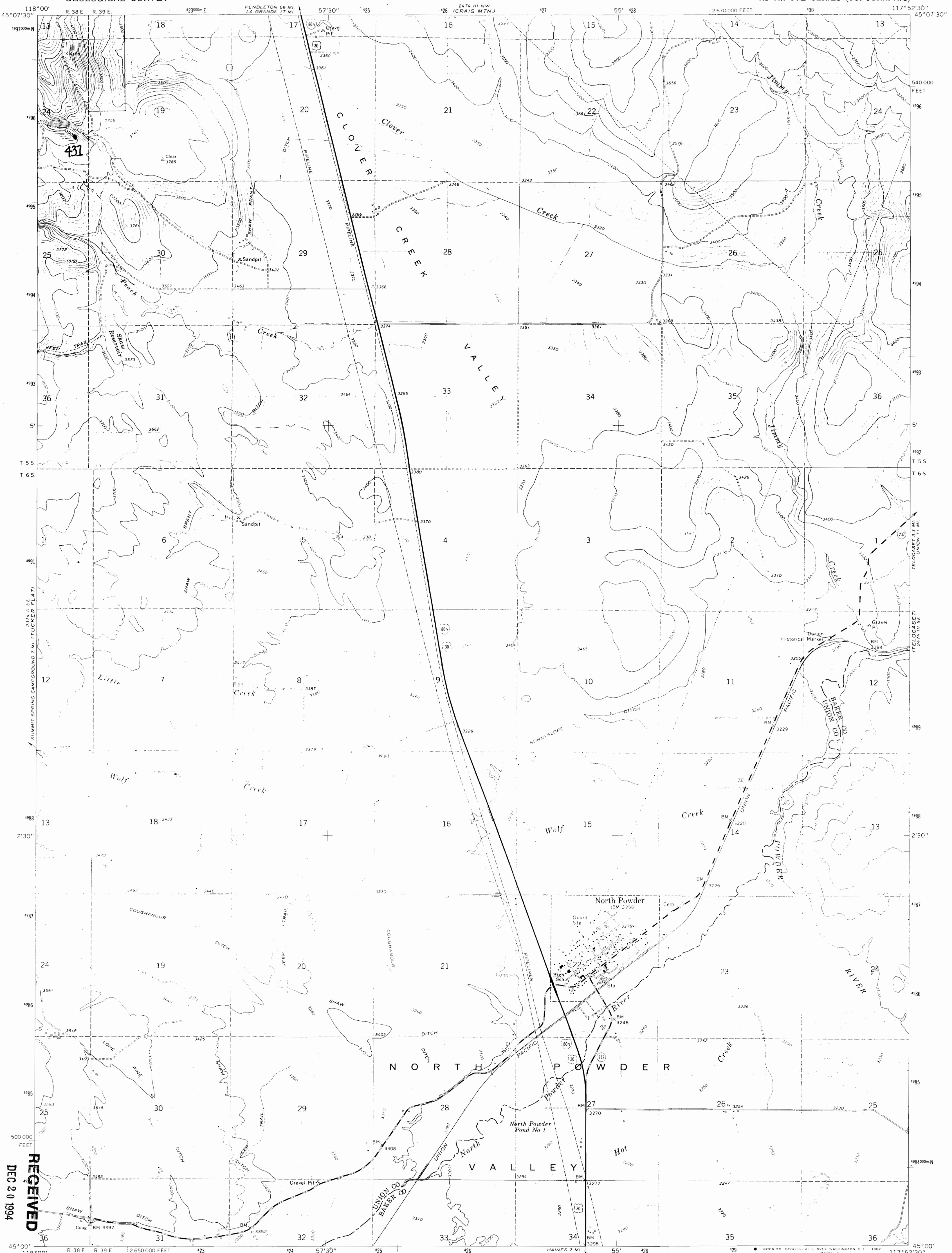
TUCKER FLAT, OREG. 53  
45118-A1-TF-024  
1965  
PHOTOREVISED 1984  
DMA 2374 II SE—SERIES V892

APP# R 75569

UNITED STATES  
DEPARTMENT OF THE INTERIOR  
GEOLOGICAL SURVEY

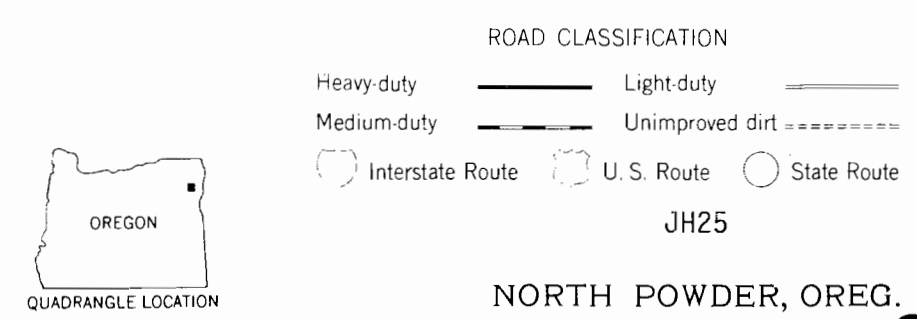
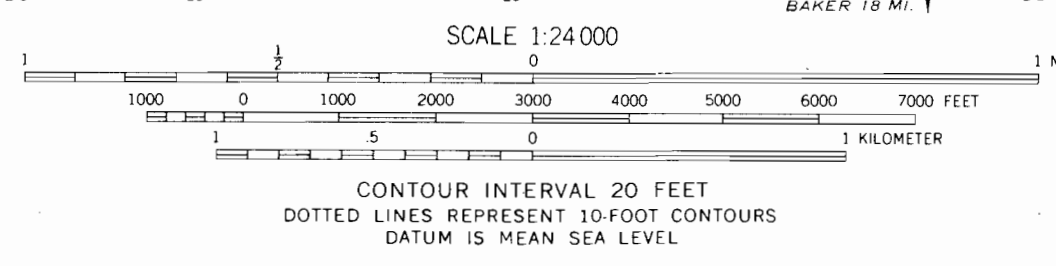
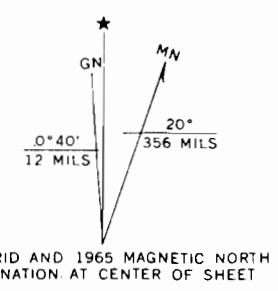
CERTIFICATE NO. 69629

NORTH POWDER QUADRANGLE  
OREGON  
7.5 MINUTE SERIES (TOPOGRAPHIC)



RECEIVED  
DEC 20 1994  
WATER RESOURCES DEPT.  
SALEM, OREGON

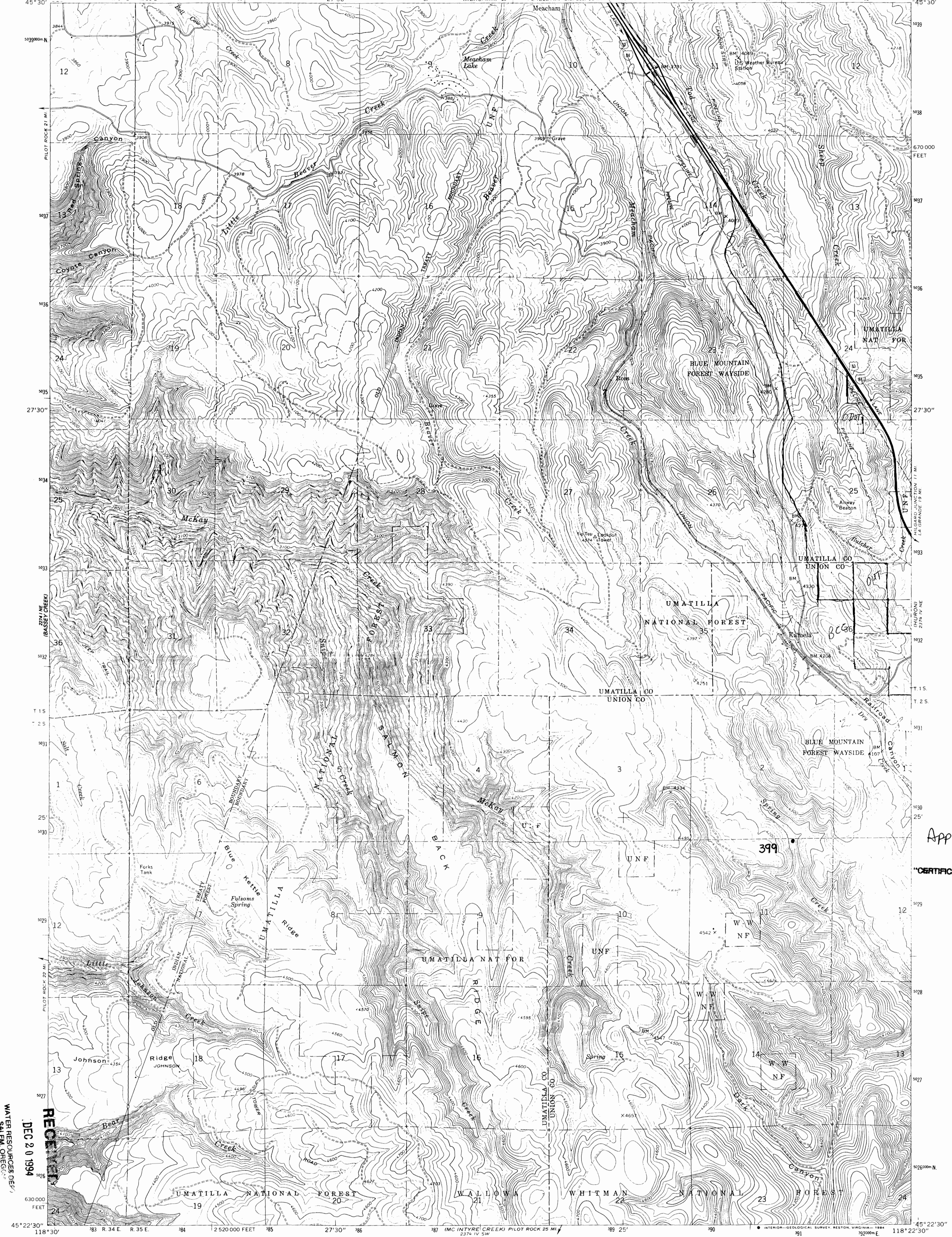
Mapped, edited, and published by the Geological Survey  
Control by USGS and USC&GS  
Topography by photogrammetric methods from aerial  
photographs taken 1963. Field checked 1965  
Polyconic projection. 1927 North American datum  
10,000-foot grid based on Oregon coordinate system,  
north zone  
1000-meter Universal Transverse Mercator grid ticks,  
zone 11, shown in blue  
Fine red dashed lines indicate selected fence lines



THIS MAP COMPLIES WITH NATIONAL MAP ACCURACY STANDARDS  
FOR SALE BY U.S. GEOLOGICAL SURVEY, DENVER, COLORADO 80225, OR WASHINGTON, D.C. 20242  
A FOLDER DESCRIBING TOPOGRAPHIC MAPS AND SYMBOLS IS AVAILABLE ON REQUEST

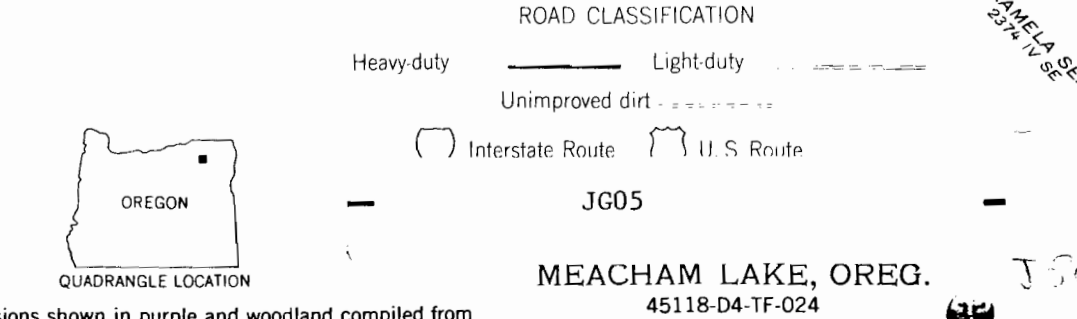
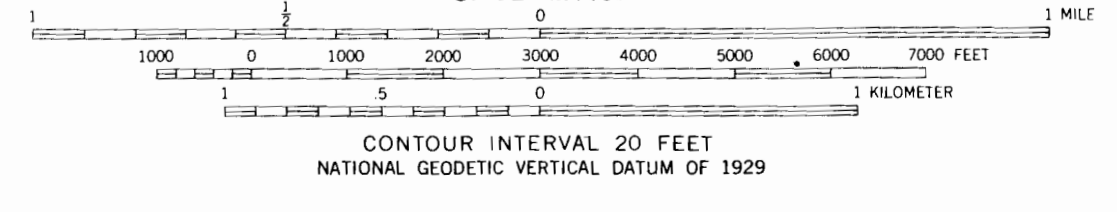
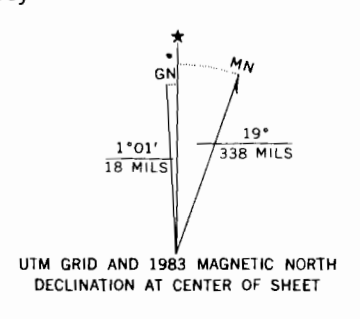
**MASTER COPY**  
Please DO NOT remove from office

NORTH POWDER, OREG.  
N4500—W11752.5/7.5  
1965  
AMS 2474 III SW—SERIES V892



App. # R 75509  
 CERTIFICATE NO. 00629

RECEIVED  
 DEC 20 1994  
 WATER RESOURCES DIV.  
 SALEM, OREGON

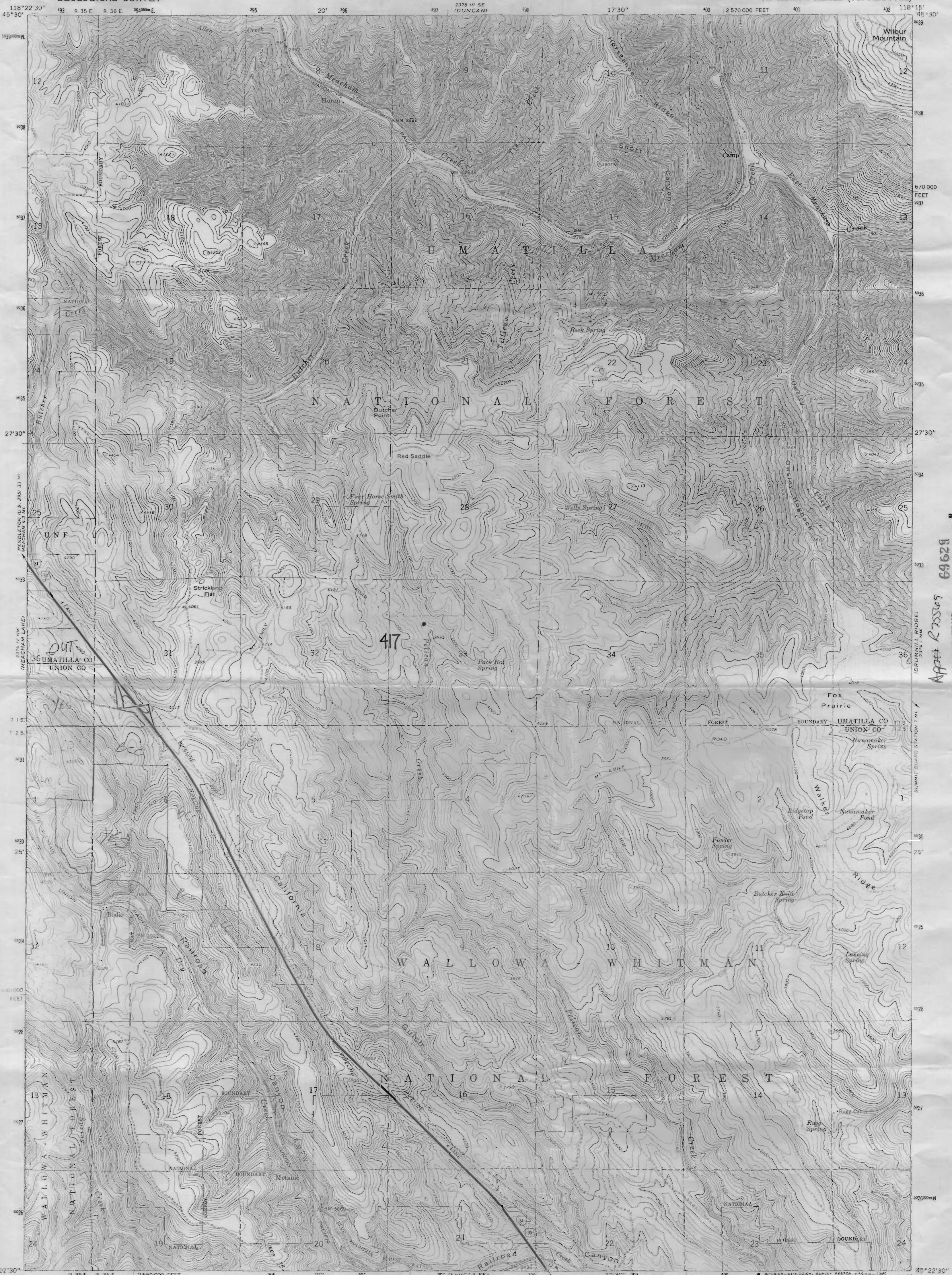


Mapped, edited, and published by the Geological Survey  
 Control by USGS and NOS/NOAA  
 Topography by photogrammetric methods from aerial photographs taken 1957. Field checked 1963  
 Polyconic projection. 1927 North American Datum  
 10,000-foot grid based on Oregon coordinate system, north zone  
 1000-meter Universal Transverse Mercator grid ticks, zone 11, shown in blue  
 To place on the predicted North American Datum 1983 move the projection lines 18 meters north and 82 meters east as shown by dashed corner ticks  
 There may be private inholdings within the boundaries of the National or State reservations shown on this map

THIS MAP COMPLIES WITH NATIONAL MAP ACCURACY STANDARDS  
 FOR SALE BY U. S. GEOLOGICAL SURVEY, DENVER, COLORADO 80225, OR RESTON, VIRGINIA 22092  
 A FOLDER DESCRIBING TOPOGRAPHIC MAPS AND SYMBOLS IS AVAILABLE ON REQUEST

Revisions shown in purple and woodland compiled from aerial photographs taken 1981 and other source data  
 Partial field check by U. S. Forest Service. Map edited 1983  
 1963  
 PHOTOREVISED 1983  
 DMA 2374 IV NW—SERIES V892

MEACHAM LAKE, OREG.  
 45118-D4-TF-024  
 J 505



228 1/2 NW  
THURBERG MOUNTAIN  
 App# R 25505  
 69628  
 CERTIFICATE NO.

Mapped, edited, and published by the Geological Survey  
 Control by USGS and NOS/NOAA  
 Topography by photogrammetric methods from aerial photographs taken 1967. Field checked 1964  
 Projection: 1927 North American Datum  
 3000-foot grid based on Oregon coordinate system, with zone 12  
 1000-meter Universal Transverse Mercator grid ticks, zone 12, shown in blue  
 To place on the projected North American Datum 1983 move the projection lines 18 meters north and 82 meters east as shown by dashed corner ticks  
 There may be private inholdings within the boundaries of the National or State reservations shown on this map

5 SCALE 1:24 000  
 1 MILE  
 1 KILOMETER

CONTOUR INTERVAL 20 FEET  
 NATIONAL GEODETIC VERTICAL DATUM OF 1929

ROAD CLASSIFICATION  
 Heavy-duty Light-duty  
 Unimproved dirt  
 Interstate Route U.S. Route

UTM GRID AND 1983 MAGNETIC NORTH DECLINATION AT CENTER OF SHEET

THIS MAP COMPLIES WITH NATIONAL MAP ACCURACY STANDARDS  
 FOR SALE BY U. S. GEOLOGICAL SURVEY, DENVER, COLORADO 80225, OR RESTON, VIRGINIA 22092  
 A FOLDER DESCRIBING TOPOGRAPHIC MAPS AND SYMBOLS IS AVAILABLE ON REQUEST

Revisions shown in purple and woodland compiled from aerial photographs taken 1981 and other source data  
 Partial field check by U. S. Forest Service. Map edited 1983

HURON, OREG. 24  
 45118-D3-TF-024  
 1964  
 PHOTOREVISED 1983  
 DMA 2374 IV NE-SERIES V892

JG06