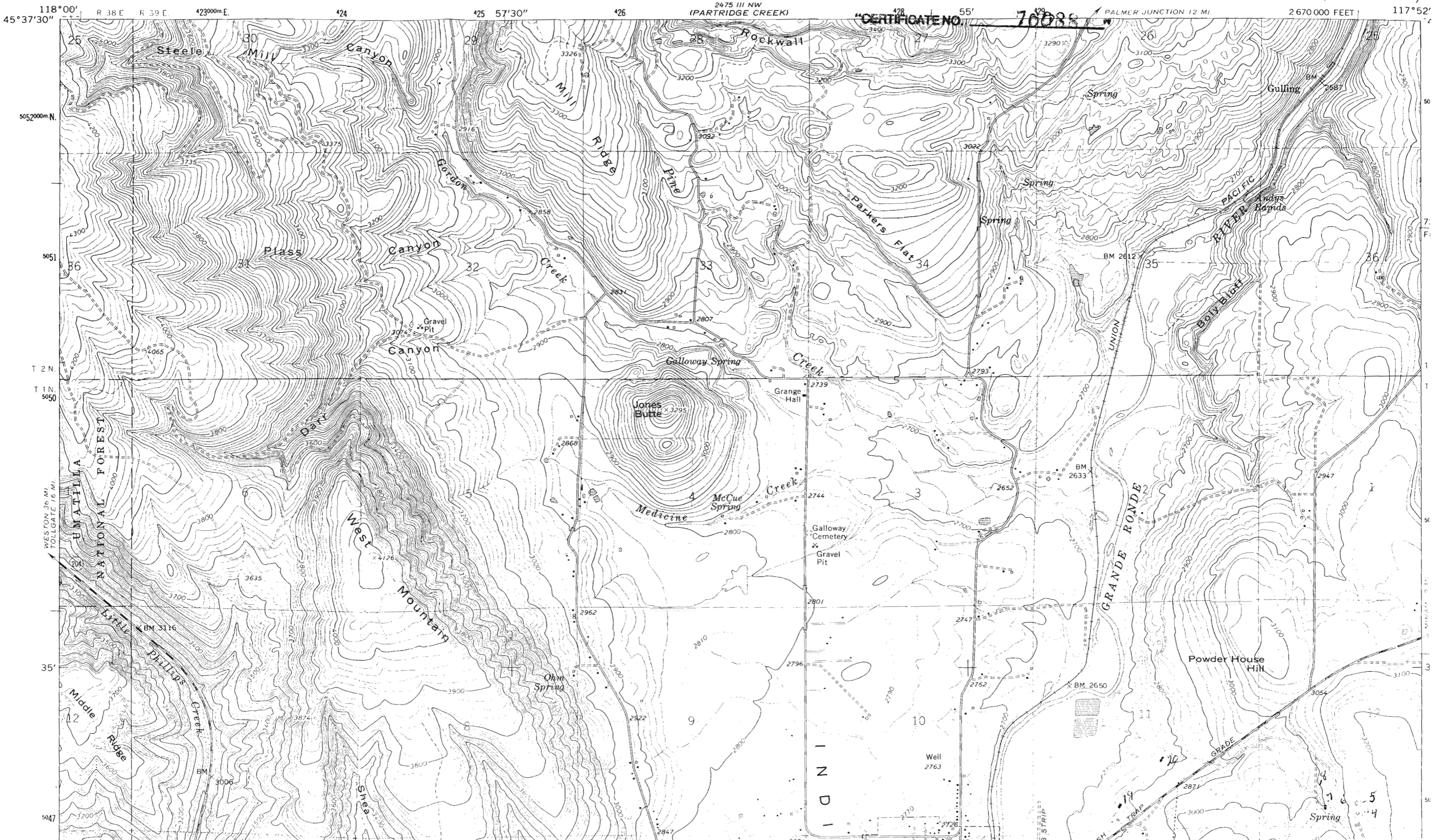


7.5 MINUTE STRIP (NE PAIR)

UNITED STATES  
DEPARTMENT OF THE INTERIOR  
GEOLOGICAL SURVEY

Application No. R-76102  
Permit No.

ELGIN QUADRANGLE  
OREGON-UNION CO.  
7.5 MINUTE SERIES (TOPOGRAPHIC)



118°00' 45°37'30" R 38 E R 39 E 423000m.E. 424 425 57'30" 426 2475 III NW (PARTRIDGE CREEK) 428 55' 429 70088 PALMER JUNCTION 12 MI. 2670000 FEET 117°52'

5052000m.N.

5051

T 2 N

T 1 N

5050

WESTON 36 MI. TOLLGATE 16 MI.

35'

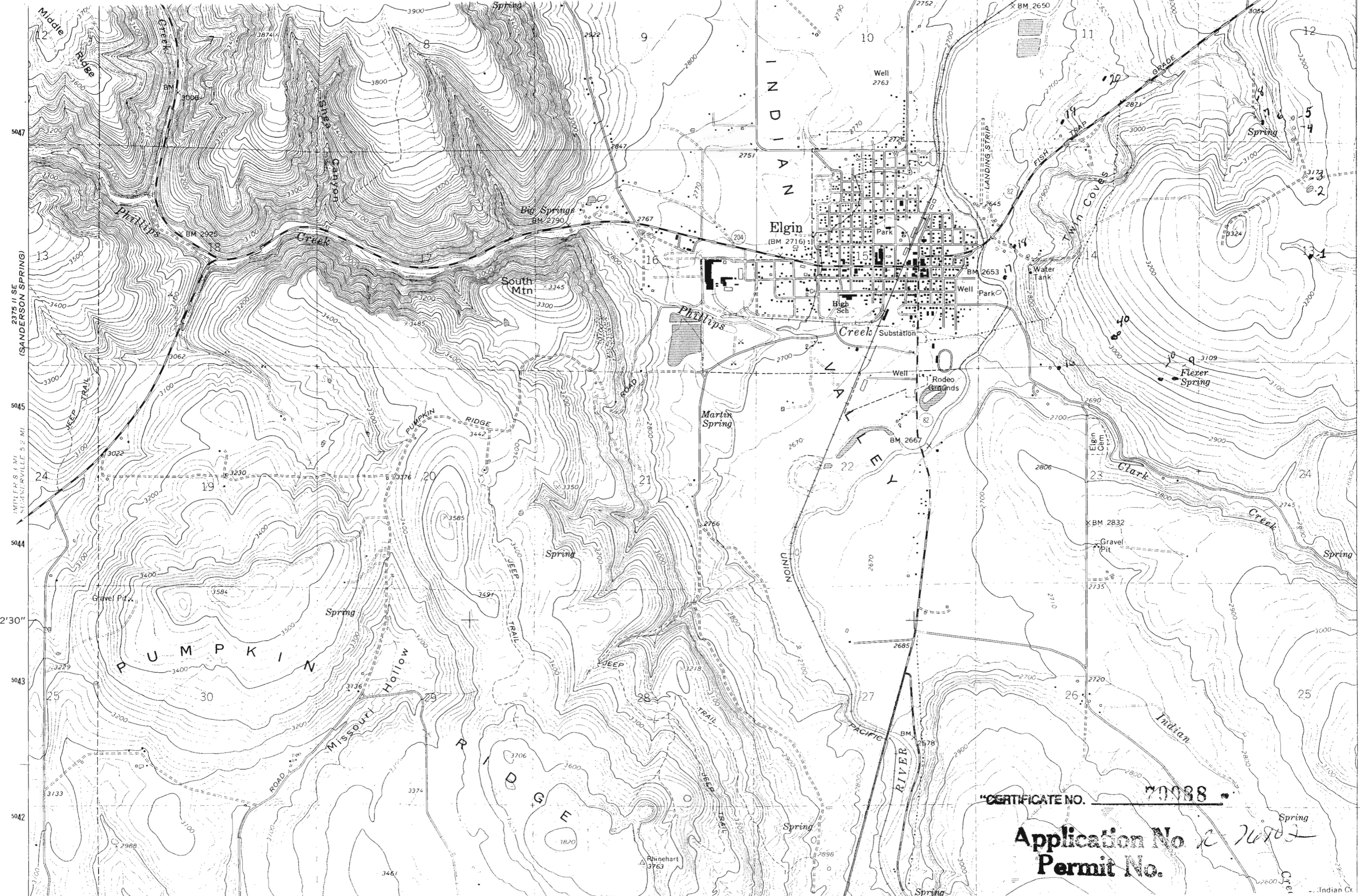
5047

INDIAN

56

3

56



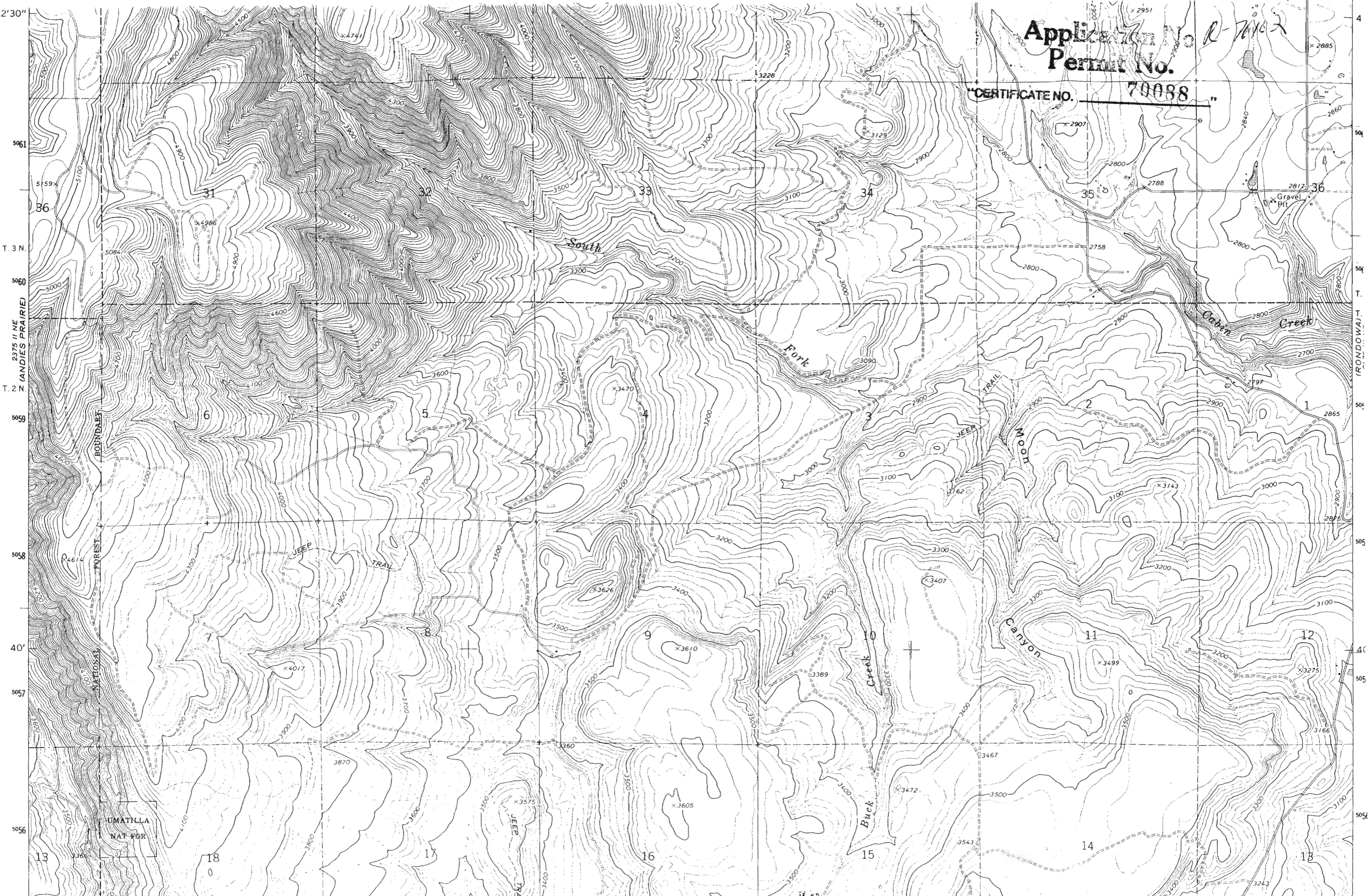
CERTIFICATE NO. 70088

Application No. 2-76702  
Permit No.

2' 30"  
5061  
T. 3 N.  
5060  
2375 II NE (ANDIES PRAIRIE)  
T. 2 N.  
5059  
5058  
40'  
5057  
5056

Application No. R-7402  
Permit No.

CERTIFICATE NO. 70088



4  
504  
T.  
504  
T.  
504  
T.  
505  
505  
40'  
505  
5056

BOUNDARY  
FOREST  
NATIONAL

UMATILLA  
NAT FOR

South

Fork

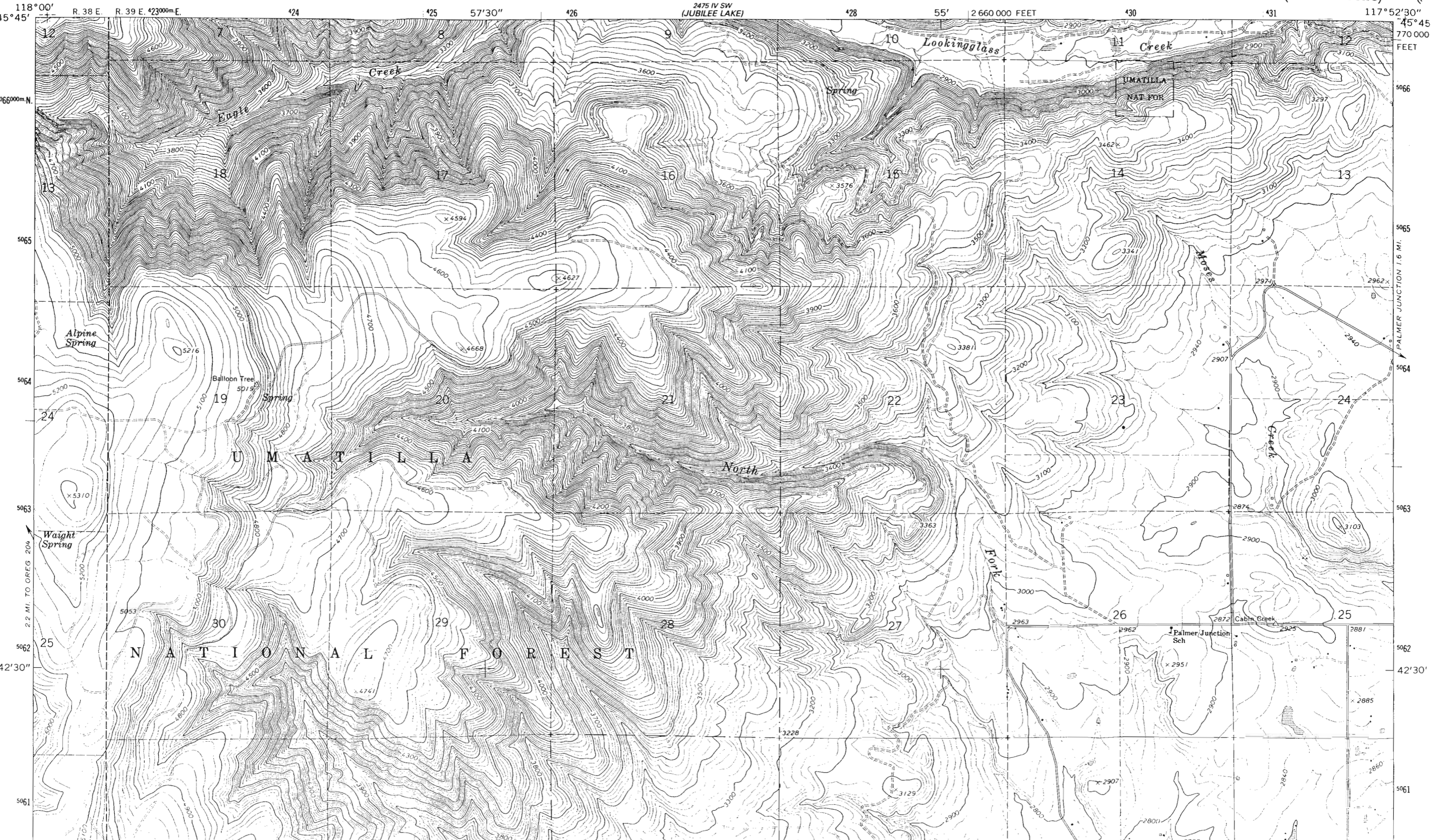
MOON CANYON TRAIL

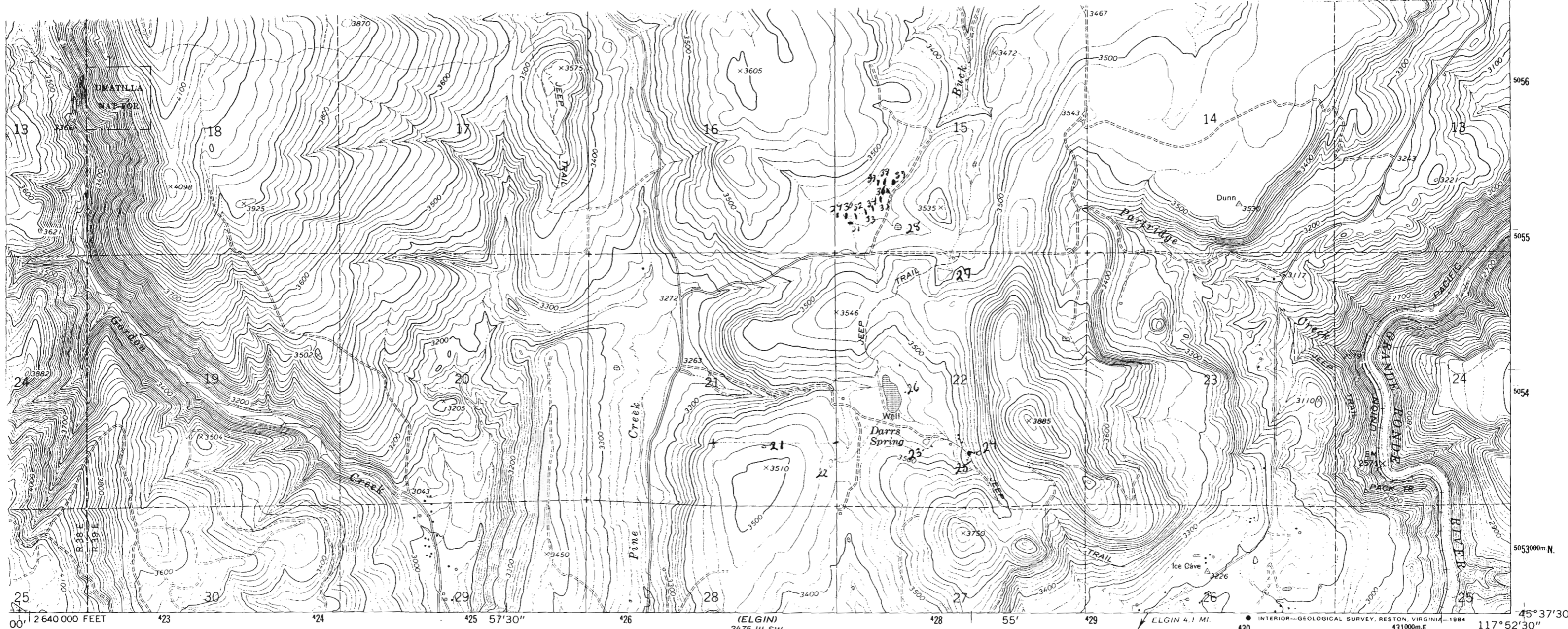
Canyon

Cabin Creek

Buck Creek

TRONDAWAY





Mapped, edited, and published by the Geological Survey

Control by USGS and NOS/NOAA

Topography by photogrammetric methods from aerial photographs taken 1959. Field checked 1964

Polyconic projection. 1927 North American Datum. 10,000-foot grid based on Oregon coordinate system, north zone. 1000-meter Universal Transverse Mercator grid ticks, zone 11, shown in blue

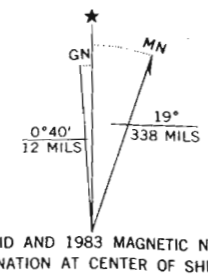
Where omitted, land lines have not been established

Fine red dashed lines indicate selected fence lines

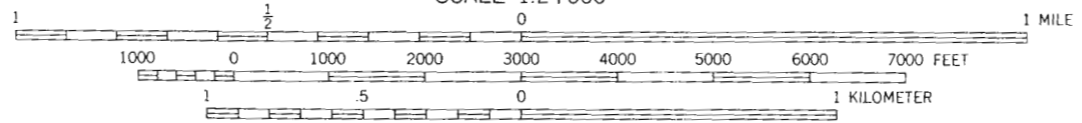
To place on the predicted North American Datum 1983

Move the projection lines 17 meters north and 11 meters east as shown by dashed corner ticks

There may be private inholdings within the boundaries of the National or State reservations shown on this map



UTM GRID AND 1983 MAGNETIC NORTH DECLINATION AT CENTER OF SHEET



SCALE 1:24 000  
CONTOUR INTERVAL 20 FEET  
CONTOUR INTERVAL ON RIVER SURFACE 10 FEET  
NATIONAL GEODETIC VERTICAL DATUM OF 1929

THIS MAP COMPLIES WITH NATIONAL MAP ACCURACY STANDARDS  
FOR SALE BY U. S. GEOLOGICAL SURVEY, DENVER, COLORADO 80225, OR RESTON, VIRGINIA 22092  
A FOLDER DESCRIBING TOPOGRAPHIC MAPS AND SYMBOLS IS AVAILABLE ON REQUEST



QUADRANGLE LOCATION

ROAD CLASSIFICATION  
Light-duty ..... Unimproved dirt .....

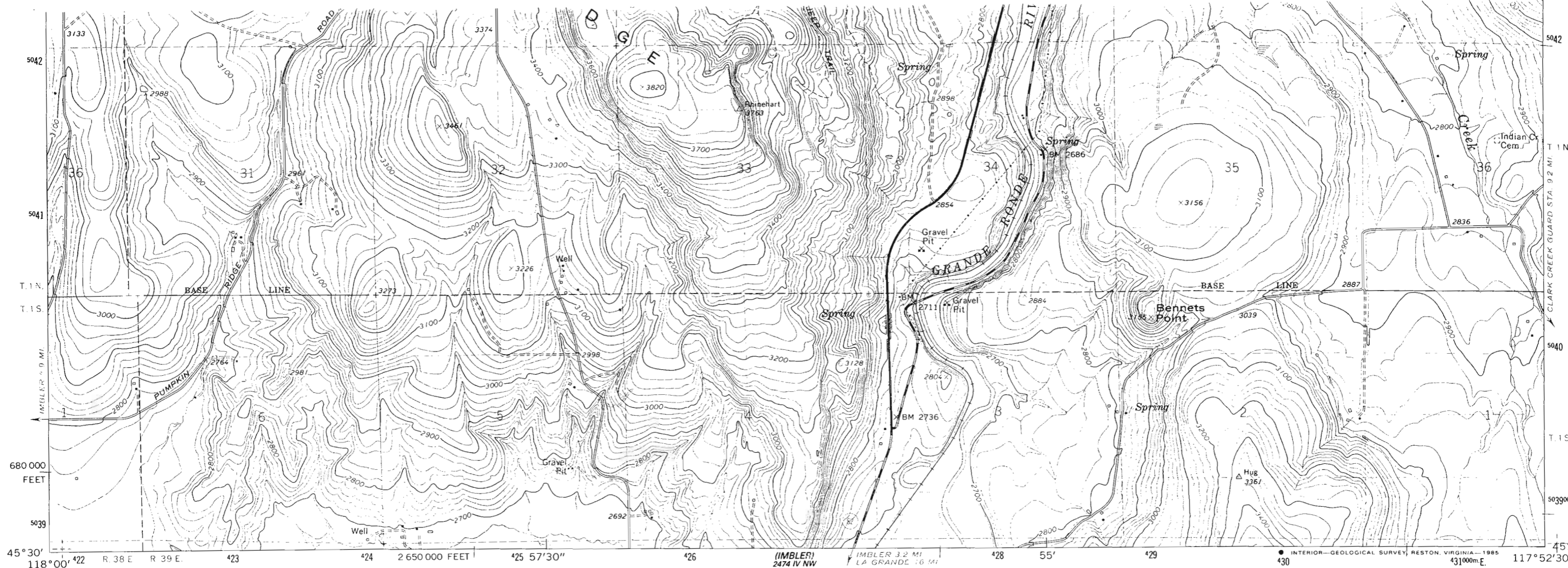
PARTRIDGE CREEK, OREG.  
45117-F8-TF-024

Revisions shown in purple and woodland compiled from aerial photographs taken 1981 and other source data  
Partial field check by U. S. Forest Service. Map edited 1983

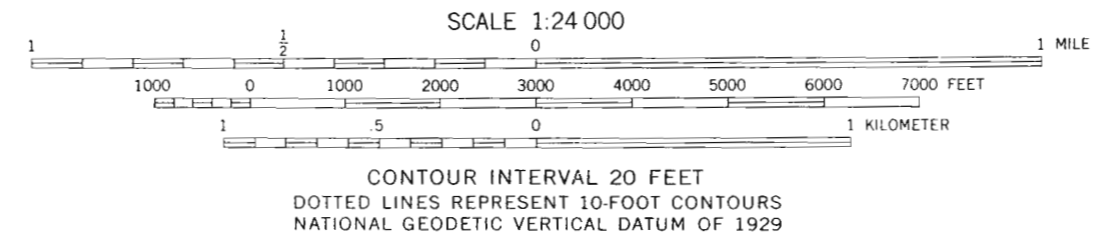
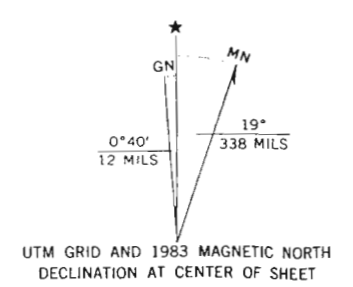
1964  
PHOTOREVISED 1983  
DMA 2475 III NW-SERIES V892

Application No. R-76102  
Permit No.

CERTIFICATE NO. 70088



Mapped, edited, and published by the Geological Survey  
 Control by USGS and NOS/NOAA  
 Topography by photogrammetric methods from aerial photographs taken 1959. Field checked 1964  
 Polyconic projection. 1927 North American Datum  
 10,000-foot grid based on Oregon coordinate system, north zone  
 1000-meter Universal Transverse Mercator grid ticks, zone 11, shown in blue  
 Fine red dashed lines indicate selected fence lines  
 To place on the predicted North American Datum 1983 move the projection lines 17 meters north and 81 meters east as shown by dashed corner ticks  
 There may be private inholdings within the boundaries of the National or State reservations shown on this map



ROAD CLASSIFICATION

Heavy-duty	—————	Light-duty	-----
Medium-duty	-----	Unimproved dirt	-----
		State Route	○

QUADRANGLE LOCATION

OREGON

THIS MAP COMPLIES WITH NATIONAL MAP ACCURACY STANDARDS  
 FOR SALE BY U. S. GEOLOGICAL SURVEY, DENVER, COLORADO 80225, OR RESTON, VIRGINIA 22092  
 A FOLDER DESCRIBING TOPOGRAPHIC MAPS AND SYMBOLS IS AVAILABLE ON REQUEST

Revisions shown in purple and woodland compiled from aerial photographs taken 1981 and other source data  
 Partial field check by U. S. Forest Service. Map edited 1983

ELGIN, OREG.  
 45117-E8-TF-024  
 1964  
 PHOTOREVISED 1983  
 DMA 2475 III SW-SERIES V892

Application No. *R-76102*  
 Permit No.

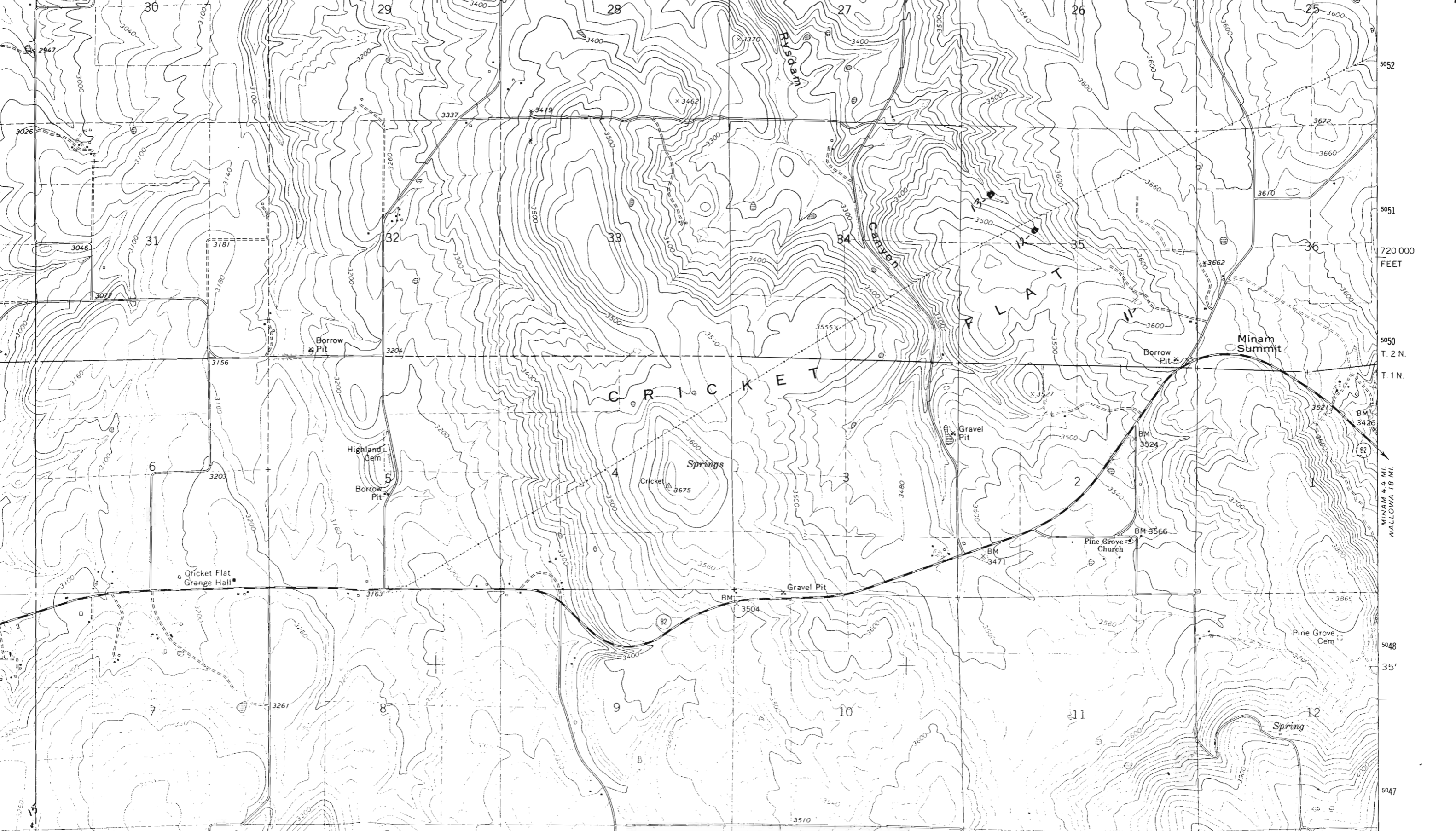
CERTIFICATE NO. 70088

Application No. *R 70102*  
Permit No.  
"CERTIFICATE NO. 70038"

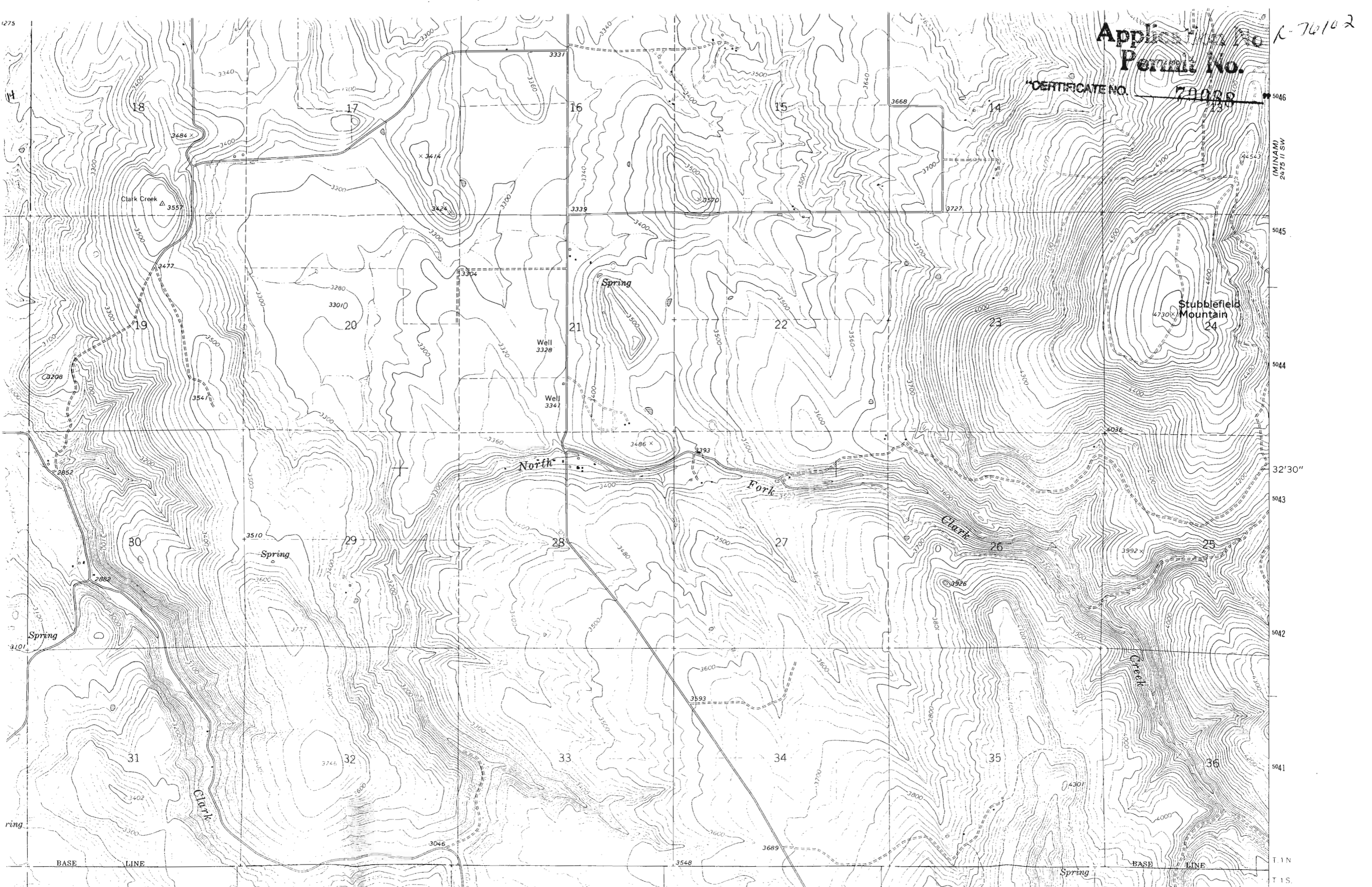
CRICKET FLAT QUADRANGLE  
OREGON-UNION CO.  
7.5 MINUTE SERIES (TOPOGRAPHIC)

2475 11 NW  
(HOWARD BUTTE)

39 E. R. 40 E. 433000m E. 434 50' PALMER JUNCTION 9.4 MI. 2475 11 NE (RONDOWA) 437 438 47'30" 439 440 PALMER JUNCTION 8.4 MI. 2700 000 FEET 441 117°45' 45°37'30" NA



5052  
5051  
720 000  
FEET  
5050  
T. 2 N.  
T. 1 N.  
5048  
35'  
5047



Application No. K-76102  
Permit No. 78022

CERTIFICATE NO. 134

(MINAM)  
2475 II SW

Stubblefield  
Mountain

4730

North

Fork

Clark

Clark

Creek

Clark Creek

Spring

Spring

Spring

Spring

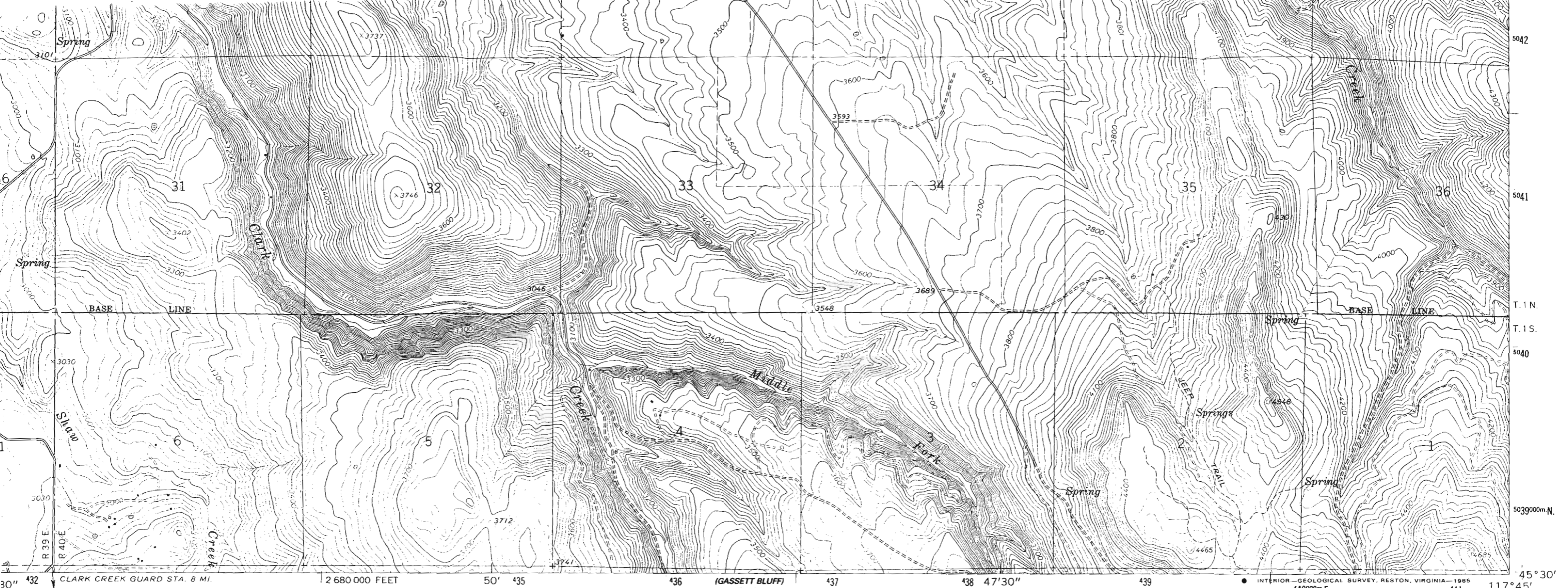
BASE LINE

BASE LINE

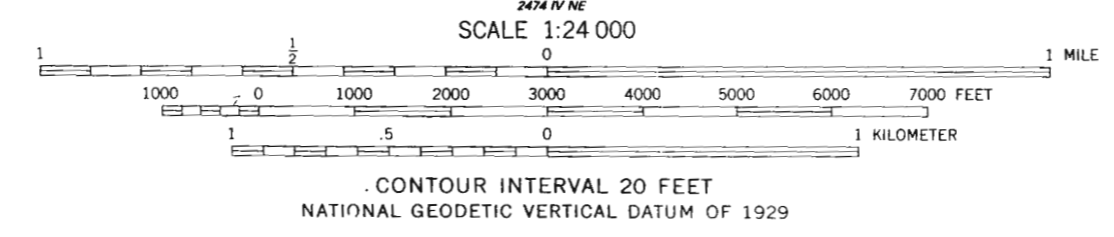
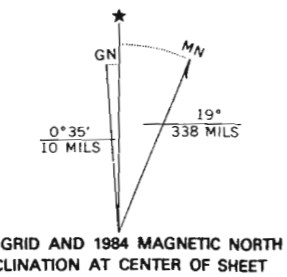
T. 1 N

T. 1 S





pped, edited, and published by the Geological Survey  
 ntrol by USGS and NOS/NOAA  
 ography by photogrammetric methods from aerial  
 tographs taken 1959. Field checked 1964  
 onic projection. 1927 North American datum  
 00-foot grid based on Oregon coordinate system,  
 h zone  
 0-meter Universal Transverse Mercator grid ticks,  
 e 11, shown in blue  
 lace on the predicted North American Datum 1983  
 ve the projection lines 17 meters north and  
 eters east as shown by dashed corner ticks  
 a red dashed lines indicate selected fence lines



ROAD CLASSIFICATION

Medium-duty \_\_\_\_\_ Light-duty \_\_\_\_\_

Unimproved dirt =

○ State Route

THIS MAP COMPLIES WITH NATIONAL MAP ACCURACY STANDARDS  
 FOR SALE BY U. S. GEOLOGICAL SURVEY, DENVER, COLORADO 80225, OR RESTON, VIRGINIA  
 A FOLDER DESCRIBING TOPOGRAPHIC MAPS AND SYMBOLS IS AVAILABLE ON REQUEST

Revision shown in purple and woodland compiled from  
 aerial photographs taken 1981 and other sources  
 Partial field check by U.S. Forest Service. Map edited 1984

CRICKET FLAT, OREG.  
 45117-E7-TF-024

1964  
 PHOTOREVISED 1984  
 DMA 2475 III SE-SERIES V892

Application No. R-76102  
 Permit No.

"CERTIFICATE NO. 70088"