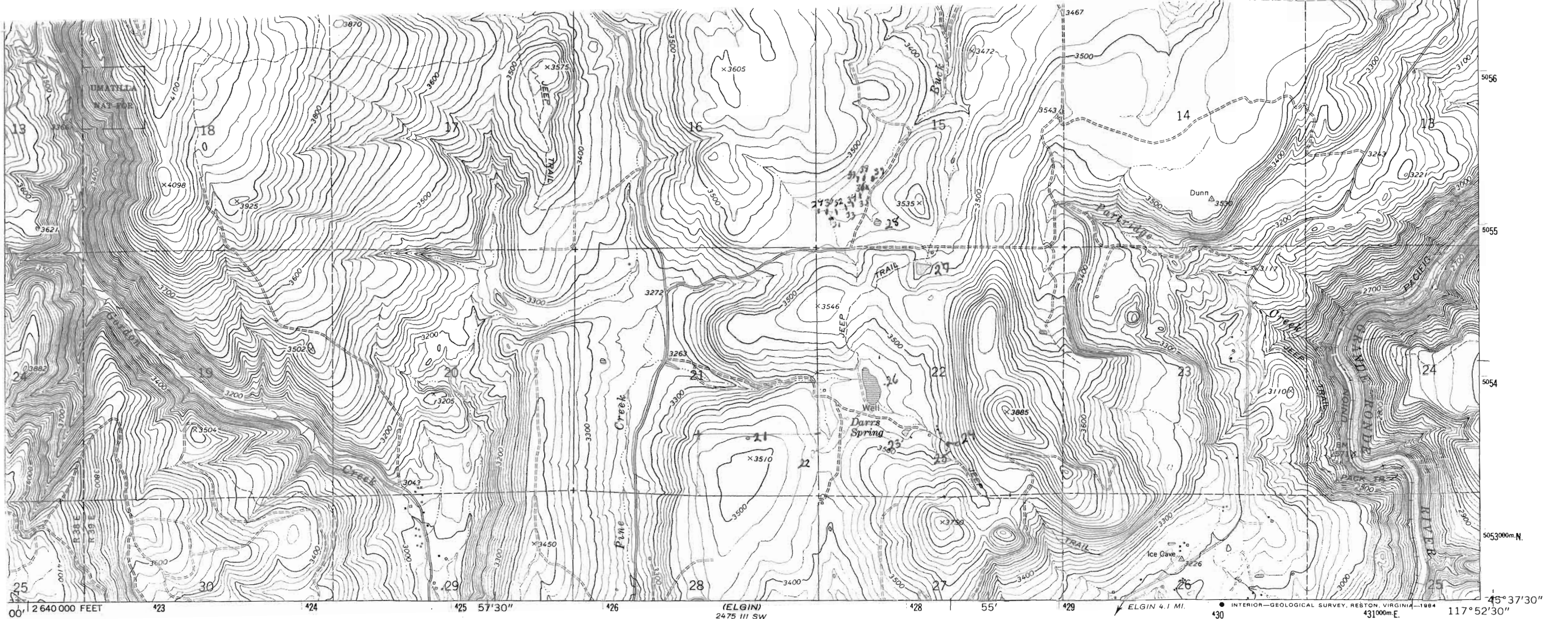
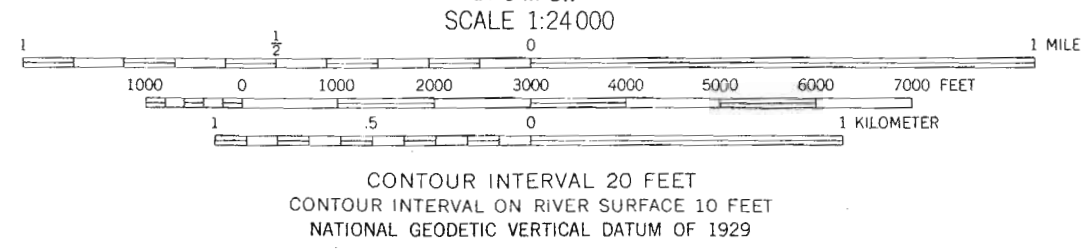
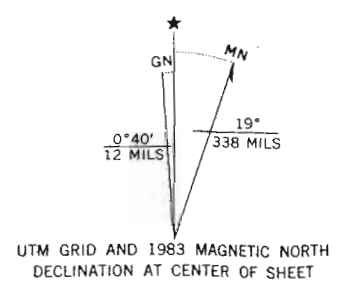


Application No. R-76687
Permit No. 70089
CERTIFICATE NO. 14



Mapped, edited, and published by the Geological Survey
 Control by USGS and NOS/NOAA
 Topography by photogrammetric methods from aerial photographs taken 1959. Field checked 1964
 Polyconic projection. 1927 North American Datum
 10,000-foot grid based on Oregon coordinate system, north zone
 1000-meter Universal Transverse Mercator grid ticks, zone 11, shown in blue
 Where omitted, land lines have not been established
 Fine red dashed lines indicate selected fence lines
 To place on the predicted North American Datum 1983 move the projection lines 17 meters north and 31 meters east as shown by dashed corner ticks



THIS MAP COMPLIES WITH NATIONAL MAP ACCURACY STANDARDS
 FOR SALE BY U. S. GEOLOGICAL SURVEY, DENVER, COLORADO 80225, OR RESTON, VIRGINIA 22092
 A FOLDER DESCRIBING TOPOGRAPHIC MAPS AND SYMBOLS IS AVAILABLE ON REQUEST



QUADRANGLE LOCATION

ROAD CLASSIFICATION
 Light-duty ————— Unimproved dirt = - - - - -

PARTRIDGE CREEK, OREG.
 45117-F8-TF-024
 1964
 PHOTOREVISED 1983
 DMA 2475 III NW—SERIES V892

There may be private inholdings within the boundaries of the National or State reservations shown on this map

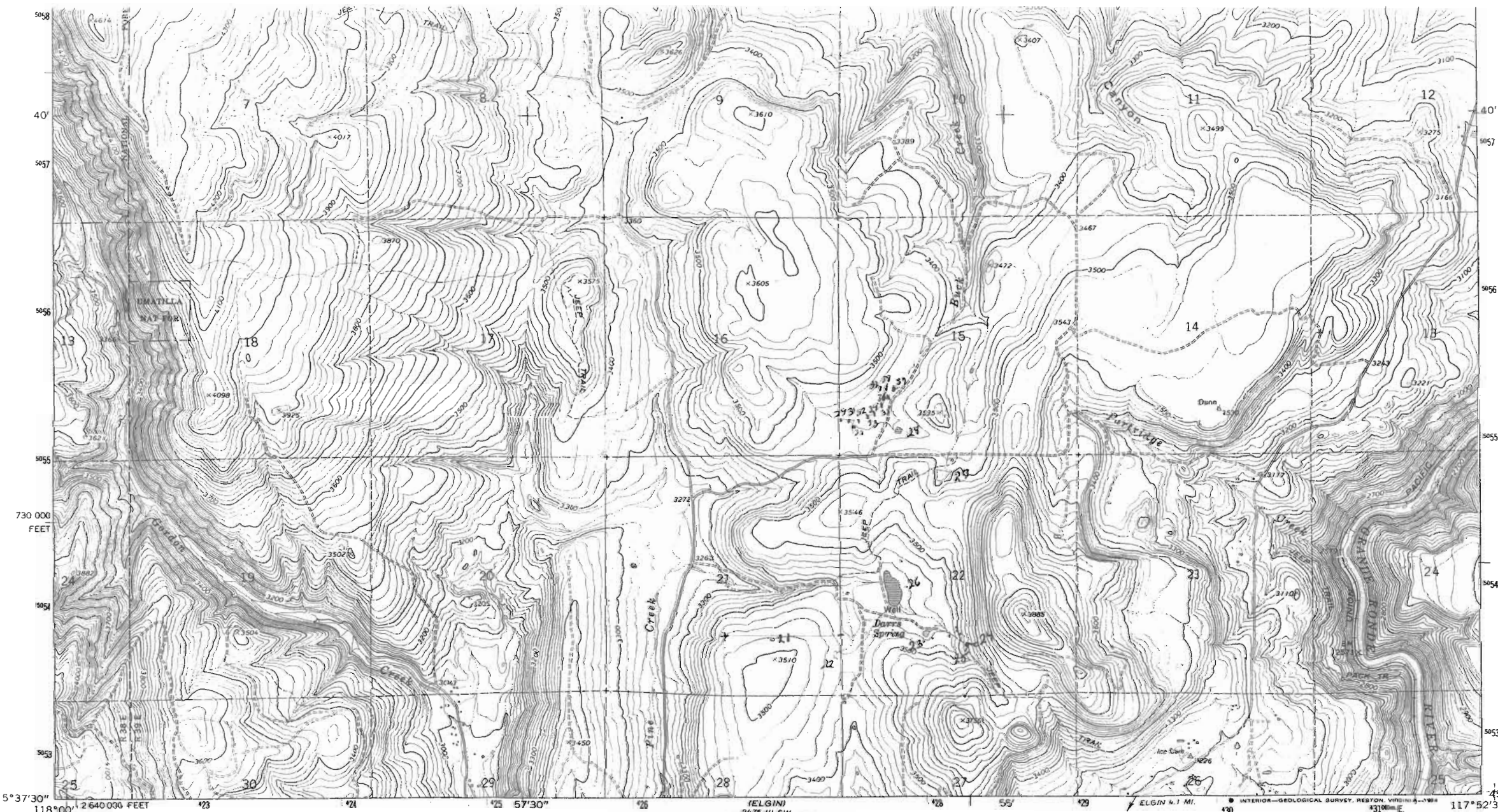
Revisions shown in purple and woodland compiled from aerial photographs taken 1981 and other source data
 Partial field check by U. S. Forest Service. Map edited 1983

Application No. *R-76163*
 Permit No.

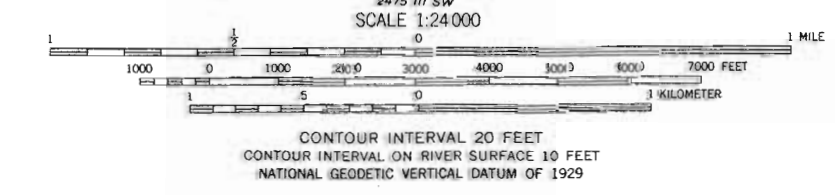
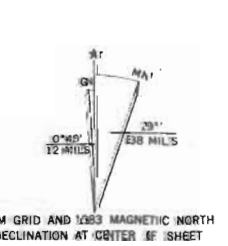
"CERTIFICATE NO. 70089"

70089

"CERTIFICATE NO. "



Mapped, edited, and published by the Geological Survey
 Control by USGS and NOS/NOAA
 Topography by photogrammetric methods from aerial photographs taken 1959. Field checked 1964
 Polyconic projection. 1927 North American Datum
 10,000-foot grid based on Oregon coordinate system, north zone
 1000-meter Universal Transverse Mercator grid ticks, zone 11, shown in blue
 Where omitted, land lines have not been established
 Fine red dashed lines indicate selected fence lines
 To place on the predicted North American Datum 1.983 move the projection lines 17 meters north and 81 meters east as shown by dashed corner ticks



ROAD CLASSIFICATION
 Light-duty _____ Unimproved dirt _____

THIS MAP COMPLIES WITH NATIONAL MAP ACCURACY STANDARDS
 FOR SALE BY U. S. GEOLOGICAL SURVEY, DENVER, COLORADO 80225, OR RESTON, VIRGINIA 22092
 A FOLDER DESCRIBING TOPOGRAPHIC MAPS AND SYMBOLS IS AVAILABLE ON REQUEST

Revisions shown in purple and woodland compiled from aerial photographs taken 1981 and other source data
 Partial field check by U. S. Forest Service. Map edited 1983

OREGON
 QUADRANGLE LOCATION

PARTRIDGE CREEK, OREG.
 45117-F8-TF-024
 1964
 PHOTOREVISED 1983
 DMA 2475 III NW—SERIES V892

There may be private holdings within the boundaries of the National or State reservations shown on this map



5046
(MINAM)
2475 11 SW
5045
5044
32'30"
5043
5042
5041
T.1N.
T.1S.

CERTIFICATE NO. 70089

Application No. R-7610
Permit No.

BASE LINE

BASE LINE

18

17

16

15

14

13

19

20

21

22

23

24

30

29

28

27

26

25

31

32

33

34

Clark Creek
3557

Stubblefield Mountain
4730

Spring

North

Fork

Clark

Spring

Spring

Spring

Well
3328

Well
3341

3486 X

3484 X

3414 X

3424 X

3926

3992 X

3737 X

3746 X

3046

3593

3689

3668

3727

3337

3339

3304

3360

3510

3480

3600

3548

3340

3300

3340

3340

3700

4000

3400

3300

3300

3500

3700

4300

3477

3280

3400

3500

3700

4000

3547

3300

3320

3600

3700

4400

3100

3500

3400

3500

3600

4200

3100

3600

3500

3600

3800

4000

3402

3600

3500

3700

3800

4200

3000

3500

3400

3600

3800

4000

2475 11 NW
HOWARD BUTTE

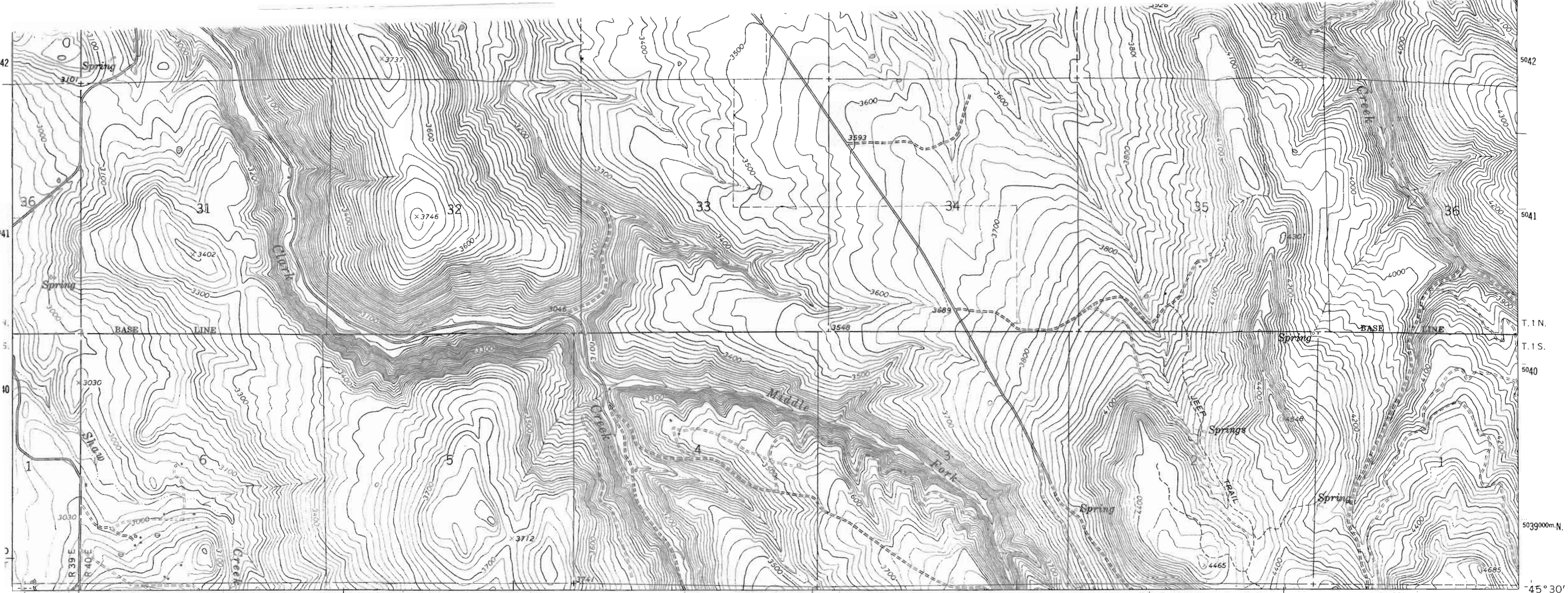
39 E. R. 40 E. 433000m.E. 434 50' PALMER JUNCTION 9.4 MI. 2475 11 NE (RONDOWA) 437 438 47'30" 439 440 PALMER JUNCTION 8.4 MI. 117°45' 2 700 000 FEET 441 45°37'30"



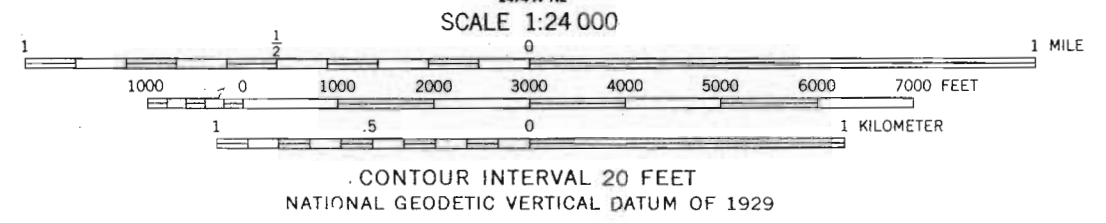
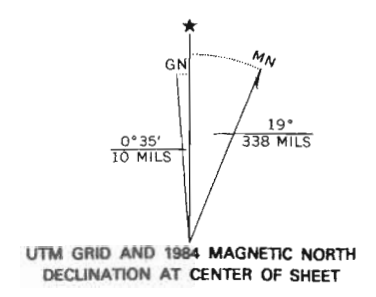
NAT

MINNAM 4.4 MI.
WALLOWA 1.8 MI.

5047



Mapped, edited, and published by the Geological Survey
 Control by USGS and NOS/NOAA
 Topography by photogrammetric methods from aerial photographs taken 1959. Field checked 1964
 Polyconic projection. 1927 North American datum 10,000-foot grid based on Oregon coordinate system, north zone
 1000-meter Universal Transverse Mercator grid ticks, zone 11, shown in blue
 To place on the predicted North American Datum 1983 move the projection lines 17 meters north and 80 meters east as shown by dashed corner ticks
 Fine red dashed lines indicate selected fence lines



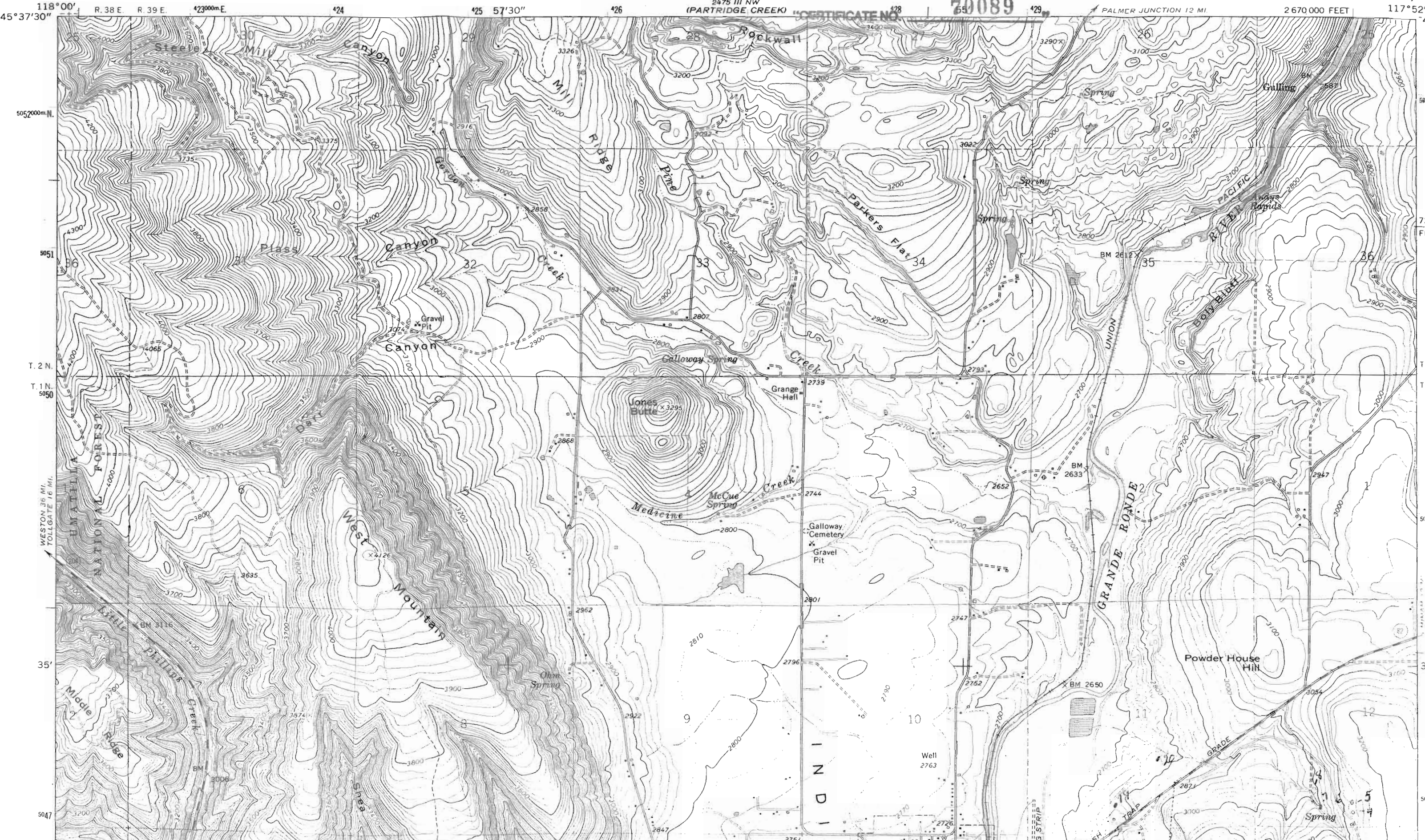
THIS MAP COMPLIES WITH NATIONAL MAP ACCURACY STANDARDS
 FOR SALE BY U. S. GEOLOGICAL SURVEY, DENVER, COLORADO 80225, OR RESTON, VIRGINIA
 A FOLDER DESCRIBING TOPOGRAPHIC MAPS AND SYMBOLS IS AVAILABLE ON REQUEST

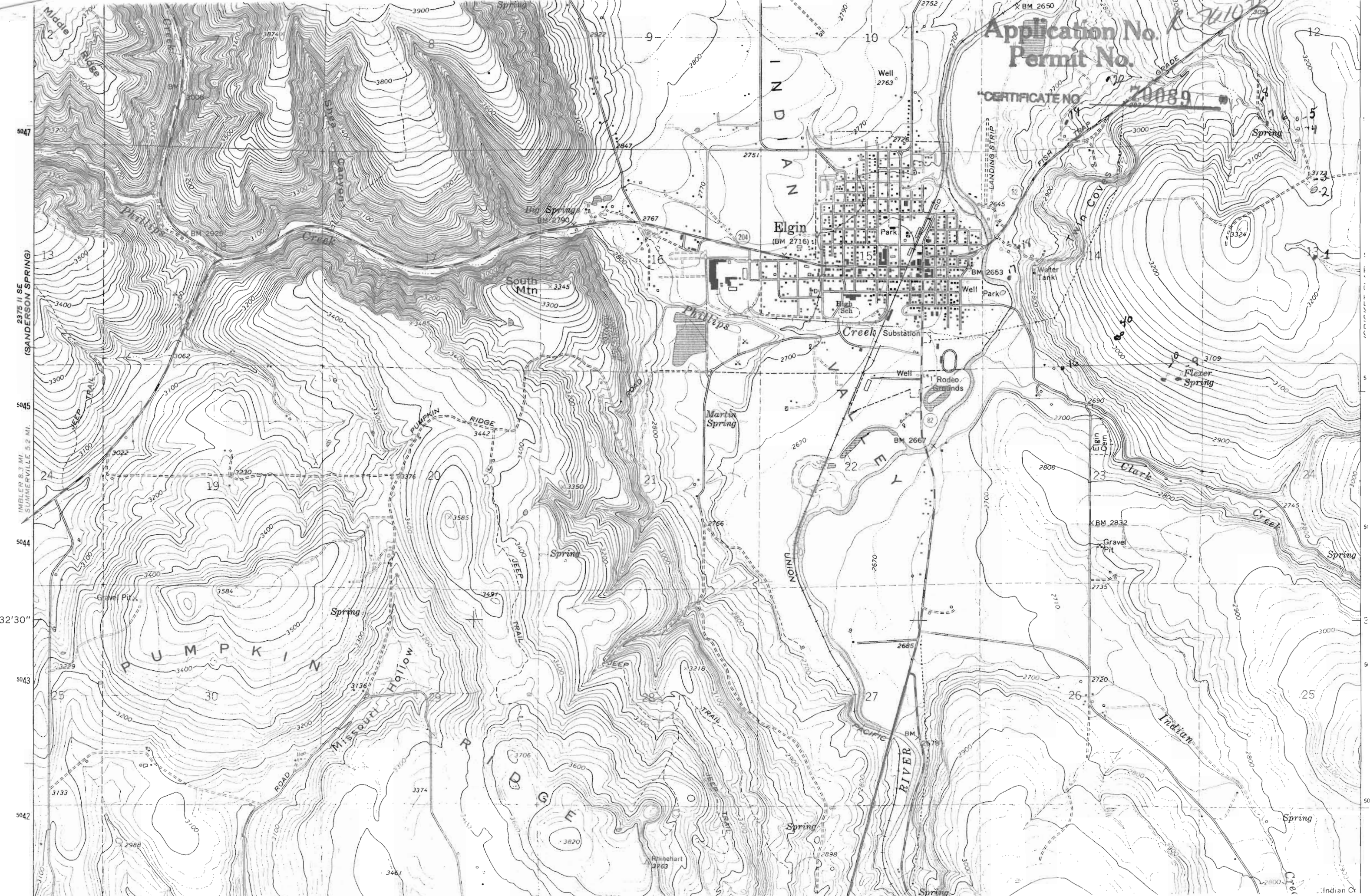


ROAD CLASSIFICATION
 Medium-duty _____ Light-duty _____
 Unimproved dirt = = = = =
 ○ State Route

CRICKET FLAT, OREG.
 45117-E7-TF-024
 1964
 PHOTOREVISED 1984
 DMA 2475 III SE-SERIES V892

Application No. R-76103
 Permit No.
 "CERTIFICATE NO. 70089"





Application No. 7610
Permit No.

CERTIFICATE NO. 70089

2375 11 SE (SANDERSON SPRING)
IMBLER 8.3 MI
SUMMERSVILLE 5.2 MI

5047

5045

5044

5043

5042

32'30"

I
N
D
I
A
N

Elgin
(BM 2716)

South
Mtn
3345

PUMPKIN
RIDGE
3442

P
U
M
P
K
I
N

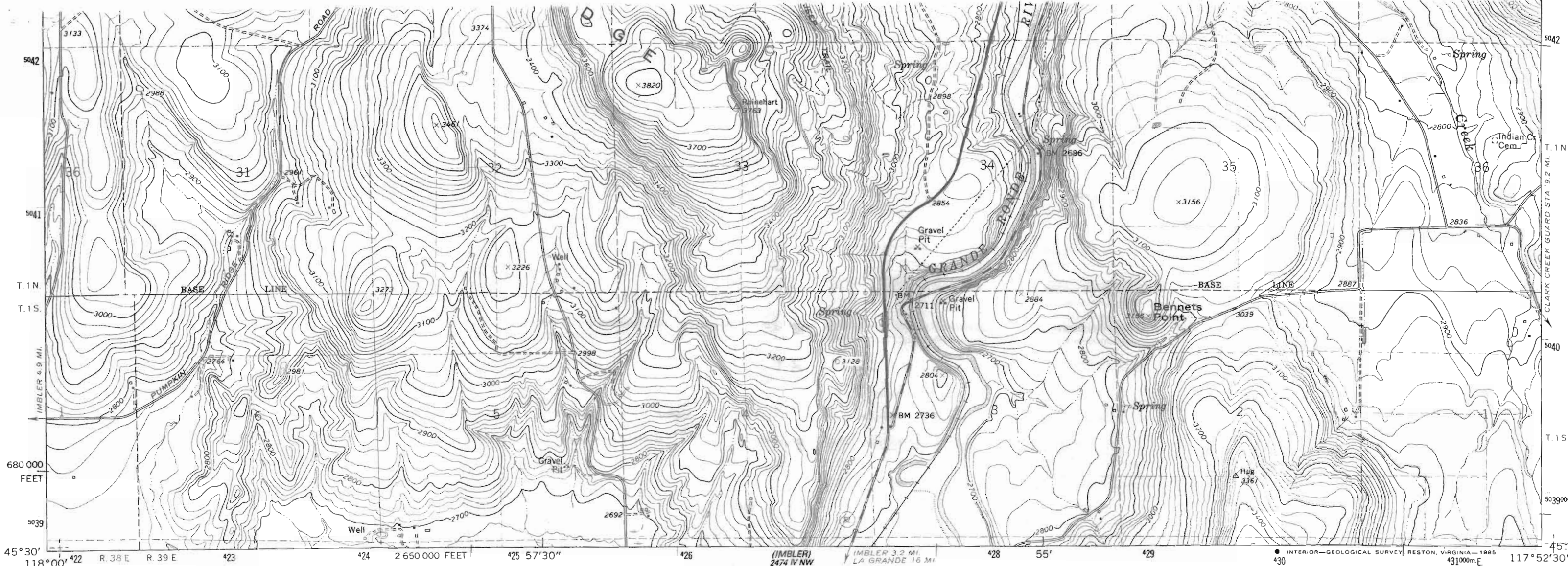
M
I
S
S
O
U
R
I
H
O
L
L
O
W

D
O
G
E
Y
H
O
L
L
O
W

P
A
C
I
F
I
C
R
I
V
E
R

I
N
D
I
A
N
C
R
E
E
K

Indian Cr



Mapped, edited, and published by the Geological Survey

Control by USGS and NOS/NOAA

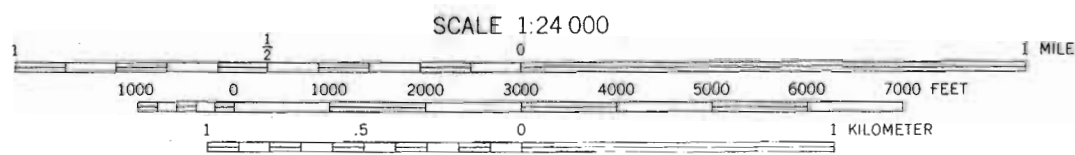
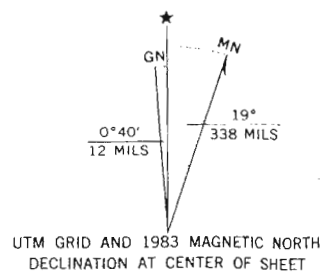
Topography by photogrammetric methods from aerial photographs taken 1959. Field checked 1964

Polyconic projection. 1927 North American Datum
 10,000-foot grid based on Oregon coordinate system, north zone
 1000-meter Universal Transverse Mercator grid ticks, zone 11, shown in blue

Fine red dashed lines indicate selected fence lines

To place on the predicted North American Datum 1983 move the projection lines 17 meters north and 81 meters east as shown by dashed corner ticks

There may be private inholdings within the boundaries of the National or State reservations shown on this map



SCALE 1:24 000
 CONTOUR INTERVAL 20 FEET
 DOTTED LINES REPRESENT 10-FOOT CONTOURS
 NATIONAL GEODETIC VERTICAL DATUM OF 1929

THIS MAP COMPLIES WITH NATIONAL MAP ACCURACY STANDARDS
 FOR SALE BY U. S. GEOLOGICAL SURVEY, DENVER, COLORADO 80225, OR RESTON, VIRGINIA 22092
 A FOLDER DESCRIBING TOPOGRAPHIC MAPS AND SYMBOLS IS AVAILABLE ON REQUEST



QUADRANGLE LOCATION

ROAD CLASSIFICATION

- Heavy-duty —————
- Medium-duty ————
- Light-duty - - - - -
- Unimproved dirt - - - - -
- State Route

ELGIN, OREG.
 45117-E8-TF-024

1964
 PHOTOREVISED 1983
 DMA 2475 III SW—SERIES V892

Application No. *R-76103*
 Permit No.

*CERTIFICATE NO. 70089