

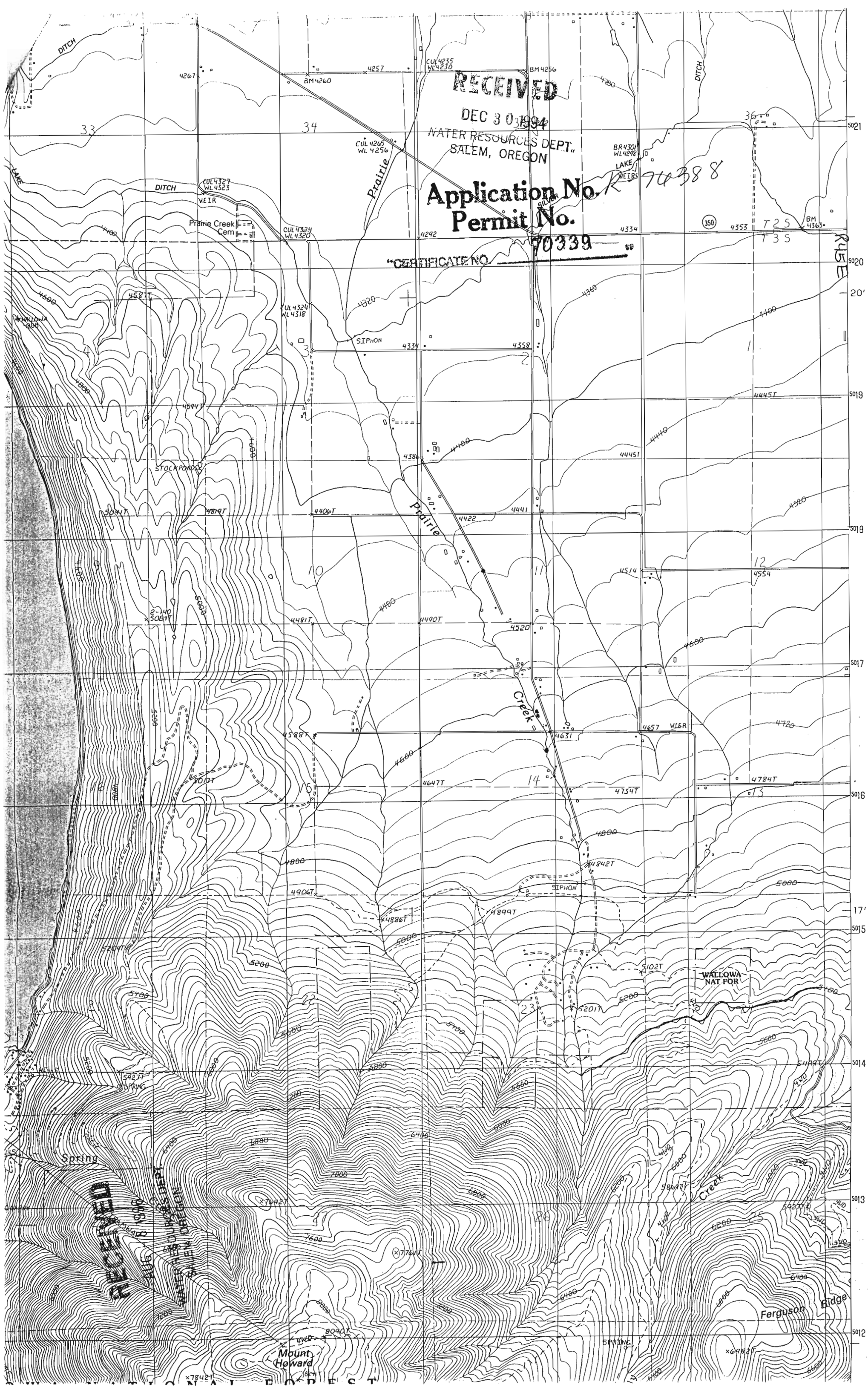
RECEIVED

DEC 30 1994

WATER RESOURCES DEPT.
SALEM, OREGON

Application No. *R 74388*
Permit No. *70339*

CERTIFICATE NO. *70339*



RECEIVED
WATER RESOURCES DEPT.
SALEM, OREGON

Mount Howard

Ferguson Bridge

WALLOWA NAT FOR

Prairie Creek Cem

Stock Pond

Spring

Spring

CUL 4265 WL 4256

CUL 4327 WL 4323

CUL 4324 WL 4320

CUL 4324 WL 4318

CUL 4265 WL 4256

SIPHON

SIPHON

BR 4301 WL 4298

BR 4301 WL 4298

BM 4365

BM 4260

BM 4256

4292

4334

350

4353

725

735

4320

4334

4358

4386

4400

4422

4480

4490T

4520

4588T

4600

4647T

4677T

4686T

4786T

4800

4842T

4899T

4906T

4988T

5000

4360

4440

4445T

4445T

4440

4514

4540

4514

4514

4600

4657

4631

4720

4734T

4784T

4800

4842T

4899T

4906T

4988T

5000

4445T

4445T

4520

4554

4600

4657

4631

4720

4734T

4784T

4800

4842T

4899T

4906T

4988T

5000

5021

5020

5019

5018

5017

5016

5015

5014

5013

5012

5011