

HURON
#15

RECEIVED

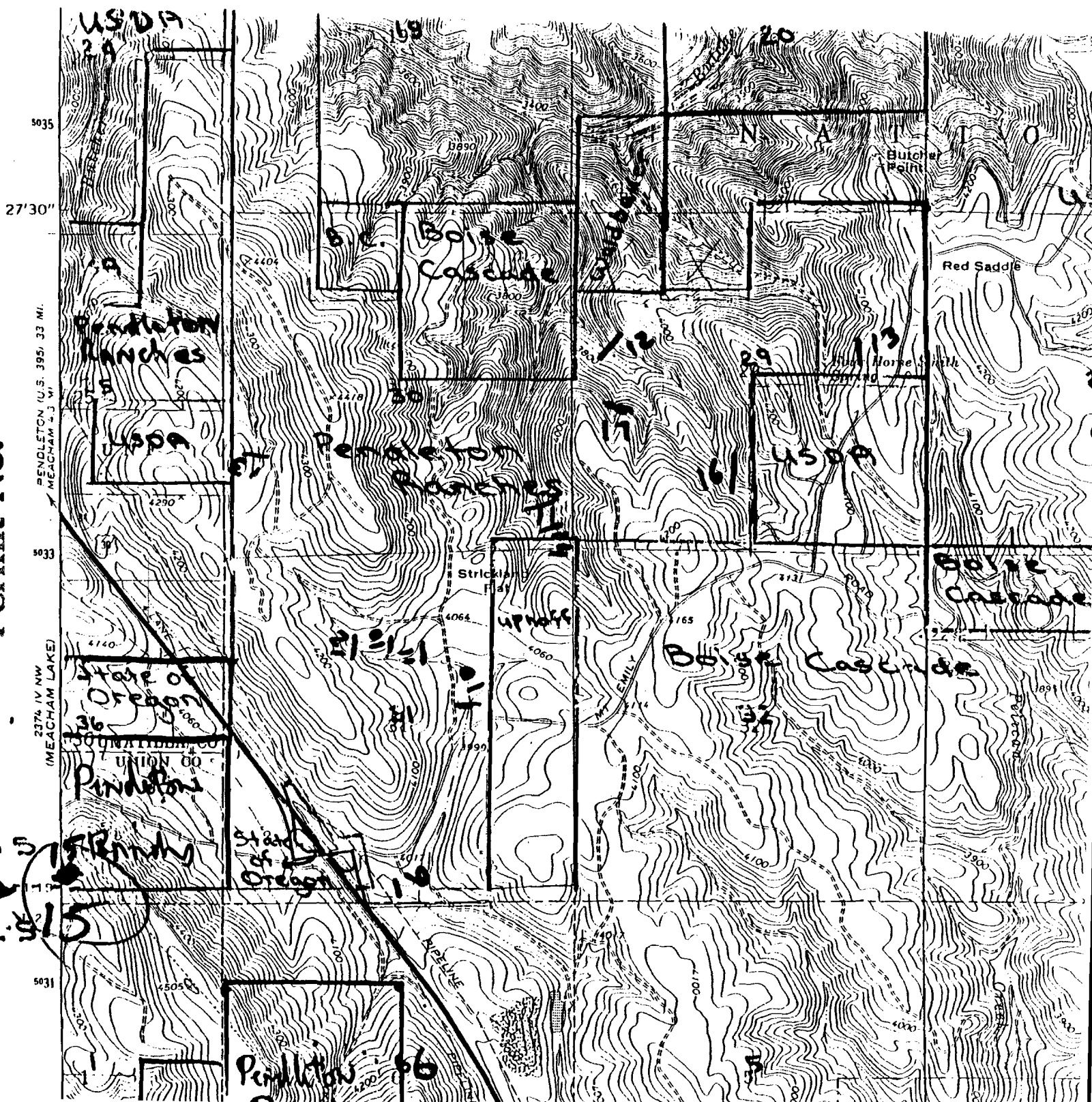
DEC 30 1994

CERTIFICATE NO.

70011

WATER RESOURCES DEPT.
SALEM, OREGON

Application No. R-77210
Permit No.

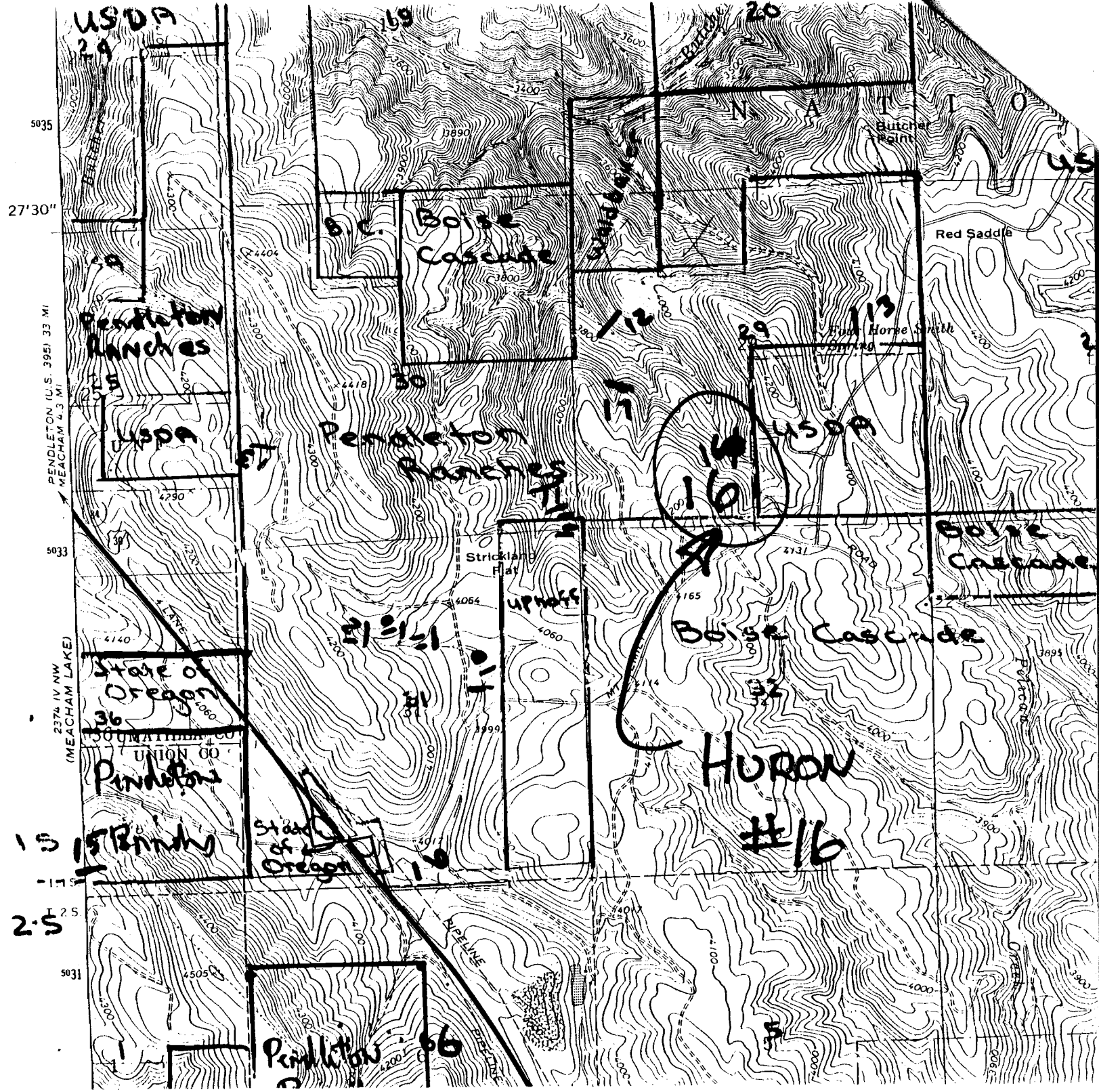


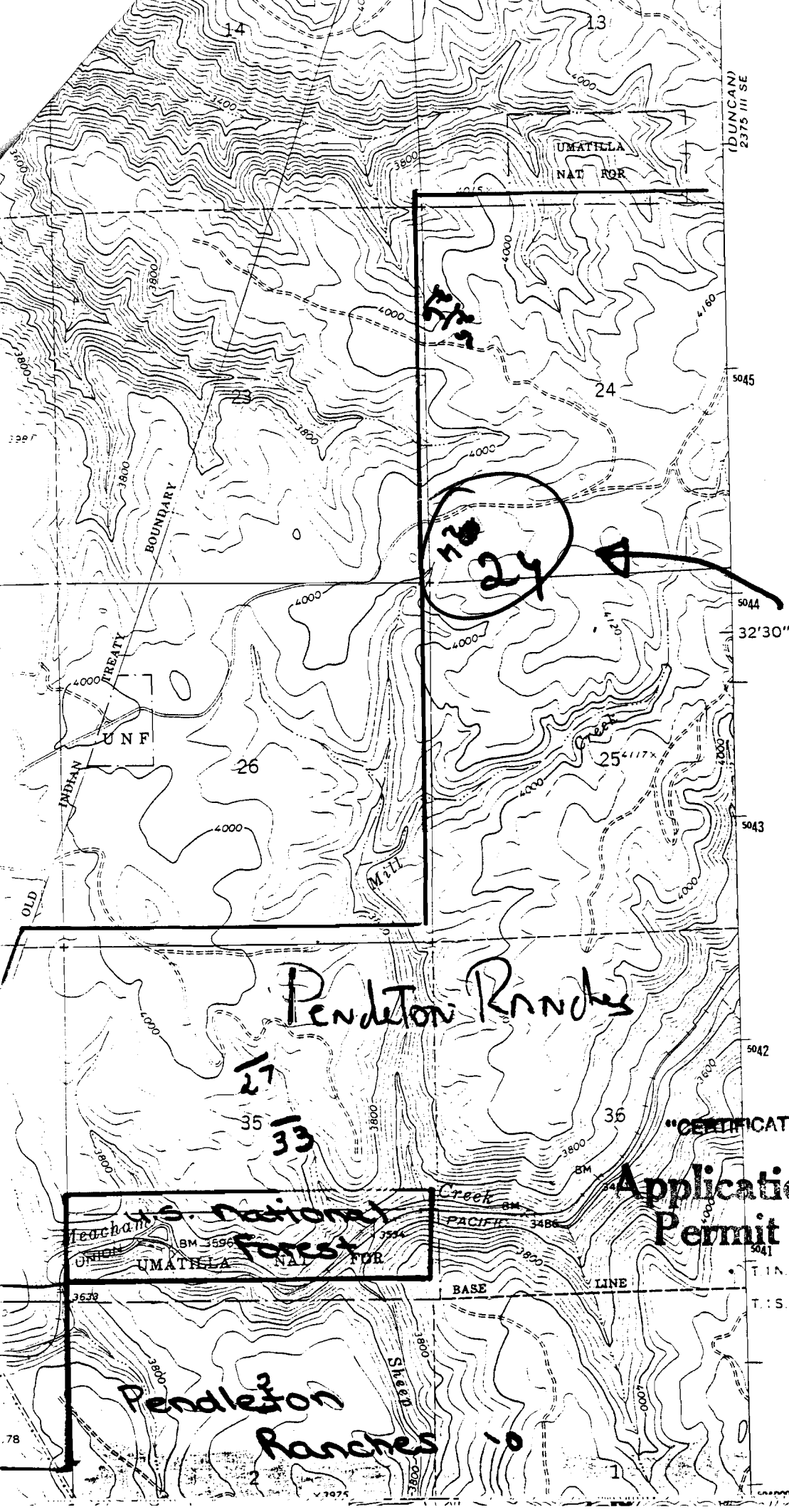
Application No. R-77210
Permit No. _____
"CERTIFICATE NO. _____"

RECEIVED

DEC 30 1994
WATER RESOURCES DEPT.
SALEM, OREGON

T 15
T 11
T 25





RECEIVED

DEC 30 1994

WATER RESOURCES DEPT.
SALEM, OREGON

Marchon
#24

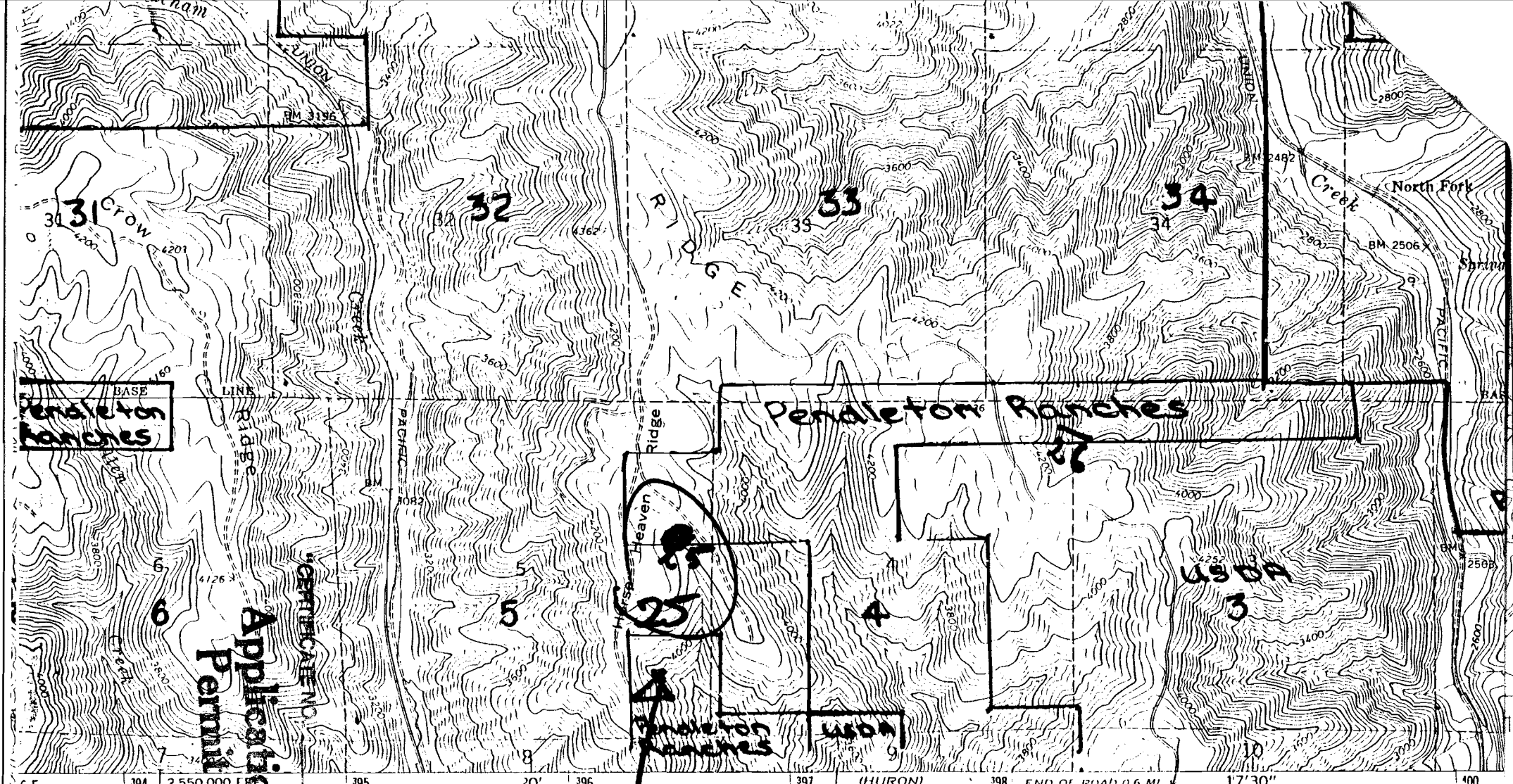
Pendleton Ranches

27
35
33

"CERTIFICATE NO. 10011"

Application No. R-77210
Permit No.

Pendleton
Ranches 10



Penaletton Ranches

DUGAN #25

Penaletton Ranches

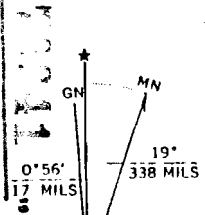
DUGAN #25

Application No. R-7721D
Permit No.

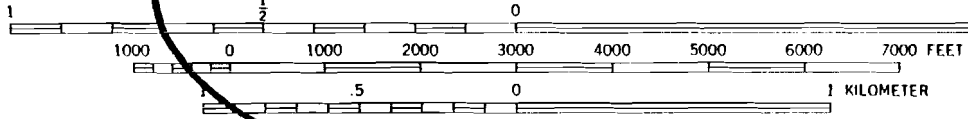
Published by the Geological Survey

Photographic methods from aerial photographs field checked 1964
North American Datum
Lambert conformal conic projection
Universal Transverse Mercator grid ticks
North American Datum 1983
Section corners north and south
Section corners shown on this map

UTM GRID AND 1983 MAGNETIC NORTH DECLINATION AT CENTER OF SHEET



SCALE 1:24 000



CONTOUR INTERVAL 40 FEET
NATIONAL GEODETIC VERTICAL DATUM OF 1929

DUGAN #25

THIS MAP COMPLIES WITH NATIONAL MAP ACCURACY STANDARDS
FOR SALE BY U. S. GEOLOGICAL SURVEY, DENVER, COLORADO 80225, OR RESTON, VIRGINIA 22092
A FOLDER DESCRIBING TOPOGRAPHIC MAPS AND SYMBOLS IS AVAILABLE ON REQUEST

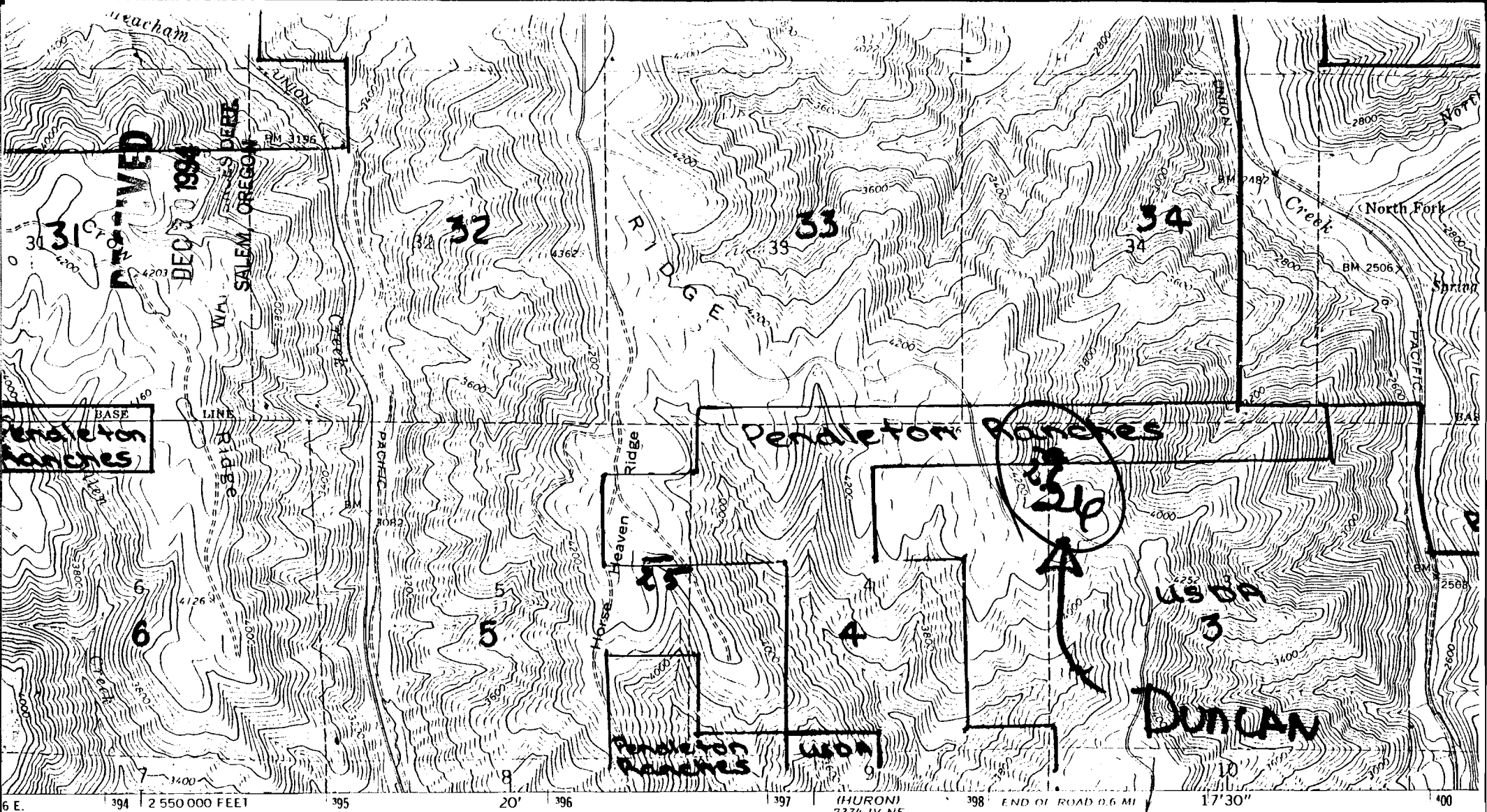
WAILELE
SALEM, OREGON
SOURCES DEPT.

DEC 30 1994

RECEIVED

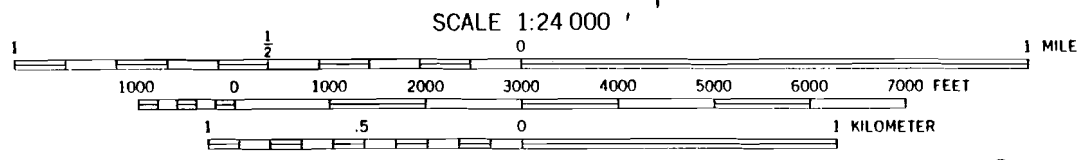
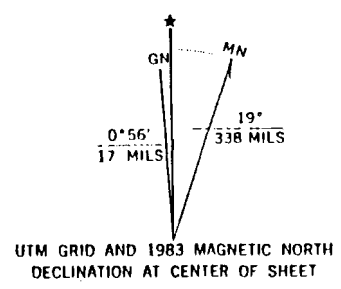
Revisions shown in purple and aerial photographs taken 1981
Partial field check by U. S. For

QUADRAN



Published by the Geological Survey

NOAA
 Methods from aerial
 field checked 1964
 North American Datum
 Oregon coordinate system,
 Transverse Mercator grid ticks,
 Mean Datum 1983
 and
 ticks
 series



CONTOUR INTERVAL 40 FEET
 NATIONAL GEODETIC VERTICAL DATUM OF 1929

CERTIFICATE NO. 100211
 Application No. R-77210
 Permit No.

THIS MAP COMPLIES WITH NATIONAL MAP ACCURACY STANDARDS
 FOR SALE BY U. S. GEOLOGICAL SURVEY, DENVER, COLORADO 80225, OR RESTON, VIRGINIA 22092
 A FOLDER DESCRIBING TOPOGRAPHIC MAPS AND SYMBOLS IS AVAILABLE ON REQUEST

Revisions shown in purple and
 aerial photographs taken 1981
 Partial field check by U. S. For