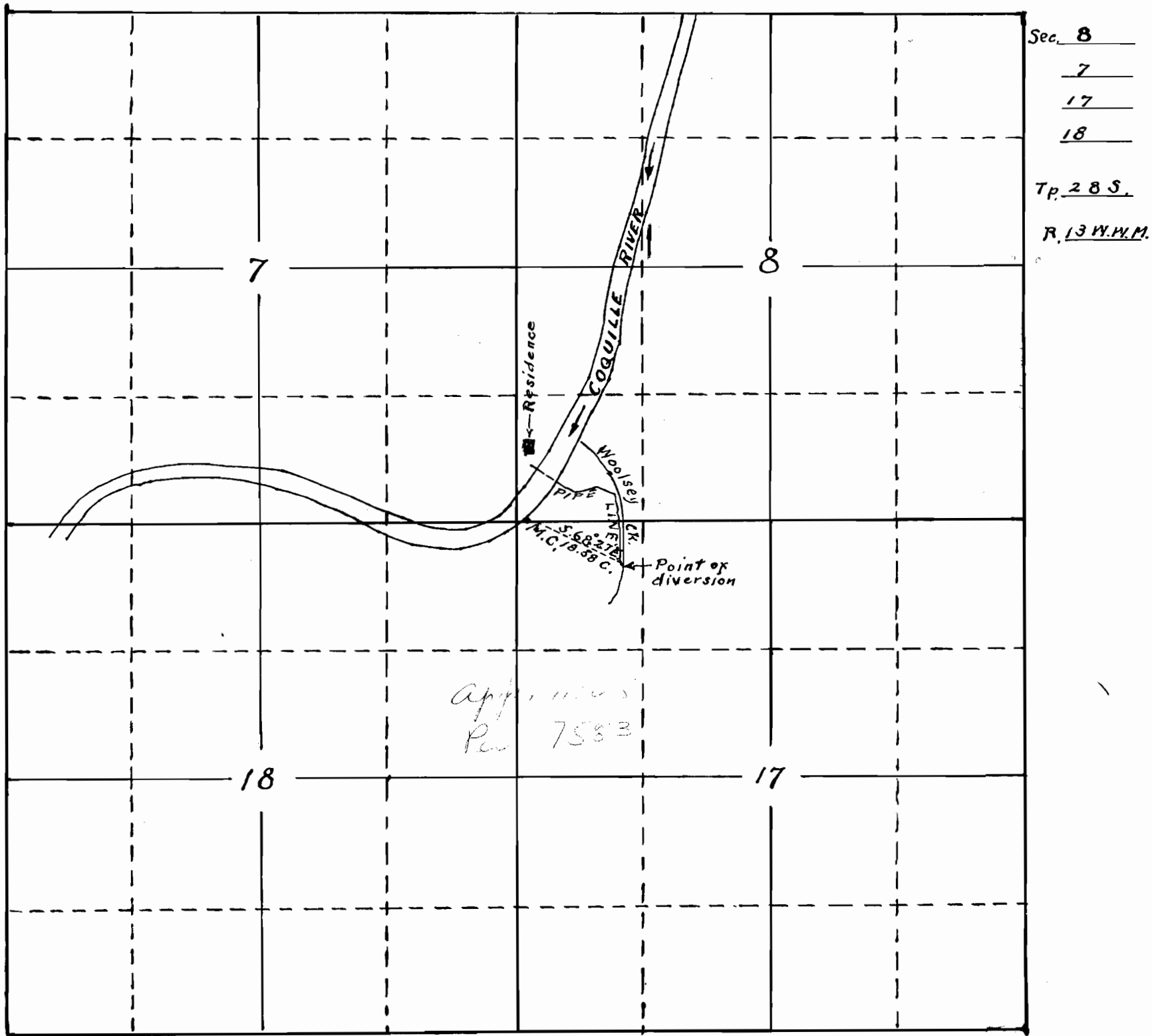


SKETCH

— accompanying application of —  
— H.J. BERRY —  
— to appropriate water from —  
— Woolsey Creek in —  
— Sec. 17, T. 28 S. R. 13 W. N. M. —



I, Charles Sutton McCulloch, of Bandon Oregon, do hereby certify that this map was made from notes taken during an actual survey made by me on September 5<sup>th</sup> 1926, and that it correctly represents the works described in the accompanying application, together with the location of streams and other ditches in the immediate vicinity.

Charles Sutton McCulloch

Registered Professional Engineer.

Oregon No. 620.

Dec. 8, 1919.

Charles S. McCulloch

11105  
7583