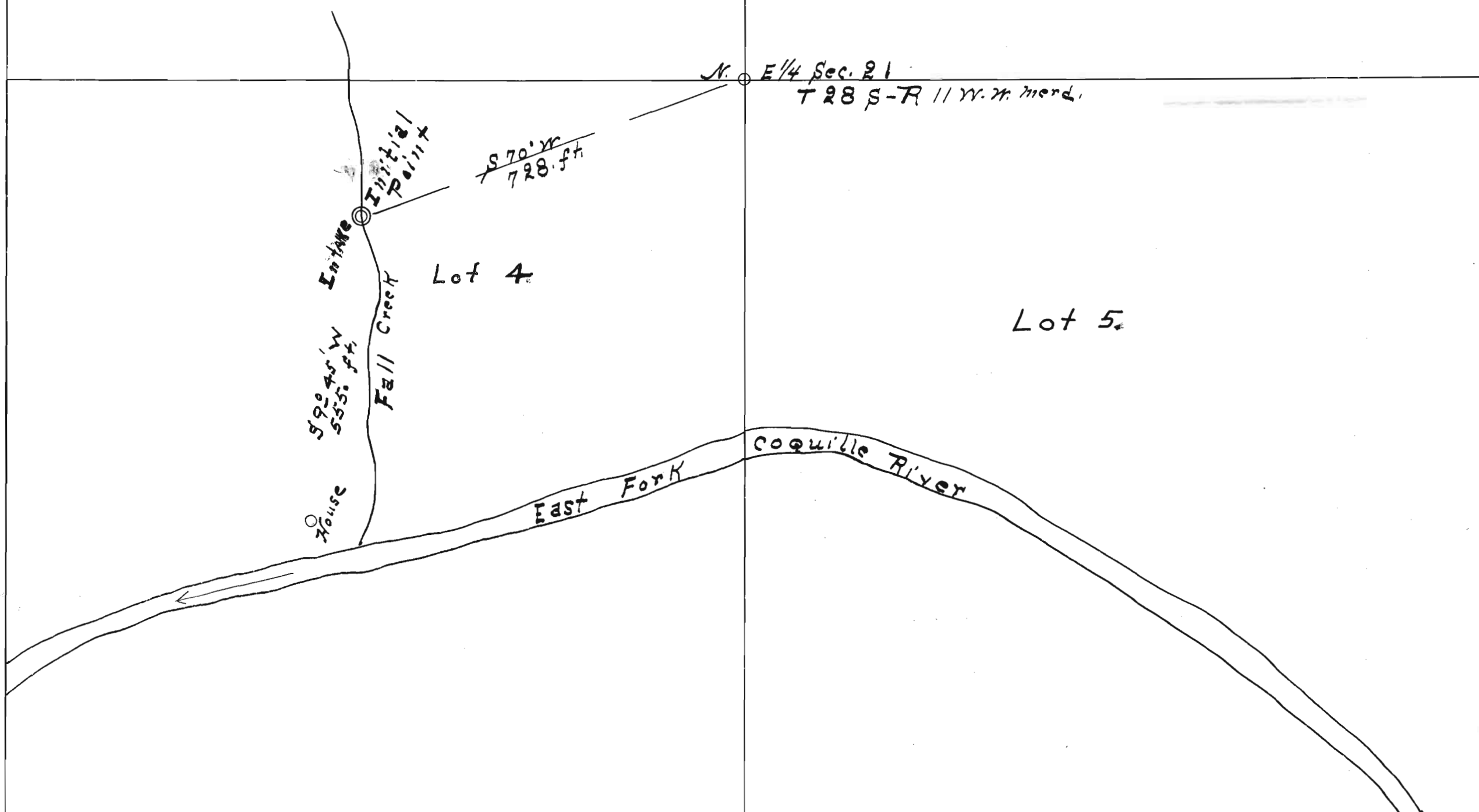


MAP Showing the Location of a pipe line, located in the SW 1/4 NE 1/4 section 21 Tp. 28 S-R 11 W. W. merid. taken out of Fall Creek, a small tributary of the East Fork of the Coquille River. Survey made for A. J. Mayse of Dora, Coos County Ore. scale 1" = 200. ft.

I, E. H. Kern, of Coquille Coos Co. Oregon do hereby certify that this map was made from notes taken during an actual survey made by me on the 19<sup>th</sup> day of March 1926, and that it correctly represents the works described in the accompanying application.

E. H. Kern, Registered  
 professional Engineer  
 Oregon license No. 843  
 Dec. 31, 1919.



STATE ENGINEER  
 RECEIVED

MAR 29 1926

SALEM OREGON

Application No. 10676  
 Permit No. 7203