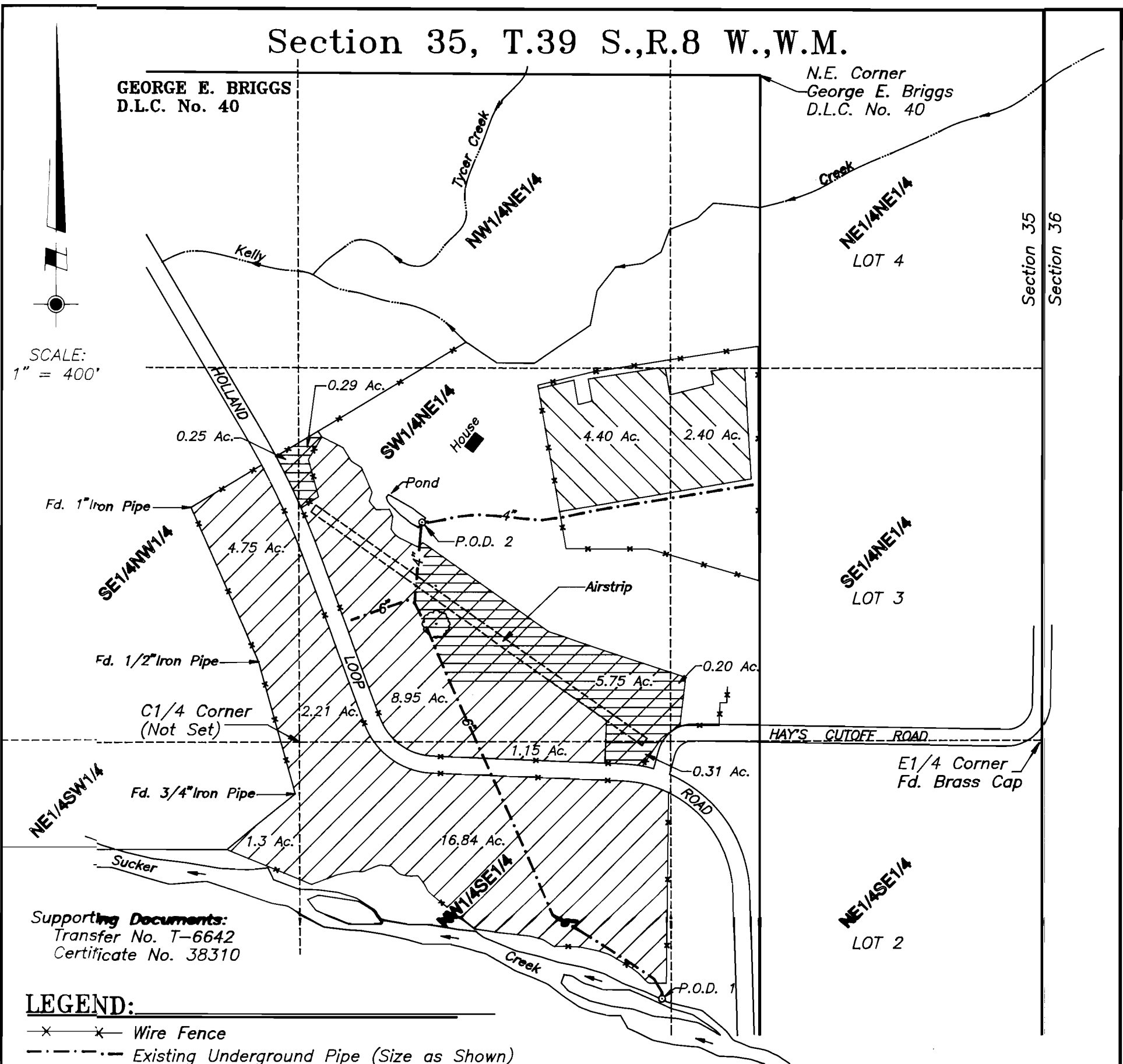


Section 35, T.39 S.,R.8 W.,W.M.

GEORGE E. BRIGGS
D.L.C. No. 40

N.E. Corner
George E. Briggs
D.L.C. No. 40

SCALE:
1" = 400'



Supporting Documents:
Transfer No. T-6642
Certificate No. 38310

LEGEND:

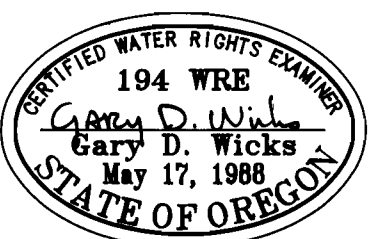
- x-x- Wire Fence
- - - Existing Underground Pipe (Size as Shown)
- Authorized Place of use per Certificate No. 38310 & Transfer No. P-79 (Priority Date = 1857) 42 Acres
17.2 Acres in SW1/4NE1/4 1.3 Acres in NE1/4SW1/4
0.2 Acres in SE1/4NE1/4 18.3 Acres in NW1/4SE1/4
5.0 Acres in SE1/4NW1/4
- Transfer to: Place of use authorized by Transfer No. T-6642 (6.80 Acres)
4.40 Acres in SW1/4NE1/4
2.40 Acres in SE1/4NE1/4
- Transfer from: Authorized Place of use per Certificate No. 38310 & Transfer No. P-79, (6.80 Acres)
0.25 Acres in SE1/4NW1/4 0.20 Acres in SE1/4NE1/4
0.31 Acres in NW1/4SE1/4 6.04 Acres in SW1/4NE1/4

P.O.D. 1 Authorized Point of Diversion per Certificate No. 38310,
1357'W and 926'S of the E1/4 Corner of Section 35.
P.O.D. 2 Additional Point of Diversion, 2216'W and 769'N of the E1/4 Cor. of Section 35.

Ties to the diversion points are based upon measurements made to found monuments per C.S. 115-53 & 20-53. Survey ties were made using a Wild T-1600 Theomat and a Distomat DI-1600. This plat was prepared for the purpose of identifying the location of the water rights only. There is no intent to provide dimensions or locations of property ownership lines. A five page site report accompanies this plat.

\\bendock\bendock.dwg

PROJECT NO. 681-00-446
DRAWING NO. 82-11.17
DATE 9-8-00
SCALE 1" = 400'



PLAT OF CLAIM OF BENEFICIAL USE	
LOCATED IN GEORGE E. BRIGGS D.L.C. No. 40 Section 35, T.39 S.,R.8 W.,W.M. Josephine County, Oregon	
PREPARED FOR: Terry & Cate Bendock 2789 Holland Loop Road Cave Junction, Oregon 97523 Tel. (541) 592-5333	PREPARED BY: WICKS ENGINEERING & SURVEYING 311 N.E. "D" Street Grants Pass, Oregon 97526 Tel. (541) 479-3436