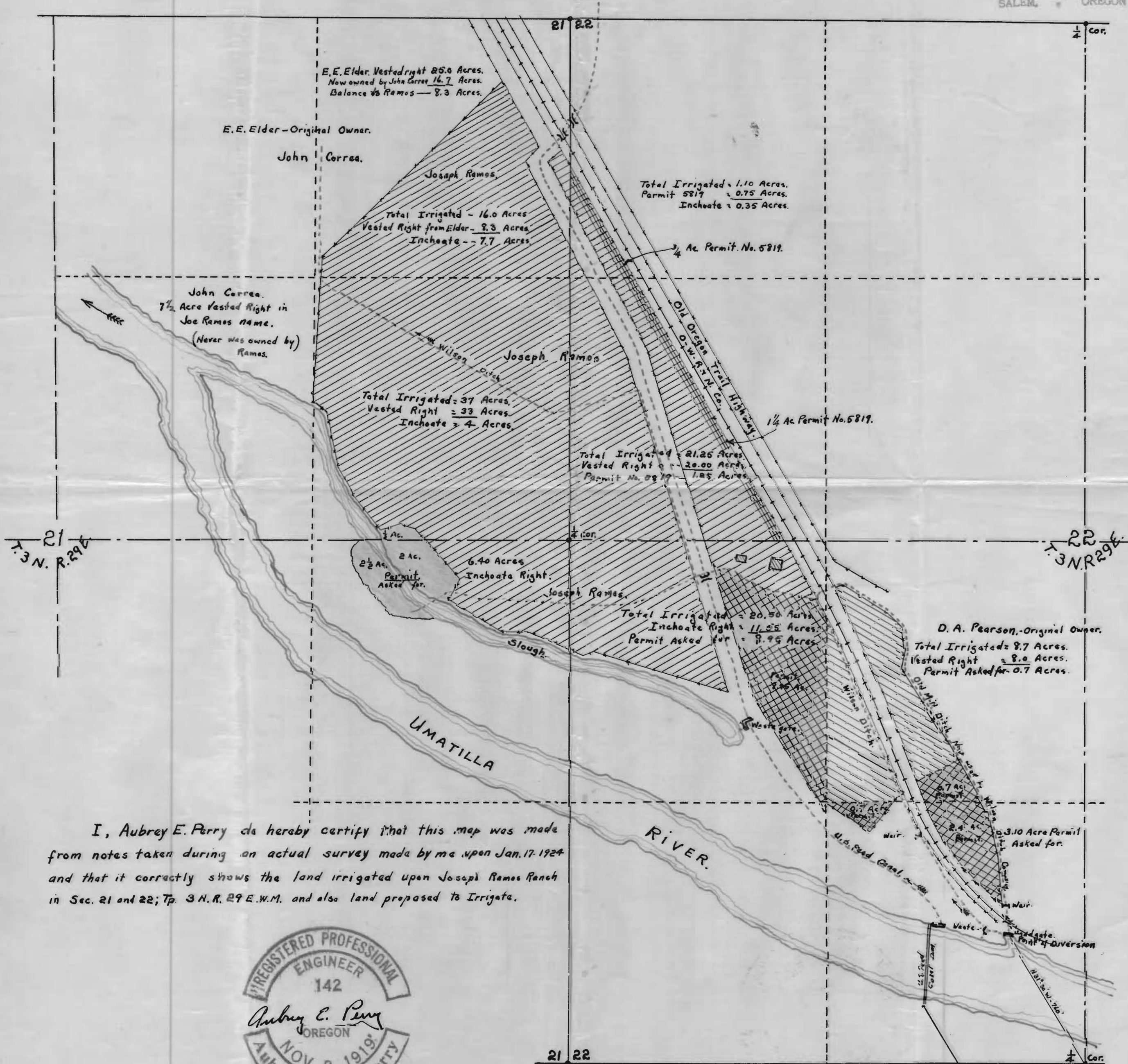


MAP  
Showing Land Irrigated  
on  
Joseph Ramos Ranch at Echo-Oregon.  
Scale 1"=400'.

STATE ENGINEER  
RECEIVED

JAN 21 1924

SALEM OREGON



I, Aubrey E. Perry do hereby certify that this map was made from notes taken during an actual survey made by me upon Jan. 17, 1924 and that it correctly shows the land irrigated upon Joseph Ramos Ranch in Sec. 21 and 22; T<sub>3</sub> N. R. 29 E. W.M. and also land proposed to irrigate.



Application No. 9349  
Permit No. 6179