

Handwritten notes

R75298

75543
~~69169~~

NE1/4 SEC.22 T.32S. R.5W. W.M.
DOUGLAS COUNTY

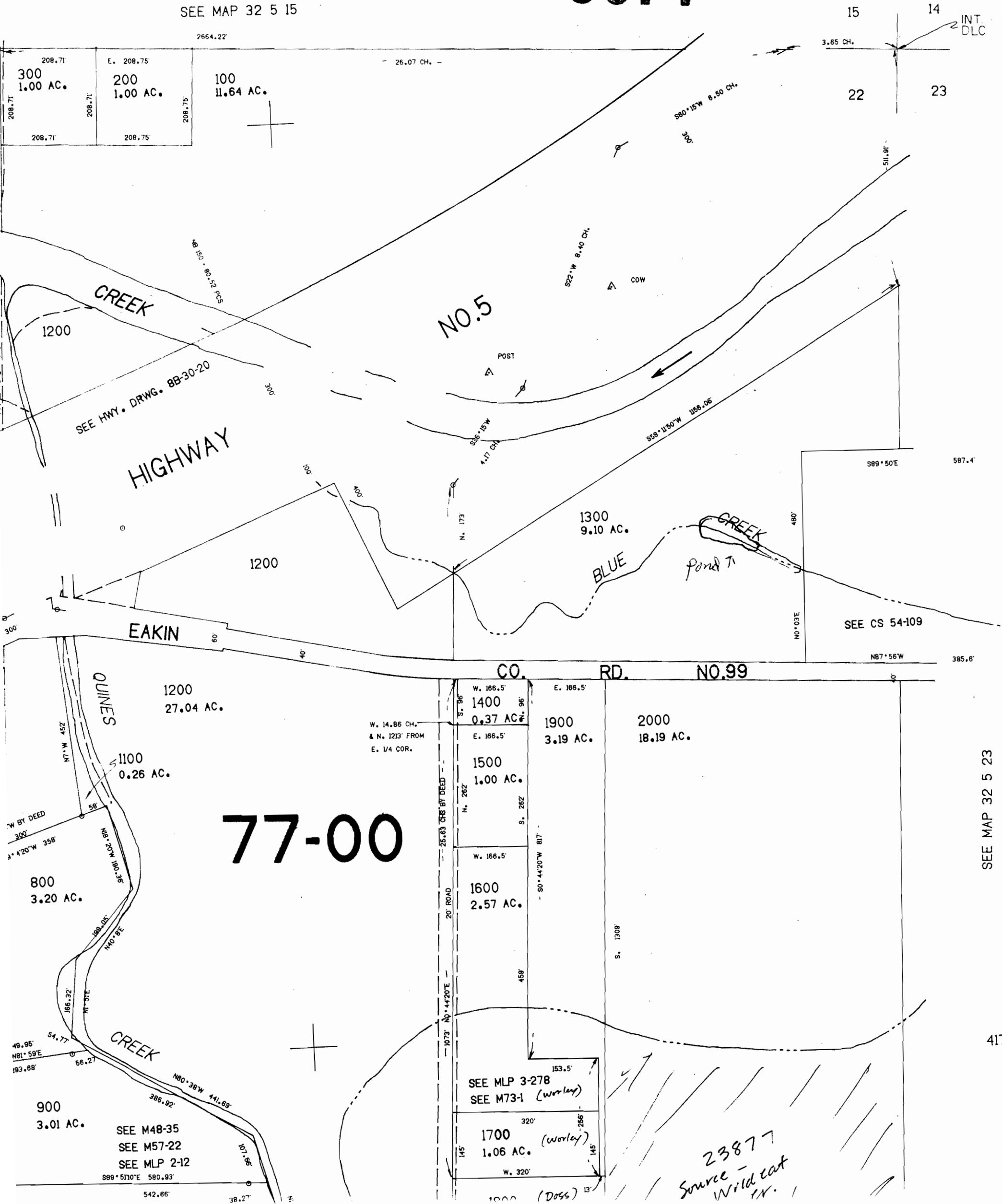
CERTIFICATE NO. _____

32 5 2

TEMPORARY DRAFT COPY

1"=200'

SEE MAP 32 5 15



77-00

SEE MAP 32 5 23

417.

SEE MLP 3-278
SEE M73-1 (Worley)

23877
Source - Wild cat
TR.