

SECTION 16 T.26S. R.6W. W.M.
DOUGLAS COUNTY

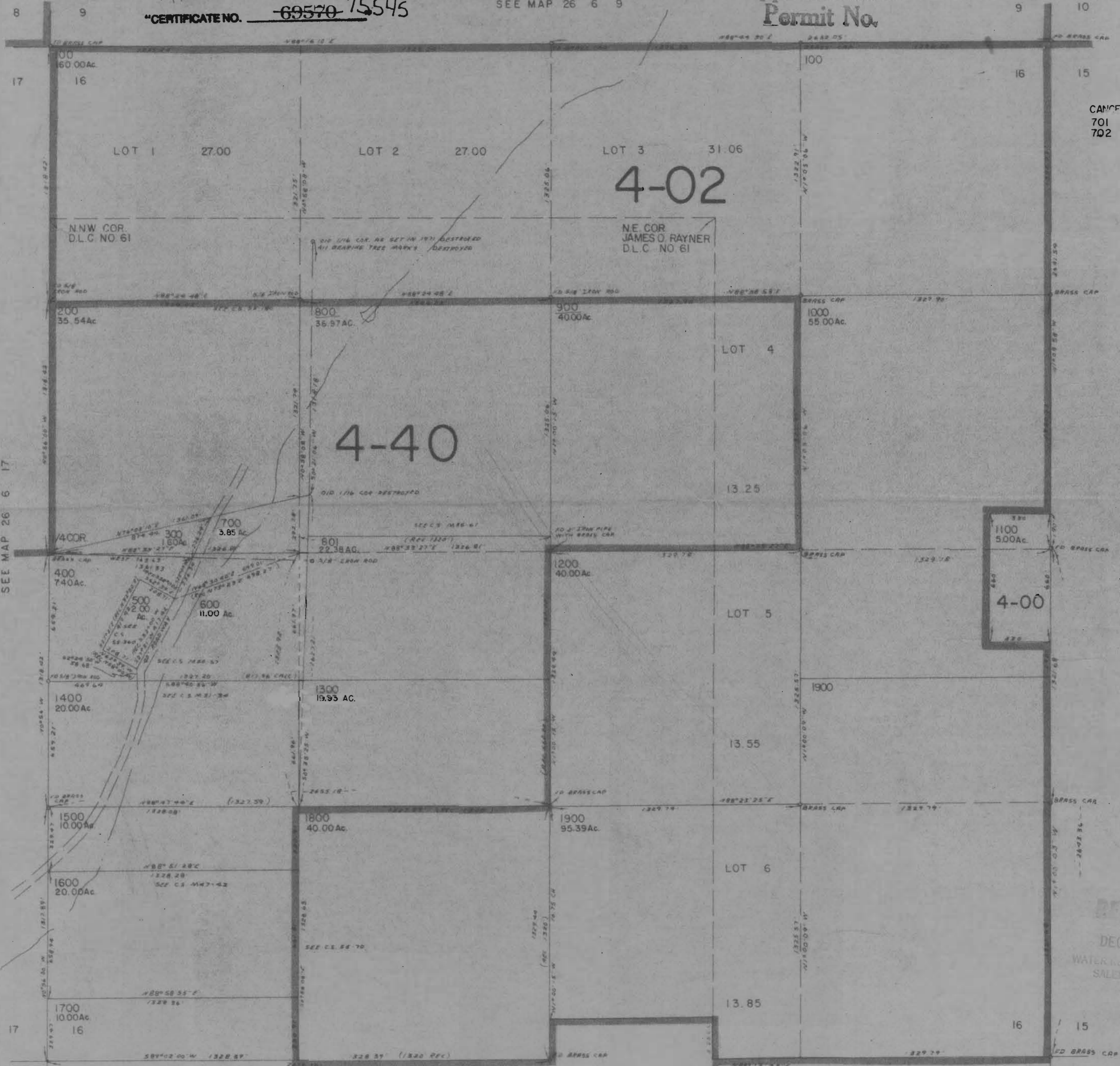
REVISED ON
7-3-91

1" = 400'

Application R-75442
"CERTIFICATE NO. ~~69570~~ 75545

SEE MAP 26 6 9

Application No R-75442
Permit No.



CANCELLED NO'S
701
702

SEE MAP 26 6 17

SEE MAP 26 6 15

SEE MAP 26 6 21

RECEIVED
DEC 14 1984
WATER...
SALEM...