

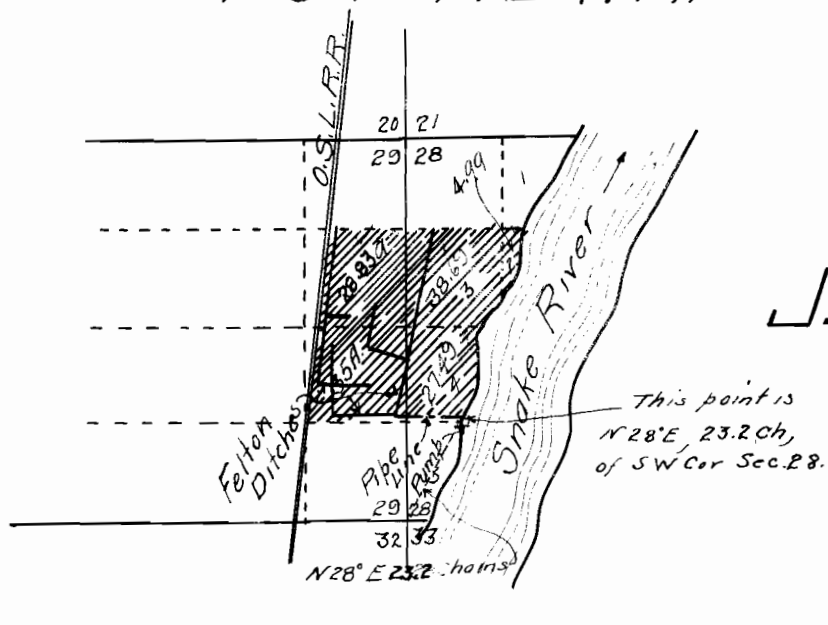
T. 19 S. R. 47 E. W.M.

APPLICATION

OF

J. A. FELTON

Scale 1" = 40 ch.



I, H. Tambllyn, of Vale, Oregon, do hereby certify that this map was made from notes taken during an actual survey made by me on May 21, 1925, and that it correctly represents the works described in the accompanying application, together with the location of streams and other ditches in the immediate vicinity

H. Tambllyn
Registered Professional Engineer

Oregon No. 1033

Jan. 1, 1926
Date of registration.

6742