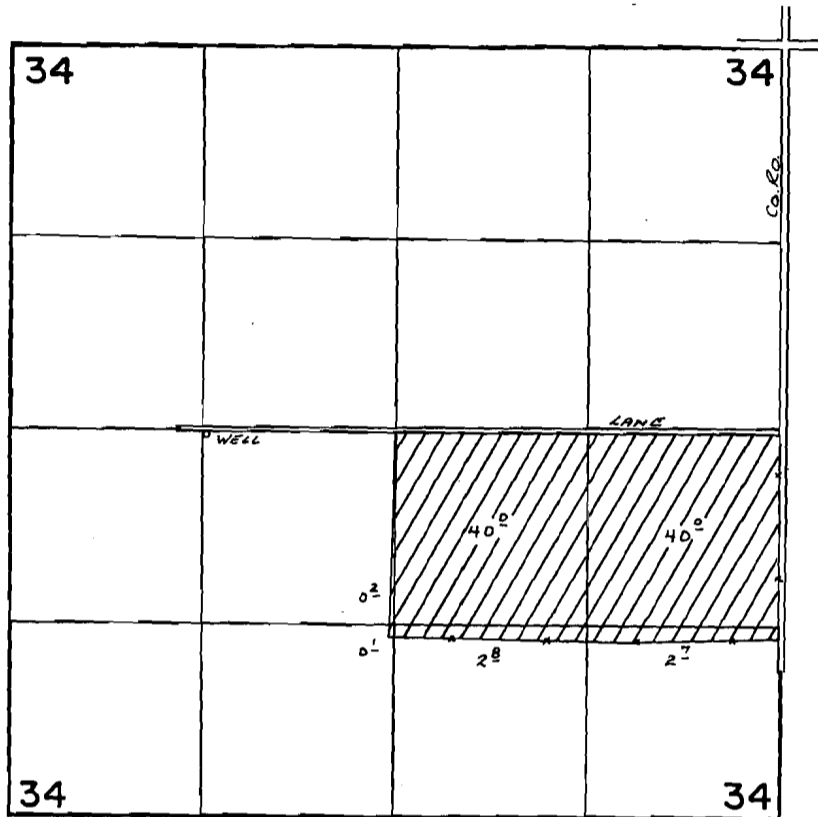


G-5512  
T7973  
46881  
75732

T.27S.,R.16E.,W.M.



WELL LOC: 36' E AND 32' S FROM THE NW COR NE 1/4 SW 1/4 SEC. 34

**FINAL PROOF SURVEY**  
UNDER

Application No. G-5703. Permit No. G-5512.  
IN NAME OF

MEARL BLEVINS

Surveyed Oct. 26, 1976, by R. G. MUCKEN.