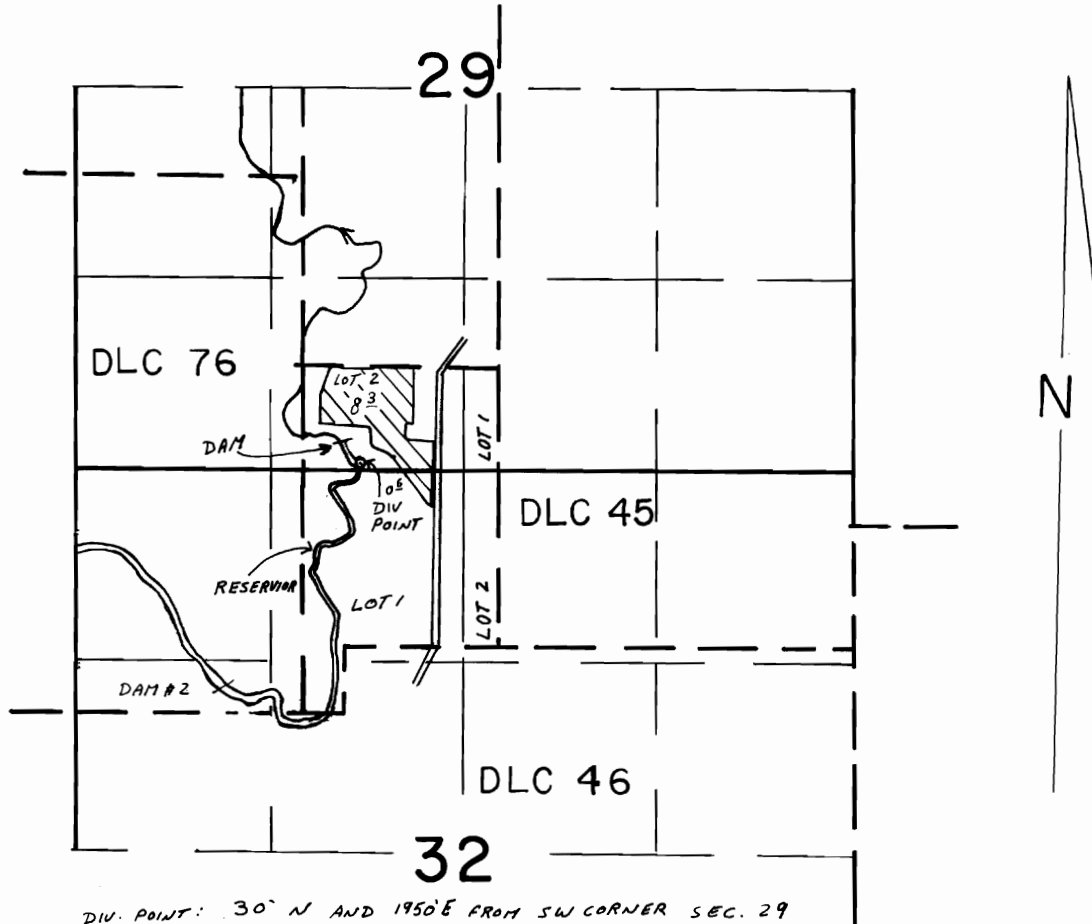


T.5S., R.4W., W.M.



DIV. POINT: 30° N AND 195° E FROM SW CORNER SEC. 29

SCALE 1" = 1320'

FINAL PROOF SURVEY

UNDER

T-4492

R-60096

R-8208

Application No. 60097 Permit No. 45350

IN NAME OF

GAIL W. PRESSNAL

Surveyed AUG 29 19 88 by Z. SALEH