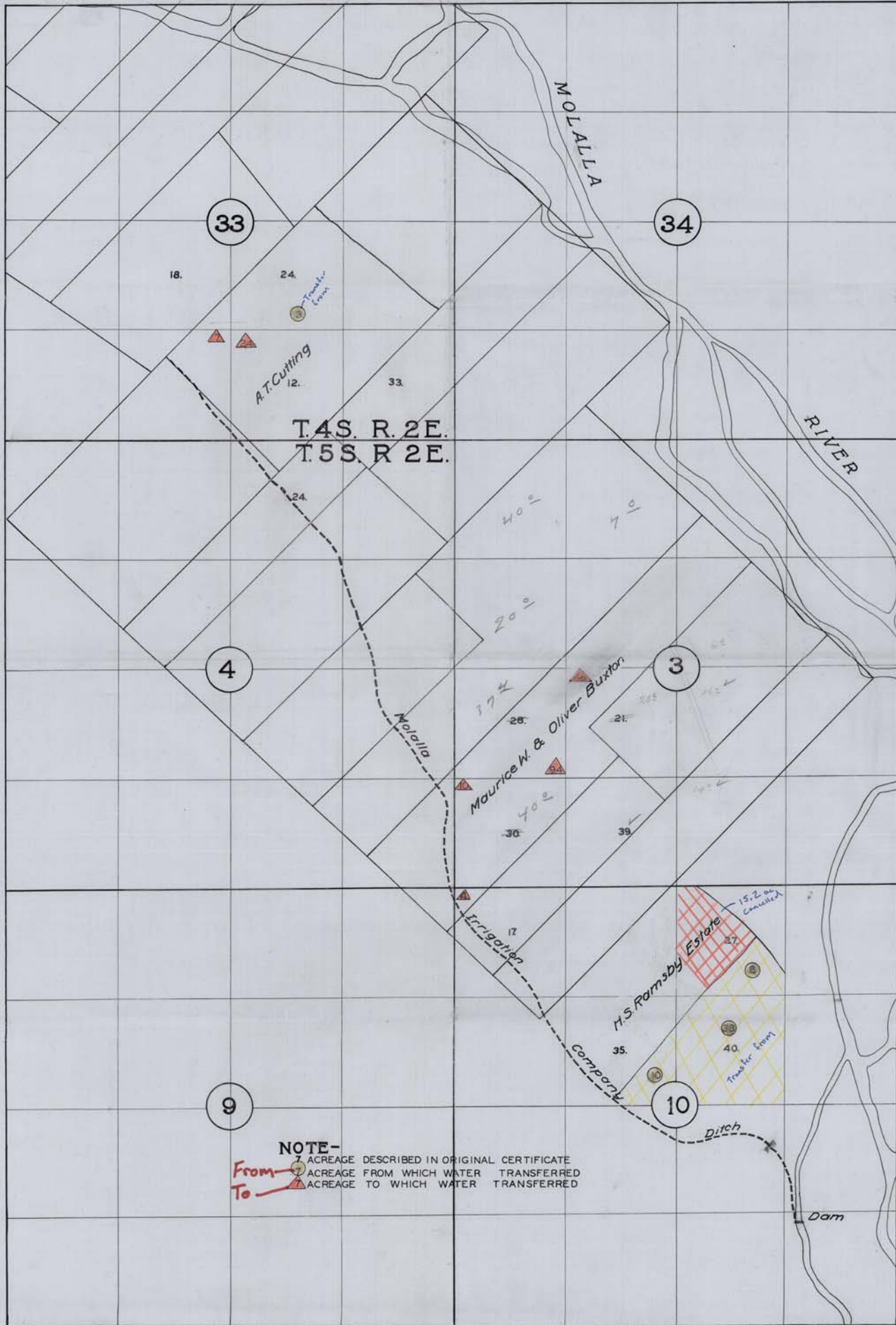


MAP
 ACCOMPANYING FOR APPLICATION
 CHANGE IN PLACE OF USE OF WATER

Ap. No. 438
 Per. No. 204



T.4S. R. 2E.
 T.5S. R. 2E.

NOTE-
 7 ACRES DESCRIBED IN ORIGINAL CERTIFICATE
 From 7 ACRES FROM WHICH WATER TRANSFERRED
 To 7 ACRES TO WHICH WATER TRANSFERRED