

**FINAL PROOF SURVEY
AND
CLAIM OF BENEFICIAL USE**

**SE 1/4, SW 1/4, SECTION 16;
NE 1/4, NW 1/4 AND SE 1/4, NW 1/4, SECTION 21
T1S, R32E, W.M.**

RECEIVED

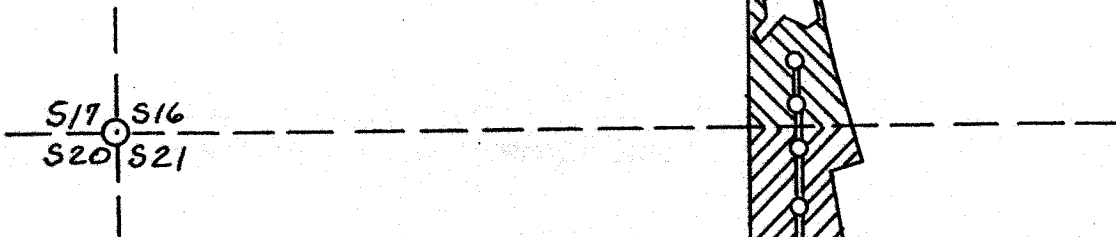
JUL - 3 1997

WATER RESOURCES DEPT.
SALEM, OREGON

G-12072

AREA BENEFICIALLY IRRIGATED

SE 1/4, SW 1/4 S16 : 1.55 Ac.
NE 1/4, NW 1/4 S21 : 8.57 Ac.
SE 1/4, NW 1/4 S21 : 1.83 Ac.
TOTAL: 11.95 Ac. SW 1/4, SW 1/4



LEGEND

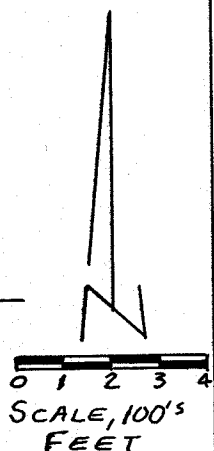
- = AREA UNDER IRRIGATION SE 1/4, SW 1/4 S16
- = AREA UNDER IRRIGATION NE 1/4, NW 1/4 S21
- = AREA UNDER IRRIGATION SE 1/4, NW 1/4 S21
- = SECTION CORNER
- = 1/16TH SECTION LINES
- = WELL
- = BURIED DISTRIBUTION LINES
- = RISER

NW 1/4,
NW 1/4

← WELL - LOCATED 300'
SOUTH & 1,515' EAST
OF SECTION CORNER
¹⁷¹⁶
₂₀₂₁
NE 1/4, NW 1/4

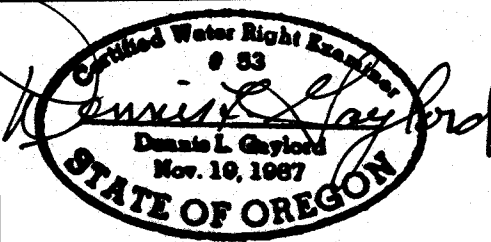
SW 1/4,
NW 1/4

SE 1/4, NW 1/4



APPLICATION G-13557 PERMIT G-12072

THIS MAP IS PREPARED FOR THE EXPRESS PURPOSE TO SHOW WATER APPROPRIATION AND USE. IT IS NOT INTENDED TO SHOW OR LOCATE PROPERTY OWNERSHIP LINES.



RENEWS 6/30/1997

DENNIS L. GAYLORD
4107 S.W. LAKE DRIVE
PENDLETON, OR 97801
503-276-6260
CWRE No. 53 8/95