

T. 2S., R.1E., W.M.
T. 3S., R.1E., W.M.

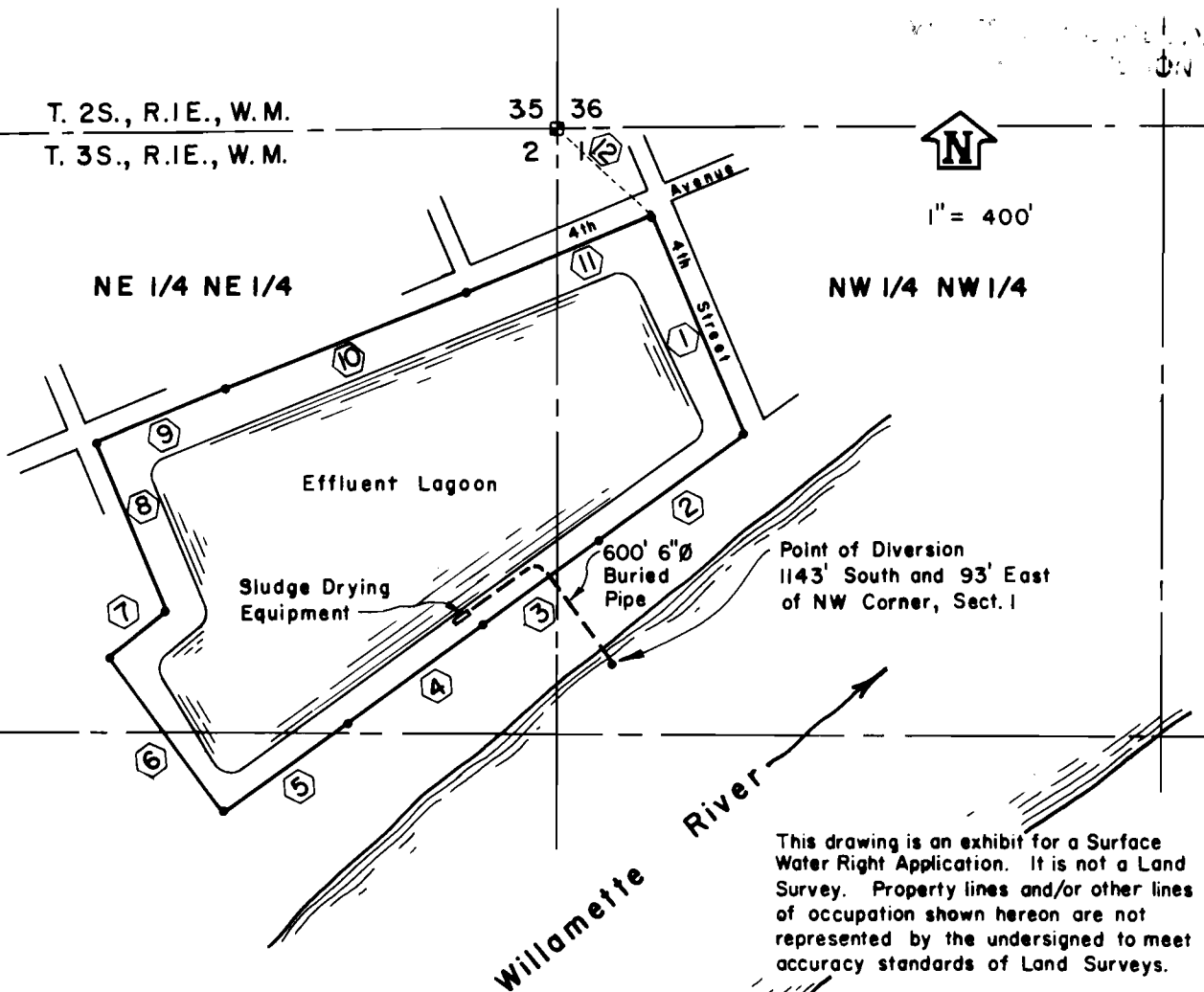
35 36
2



1" = 400'

NE 1/4 NE 1/4

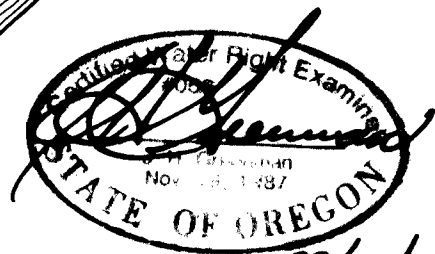
NW 1/4 NW 1/4



Point of Diversion
1143' South and 93' East
of NW Corner, Sect. 1

This drawing is an exhibit for a Surface Water Right Application. It is not a Land Survey. Property lines and/or other lines of occupation shown hereon are not represented by the undersigned to meet accuracy standards of Land Surveys.

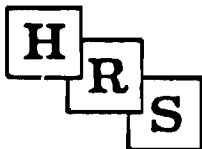
- ① S 22° 23' 47" E, 518.14'
- ② S 54° 19' 02" W, 398.49'
- ③ S 54° 15' 43" W, 309.05'
- ④ S 54° 21' 06" W, 385.69'
- ⑤ S 54° 18' 14" W, 329.85'
- ⑥ N 35° 13' 00" W, 422.32'
- ⑦ N 53° 11' 00" E, 170.22'
- ⑧ N 22° 25' 08" W, 401.27'
- ⑨ N 67° 35' 38" E, 299.00'
- ⑩ N 68° 37' 53" E, 567.00'
- ⑪ N 67° 36' 15" E, 448.00'
- ⑫ S 49° 15' 58" E, 276.90'



89/12/ps

Application No. 69865

Permit No. 50661



**HANER, ROSS &
SPORSEEN, INC.**
15 S.E. 82ND DR.
GLADSTONE, OREGON 97027

**SURFACE WATER RIGHT
FINAL PROOF MAP**