

RECEIVED

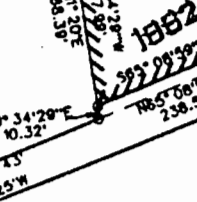
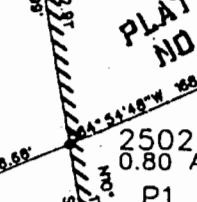
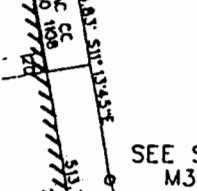
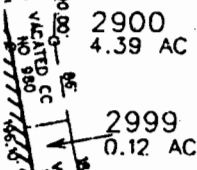
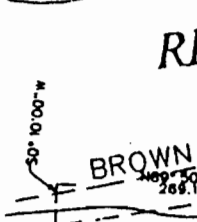
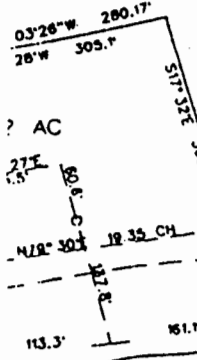
JUN 16 1998

AUG 11 1999

WATER RESOURCES DEPT.
SALEM, OREGON

WATER RESOURCES DEPT.
SALEM, OREGON

34



GLO MEANDER
S LINE GEORGE HANNAN. DLC NO 42
N81°45'E 85'
N82°30'E 9.40 CH LINE 33'
EAST 1.22 CH

NORTH UMPQUA RIVER

DLC NO 54
23 SO. CH. 850510
N69°E 8.90 CH EAST

BROWN 0520
N77°15'E
289.10

GARDEN

VALLEY

POND

POND A

POND B

PART
PLAT
NO 2

1982-88
P1

12
3100

CO.
RD.

VACATED
97-3128
NO. 6

SEE MAP 26 6 34

