

T. 27 S., R. 16 E., W.M.

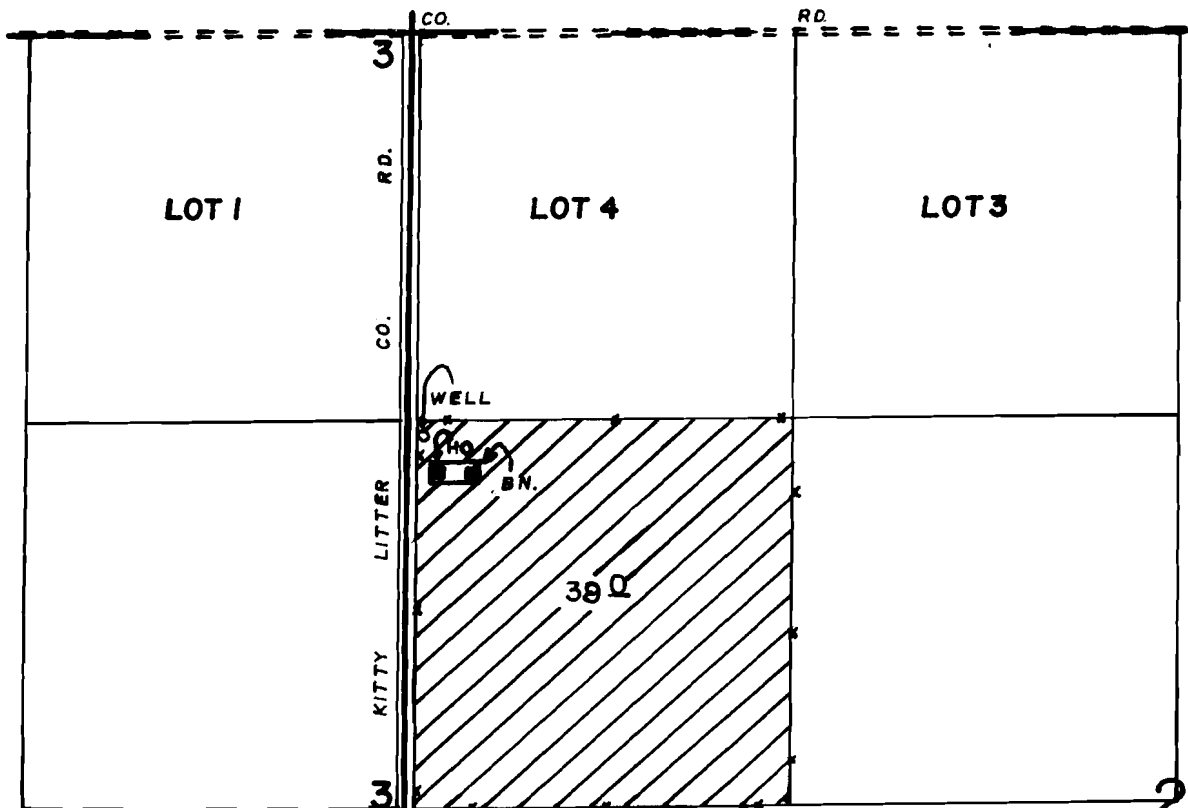
RECEIVED

FEB - 8 1994

WATER RESOURCES DEPT.  
SALEM, OREGON

G10705

7607A  
76484



WELL, LOC: 50'S & 50' E FROM NW COR. OF SW 1/4, NW 1/4, SEC 2.

SCALE: 1" = 660'

### FINAL PROOF SURVEY

UNDER

Application No. G-11256 Permit No. G-10705  
IN NAME OF

GEORGE & LYNNE HALEY

Surveyed AUG 24, 1993, by R.N. SUTTERFIELD