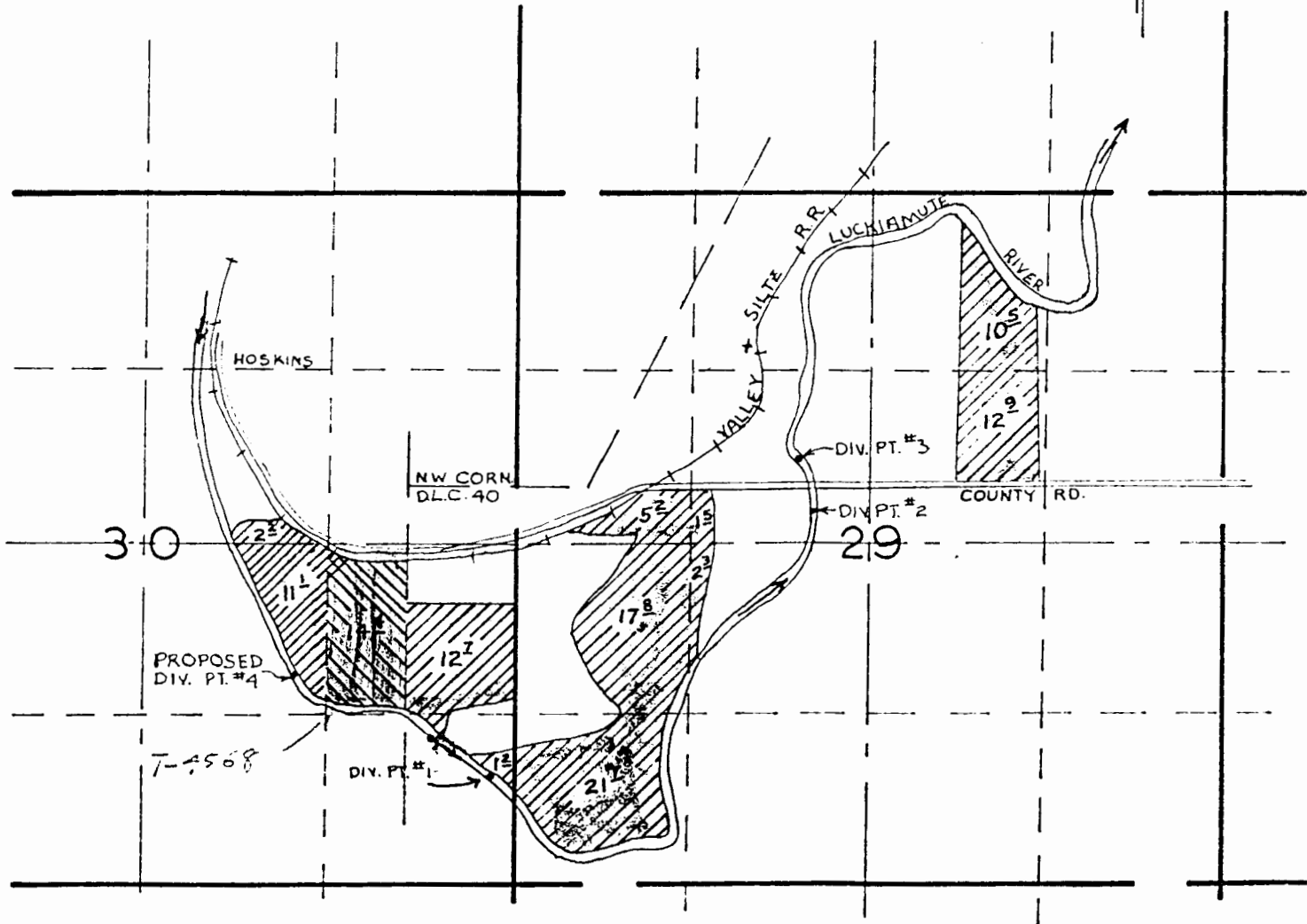
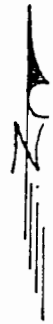


RECEIVED

T-456

JUL 22 1980
WATER RESOURCES DEPT.
SALEM, OREGON

Transfer To



GRACEN L. BUSH

The proposed Div. Pt. #4 is located 1440 S and 840 W from the N.W. corner of D.L.C. 40 within the N.W. 1/4 SE 1/4 of section 30 T10S R6W in Benton County. Div. Pt. #1 #2 and #3 are established in previous rights.

scale: 4" = 1 Mile

~~REDACTED~~ T-4568

~~REDACTED~~ T-4569