

Application No. 11583
Permit No. 8585

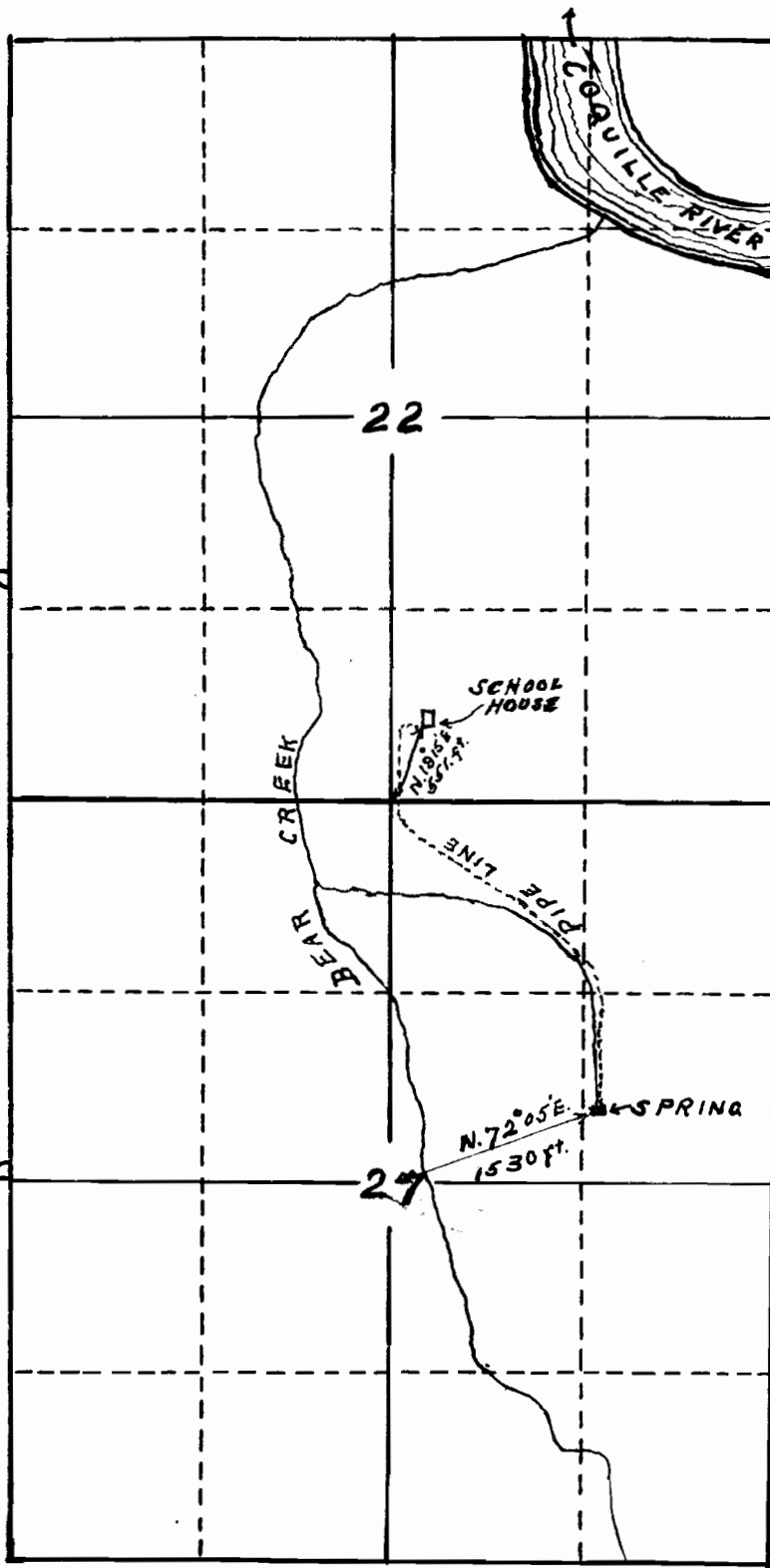


— Scale —
— 1 Inch = 20 Chains. —

I, C.S. McCulloch, of Bandon, Oregon,
do hereby certify that this map was made
from notes taken during an actual survey
made by me on March 8th 1928,
and that it correctly represents the
work described in the accompanying
application, together with the location
of streams and other ditches in the
immediate vicinity.

Charles S. McCulloch
Registered Prof. Engineer.
Oregon No. 620.
Dec. 8th 1919.

Charles S. McCulloch



T. 28 S.
R. 14 W.