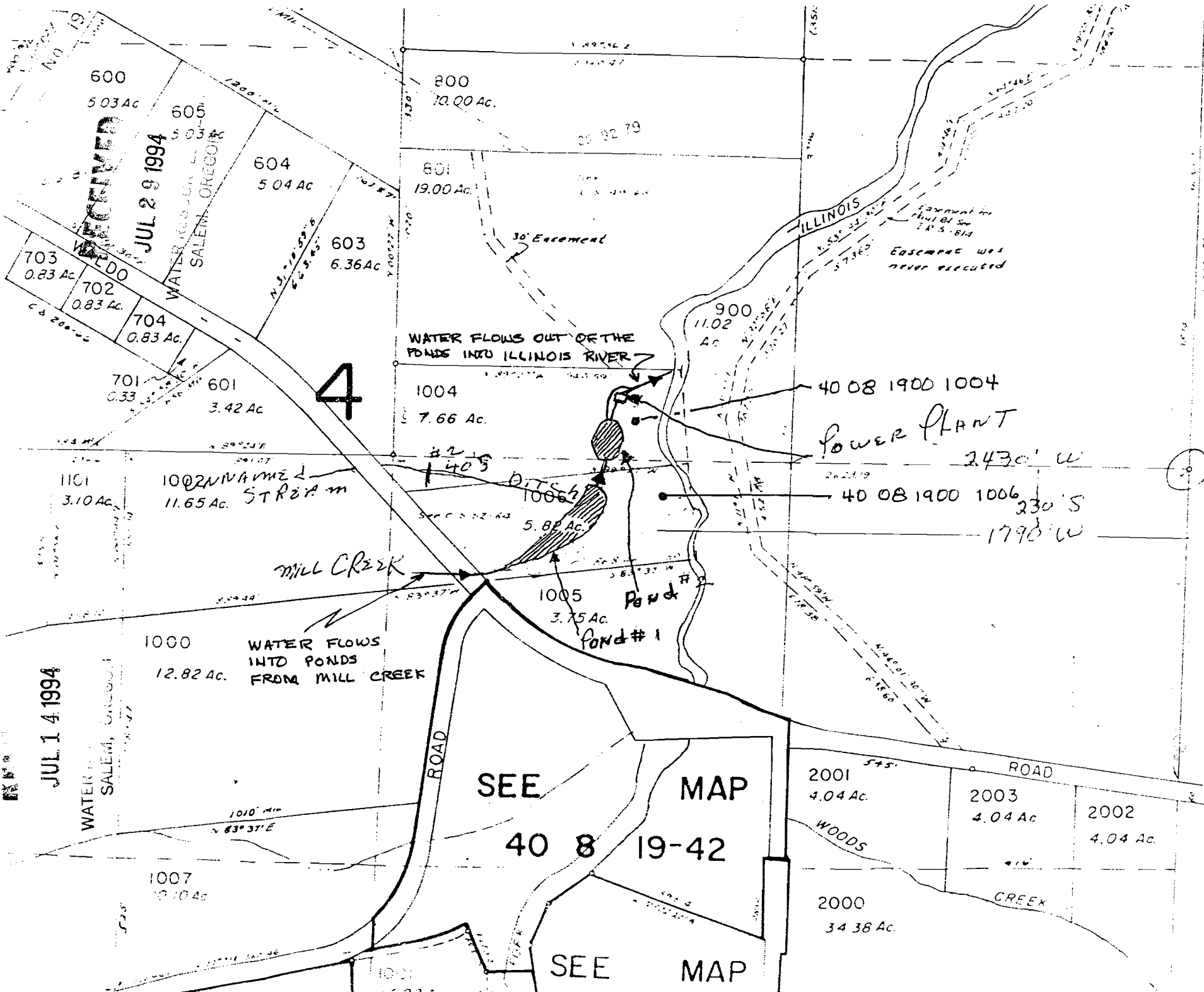


Tu
R.
Sec
1" = 4'



RECEIVED
JUL 29 1994
WATER DIVISION
SALEM, OREGON

4

JUL 14 1994
WATER DIVISION
SALEM, OREGON

SEE MAP
40 8 19-42
SEE MAP

POWER PLANT

(8) E of C

78510
69191
R74324

SEE MAP 40 8 20
SEE MAP 40 8 20
SEE MAP 40 8 20

Easement for
Shul Bl Sw
7 R'S - B14
Easement was
never executed

1002N NAME 2
11.65 Ac. STREAM

WATER FLOWS
INTO PONDS
FROM MILL CREEK

WATER FLOWS OUT OF THE
PONDS INTO ILLINOIS RIVER

POND # 1

5.88 Ac.

3.75 Ac.

ROAD

ROAD

2001
4.04 Ac.

2003
4.04 Ac.

2002
4.04 Ac.

2000
34.38 Ac.

CREEK

WOODS

1010' MIN
83° 37' E

1007
12.10 Ac.

1001
6.92 Ac.

SEE MAP

SEE MAP 40 8 20

SEE MAP 40 8 20

1" = 4'

No Final Proof Map available

No Permit Map available