

Amended



LAND MARKERS, INC.

PAGE 2 OF 2

P.O. BOX 15090

2775 25th ST. S.E.  
PH. (503) 581-0911

DATE: AUG. 03, 2000  
JOB NO. 00-084

SALEM, OR 97309  
FAX (503) 581-5343

# WATER RIGHTS TRANSFER MAP

APPLICATION NO. 45134

RECEIVED

WEST 1/4 CORNER  
SECTION 18

SCHNEIDER ROAD R/W = 80'

AUG 04 2000

WATER RESOURCES DEPT.  
SALEM, OREGON

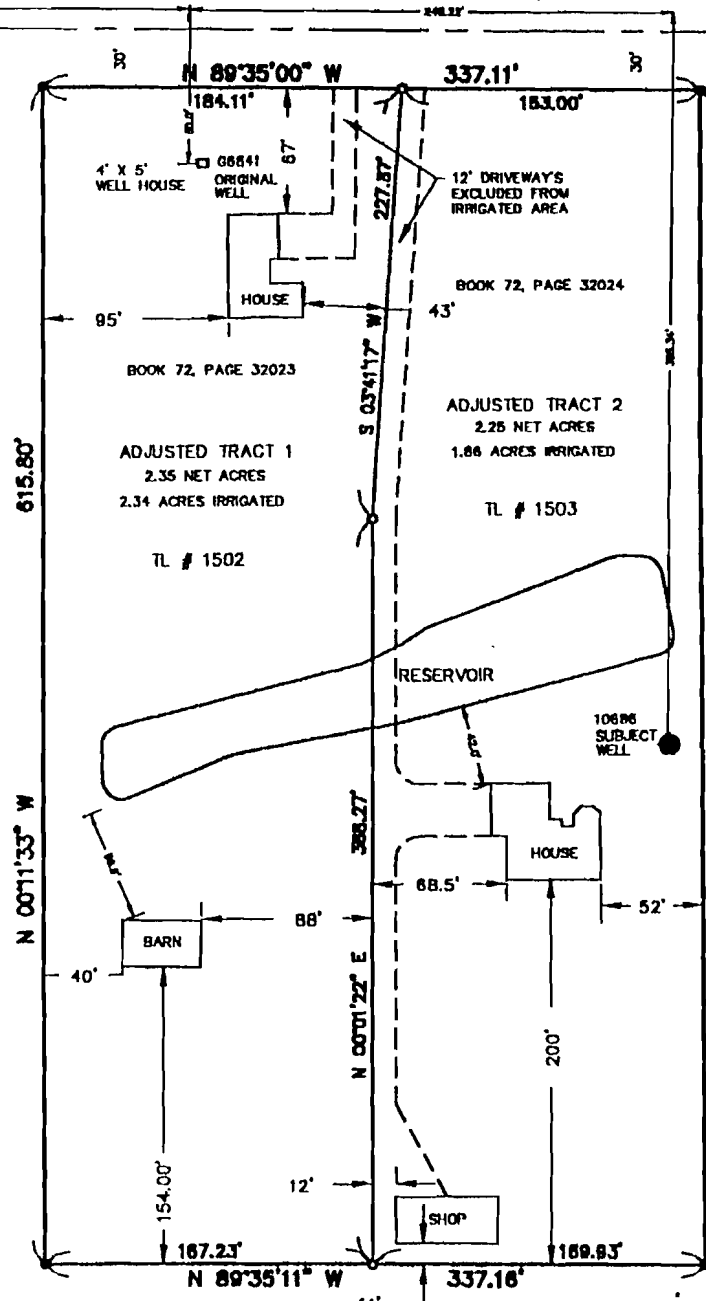
### AREAS TO BE REMOVED FROM IRRIGATED LAND

TL # 1502	TL # 1503
ROADWAY 0.04 AC.	ROADWAY 0.22 AC.
HOUSE 0.04 AC.	HOUSE 0.05 AC.
BARN 0.02 AC.	SHOP 0.03 AC.
<b>TOTAL 0.10 AC.</b>	<b>TOTAL 0.30 AC.</b>

TL 1501	0.10 AC.
TL 1603	0.30 AC.
<b>TOTAL</b>	<b>0.40 AC.</b>

<b>TOTAL AREA</b>	<b>4.6 AC.*</b>
<b>TOTAL NON-IRRIGATED</b>	<b>0.40 AC.</b>
<b>TOTAL IRRIGATED</b>	<b>4.20 AC.</b>

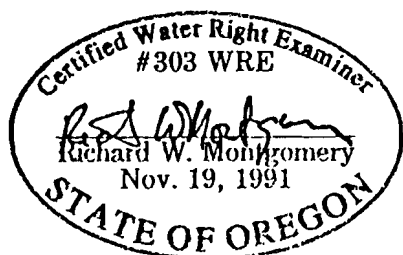
NOTE: RESERVOIR EXCLUDED FROM COMPS.



COPY



SCALE: 1" = 100'



EXPIRES: 12/31/2000

This is not a land survey. No monuments set. This map does not guarantee that any particular use may be made of the property illustrated hereon. Parties should check with the appropriate city or county planning department to verify approved uses.