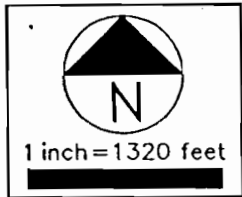
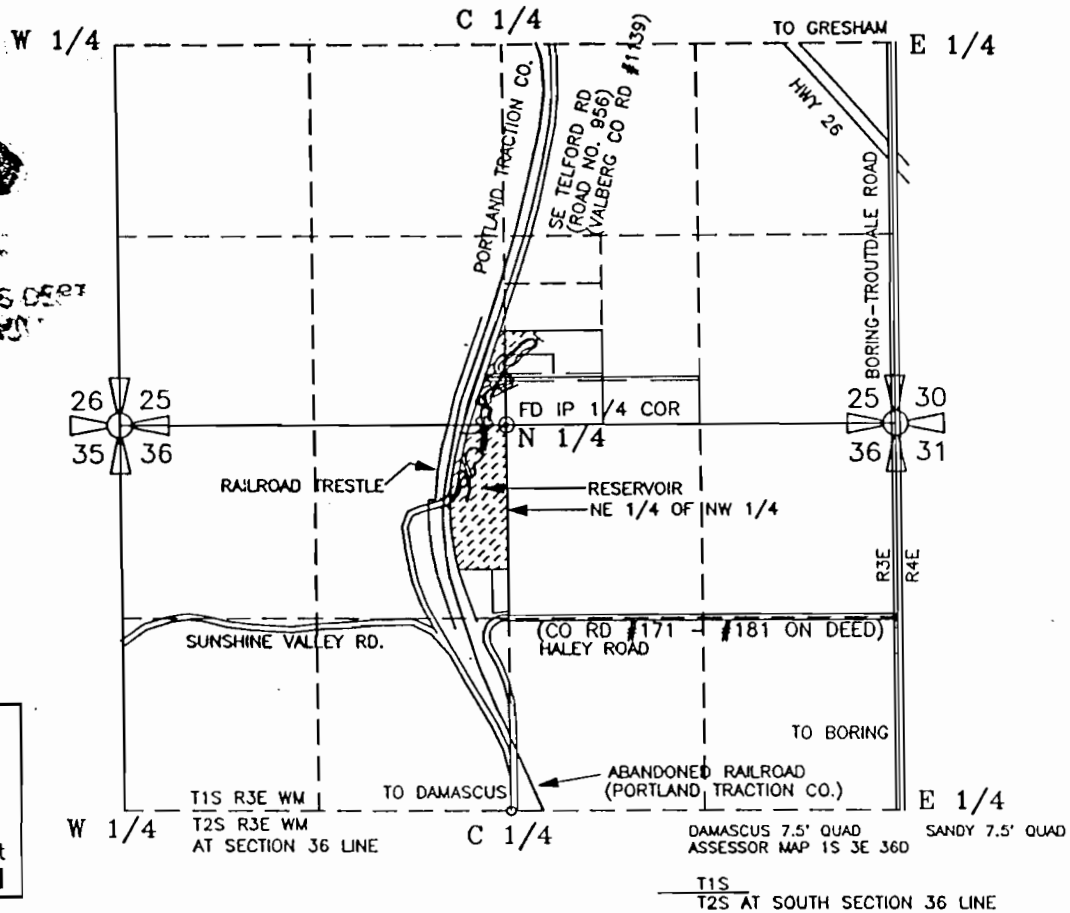
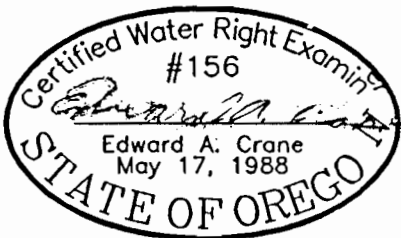


NE 1/4 OF THE NW 1/4 OF SECTION 36
T1S & R3E OF THE WM
CLACKAMAS COUNTY, OREGON



RESERVOIR SURFACE AREA & VOLUME
RESERVOIR;
SURFACE AREA = 14,049 SQ FT (0.322 AC)
MAXIMUM VOLUME = 45,660 CF (1.05 AC FT)

RESERVOIR DAM IS LOCATED 175' SOUTH & 167' WEST OF THE NORTH 1/4 CORNER OF SECTION 36, THE STORAGE RESERVOIR BEING LOCATED IN THE NE 1/4 OF NW 1/4 OF SECTION 36, T1S, R3E WM, CLACKAMAS COUNTY, OREGON



RESERVOIR STORAGE APPLICATION

PREPARED BY EDWARD A. CRANE, CWRE

SURVEYED JULY 14, 1993
BY EDWARD A. CRANE, CWRE

PREPARATION OF THIS MAP WAS FOR THE PURPOSE OF IDENTIFYING THE LOCATION OF THE WATER RIGHTS ONLY AND HAS NO INTENT TO PROVIDE DIMENSIONS OR LOCATION OF PROPERTY OWNERSHIP LINES.

DATE
JULY 1993
PROJECT NO.
030 001



Crane Engineering Associates, Inc.
CIVIL ENGINEERING CONSULTANTS
SUITE 604
12042 SE SUNNYSIDE ROAD
CLACKAMAS, OREGON 97015
BUS: (503) 698-7747
MOB: (503) 789-7617
FAX: (503) 698-4851

APPLICATION FOR PERMIT NUMBER R-73566
PERMIT NUMBER 668 IN THE NAME OF:
D. E. & ALINE CAMPBELL

FIGURE
1/2

NE 1/4 OF THE NW 1/4 OF SECTION 36
T1S & R3E WM, CLACKAMAS CO. OREGON

RES. DAM IS 175' SOUTH & 167' WEST OF THE N 1/4
COR. OF SEC. 36, T1S, R3E OF WM, CLACKAMAS CO. OR.

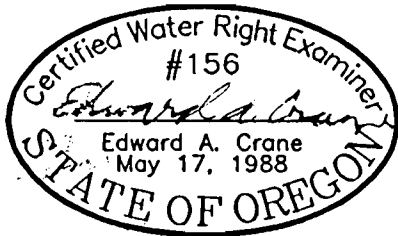
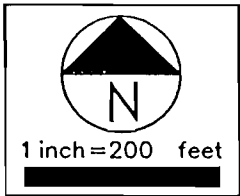
PREPARATION OF THIS MAP WAS FOR THE PURPOSE
OF IDENTIFYING THE LOCATION OF THE WATER RIGHTS
ONLY AND HAS NO INTENT TO PROVIDE DIMENSIONS
OR LOCATION OF PROPERTY OWNERSHIP LINES.

RECEIVED

AUG 06 1993

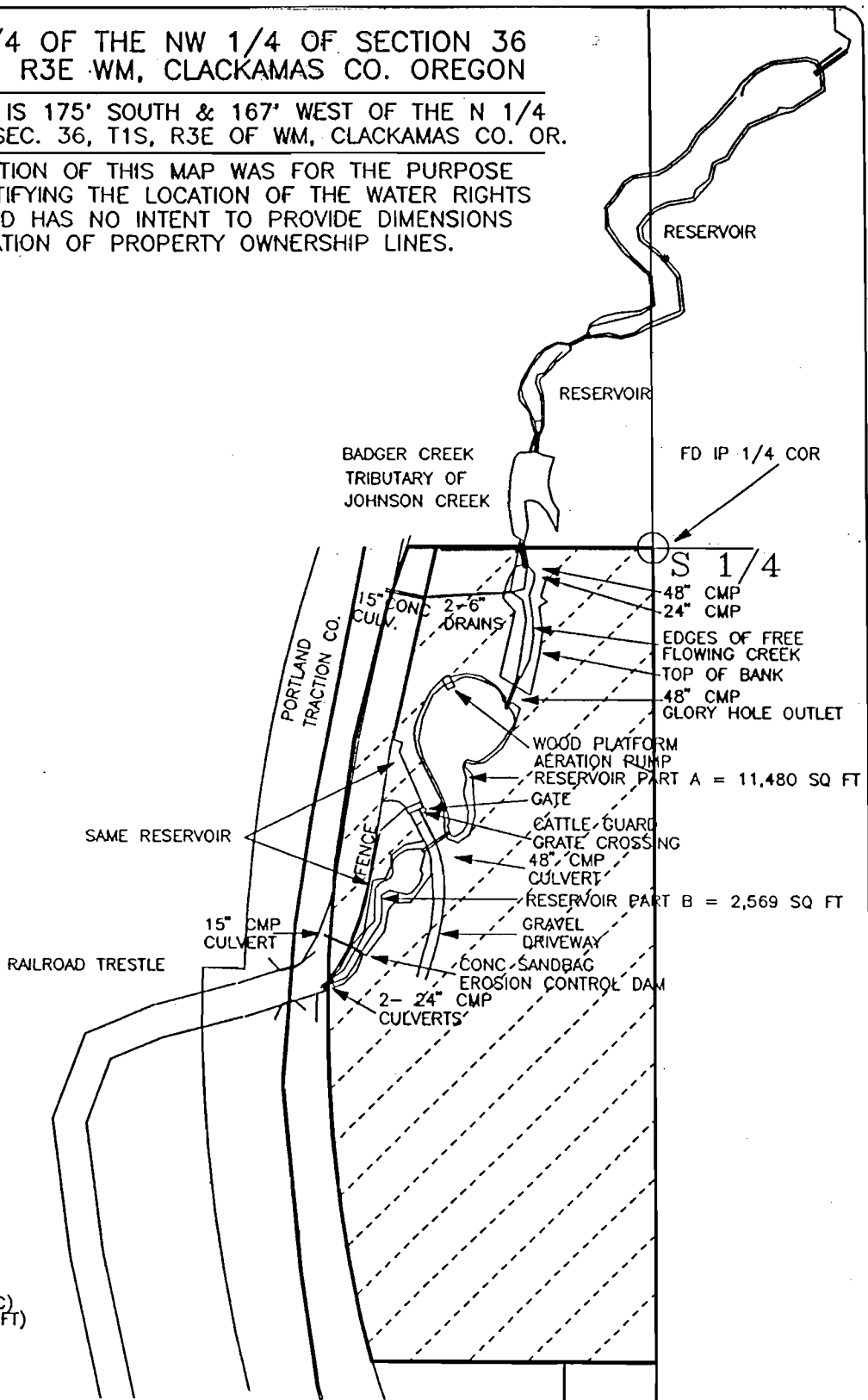
WATER RESOURCES DEPT
SALEM, OREGON

NE 1/4 OF NW 1/4
TOTAL ACRES = 7.40 AC
IRRIGATED ACRES = 0.00 AC



RESERVOIR SURFACE AREA & VOLUME
RESERVOIR PART A & B:
SURFACE AREA = 14,049 SQ FT (0.322 AC)
MAXIMUM VOLUME = 45,660 CF (1.05 AC FT)

SURVEYED JULY 14, 1993
BY EDWARD A. CRANE, CWRE



CA:\P\1993\001\CAMPBELL.DWG

DATE
JUNE 1993

PROJECT NO.
030 001



Crane Engineering Associates, Inc.
CIVIL ENGINEERING CONSULTANTS
SUITE 604
12042 SE SUNNYSIDE ROAD
CLACKAMAS, OREGON 97015
BUS: (503) 698-7747
MOB: (503) 789-7617
FAX: (503) 698-4851

APPLICATION FOR PERMIT NUMBER R-73566

PERMIT NUMBER ~~1566~~ IN THE NAME OF:

D. E. & ALINE CAMPBELL

FIGURE

2/2