

# Claim of Beneficial Use

Application # 48484  
Permit # 35425



North

Scale: 1" = 1320'



Public Land Survey System (PLSS) corners and irrigated crop circles were located using real-time, Differential GPS (DGPS) methods. NAD27 coordinates were developed using a Trimble ProXL Receiver hardwired to a Trimble ProBeacon. Verified sub-meter positions were collected, by incorporating correction broadcasts from the U.S. Coast Guard Continuously Operating Reference Station (CORS) in Appleton, Washington, with raw satellite data. Data from the Bureau of Land Management's geographic coordinate data base (GCDB) was combined with field surveyed positions of existing PLSS corners, to develop 1/16 corner positions consistent with the "Manual of Instructions for the Survey of the Public Lands of the United States", 1973 edition.

Point of diversion located 1657 feet north and 2166 feet west of SE corner, section 36, township 3 north, range 22 east. Source of water is John Day Reservoir on the Columbia River.

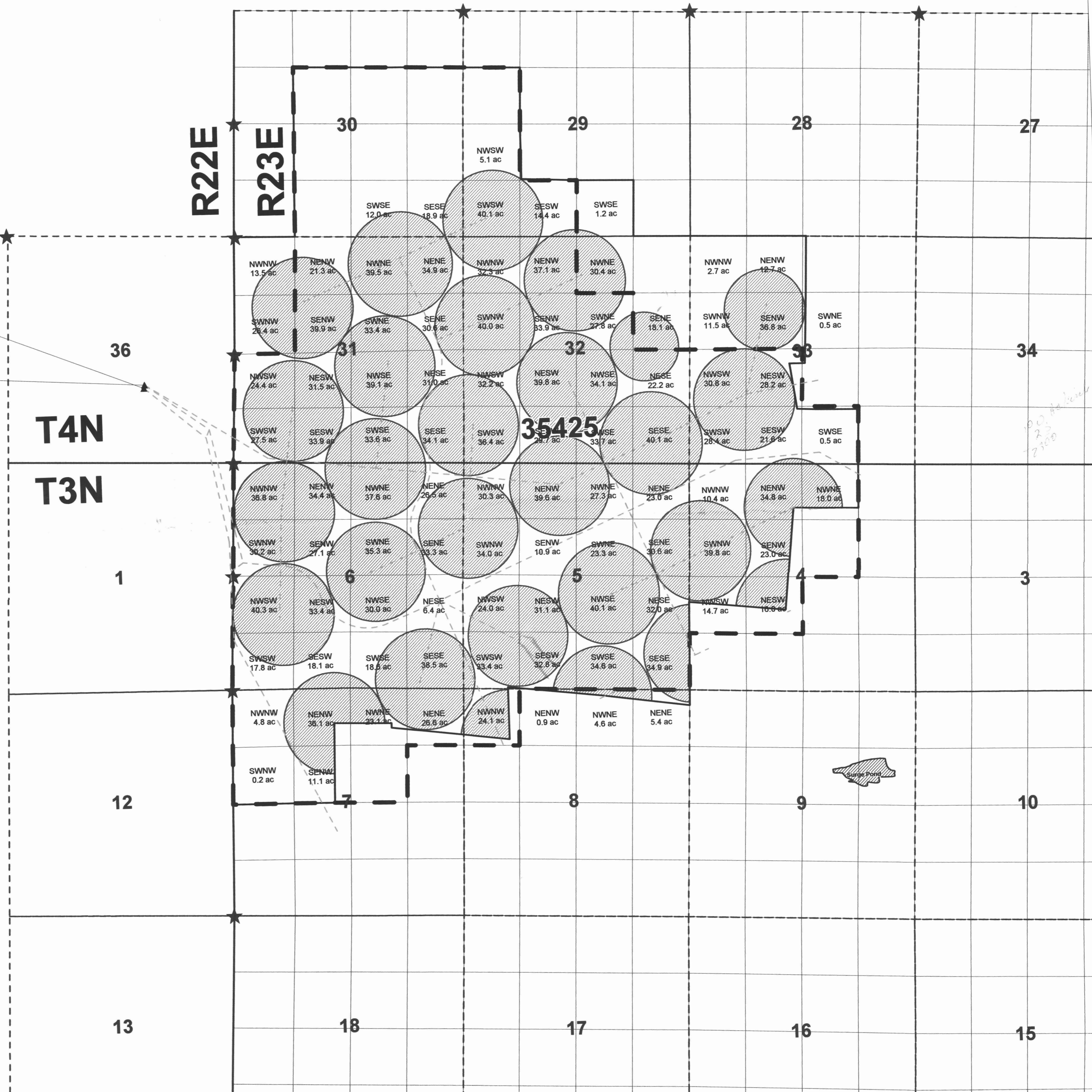
Pipe locations and diameters are approximate based on owners map. Mainline to pivot pipes are typically 10 inches in diameter with 8 inch diameter minimum.

This map was prepared for the purpose of identifying the location of a water right only and is not intended to provide legal dimensions or location of property ownership lines.

## Legend

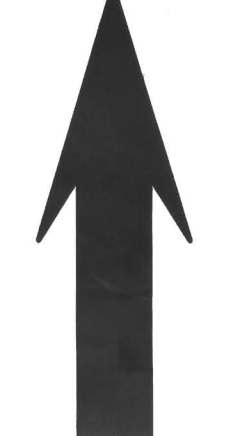
- Place of use
- Monuments located
- Original permit area
- Permit area
- Section
- Quarter quarter section
- Township/Range
- Irrigation pipe
- Point of diversion
- Booster station

P.O.D.  
River P.S.



# System Layout Map

Boeing Agri-Industrial Co.



North

Scale: 1" = 2,000'

Public Land Survey System (PLSS) corners and irrigated crop circles were located using real-time, Differential GPS (DGPS) methods. NAD83 coordinates were developed using a Trimble ProXL Receiver hand-carry to a Trimble ProBeacon. Verified sub-meter positions were collected, by incorporating correction broadcasts from the U.S. Coast Guard Continuously Operating Reference Station (CORS) in Appleton, Washington, with raw satellite data. Data from the Bureau of Land Management's geographic coordinate data base (GCCB) was combined with field surveyed positions of existing PLSS corners, to develop 1/16 corner positions consistent with the "Manual of Instructions for the Survey of the Public Lands of the United States", 1973 edition. Point of diversion located 1657 feet north and 2166 feet west of SE corner, section 36, township 3N, range 22E. Source of water is John Day Reservoir on the Columbia River.

Pipe locations and diameters are approximate based on owners map. Mainline to pivot pipes are typically 16 inches in diameter with 8 inch diameter minimum.

Only circles which were surveyed are identified on the map.

This map was prepared for the purpose of identifying the location of a water right only and is not intended to provide legal dimensions or location of property ownership lines.

## Legend

- Place of use
- Monuments located
- Permit area
- Original permit
- Section
- Quarter quarter section
- Township/Range
- Irrigation pipe
- Point of diversion
- Booster station

