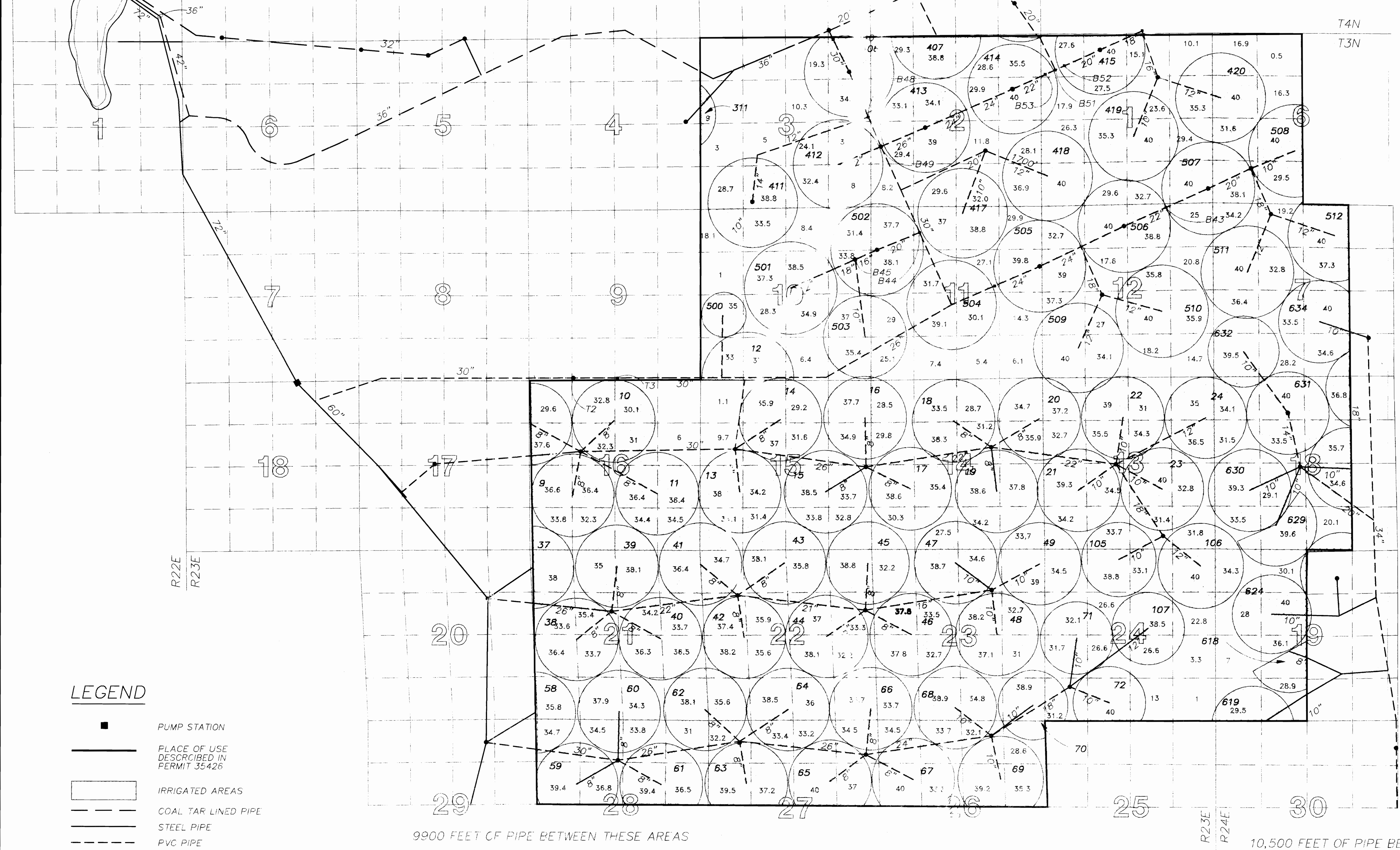


P.O.D. NO.2  
BOEING PUMPS LOCATED 1710 FT NORTH , 1970 FT WEST  
FROM THE SOUTHEAST CORNER SECTION 36. TAGGARES  
PUMPS LOCATED 1730 FT NORTH AND 2140 FT WEST FROM  
THE SOUTHEAST CORNER SECTION 36

BACKWATER OF JOHN DAY RESERVOIR



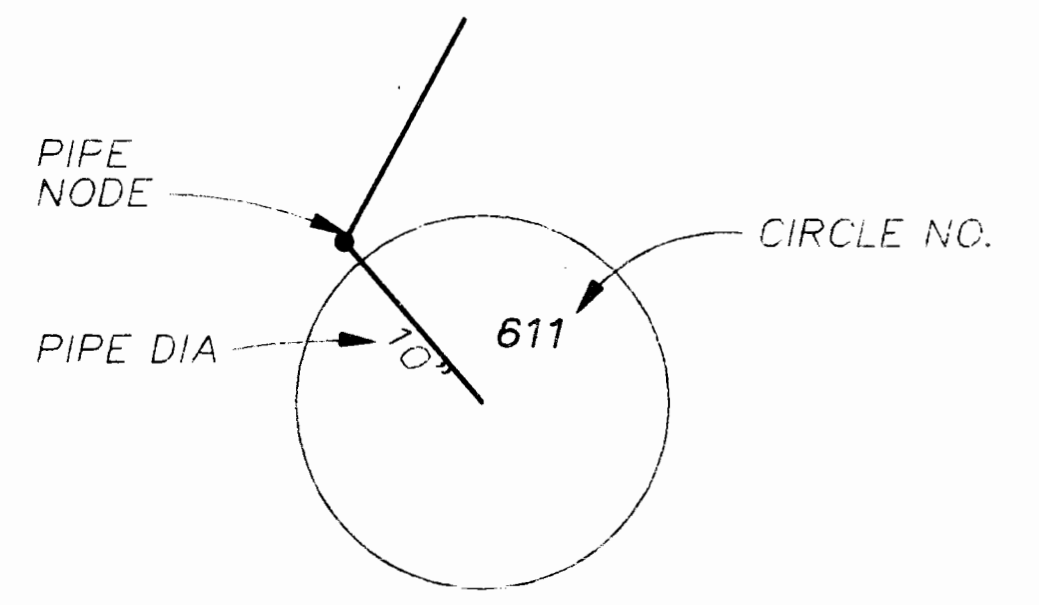
SCALE: 1"=1320'

LOCATION OF PIVOT PADS (CENTER OF CIRCLES)

PIVOT#	TOWNSHIP	RANGE
1	33N	R23E
2	33N	R23E
3	33N	R23E
4	33N	R23E
5	33N	R23E
6	33N	R23E
7	33N	R23E
8	33N	R23E
9	33N	R23E
10	33N	R23E
11	33N	R23E
12	33N	R23E
13	33N	R23E
14	33N	R23E
15	33N	R23E
16	33N	R23E
17	33N	R23E
18	33N	R23E
19	33N	R23E
20	33N	R23E
21	33N	R23E
22	33N	R23E
23	33N	R23E
24	33N	R23E
25	33N	R23E
26	33N	R23E
27	33N	R23E
28	33N	R23E
29	33N	R23E
30	33N	R23E
31	33N	R23E
32	33N	R23E
33	33N	R23E
34	33N	R23E
35	33N	R23E
36	33N	R23E
37	33N	R23E
38	33N	R23E
39	33N	R23E
40	33N	R23E
41	33N	R23E
42	33N	R23E
43	33N	R23E
44	33N	R23E
45	33N	R23E
46	33N	R23E
47	33N	R23E
48	33N	R23E
49	33N	R23E
50	33N	R23E
51	33N	R23E
52	33N	R23E
53	33N	R23E
54	33N	R23E
55	33N	R23E
56	33N	R23E
57	33N	R23E
58	33N	R23E
59	33N	R23E
60	33N	R23E
61	33N	R23E
62	33N	R23E
63	33N	R23E
64	33N	R23E
65	33N	R23E
66	33N	R23E
67	33N	R23E
68	33N	R23E
69	33N	R23E
70	33N	R23E
71	33N	R23E
72	33N	R23E
73	33N	R23E
74	33N	R23E
75	33N	R23E
76	33N	R23E
77	33N	R23E
78	33N	R23E
79	33N	R23E
80	33N	R23E
81	33N	R23E
82	33N	R23E
83	33N	R23E
84	33N	R23E
85	33N	R23E
86	33N	R23E
87	33N	R23E
88	33N	R23E
89	33N	R23E
90	33N	R23E
91	33N	R23E
92	33N	R23E
93	33N	R23E
94	33N	R23E
95	33N	R23E
96	33N	R23E
97	33N	R23E
98	33N	R23E
99	33N	R23E
100	33N	R23E

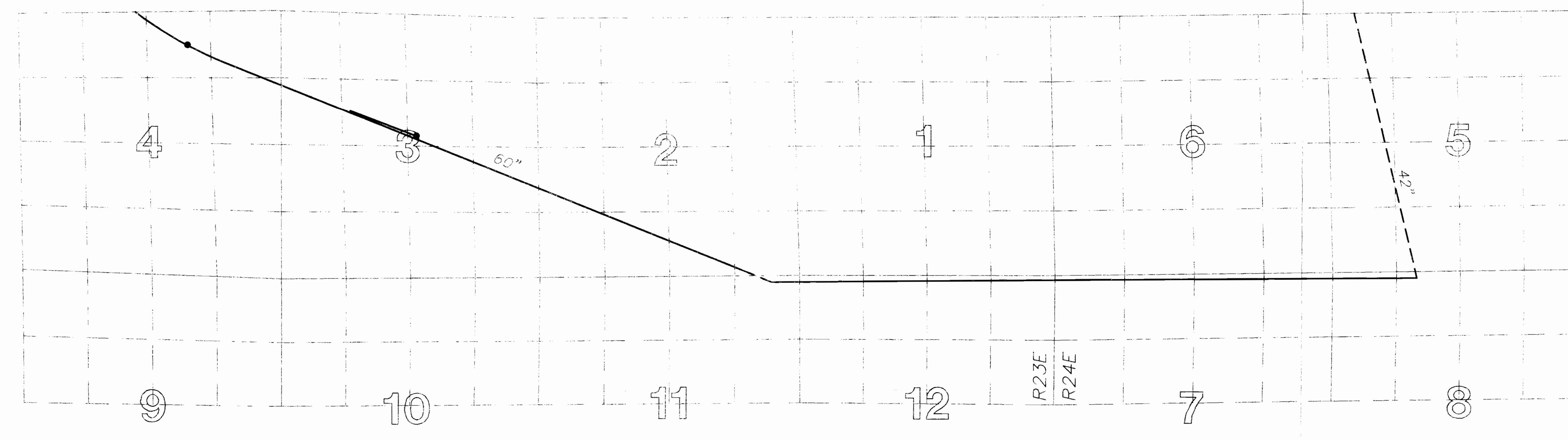
**LEGEND**

- PUMP STATION
  - PLACE OF USE DESCRIBED IN PERMIT 35426
  - ▭ IRRIGATED AREAS
  - COAL TAR LINED PIPE
  - STEEL PIPE
  - PVC PIPE
  - CEMENT MORTAR LINED PIPE
  - 8 SECTION NUMBER
  - 40 NUMBER OF ACRES IRRIGATED IN THE 1/4 1/4 SECTION
- ALL LOCATIONS ARE REFERENCED FROM THE WILLAMETTE MERIDIAN



9900 FEET OF PIPE BETWEEN THESE AREAS

10,500 FEET OF PIPE BETWEEN THESE AREAS



DR	M.F. MADISON
CHK	S.R. BAILEY
APPROV	D. COLLINS
	M.F. MADISON

**FINAL PROOF SURVEY**  
APPLICATION: 48683 PERMIT: 35426

THE PURPOSE OF THIS MAP IS TO IDENTIFY THE LOCATION OF THE WATER RIGHT. IT IS NOT INTENDED TO PROVIDE INFORMATION RELATIVE TO THE LOCATION OF PROPERTY OWNERSHIP BOUNDARY LINES.

**VERIFY SCALES**  
BAR IS ONE INCH ON ORIGINAL DRAWING  
IF NOT ONE INCH ON THIS SHEET, ADJUST SCALES ACCORDINGLY

BOEING AGR-INDUSTRIAL COMPANY PO BOX 139 BOARDMAN, OREGON	SHEET DWG NO DATE DEC 1993 PROJ NO PDX36494.A0
---	---